

FOR LEASE |  
**1008 MAIN STREET**



## GET IN TOUCH

**Maria Koreneva**  
City of Vancouver Property Negotiator  
T: 604.404.0285  
E: [maria.koreneva@vancouver.ca](mailto:maria.koreneva@vancouver.ca)

# FOR LEASE | 1008 MAIN STREET



## BUILDING FEATURES

- Year built: 2010
- Located at 1008 Main Street (Main and National Ave)
- Easily accessible by public transportation
- High visibility and great exposure
- 6 Reserved parking stalls – secured parkade.

## AVAILABLE SPACE

Unit                    2,414 SF

## RENTAL RATE

Gross rent \$35.00 PSF

Rent inclusive of realty taxes, common area maintenance and water.

Tenant responsible for hydro.

## ZONING

FC-1



# FOR LEASE | 1008 MAIN STREET

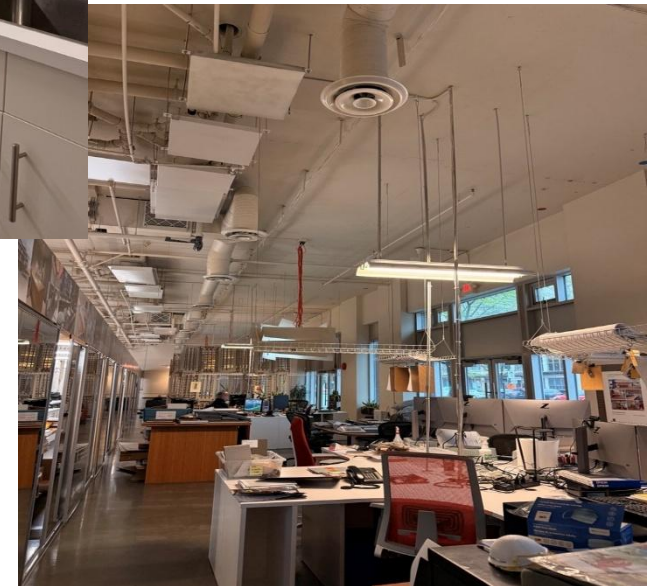


## LOCATION

Located just steps from Downtown and the Olympic Village SkyTrain Station, this commercial suite at 1008 Main Street offers outstanding accessibility with excellent public transit connections and a highly visible, central location.

The unit features 2,414 sq. ft. of bright, open-concept space, providing a highly versatile layout suitable for a wide range of office or retail uses. The generous floor area allows for flexible configurations, ideal for businesses seeking a spacious and functional environment. Additional features include six (6) secured parking stalls in a secure underground parkade, access to a dedicated bike room, and a convenient loading bay, offering ease for deliveries and operations.

With its prime urban location, excellent transit access, ample parking, bike facilities, loading access, and adaptable layout, this suite presents an attractive opportunity for a wide range of businesses looking to establish or expand in one of Vancouver's most dynamic neighborhoods.



E. & O. E. The information contained herein was obtained from sources deemed reliable, and while thought to be correct, it is not guaranteed by the City of Vancouver and is subject to change without notice. All information should be carefully verified. All measurements quoted herein are approximate.