

PRIME OFFICE SPACE FOR LEASE

Purdy's Landing Suite 201

Suite View



Purdy's Landing
1949 Upper Water St.
Halifax Canada B3J 3N3

TECHNICAL INFORMATION

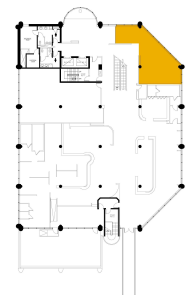
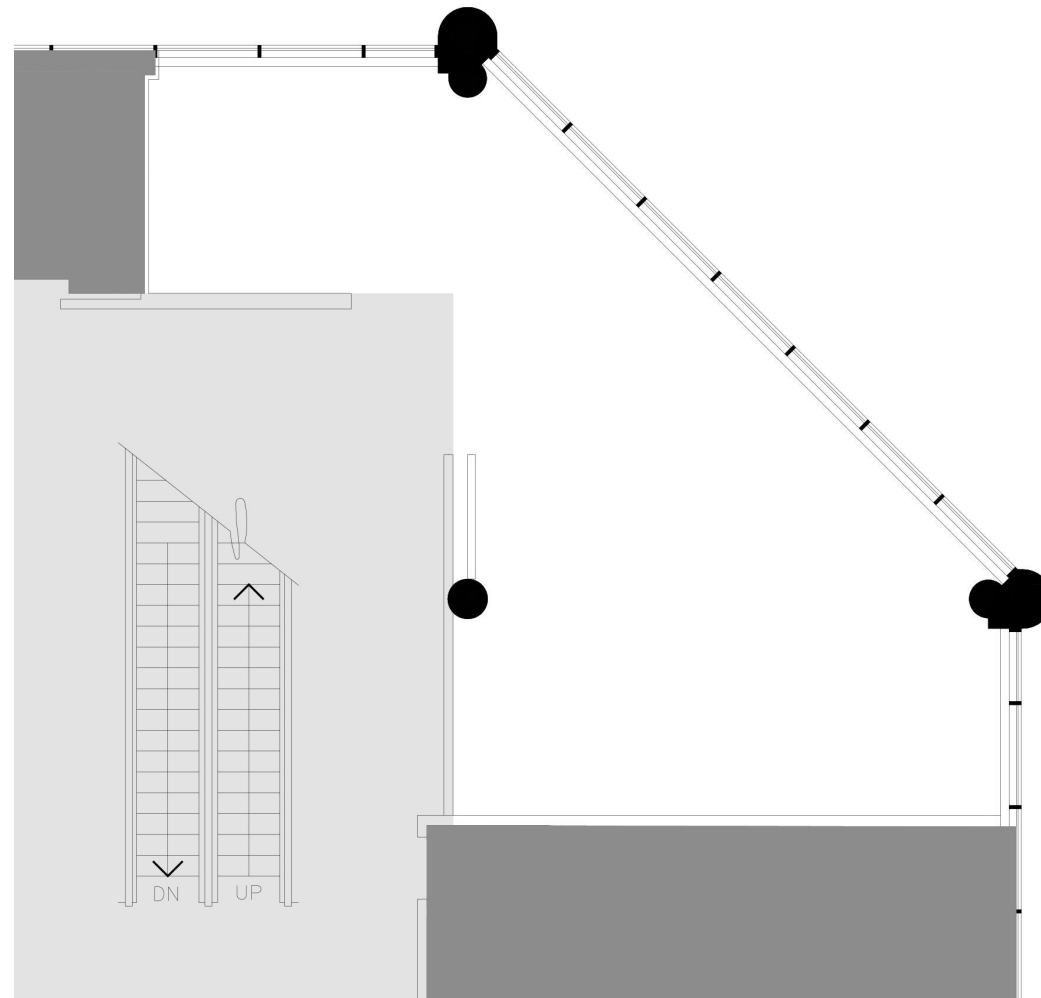
SUITE: 2nd floor, Suite 201
RENTABLE AREA: 940 sq.ft.

BUILDING DESCRIPTION

The Purdy's Landing building is a part of the Purdy's Wharf complex and is strategically connected to Purdy's Wharf Tower One and Two via a pedway system. This building features a retail area which services the towers and is finished in a striking colored glass and concrete exterior.

CONTACT INFORMATION

GWL Realty Advisors Inc.
(902) 421-1122
pwoneserve@gwra.com



KEY PLAN