

110 - 1228 HOMER STREET, VANCOUVER
836 SF RETAIL/OFFICE STRATA UNIT IN YALETOWN

**FOR
LEASE**



WILLIAM | WRIGHT

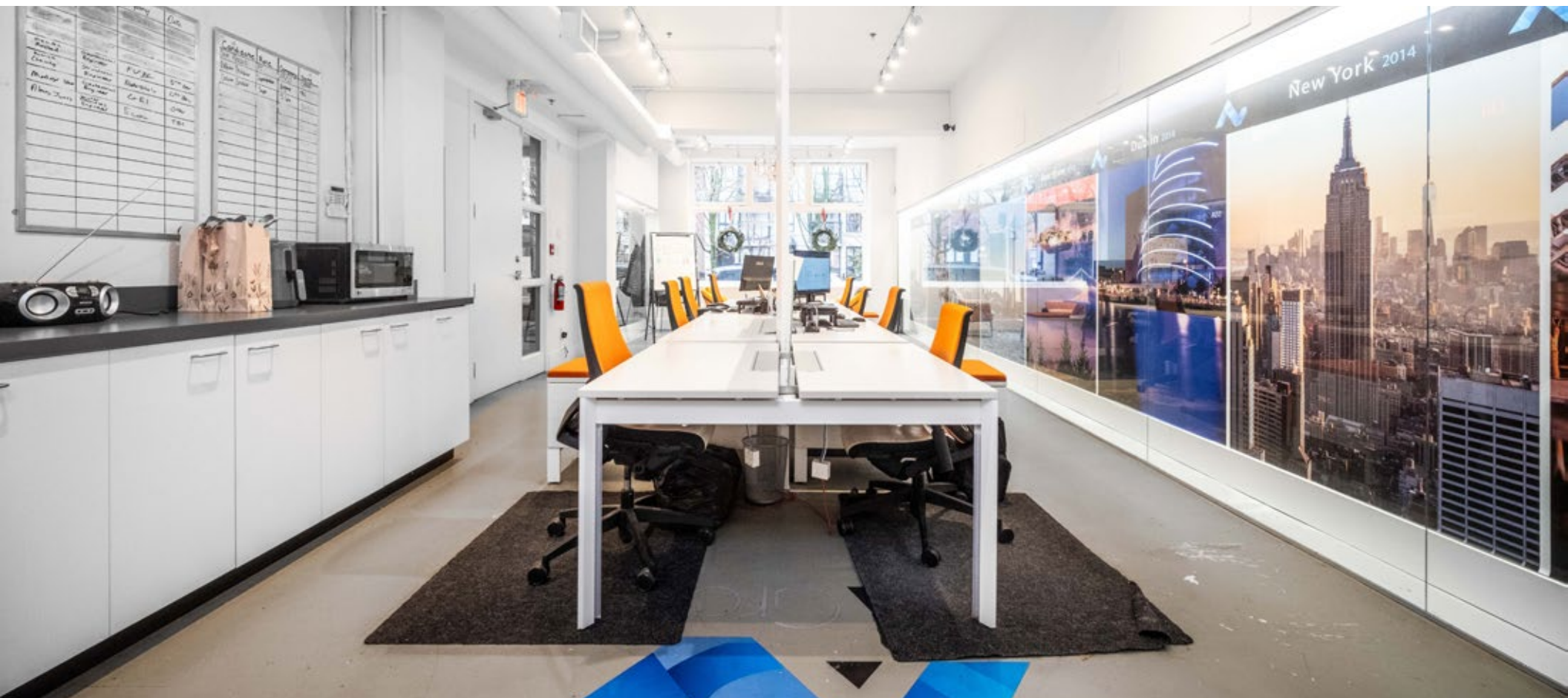
RODERICK MACKAY
roderick@williamwright.ca
604.428.5255

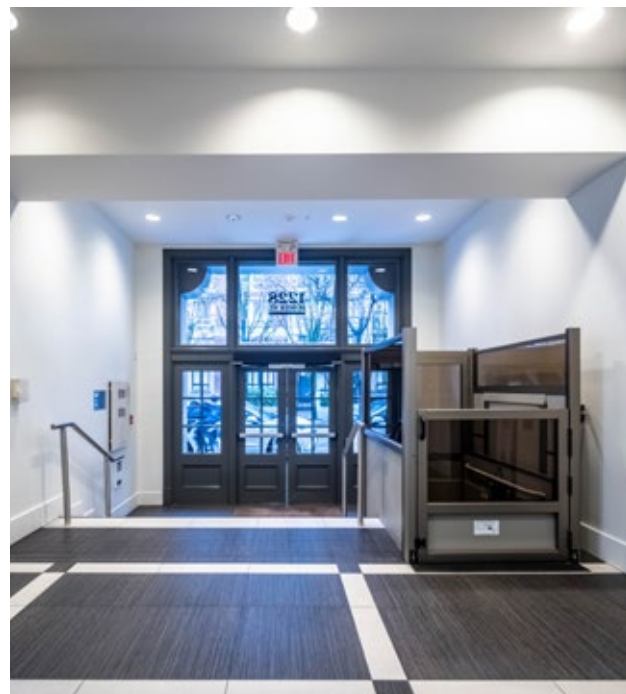
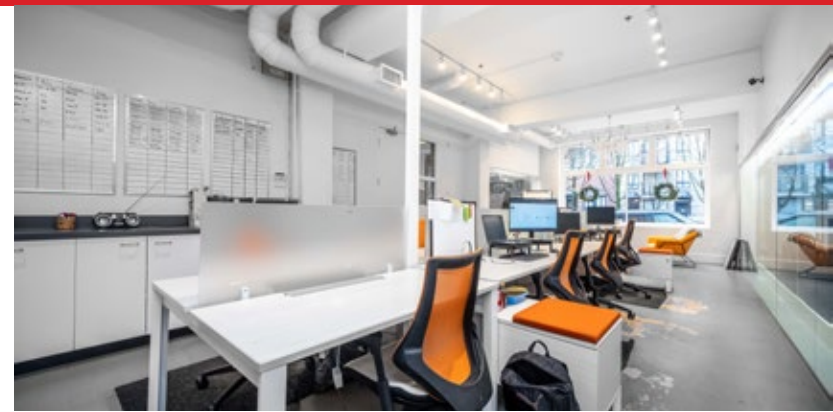
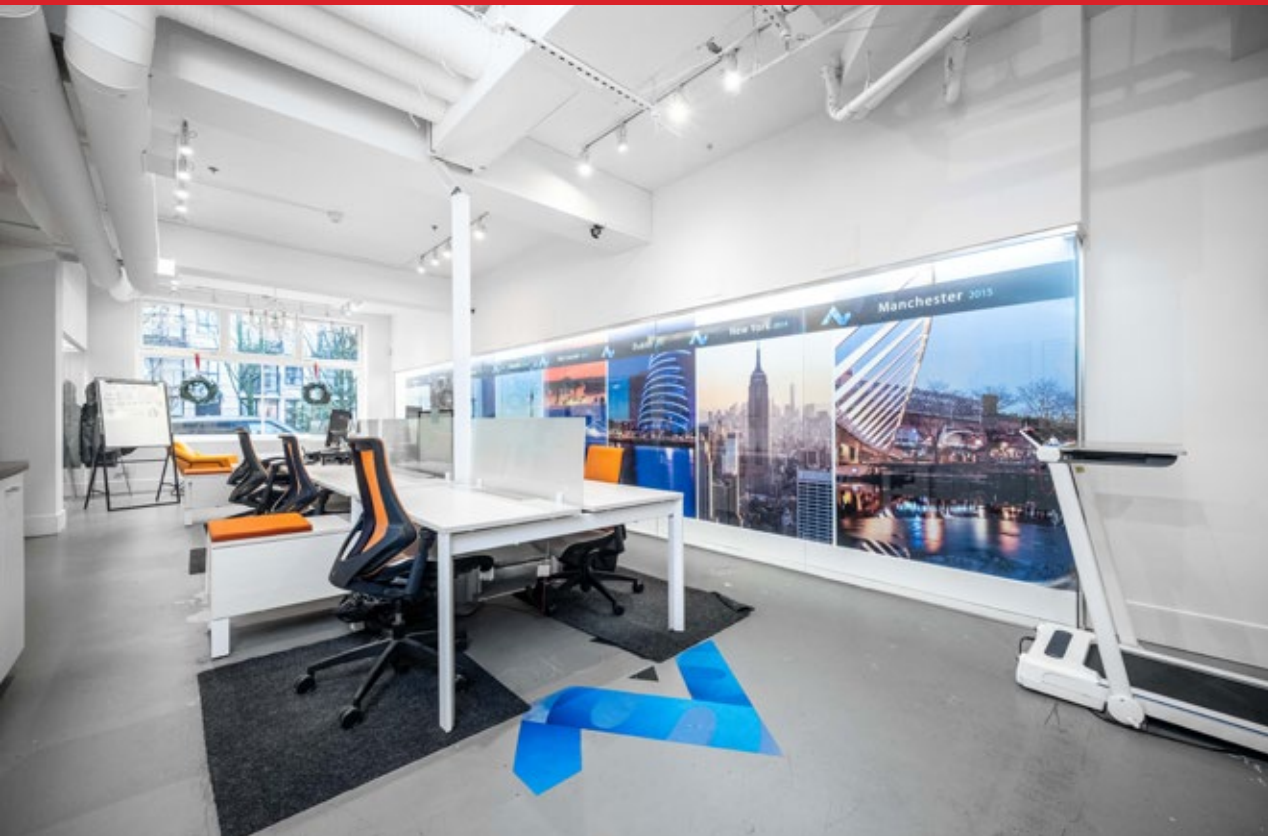


**836 SF retail/
office strata unit
in Yaletown**

Unit 110 is an 836 SF retail/office strata unit prominently located in the heart of Yaletown along Homer Street. The unit benefits from large street-front windows that provide excellent natural light and visibility, while maintaining convenient access through the building lobby.

The space features high ceilings, full HVAC, and a private in-suite washroom, offering a functional and comfortable layout for a wide range of business uses. Currently occupied by an office tenant, the unit is well suited for professional services, personal services, medical or wellness practitioners, boutique retail, or showroom-style users seeking a central Yaletown presence.





Salient Facts

Size	± 836 SF
Zoning	HA-3
Basic Rent	\$80.00/FT
Additional Rent	\$32.00/FT
Monthly Rent	\$7,802 + GST

Yaletown

Located in the heart of Yaletown, 1228 Homer Street benefits from excellent foot traffic, access to public transit, and proximity to False Creek, BC Place, and the downtown core. Surrounded by high-density residential and commercial developments, this location offers a dynamic urban environment suitable for a variety of office, retail or service uses.

SkyTrain:

Yaletown-Roundhouse Station in a 1 minute walking distance

Bus Stops

Nearby along Pacific Boulevard and Mainland Street

Easy Access

To Cambie Bridge, Downtown, and False Creek



DRIVING TIMES	100 TRANSIT SCORE
YALETOWN-ROUNDHOUSE SKYTRAIN --- 1 MIN	99 WALK SCORE
YVR AIRPORT ----- 20 MIN	88 BIKE SCORE
BURNABY - - - - - 30 MIN	
SURREY - - - - - 40 MIN	
COQUITLAM - - - - - 50 MIN	

**For More Information
Contact**

RODERICK MACKAY
roderick@williamwright.ca
604.428.5255