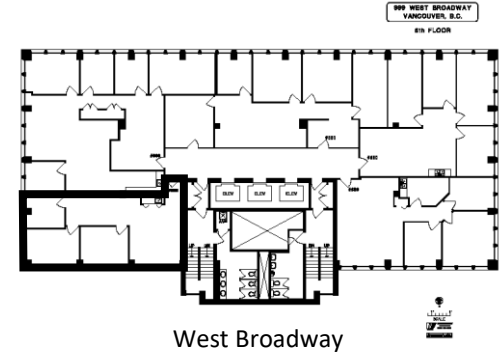
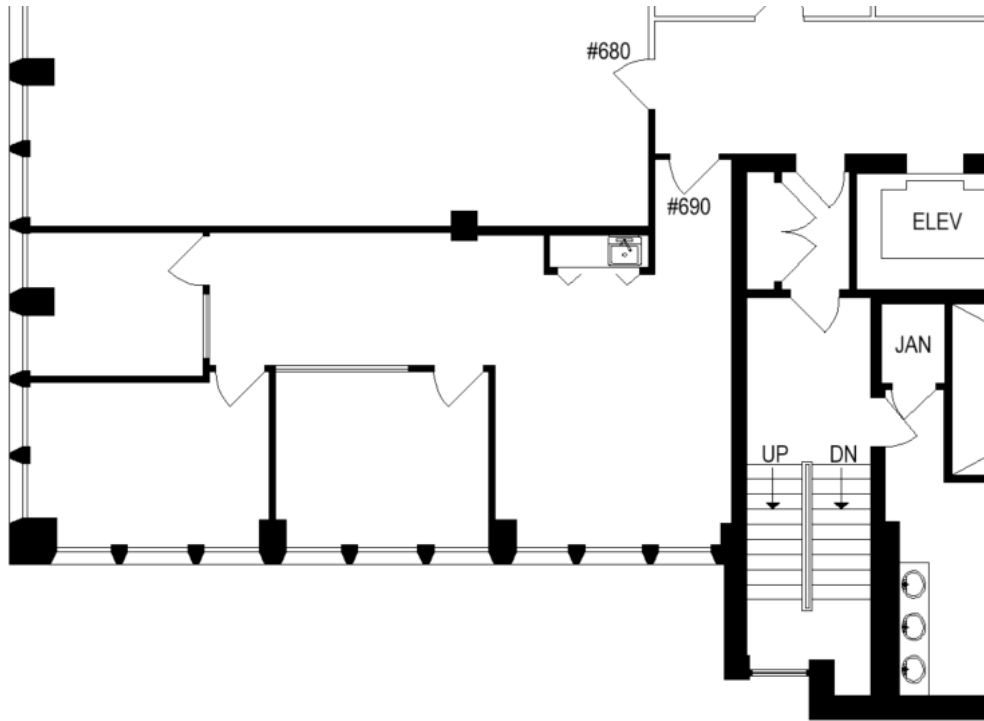


999 West Broadway, Vancouver, BC



Suite 690
1,027 square feet

Description:
Southwest facing unit improved with three offices, open space, and kitchenette.

This is a representation for marketing purposes only and should not be used for measurements of any kind. This drawing is not to scale.

TPMG CAPITAL

Real Estate Acquisition
Management
Leasing