



QU
BE

FOR LEASE
Decathlon
Paul & Joanne
613-725-1118

FOR SUBLEASE – **TURNKEY OFFICE**

141 LAURIER AVENUE WEST

OTTAWA, ONTARIO

141 LAURIER AVENUE WEST

AVAILABILITY DETAILS

Premises	Size (SF)	Rent (Per SF)	Additional Rent (est. 2025)	Availability	No of Offices
Suite 602	5,207	\$17.00	\$18.37	Please Contact	10

SPACE DETAILS

- Opportunity to occupy **turnkey office** unit in prominent downtown building- 141 Laurier.
- Fully built out office space with multiple offices, reception area, boardroom, fully equipped kitchen and printing room. Unit is directly accessible by elevator.
- Furniture can be made available upon request.
- **4 parking spaces** included in lease. On-site parking available at a rate of \$250 per month per spot.
- Term left on Lease- Please Contact.

BUILDING HIGHLIGHTS

- Steps from City Hall, Courthouse and Parliament Hill, in close proximity to a variety of amenities and public transit.
- Completely renovated lobby, elevator cabs, and modernized common areas.
- Brand new 24-person shared boardroom available to tenants free of charge.
- Complimentary **shower and fitness facilities** on-site. On-site café- Ministry of Coffee, with a breakfast and lunch offering, located directly off the lobby.

BENJAMIN SHERMAN
BROKER, PRINCIPAL
(613) 513 4759

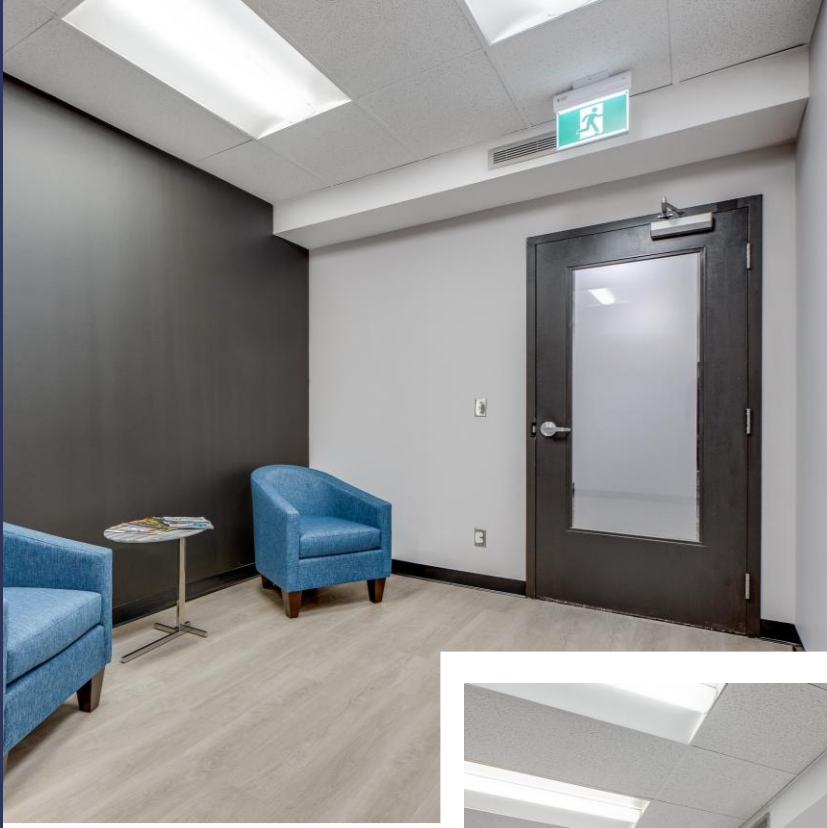
ben@qubeproperties.com

SAMIZ SUNESARA
SALES REPRESENTATIVE
(613) 413 2178

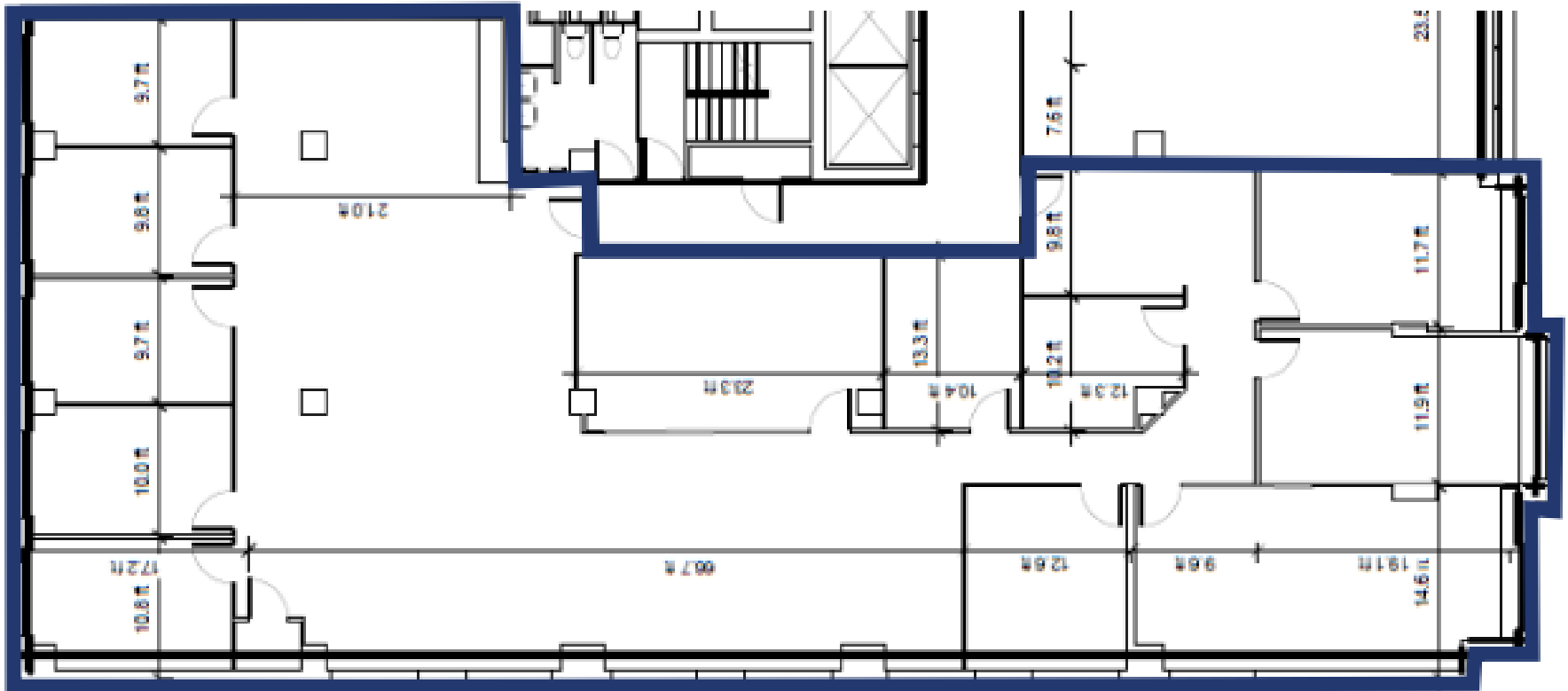
samiz@qubeproperties.com

QUBE PROPERTIES LTD.
REAL ESTATE BROKERAGE
255 MICHAEL COWPLAND
DRIVE OTTAWA ON K2M 0M5

QU
BE



FLOOR PLAN



BENJAMIN SHERMAN
BROKER, PRINCIPAL
(613) 513 4759
ben@qubeproperties.com

SAMIZ SUNESARA
SALES REPRESENTATIVE
(613) 413 2178
samiz@qubeproperties.com

QUBE PROPERTIES LTD.
REAL ESTATE BROKERAGE
255 MICHAEL COWPLAND
DRIVE OTTAWA ON K2M 0M5

**QU
BE**





QUBE

BENJAMIN SHERMAN
BROKER, PRINCIPAL
(613) 513 4759
ben@qubeproperties.com

SAMIZ SUNESARA
SALES REPRESENTATIVE
(613) 413 2178
samiz@qubeproperties.com

QUBE PROPERTIES

QUBE PROPERTIES LTD.

REAL ESTATE BROKERAGE
255 MICHAEL COWPLAND DRIVE
OTTAWA ON K2M 0M5

This disclaimer shall apply to Qube Properties Ltd, Real Estate Brokerage, and to all other divisions of the Corporation, to include all employees and independent contractors ("Qube"). The information set out herein, including, without limitation, any projections, images, opinions, assumptions and estimates obtained from third parties (the "Information") has not been verified by Qube, and Qube does not represent, warrant or guarantee the accuracy, correctness and completeness of the Information. Qube does not accept or assume any responsibility or liability, direct or consequential, for the Information or the recipient's reliance upon the Information. The recipient of the Information should take such steps as the recipient may deem necessary to verify the Information prior to placing any reliance upon the Information.