



# Currents Professional Centre

## Now Pre-leasing

- Convenient access, located immediately off of the Anthony Henday
- Located in direct proximity to the new, growing, and affluent southwest area
- Up to 36,000 sf build-to-suit office within existing Currents of Windermere
- Reputable, market leading developers
- Ample parking
- 2,000 - 12,000 sf available per floor

## Get more information

**Karnie Vertz**  
Principal  
D 780 429 7551  
[karnie.vertz@avisonyoung.com](mailto:karnie.vertz@avisonyoung.com)

**Peter Schwann**  
Principal  
D 780 429 7563  
[peter.schwann@avisonyoung.com](mailto:peter.schwann@avisonyoung.com)

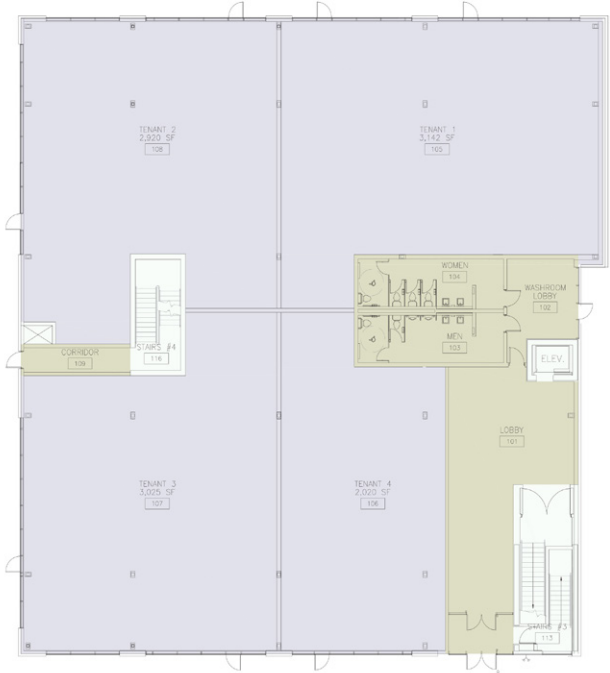
[avisonyoung.com](http://avisonyoung.com)

# Pre-Leasing

Currents of Windermere, Edmonton, AB

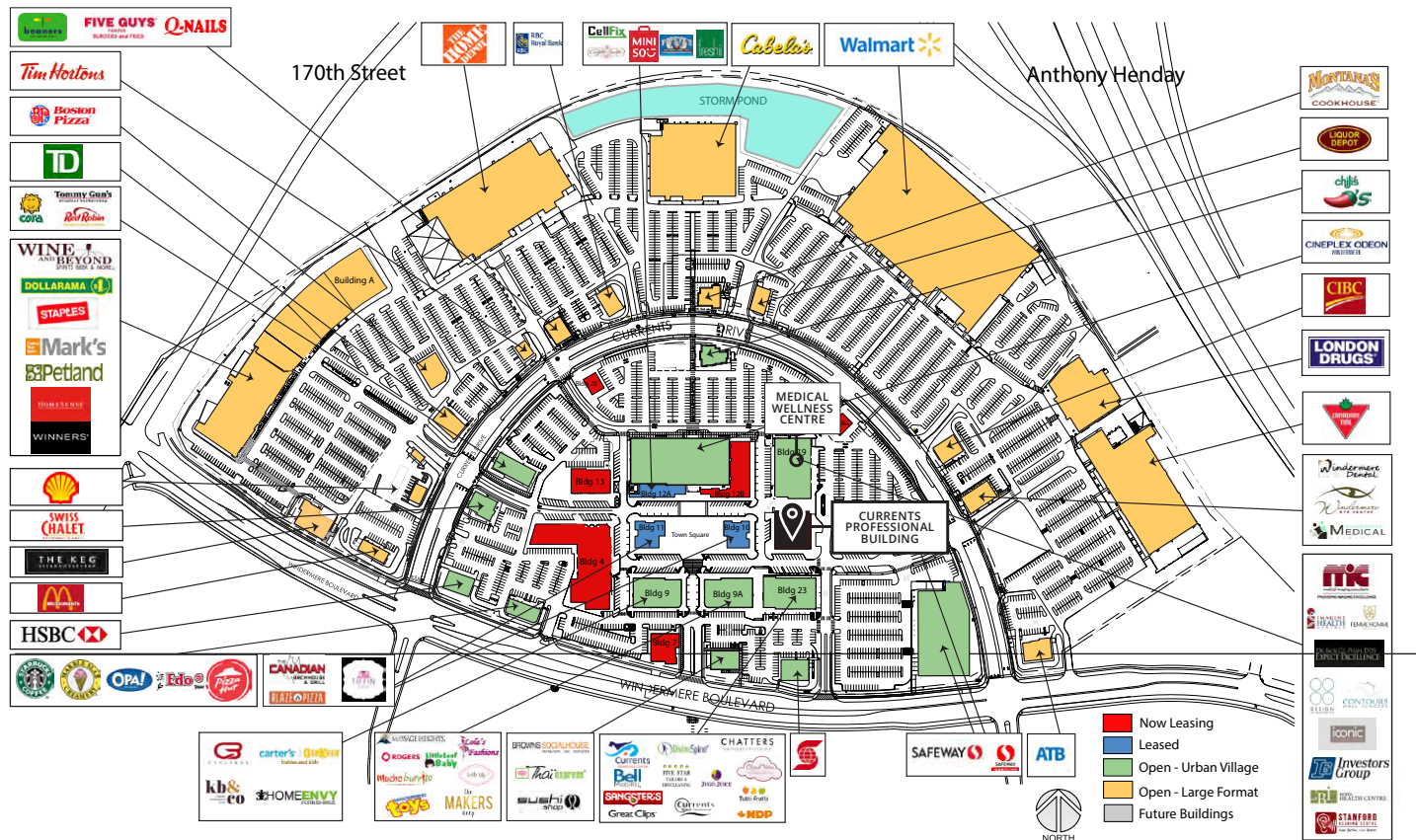
## Offering Summary

Area:	Main 12,000 sf
	2nd 12,000 sf
	3rd 12,000 sf
	Total 36,000 sf
Basic Rent:	Negotiable financial package
Additional Rent:	\$15.00 psf
Parking:	3/1,000 sf above ground
	1/1,200 sf below ground
	\$150 below ground



## Windermere Area

Currents of Windermere is a large scale retail power and lifestyle centre, including a pedestrian friendly urban villiage and several bix box retailers. Situated in Southwest Edmonton which has 60% of all of the household growth in The Capital City. Currents Professional Centre is the ideal place for your office.



**Karnie Vertz**  
Principal  
780 429 7551  
karnie.vertz@avisonyoung.com

**Peter Schwann**  
Principal  
D 780 429 7563  
peter.schwann@avisonyoung.com

**AVISON  
YOUNG**