

FOR SALE

\$625,000

Prime Retail & Office Unit

HighExposure | Jasper Avenue | WestDowntown | High Density

RE/MAX
REAL ESTATE
COMMERCIAL

THE PEARL

11953 Jasper Ave NW,
Edmonton, AB

This 1,001 sq. ft. unit offers outstanding exposure along Jasper Avenue, delivering prime street-front visibility in a highly travelled and rapidly growing urban area. With strong surrounding demographics and immediate access to major downtown amenities, the location provides a strategic advantage for a wide range of professional and retail users.

UNIT FOR SALE

UNIT FOR SALE

CLEMENTINE BAR

KAYU AESTHETICS

Cal Halasz

CommercialSales/ Leasing
780-554-0979
calhalasz@outlook.com

Gurprit Gill

Commercial Sales/ Leasing
587-501-9936
ggillyeg@gmail.com

RE/MAX COMMERCIAL

Suite200, 10835124 St NW
Edmonton, AB T5M 0H4

Property Details

11953 Jasper Ave NW,
Edmonton, AB

Legal Description:

CONDOMINIUM PLAN: 1520090

UNIT: 4

Unit Size: 1,001 Square Feet

Building Year: 2011

Zoning: DC2

Parking: 1 Titled Stalls

Purchase Price: \$625,000

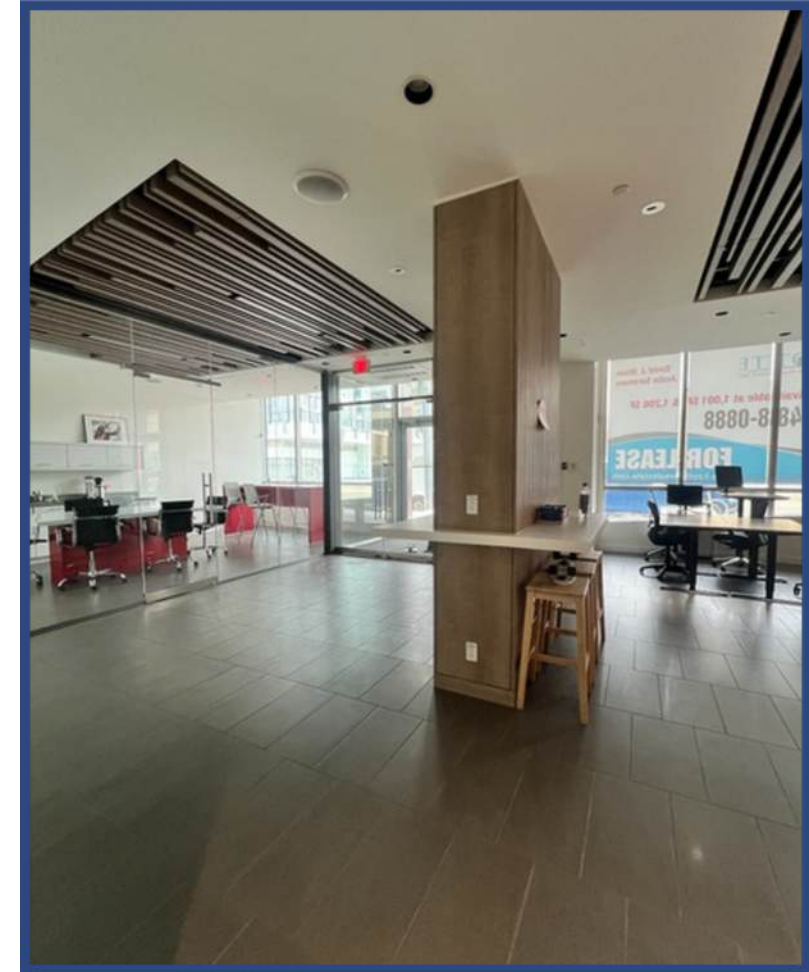
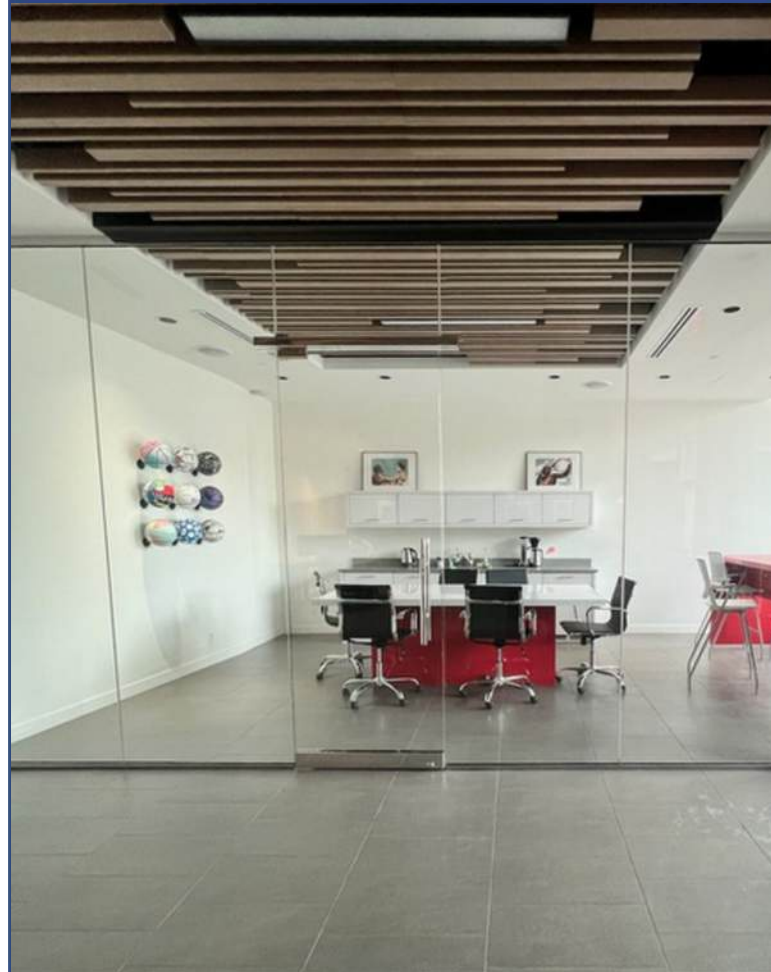
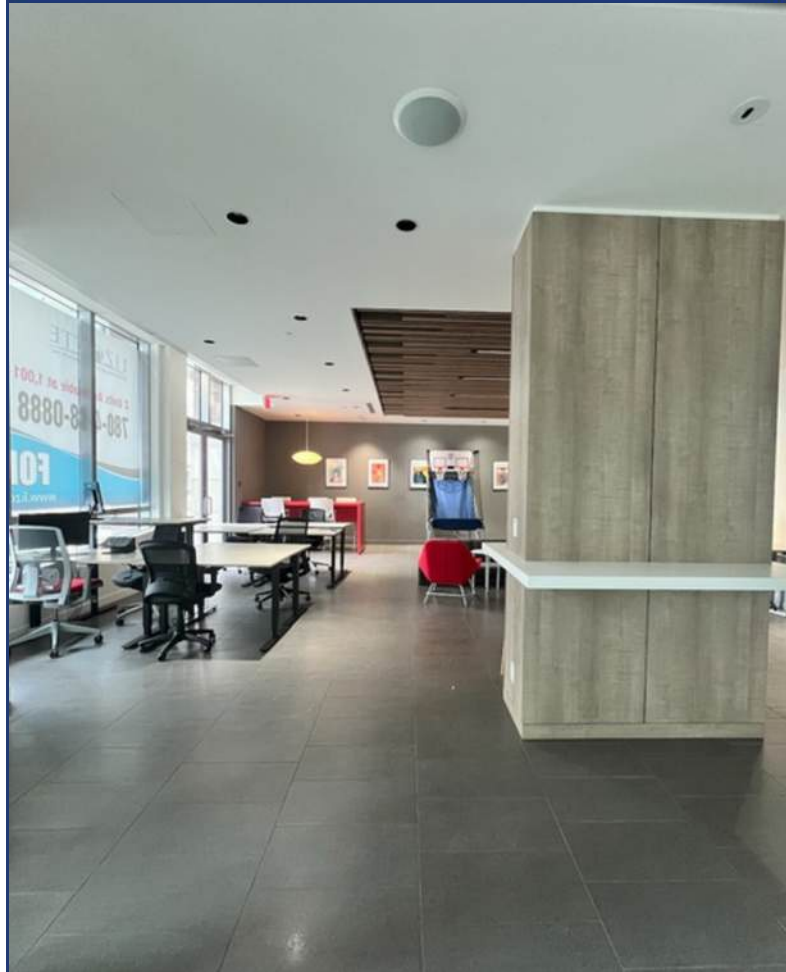
Condo Fees: \$1,026.00 per Month

PropertyTax: Unit 4: \$12,807.54 (2025)

- Prime Jasper Avenue street-front exposure with exceptional visibility
- Situated beneath and surrounded by high-density residential towers, providing a strong built-in customer base
- 1,001 sq. ft. of versatile commercial space suitable for professional, medical, retail, or service-based uses
- Continuous pedestrian and vehicle traffic along one of Edmonton's busiest urban corridors
- Highly walkable and transit-accessible location with immediate access to downtown and Oliver
- Surrounded by notable amenities, cafés, restaurants, and lifestyle services

Interior Photos

11953 Jasper Ave NW,
Edmonton, AB



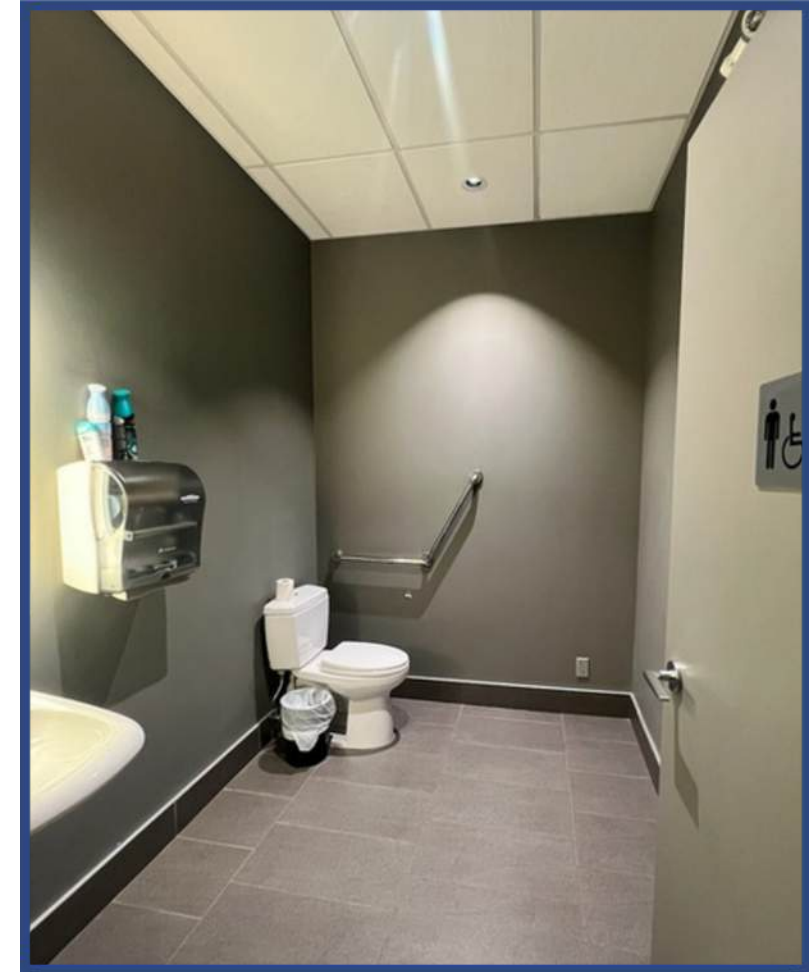
Cal Halasz
780-554-0979
CommercialSales/ Leasing calhalasz@outlook.com



Gurprit Gill
587-501-9936
Commercial Sales/ Leasing ggillyeg@gmail.com

Interior Photos

11953 Jasper Ave NW,
Edmonton, AB



Cal Halasz
CommercialSales/ Leasing
780-554-0979
calhalasz@outlook.com



Gurprit Gill
Commercial Sales/ Leasing
587-501-9936
ggillyeg@gmail.com

Location

11953 Jasper Ave NW,
Edmonton, AB



JASPER AVENUE

Jasper Avenue is Edmonton's most prominent downtown thoroughfare, connecting the financial core with the government district and cultural attractions. The property benefits from heavy pedestrian volumes, excellent transit access (including nearby LRT stations), and proximity to multiple residential and commercial developments.

The information contained herein has been obtained from various sources considered reliable. RE/ MAX Real Estate Edmonton Ltd. does not make any representations or warranty, expressed or implied, as to the accuracy or completeness of the information or statements contained herein.

Cal Halasz
CommercialSales/ Leasing. calhalasz@outlook.com
780-554-0979



Gurprit Gill
Commercial Sales/ Leasing ggillyeg@gmail.com
587-501-9936