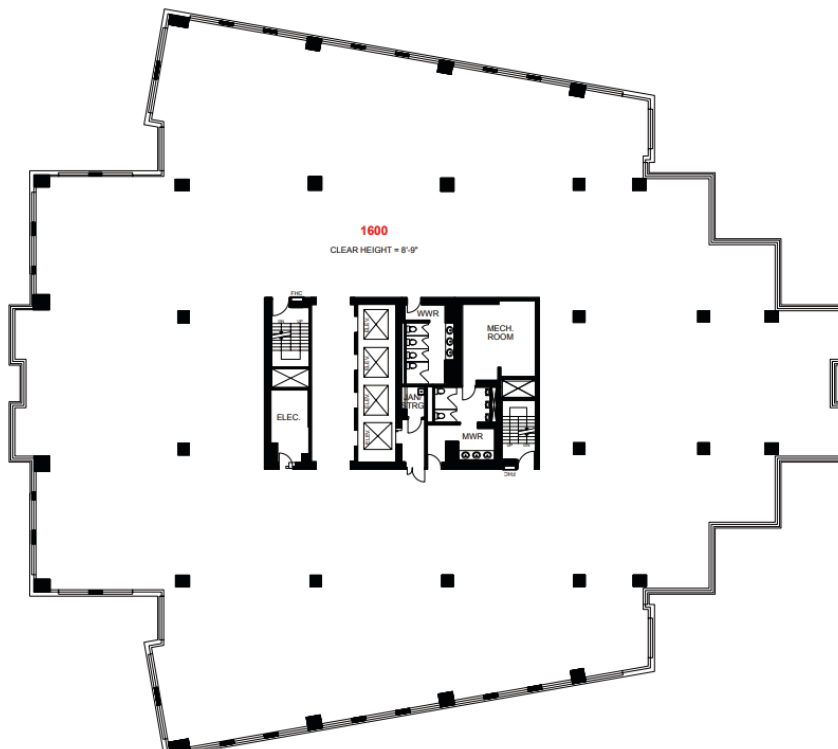


Updated: 2026

# Suite Features

45 O'Connor Street  
—  
World Exchange Plaza



**Suite  
1600**

**Rentable Area  
22,225 SF**

**Availability:** Immediately

**Key features:**

- Full floor opportunity with views of parliament
- Customize corridor
- Contiguous with full 15th floor up to (44,450 SF)

**Additional Rent:**

- \$29.36 PSF

**Stephanie Thompson**  
Director, Leasing  
Sales Representative  
QuadReal Property Group, Brokerage

T 613 690 7394  
E [Stephanie.Thompson@quadreal.com](mailto:Stephanie.Thompson@quadreal.com)  
W [www.quadreal.com](http://www.quadreal.com)



Updated: 2026

# Suite Gallery

45 O'Connor Street

—

**Suite**  
1600

