

10  
90

# HOMER STREET SUITE 200

## Unit Highlights



**AREA**  
11,479 SF



**OCCUPANCY**  
Immediately



**RATE**  
Neogtable



**ADDITIONAL RENT**  
\$19.42\* (2024 est.)

- Large open work spaces
- Large kitchen and staff lounge
- 4 offices
- 2 large boardrooms
- 4 meeting rooms
- Exposed Ceilings

## Building Highlights



Secure Bike Storage

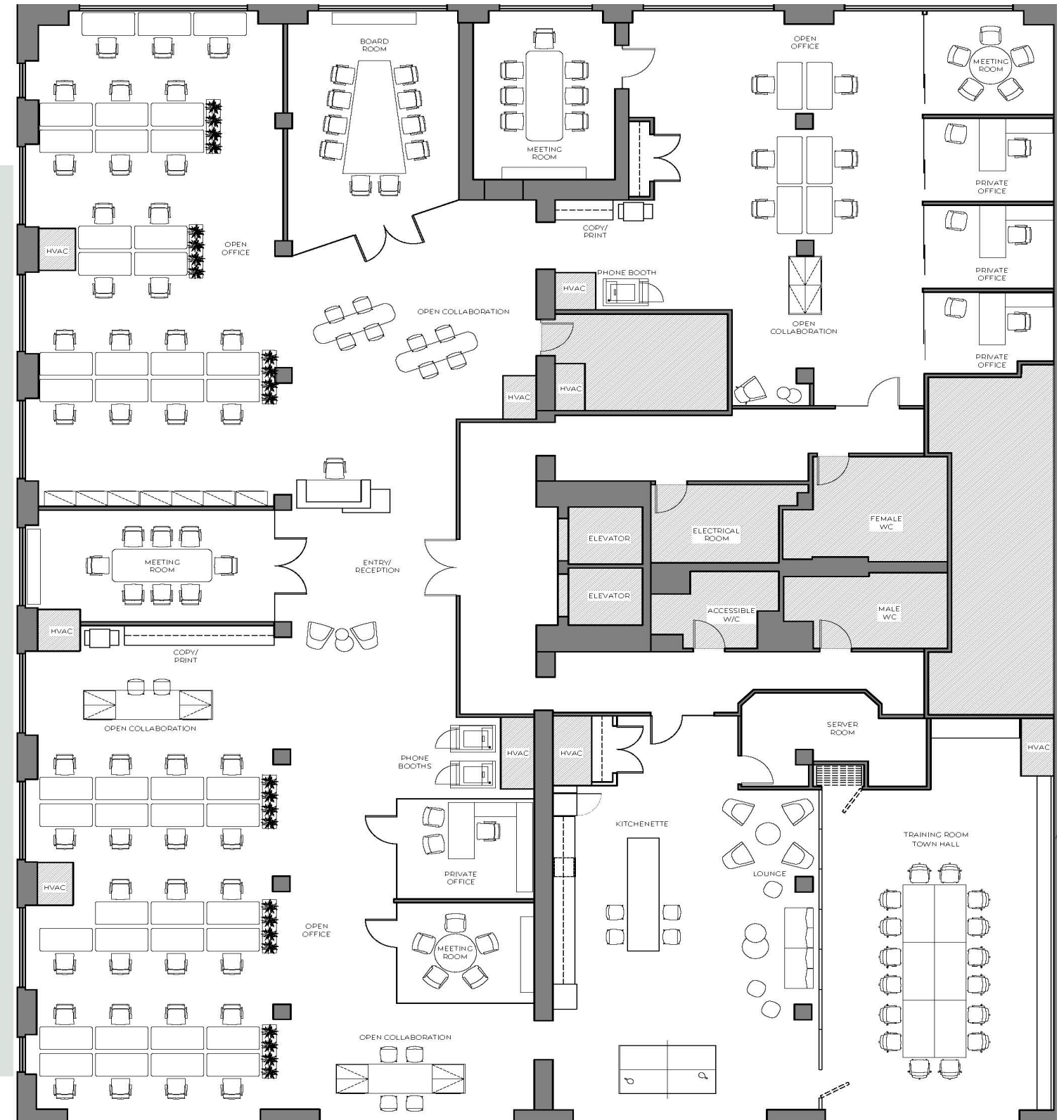


Central location



End of Trip Facilities

\*Excludes utilities, janitorial and management fee



Patty Willetts  
604-648-3095  
patty.willetts@gwlra.com

Peter Jenkins  
604-713-8920  
peter.jenkins@gwlra.com

10  
90

# HOMER STREET SUITE 200/290/220

## Unit Highlights

### Unit 200

- 3 offices
- 6,342 +/-
- 2 boardrooms
- Open work space

### Unit 290

- 3 offices
- 2,660 +/-
- 1 boardroom
- Large open work space
- 1 meeting room

### Unit 220

- 1 office
- 2,477 +/-
- 1 boardroom
- Large open work space
- 1 meeting room

