

For Lease

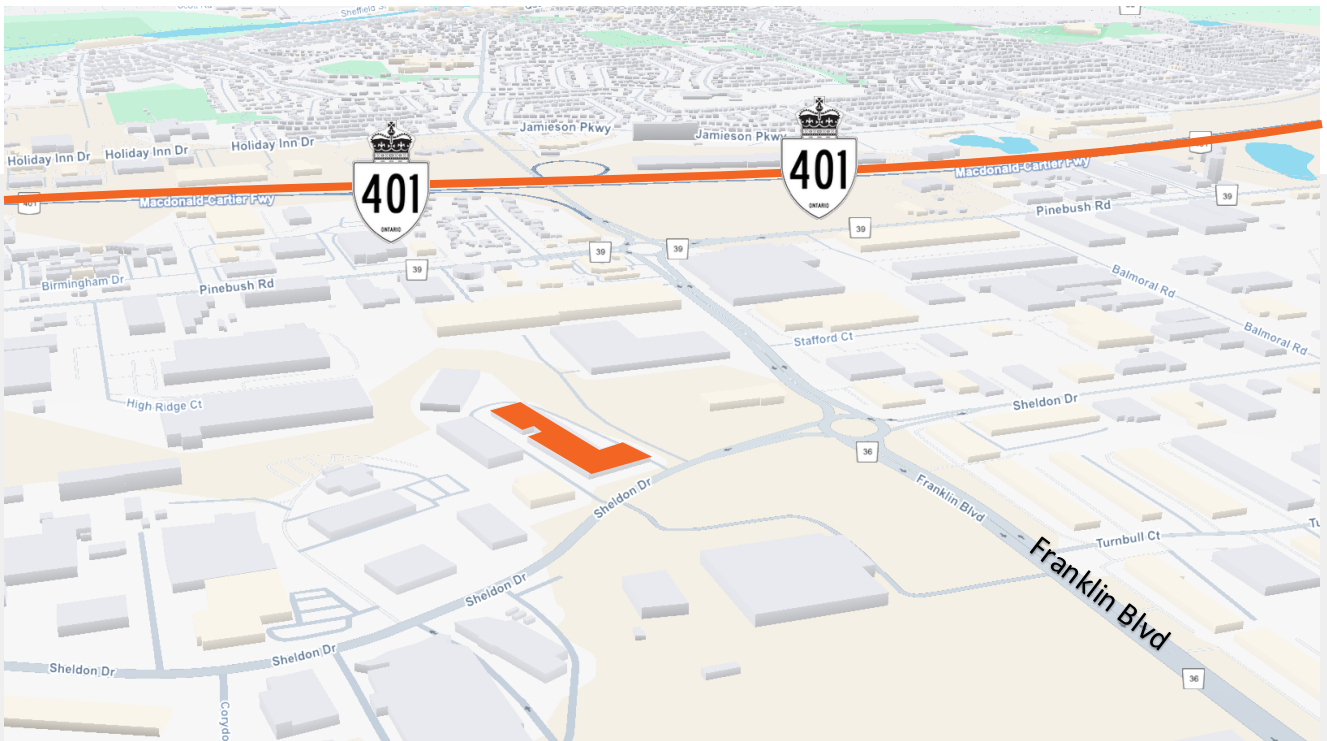


180 Sheldon Dr, Unit 1B-5

Cambridge, ON

Situated in Cambridge's established industrial node, 180 Sheldon Drive offers a functional and efficient space well-suited for a range of warehousing and light-industrial users.

- Available Immediately
- 20,835 SF
- 14' clear height
- 3 truck-level doors
- 1 Drive-in door

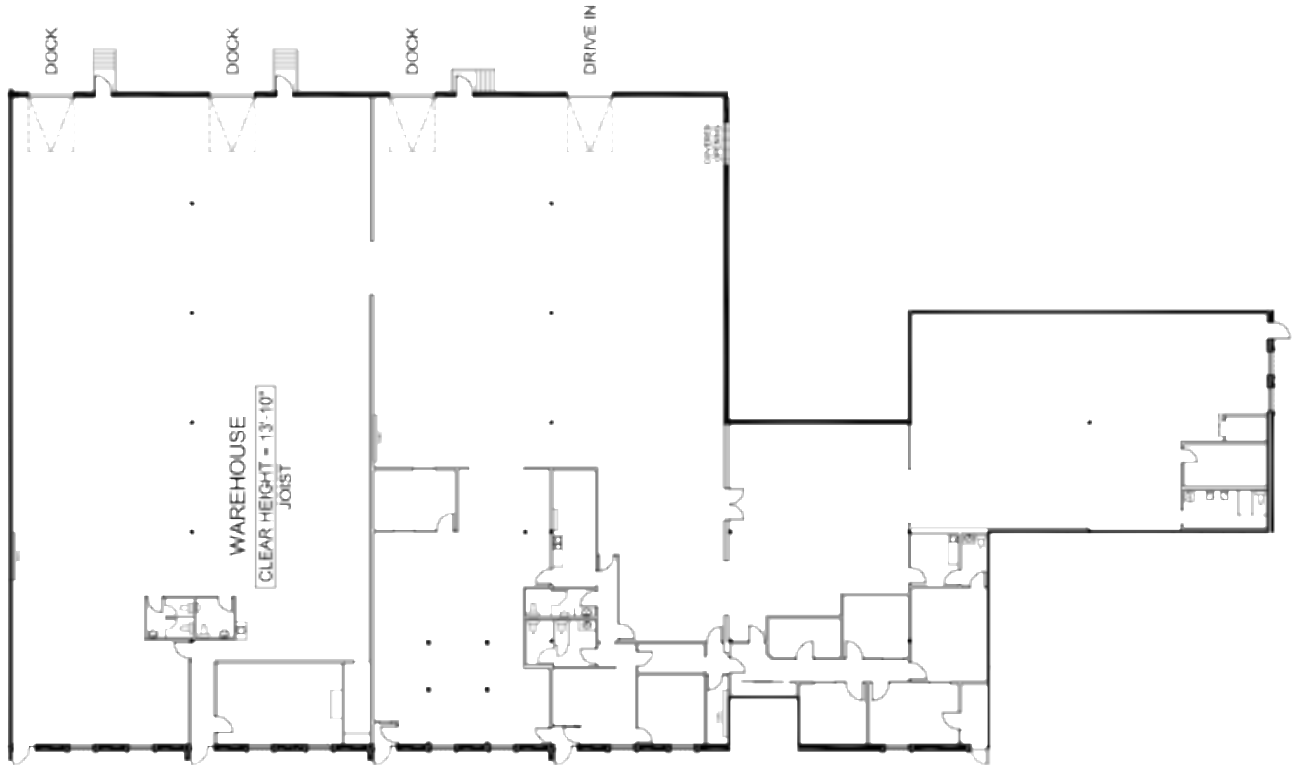


For leasing opportunities

Dennis Allcock, Senior Manager, Leasing
437.243.6339 | dallcock@dream.ca

Dream Industrial REIT
leasing.dream.ca

Floor Plan



Available Size:	Rates:	Total Additional Rent:	Availability:
20,835 SF	\$14.95 PSF	\$5.25 PSF	Immediate
Clear Height:	Loading Doors:	Zoning:	Power:
14'	3 TL 1 DI	M-3	200 A