



675 West Hastings

UNIQUE HERITAGE BUILDING // FOR LEASE

Property Overview



// End-of-trip facilities and an abundance of lockers



// Secure, spacious, and well-ventilated bike storage room



// 900 square foot outdoor patio available to all tenants



// Exceptional transit access



// Surrounded by downtown Vancouver's best restaurants and cafés



// Professionally managed by Uptown Property Group



Property Overview

Beautifully restored heritage building features efficient floor plans, large open spaces with windows on 4 sides, high ceilings (10 feet), operable windows, and great views to North and West. All building systems are brand new (lighting, air conditioning, washrooms, spinklers, security, CCTV). Modern interiors inside the structure of this solid heritage building. Located at the hub of transit with an abundance of amenities nearby.

Year built	1929
Floors	16
Size	+/- 109,655 SF
Ceiling Height	10'
Additional Rent	\$24.68 PSFPA (2024)



Unit 210

Open layout featuring reception area, two meeting rooms, a boardroom, three private offices, a kitchen, and a server room. Can be combined with Unit 200 for a total of 6,990 SF. Unit provides immediate access to newly upgraded common amenities, including an outdoor patio.

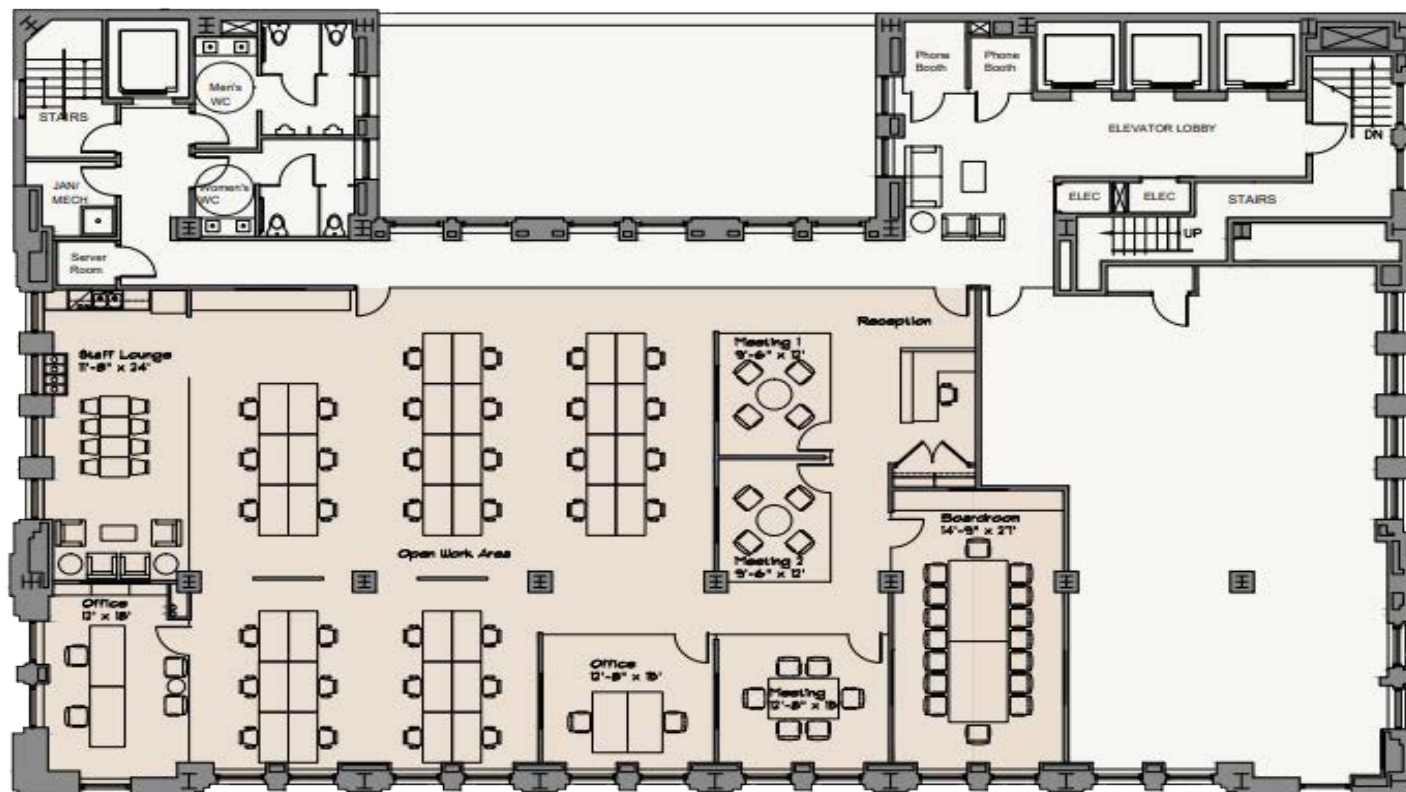
Area	Unit 200 - 1,897 SF Unit 210 - 5,093 SF
Base Rent	Contact agent
Availability	Immediately



[VIRTUAL TOUR](#)



[CONCEPTUAL FLOORPLAN](#)



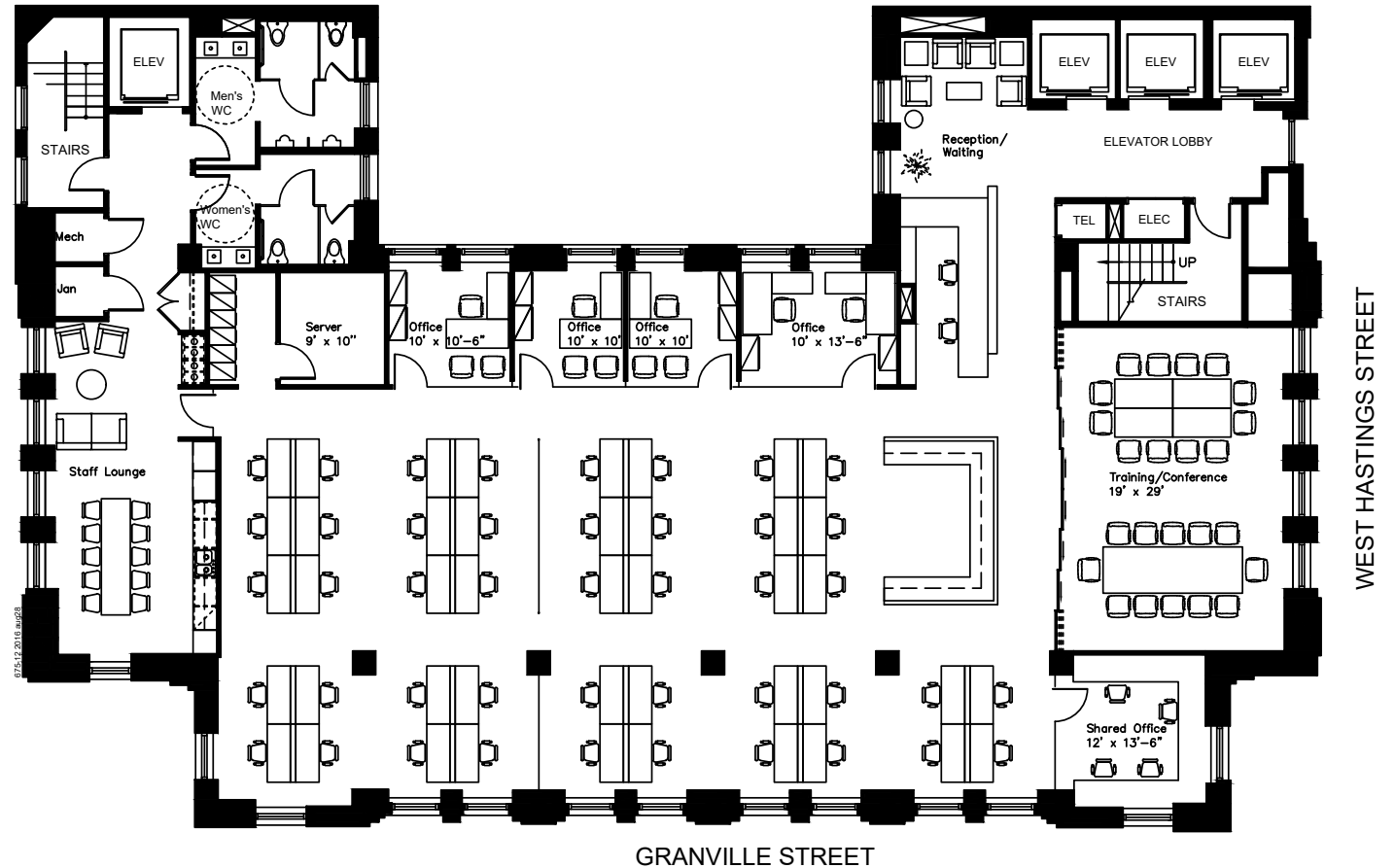
Unit 1200

Full floor opportunity, beautifully improved with mostly open area, perimeter offices, reception, kitchen and lounge area, large conference room and server room.

Unit	1200
Size	5,473 SF
Base Rent	Contact agent
Availability	Immediately



VIRTUAL TOUR



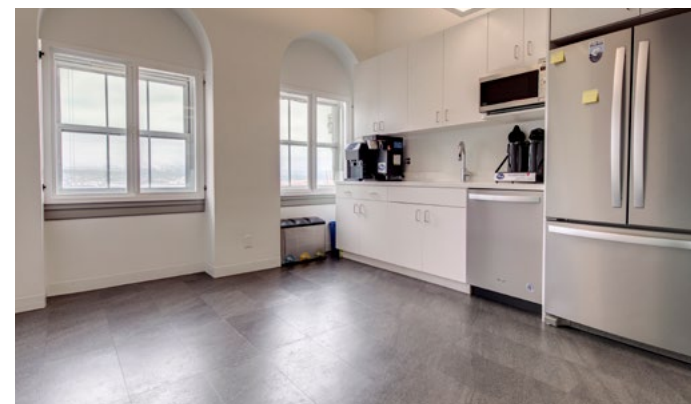
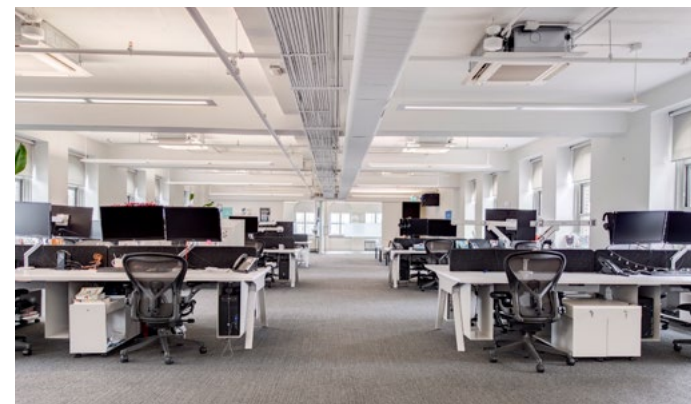
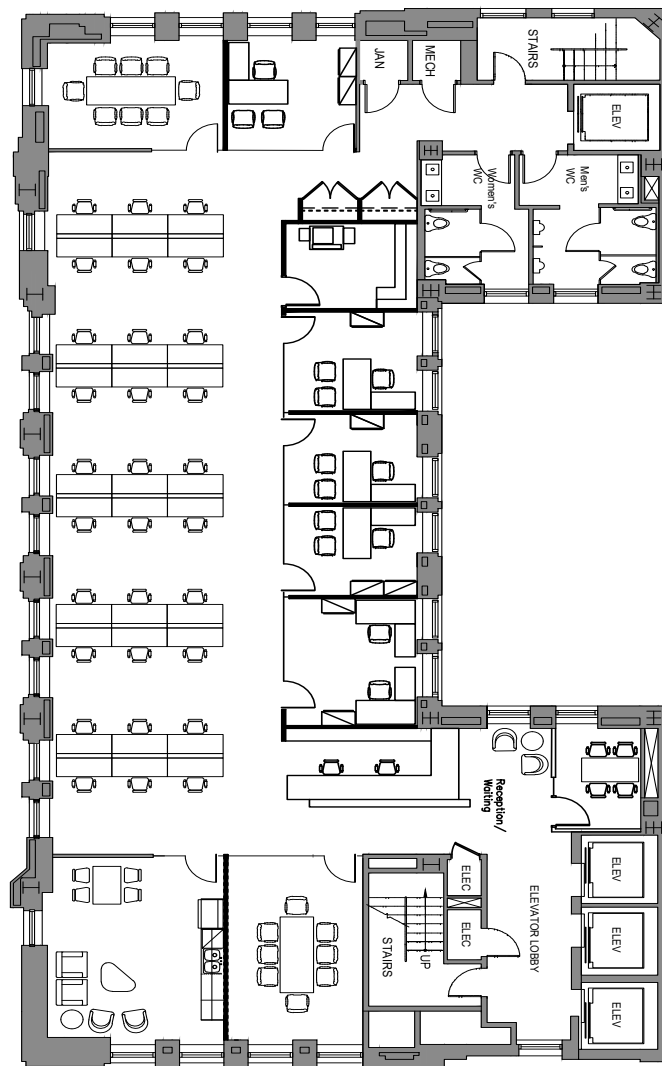
Unit 1600

Located on the entire 16th floor, the turn-key space is mostly open area featuring three meeting rooms and boardrooms, reception area and kitchen. This space can easily be modified to add more offices and an expanded staff lounge (see conceptual floorplan).

Unit	1600
Size	4,441 SF
Base Rent	Contact agent
Availability	Immediately

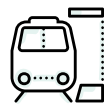
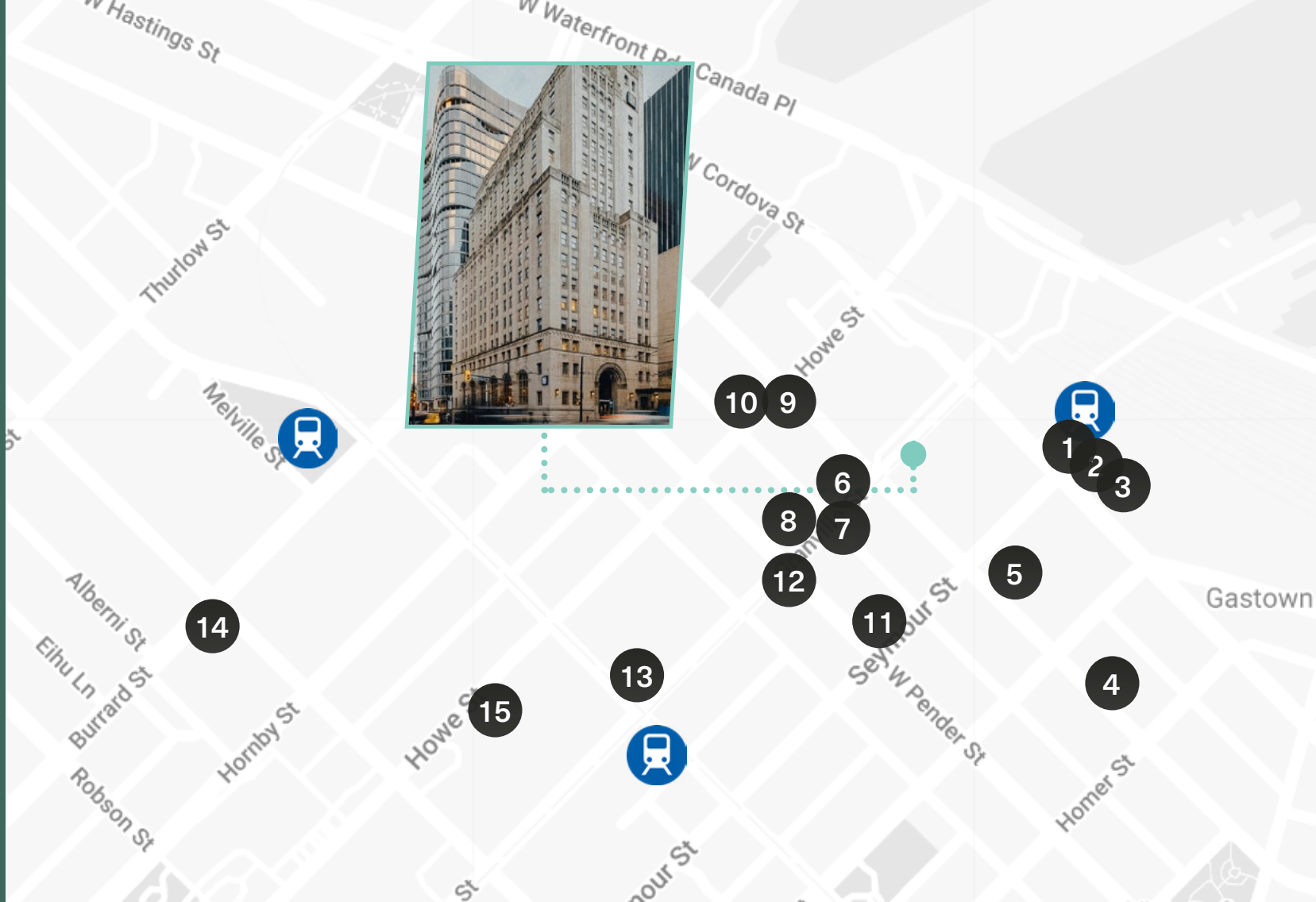


CONCEPTUAL FLOORPLAN



Location

1. Starbucks
2. Rogue Kitchen & Wetbar
3. Steamworks Brewpub
4. Lagree West
5. Top of Vancouver Revolving Restaurant
6. Raitown Cafe
7. Trees Organic Coffee
8. Rexall
9. Breka Bakery & Café
10. Hydra Estiatorio
11. Diamond Parking
12. Parking Vancouver
13. Holt Renfrew
14. Fairmont Hotel Vancouver
15. Pacific Centre



TRANSIT SCORE

100



WALK SCORE

96



BIKE SCORE

75

For more information, please contact:



Jocelyne Legal

Personal Real Estate Corporation

EXECUTIVE VICE PRESIDENT

+1 604 931 5021

jlegal@floorspace.ca

FLOORSPACE

745 Thurlow St., Suite 700

Vancouver, BC Canada

V6E 0C5

www.floorspace.ca



THIS DOCUMENT HAS BEEN PREPARED BY FLOORSPACE COMMERCIAL INC. FOR ADVERTISING AND GENERAL INFORMATION ONLY. ALL INFORMATION CONTAINED HEREIN IS FROM SOURCES WE DEEM RELIABLE, AND WE HAVE NO REASON TO DOUBT ITS ACCURACY; HOWEVER, NO GUARANTEE OR RESPONSIBILITY IS ASSUMED THEREOF, AND IT SHALL NOT FORM ANY PART OF FUTURE CONTRACTS. PROPERTY INFORMATION IS SUBMITTED SUBJECT TO ERRORS AND OMISSIONS AND ALL INFORMATION SHOULD BE CAREFULLY VERIFIED. ANY INTERESTED PARTY SHOULD UNDERTAKE THEIR OWN INQUIRIES AS TO THE ACCURACY OF THE INFORMATION. ALL MEASUREMENTS QUOTED HEREIN ARE APPROXIMATE. THIS PUBLICATION IS THE COPYRIGHTED PROPERTY OF FLOORSPACE COMMERCIAL INC. AND/OR ITS LICENSOR(S). COPYRIGHT © 2024 FLOORSPACE COMMERCIAL INC.

