

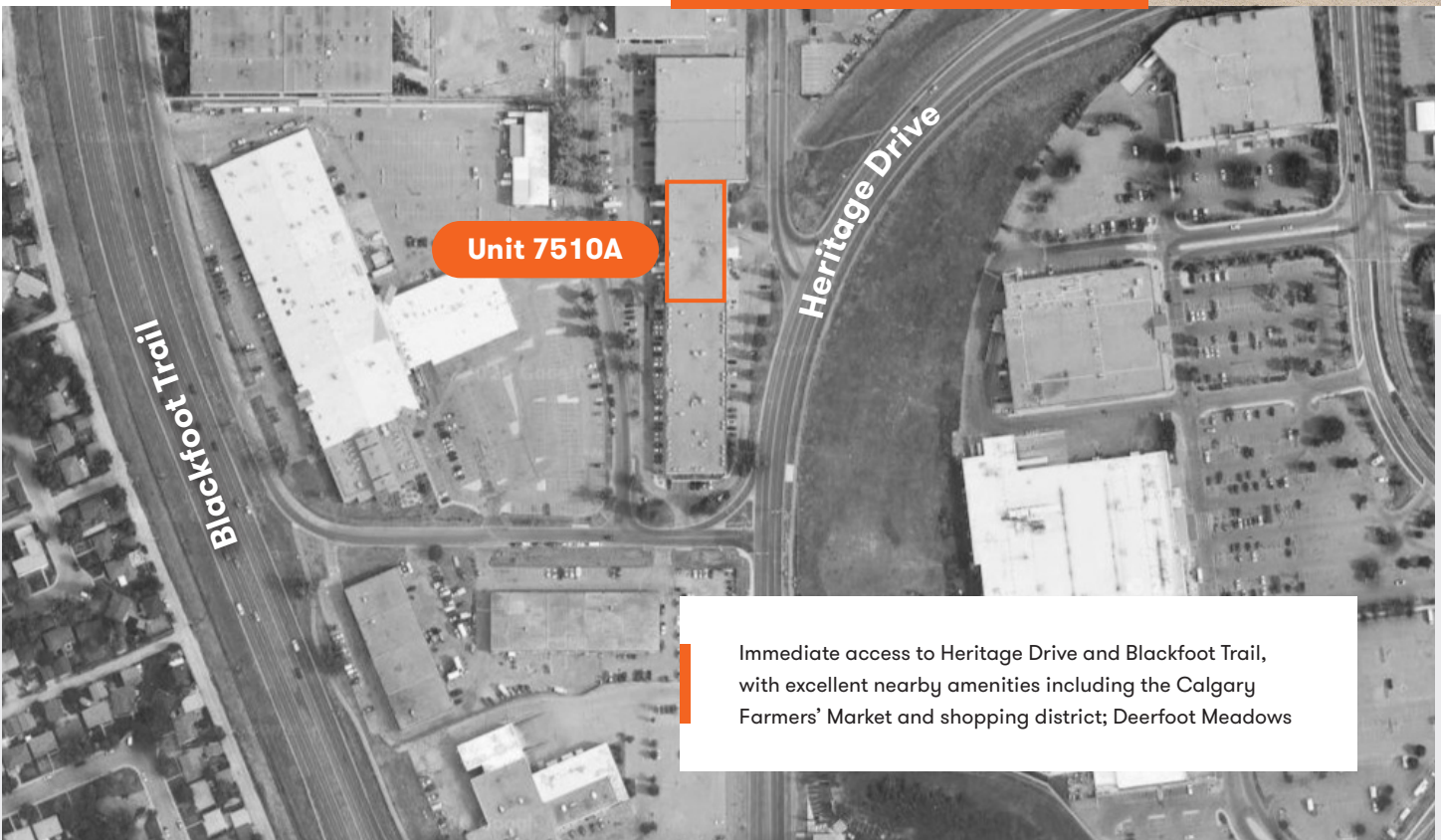
For Lease



# 7210 – 7610 5 Street SE, Unit 7510A

## Glenmore Business Park | Calgary, AB

- Available January 1, 2027
- 16,204 SF
- Warehouse/distribution space
- Small office area
- 1 drive-in door with ramp
- 4 dock loading doors with levelers

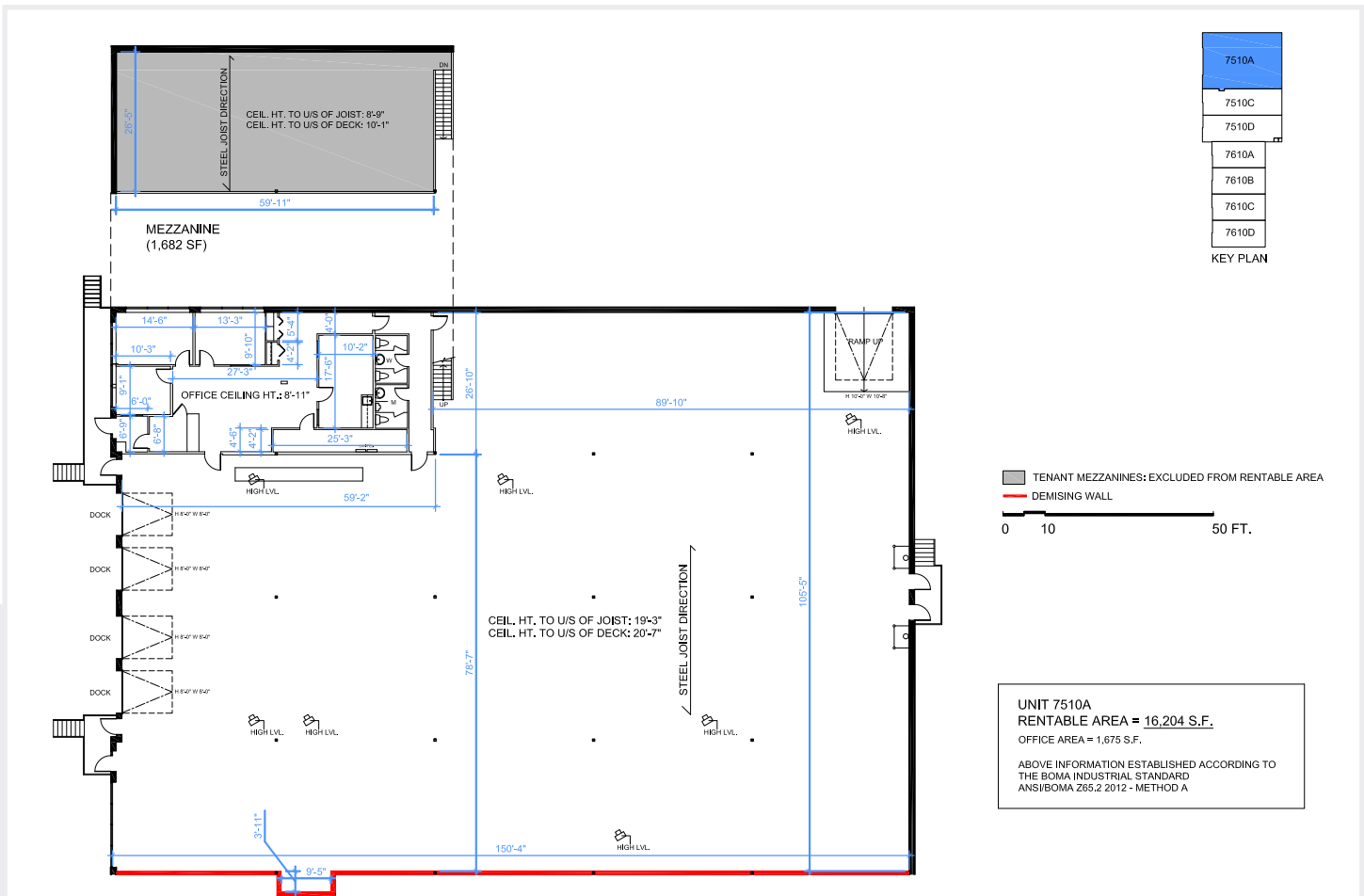


For leasing opportunities

John Vautour, Director, Leasing  
403.536.3549 | [jvautour@dream.ca](mailto:jvautour@dream.ca)

Dream Industrial REIT  
[leasing.dream.ca](http://leasing.dream.ca)

# Floor Plan



Available area:	Loading:	Ceiling Height:	Power:
<b>16,204 SF</b>	<b>4 Dock Doors 1 Drive-in Door</b>	<b>19'3"</b>	<b>200 Amps (120/208 Volts)</b>
Availability:	Rental Rates:	Operating Costs:	Zoning:
<b>January 1, 2027</b>	<b>Market Rates</b>	<b>CAM \$4.77 TAX \$2.61 (est. 2026)</b>	<b>I-G (Industrial General)</b>

Dream Industrial is an innovative and customer-focused owner, operator, and developer of high-quality industrial properties. Dream Industrial invests in and manages over 71 million square feet of industrial assets in Canada, Europe, and the United States for over 1,500 occupiers operating across a diversity of sectors. The organization has a track record of delivering best-in-class modern industrial properties globally, with a development pipeline that includes approximately 6 million square feet of active projects and an additional 7 million square feet available for expansion or built-to-suit purposes.

Dream Industrial is part of the Dream Group of Companies and is managed by Dream Unlimited Corp. (TSX:DRM), a leading global real estate asset manager and institutional investor with \$27 billion in assets under management. Dream Industrial is comprised of Dream Industrial REIT (TSX:DIR.UN) as well as several private vehicles.