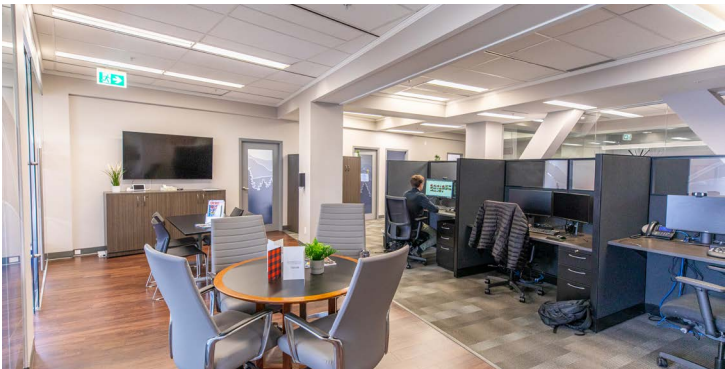




280 - 601 West Cordova Street,
Vancouver BC

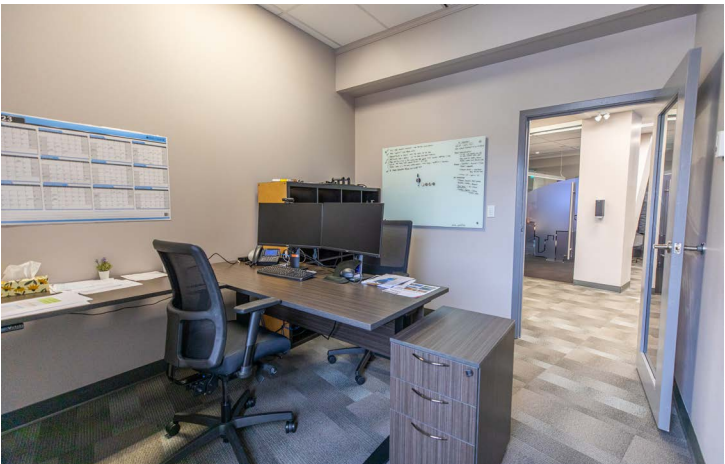
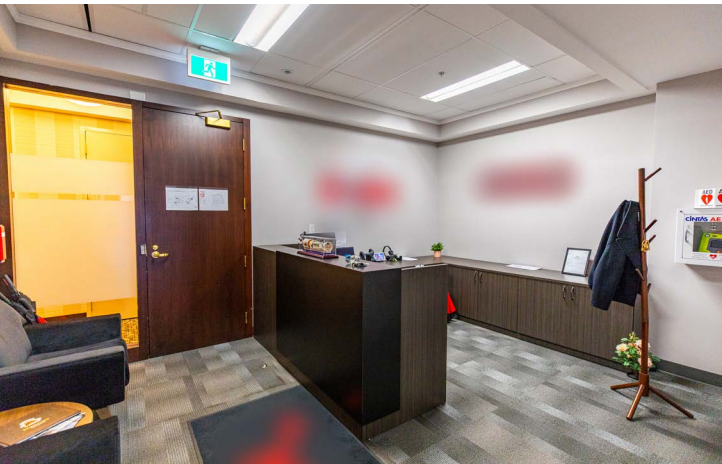
Opportunity

CBRE Limited is pleased to present an opportunity to sublease a fully improved suite on the northeast corner of the 2nd floor of The Station.



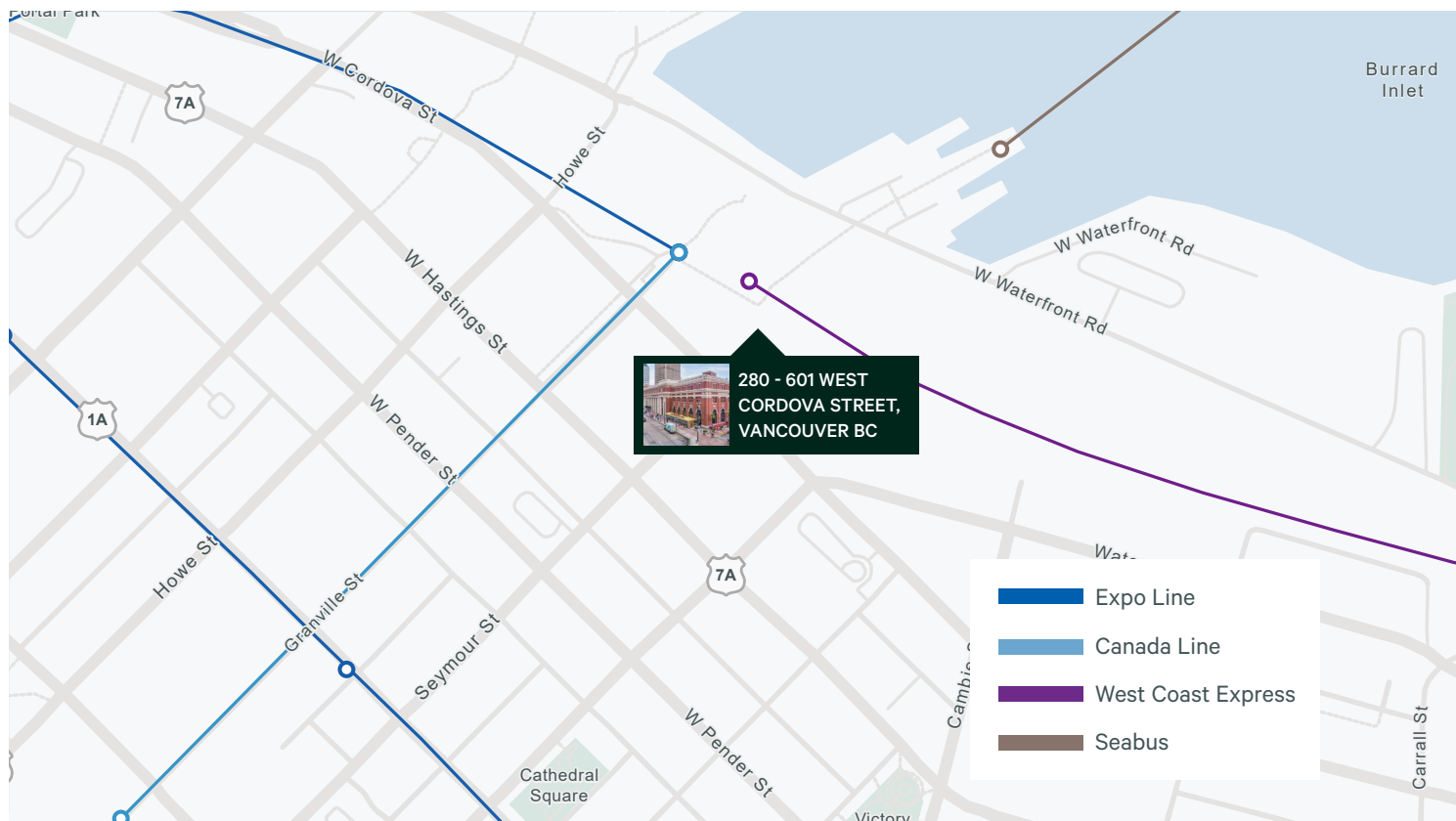
Property Details:

Available Area (SF)	3,175 SF	Expiry Date	March 31, 2026
Rent / Price	Contact Agent	Space Features	Fully Improved
Additional Rent	\$21.90 PSFPA (2024 Estimate)	Building Amenities	All forms of public transit
Availability	September 1, 2024	Location Highlights	Waterfront location



280 - 601 West Cordova Street,

Vancouver BC



The Neighbourhood

Amazing Transit Location

The Station is a Vancouver landmark, located on Vancouver's waterfront and is a transit hub with SkyTrain, SeaBus and Westcost Express, terminating at the building

Contact Agent

John Megan

Personal Real Estate Corporation

Senior Vice President, Advisory & Transaction Services

john.megan@cbre.com

604 662 5111

CBRE Limited | 1021 West Hastings Street | #2500 | Vancouver, BC V6E 0C3 | www.cbre.ca

This disclaimer shall apply to CBRE Limited, Real Estate Brokerage, and to all other divisions of the Corporation; to include all employees and independent contractors ("CBRE"). The information set out herein, including, without limitation, any projections, images, opinions, assumptions and estimates obtained from third parties (the "Information") has not been verified by CBRE, and CBRE does not represent, warrant or guarantee the accuracy, correctness and completeness of the Information. CBRE does not accept or assume any responsibility or liability, direct or consequential, for the Information or the recipient's reliance upon the Information. The recipient of the Information should take such steps as the recipient may deem necessary to verify the Information prior to placing any reliance upon the Information. The Information may change and any property described in the Information may be withdrawn from the market at any time without notice or obligation to the recipient from CBRE. CBRE and the CBRE logo are the service marks of CBRE Limited and/or its affiliated or related companies in other countries. All other marks displayed on this document are the property of their respective owners. All Rights Reserved.

Mapping Sources: Canadian Mapping Services canadamapping@cbre.com; DMTI Spatial, Enviroics Analytics, Microsoft Bing, Google Earth.

www.cbre.ca/properties

CBRE