

FOR SALE

5691 MERMAID STREET • SECHELT, BC

CDW



CDW
& ASSOCIATES
COMMERCIAL REAL ESTATE

KEVIN SIMOES, RBD, C.TECH
COMMERCIAL REALTOR®
778-549-0859
kevin@cdwandassociates.com

CHARLES WIEBE, CIPS, E. TECH
COMMERCIAL REALTOR®
778-549-8555
charles@cdwandassociates.com

cdwandassociates.com

501 - 889 Pender Street, Vancouver, BC

RE/MAX
COMMERCIAL
RE/MAX COMMERCIAL ADVANTAGE



Each office independently owned and operated.





LOCATED IN BEAUTIFUL CENTRAL SECHELT, YOU HAVE THE OPPORTUNITY TO PURCHASE THIS STAND ALONE BUILDING for use as an Owner/ Occupier space or add it to your investment portfolio and lease it out! Only minutes away from the Sunshine Coast Hwy, this property is approximately 0.15 acres (6,600 SF) in size, with the building having a foot print of ~2,700 SF. Currently being utilized as a physiotherapy clinic, this building offers a welcoming reception/waiting room upon entering with 2 individual offices located on opposite sides of one another. Walking down the hall you are flanked by multiple smaller treatment rooms which could easily be opened up to create larger work spaces if needed, or maintain the well thought out floor plan as is! Finally at the rear of the space is a large open area being used for a gym and separate men's & women's washrooms. With ample parking along the side and front of the building plus additional street parking this property really does have it all!



STAND ALONE BUILDING SECHELT, BC

PRICE:
\$1,185,000

SALE TYPE:
ASSET

BUILDING SIZE:
2,674 SF²

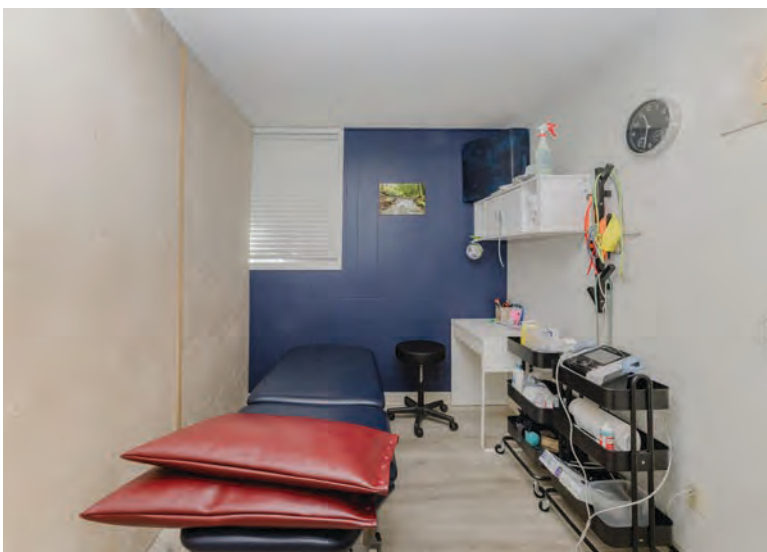
LAND SIZE:
6600 SF²

MLS NUMBER:
C8075260

ZONING:
C2 - TOURIST & MARINE COM-
MERCIAL TWO ZONE





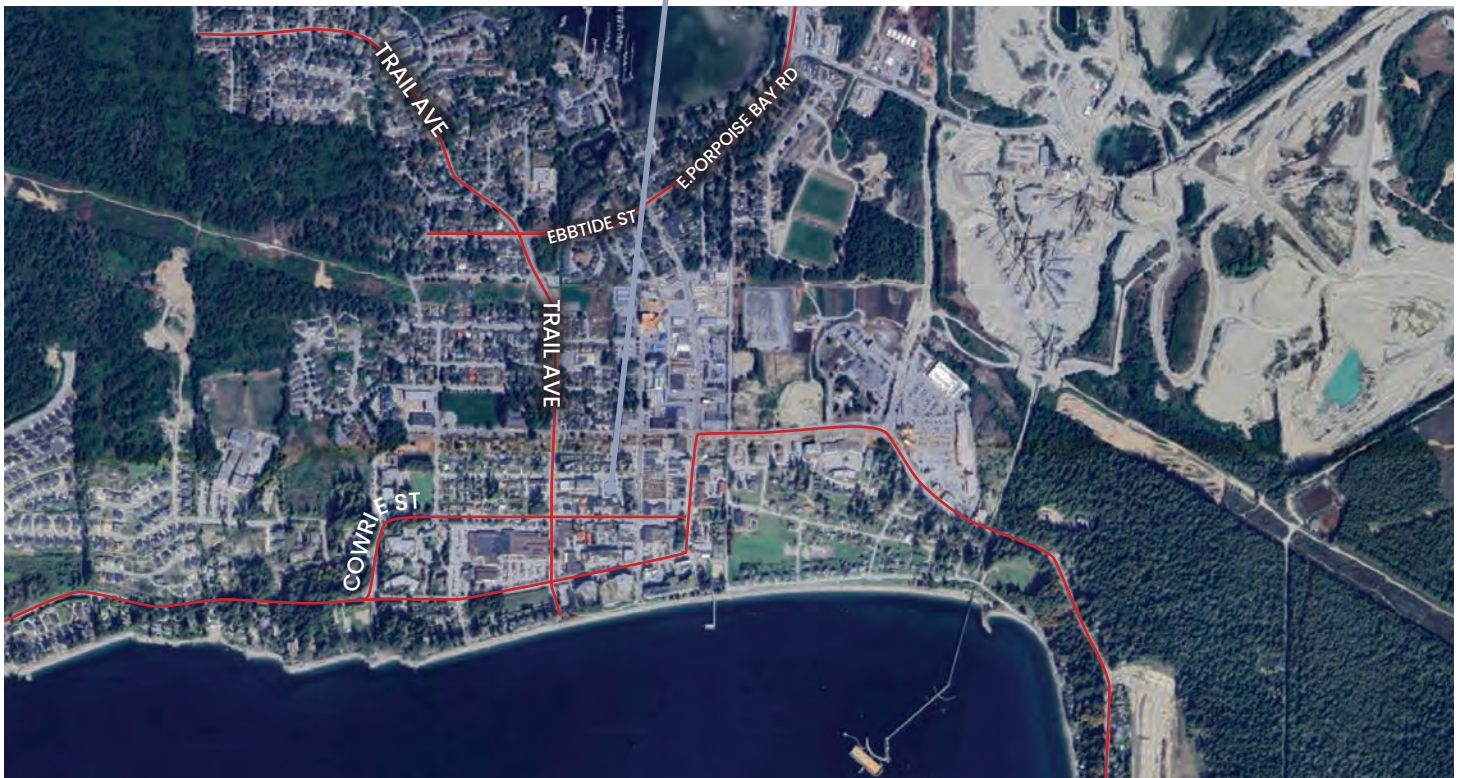
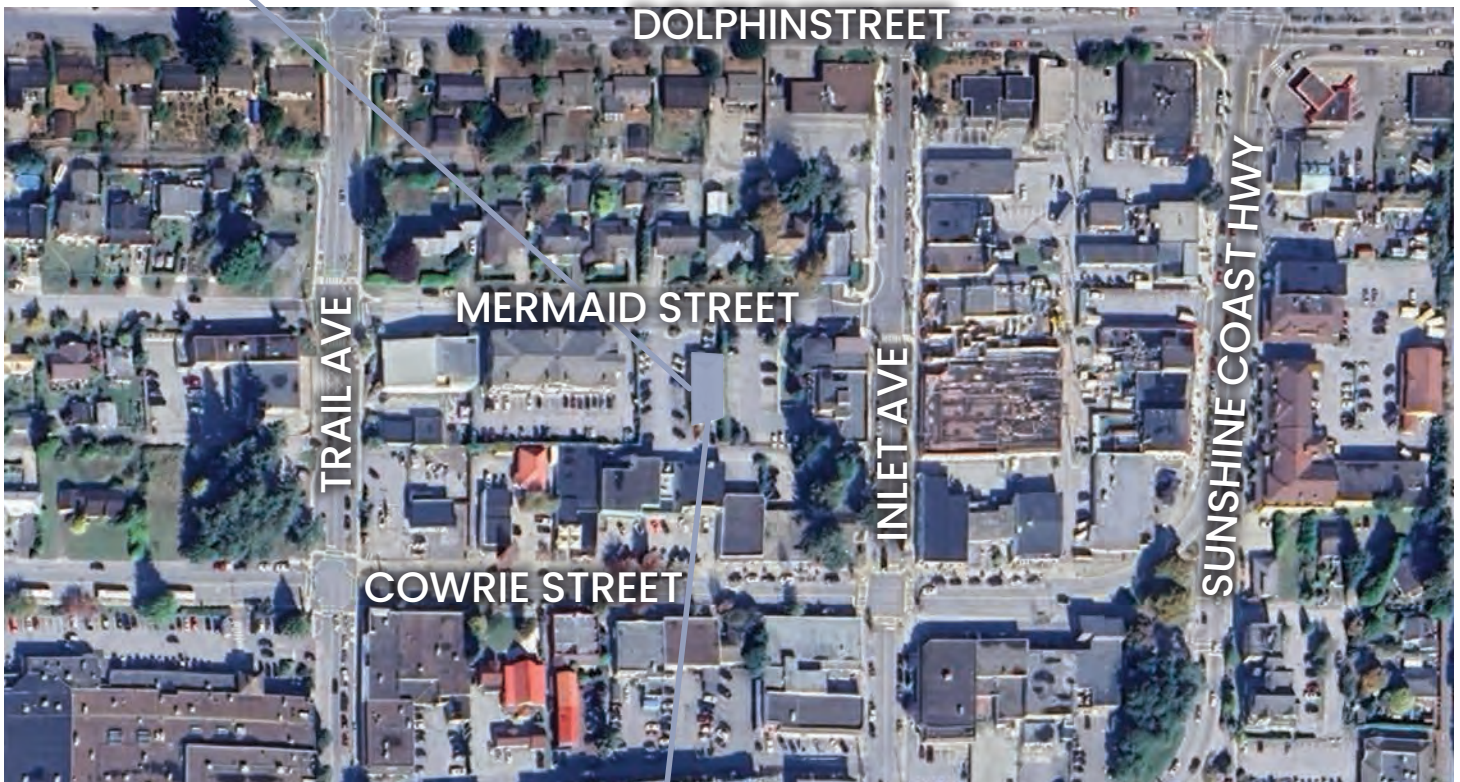








5691 MERMAID STREET • SECHULT, BC



SUNSHINE COAST HWY

The information contained herein has been obtained through sources deemed reliable by CDW & Associates - RE/MAX Commercial Advantage, but cannot be guaranteed for its accuracy. We recommend to the buyer that any information which is of special interest should be obtained through independent verification. ALL MEASUREMENTS ARE APPROXIMATE.

FREESTANDING
BUILDING
IN CENTRAL
SECHELT, WITH
QUICK ACCESS
FROM MULTIPLE
DIRECTIONS

ONLY A FEW
BLOCKS NORTH
OF THE SUNSHINE
COAST HWY



District of
SECHELT

CDW & ASSOCIATES COMMERCIAL REAL ESTATE

KEVIN SIMOES, RBD, C.TECH
COMMERCIAL REALTOR®
778-549-0859
kevin@cdwandassociates.com

CHARLES WIEBE, CIPS, E. TECH
COMMERCIAL REALTOR®
778-549-8555
charles@cdwandassociates.com

