



DREAM
COLLECTION
FINANCIAL DISTRICT



PREMIUM OFFICE LEASING OPPORTUNITIES

330 Bay Street

Leasing Opportunities

Building Specifications

Size	167,184SF
Year Built	1925
Number Of Floors	16
Tenant Conference Room*	Small room \$230 /day Large room \$345 /day Multi room \$460/day
*Plus 15% administrative fee and applicable taxes	
Operating Costs	\$22.65 (PSF/YR)
Realty Tax	\$8.88 (PSF/YR)
Total Additional Rent	\$31.53 (PSF/YR)

Certifications



BOMA Best Certified Silver



WELL Health and Safety Rated 2024

Building Features

- Public Transit Surface Route
- 8'6" Ceiling Height (slab to T-bar)
- Satellite Dish Capability
- Fibre Optic Capability
- Central HVAC Distribution system
- Fire Detection System
- Sprinkler System
- Manned Security

On-site Amenities

- Tenant Conference Centre
- 24/7 Security
- CKTL & Co.
- Estiatorio Milos

Nearby Amenities

- PATH System
- Hy's Steakhouse & Cocktail Bar
- Daphne's Restaurant
- John & Sons Oyster House
- Florin Trattoria
- Starbucks
- CF Toronto Eaton Centre
- All Major Banks
- Fitness Centres
- Nathan Phillips Square
- St. Regis Hotel



[View virtual tour*](#) ↗

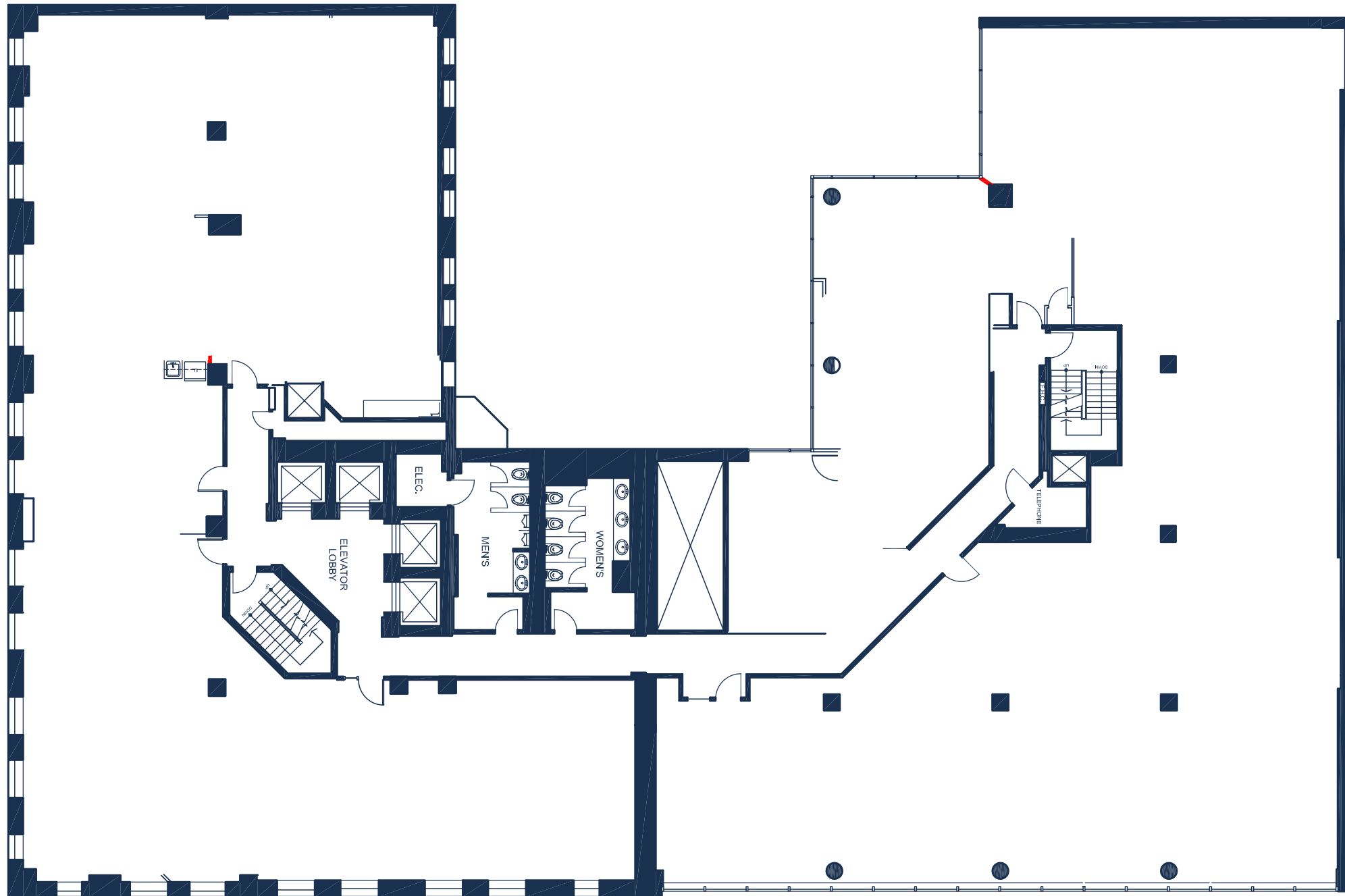
*Virtual tour is artist rendering. Not as delivered.

- **16th Floor**
Data Centre
Full Floor Opportunity
Suite 1600 | 5,576 SF | Available Immediately
- **15th Floor**
Suite 1502 | 846 SF | Jan 1, 2027
- **14th Floor - Contiguous: 6,078 SF**
Suite 1401 | 1,464 SF | **MODEL SUITE**
Sep 1, 2026
Suite 1400 | 4,614 SF | **MODEL SUITE**
Available Immediately
- **13th Floor**
Suite 1304 | 1,651 SF | **MODEL SUITE**
- **12th Floor**
Suite 1200 | 1,443 SF | **MODEL SUITE**
Sep 1, 2026
- **8th Floor**
Suite 820 | 4,992 SF | Available Immediately
Suite 812 | 2,969 SF | Sep 1, 2026
- **7th Floor**
Suite 700 | 8,024 SF | Apr 1, 2027
- **6th Floor**
Suite 610 | 4,402 SF | Available Immediately
- **5th Floor**
Suite 509 | 2,322 SF | Available Immediately
Suite 507 | 2,288 SF | Available Immediately
Suite 500 | 2,638 SF | Available Immediately
- **3rd Floor - Full Floor Opportunity**
Suite 300 | 13,347 SF | Available Immediately
- **2nd Floor**
Suite 200 | 6,965 SF | Nov 1, 2026

THE BUILDING -

Standard Floorplate

~13,000 SF | 8'6" Ceiling Height | Full floor suite in base building condition



ELEVATING YOUR EXPERIENCE-

Recent Improvements

- Newly renovated lobby and washrooms
- State-of-the-Art building systems
- Modern and refreshed common areas, elevators, and facade



ELEVATING YOUR EXPERIENCE-

Amenities at Your Doorstep

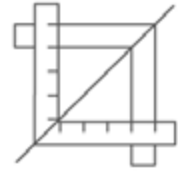


DREAM OFFICE-

Stress-Free Turnkey



Expertly designed,
furnished and
move-in ready



Experienced in-house
Project Management
and Construction Team



Simplified process
committed to making
design and move in
easy for tenants



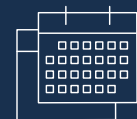
Short-Form Lease



Straight
to Lease



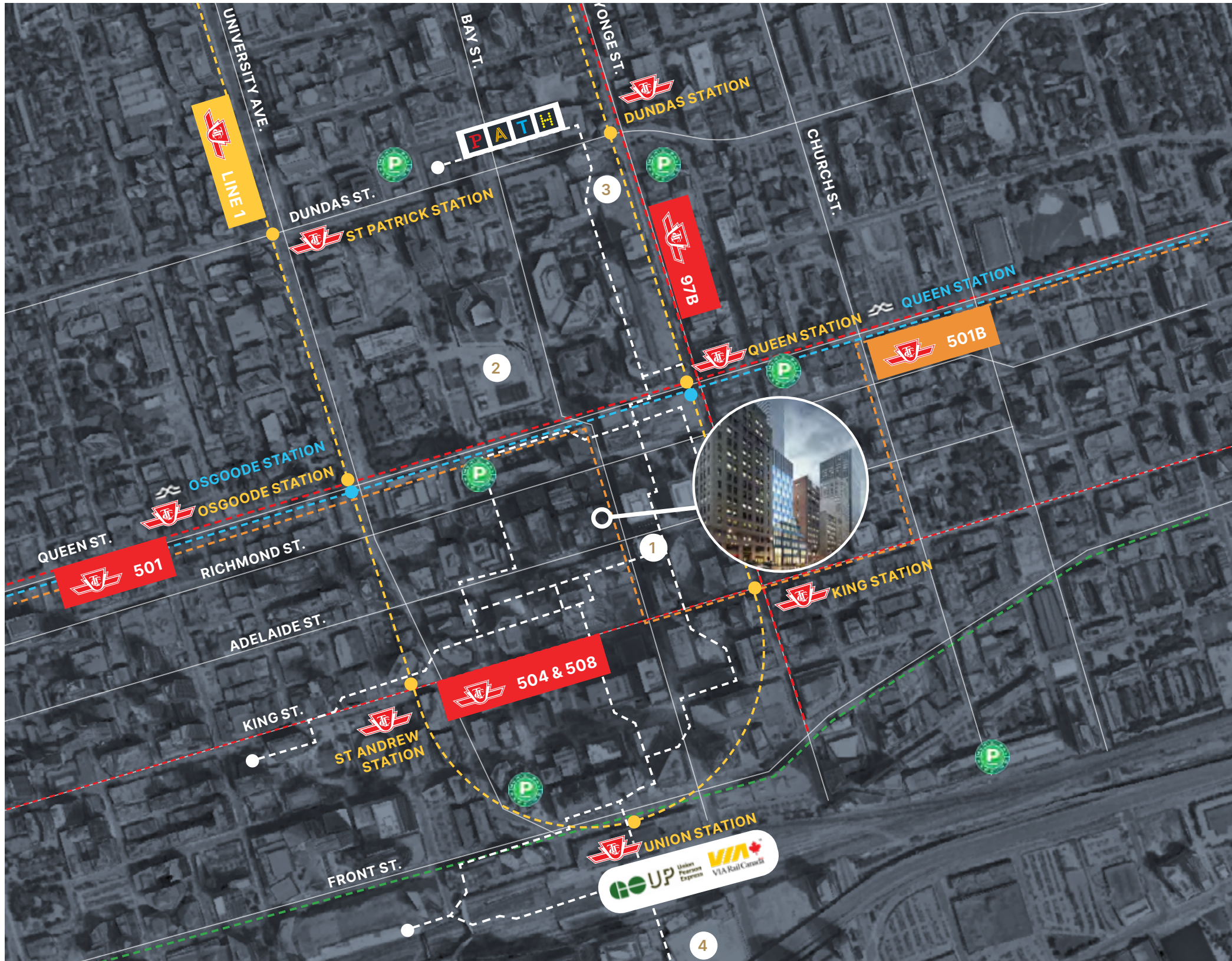
Seven Page
Document



For Short-Term
Deals Only

Three years and under

Best in Class Accessibility

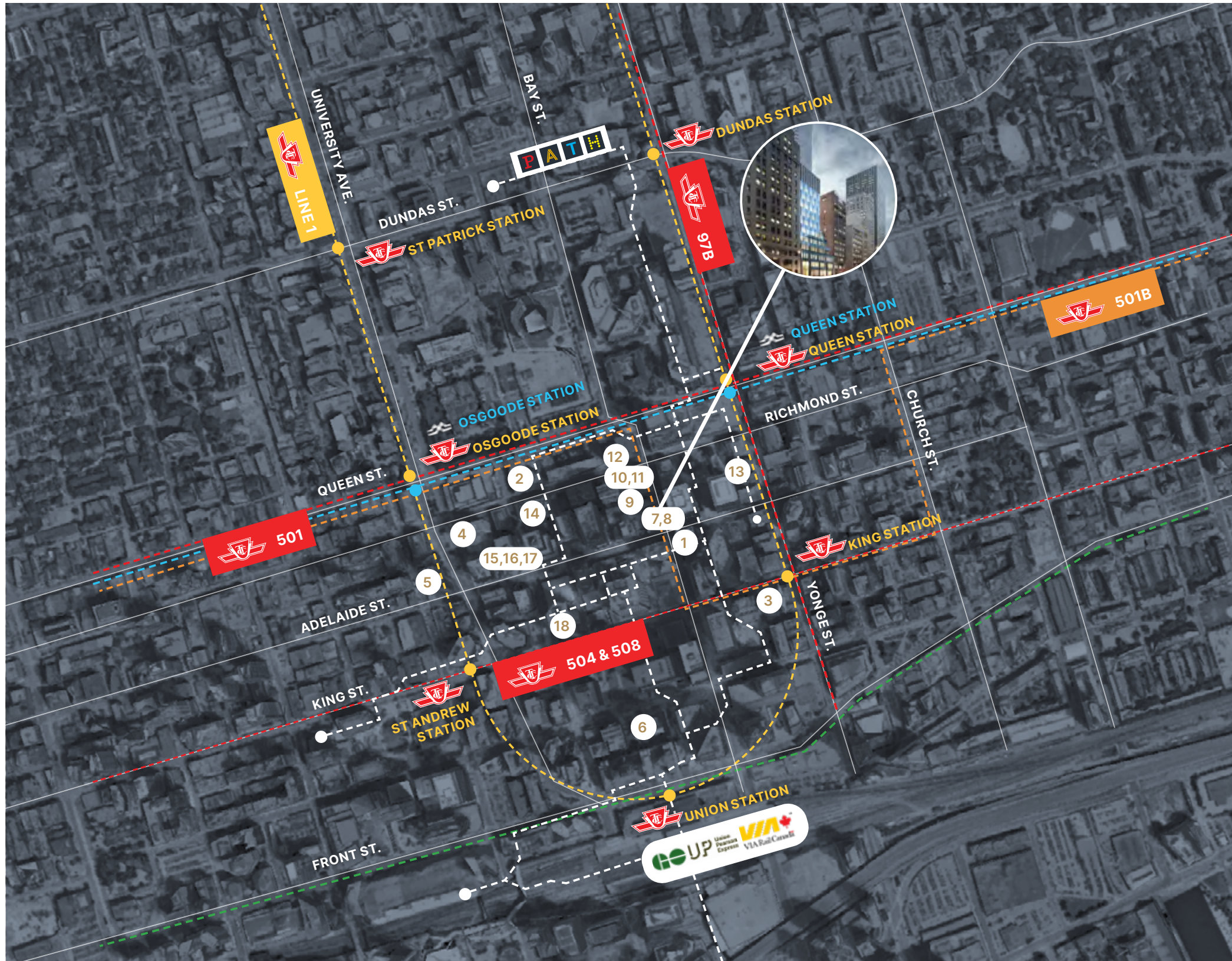


- 1 Closest PATH entrance (333 Bay St.): **88m** **PATH**
- 2 Nathan Philips Square: **290m**
- 3 CF Toronto Eaton Centre: **350m**
- 4 Scotiabank Arena: **700m**

- Yonge-University Subway Line
- TTC Bus Route
- Future Ontario Line
- GO Transit Line
- Green P Parking

- 38 min.**
Pearson International via UP Express
- 20 min.**
Drive to Billy Bishop Airport
- 5 min.**
Walk to Queen Station or King Station
- 5 min.**
Walk to Union Station

A Hub of Convenience & Culture



Hotels

- 1 The St. Regis Toronto: 63m
- 2 Sheraton Centre Toronto: 450m
- 3 One King West Hotel & Residence: 350m
- 4 Hilton Toronto: 500m
- 5 Shangri-La Toronto: 500m
- 6 Fairmont Royal York: 650m

Food & Beverage

- 7 Estiatorio Milos: On-site
- 8 CKTL & Co.: On-site
- 9 John & Sons Oyster House: 110m
- 10 Daphne Restaurant: 170m
- 11 Wine Academy: 170m
- 12 Florin' on Richmond: 180m
- 13 The Chase: 260m
- 14 Chef's Hall: 350m
- 15 Alobar: 350m
- 16 Sushi Yugen: 350m
- 17 Chop Restaurant & Steakhouse: 350m
- 18 Black + Blue: 400m

- Yonge-University Subway Line
- TTC Bus Route
- Future Ontario Line
- GO Transit Line

Byron Ahmet*
Executive Vice President
byron.ahmet@cbre.com
416 815 2354

Jennifer Millar**
Associate Vice President
jennifer.millar@cbre.com
647 328 8859

Christopher Valela**
Associate Vice President
chris.valela@cbre.com
416 662 2477

CBRE Limited
Real Estate Brokerage
145 King St W
Toronto, ON. M5H 1J8



This disclaimer shall apply to CBRE Limited, Real Estate Brokerage, and to all other divisions of the Corporation; to include all employees and independent contractors ("CBRE"). All references to CBRE Limited herein shall be deemed to include CBRE, Inc. The information set out herein, including, without limitation, any projections, images, opinions, assumptions and estimates obtained from third parties (the "Information") has not been verified by CBRE, and CBRE does not represent, warrant or guarantee the accuracy, correctness and completeness of the Information. CBRE does not accept or assume any responsibility or liability, direct or consequential, for the Information or the recipient's reliance upon the Information. The recipient of the Information should take such steps as the recipient may deem necessary to verify the Information prior to placing any reliance upon the Information. The Information may change and any property described in the Information may be withdrawn from the market at any time without notice or obligation to the recipient from CBRE. CBRE and the CBRE logo are the service marks of CBRE Limited and/or its affiliated or related companies in other countries. All other marks displayed on this document are the property of their respective owners. All Rights Reserved.

*Broker **Sales Representative