

# FOR LEASE

10132 105 STREET, EDMONTON, AB


±800-2,402 SQ. FT.



**CENTRAL DOWNTOWN SECOND FLOOR OFFICE SPACE**

**LIZOTTE**  
AND ASSOCIATES REAL ESTATE INC

 [www.lizotterealestate.com](http://www.lizotterealestate.com)

 780.488.0888

No warranty or representation, expressed or implied, is made as to the accuracy of the information contained herein, and same is submitted subject to errors, omissions, change of price, rental or other conditions, withdrawal without notice, and to any specific listing condition, imposed by our principals.

# FOR LEASE

## CENTRAL DOWNTOWN OFFICE SPACE

### PROPERTY INFORMATION

**Municipal Address:** 10132 105 Street, Edmonton, AB

**Available Size:** Unit 200 ±2,402 SF

Unit 206 ±800 SF

**Zoning:** Urban Warehouse Zone (UW)

**Parking:** Monthly Parking Available at \$175/month

**Possession:** Immediately

\$\$\$

**Lease Rate:** \$14.00/SF

**OP Costs:** \$12.85/SF Power included for Unit 204

### PROPERTY HIGHLIGHTS

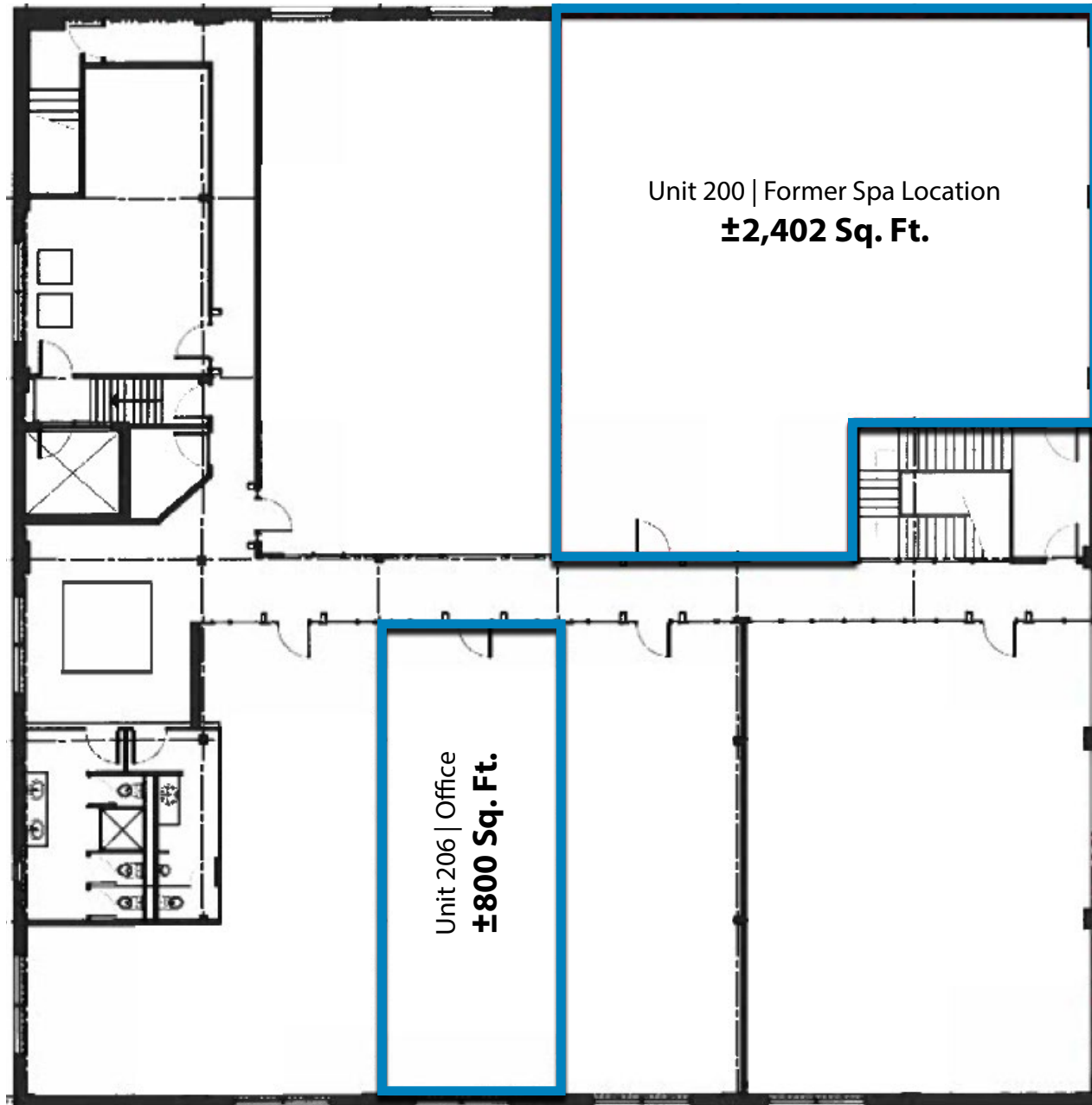
- Second floor office space available in the heart of Downtown Edmonton
- Suitable for professional office, administrative, consulting, wellness, or service-based user
- Flexible office layouts
- Excellent central location with convenient access to Jasper Avenue. Ideal for businesses seeking accessible and affordable office spaces in the heart of Downtown Edmonton.

### DEMOGRAPHICS WITHIN 5KM



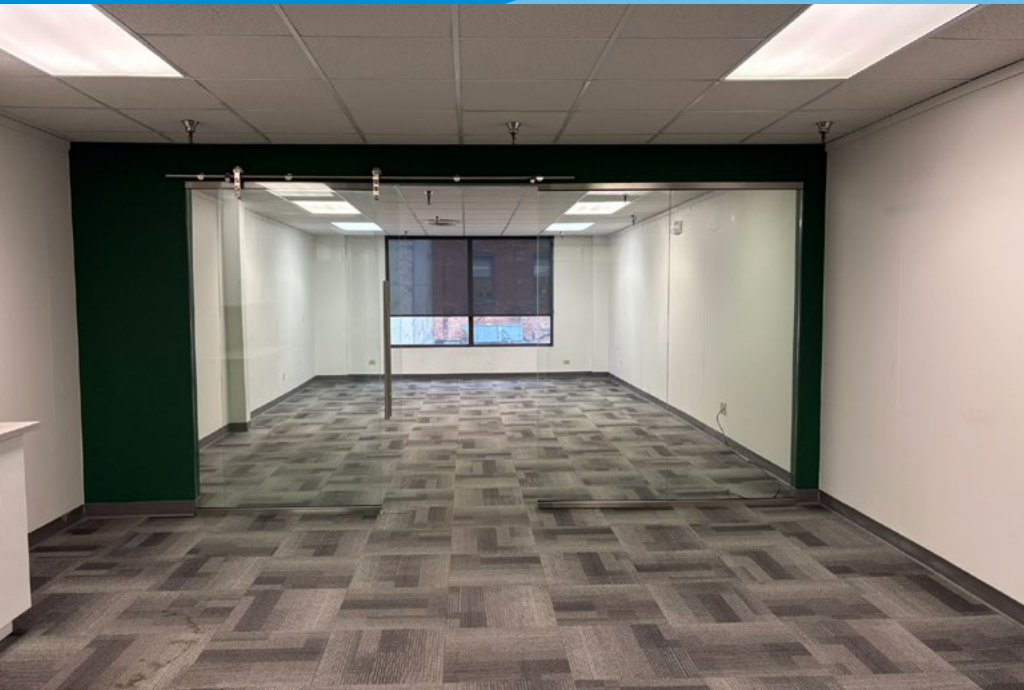
# FOR LEASE

## CENTRAL DOWNTOWN OFFICE SPACE



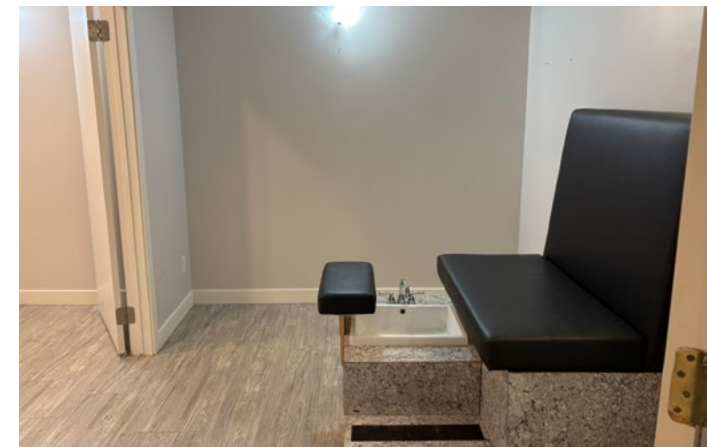
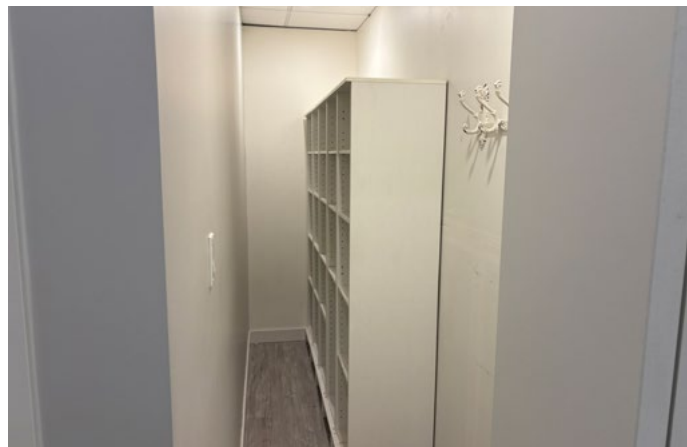
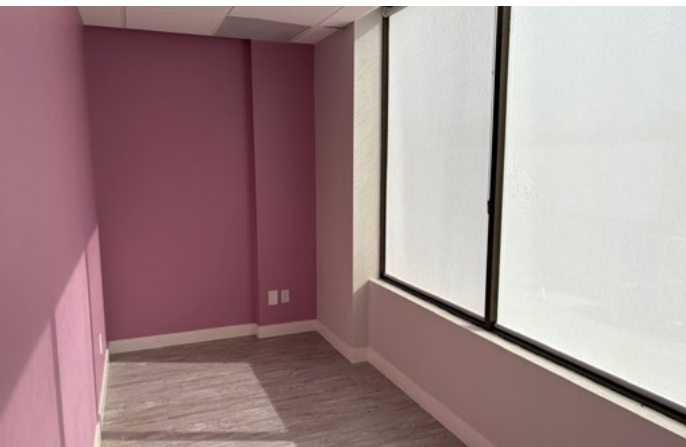
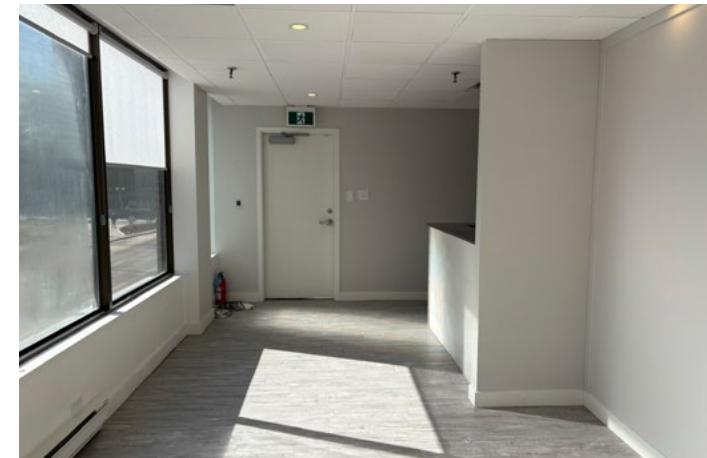
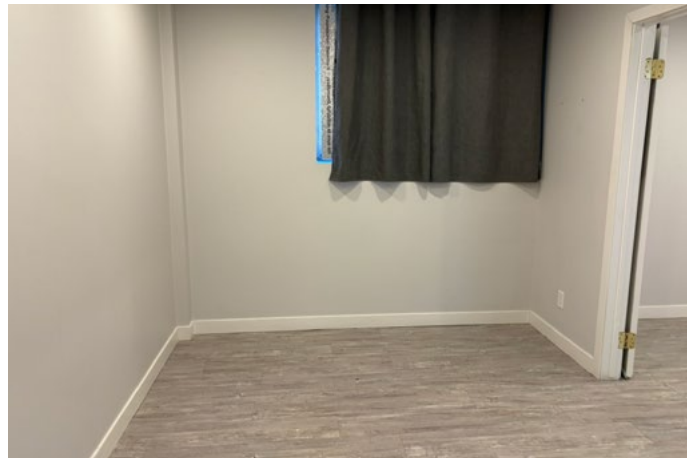
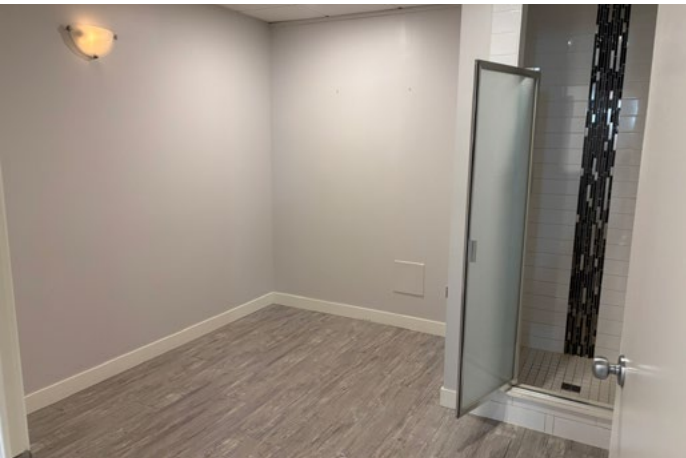
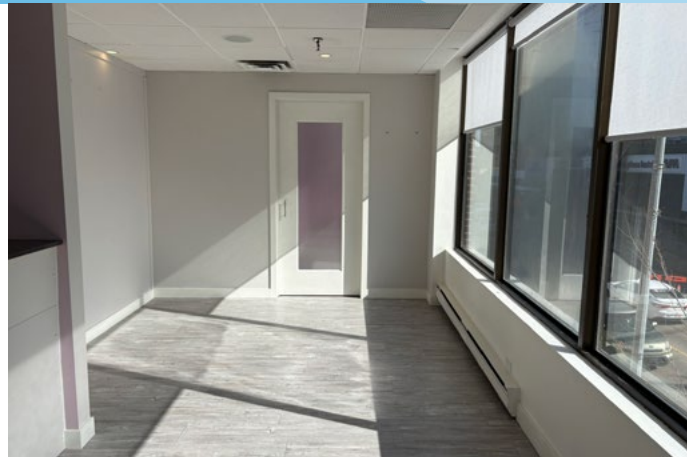
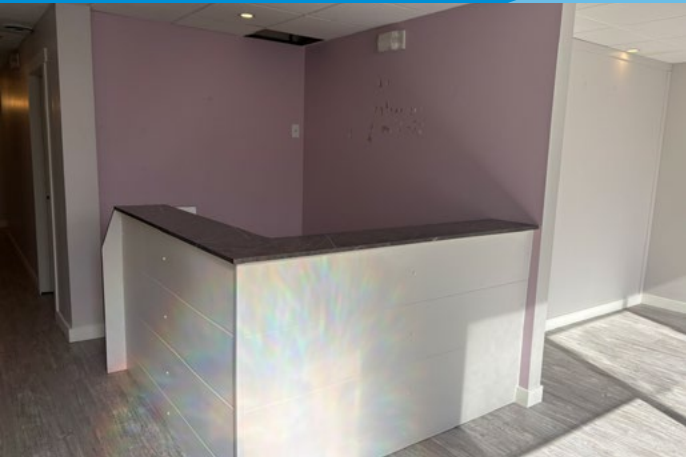
# FOR LEASE

## CENTRAL DOWNTOWN OFFICE SPACE



# FOR LEASE

## CENTRAL DOWNTOWN OFFICE SPACE



# FOR LEASE

**LIZOTTE**  
AND ASSOCIATES REAL ESTATE INC

## CONTACT

**Chuck Clubine**  
Senior Associate  
Cell: 780.264.7773  
Direct: 780.784.6553  
chuck@lizotterealestate.com

**Tom Dean**  
Associate  
Cell: 780.920.8019  
Direct: 780.784.6550  
tom@lizotterealestate.com

**James Estayo**  
Associate  
Cell: 780.991.3623  
Direct: 780.784.6556  
james@lizotterealestate.com

**Sidaq Gill**  
Associate  
Direct: 780.784.5357  
sidaq@lizotterealestate.com

