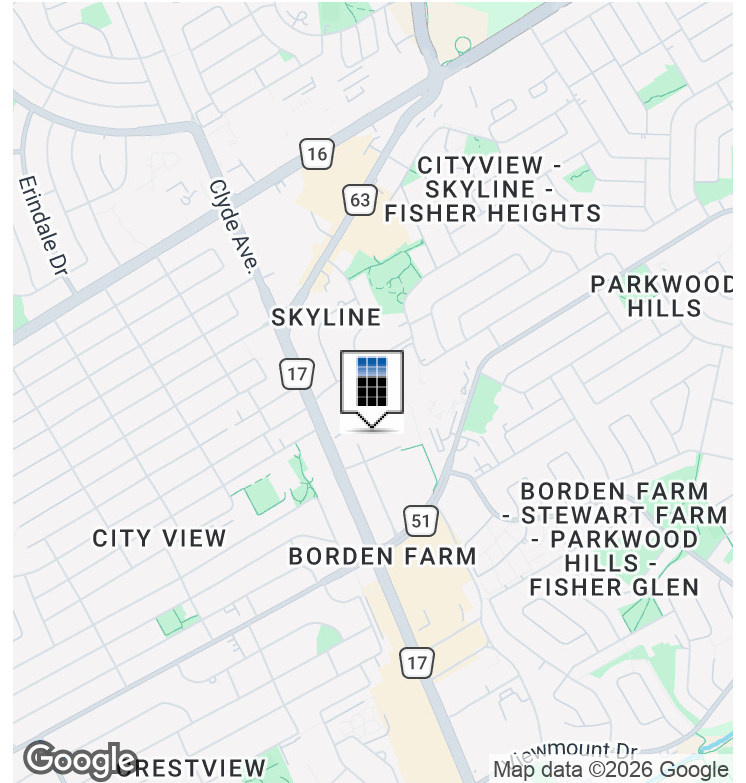


# EMERALD PLAZA – SUITE 400

1547 MERIVALE ROAD OTTAWA, ON K2G 4V3



## OFFERING SUMMARY

Lease Rate:	\$16 SF/yr (NNN)
Additional Rent:	\$19.85 SF/yr
Building Size:	155,715 SF
Available SF:	5,645 SF
Year Built:	1986
Renovated:	2010
Zoning:	AM 10

## PROPERTY OVERVIEW

Discover the ideal commercial lease opportunity at 1547 Merivale Road, Ottawa. This modern and professionally managed property offers exceptional features, including high exposure on Merivale Road and convenient access via public transit. The property boasts ample covered and surface parking and elevator access for added convenience. Pylon signage provides excellent visibility, and the well-appointed onsite amenities cater to all business needs. With a spacious and bright interior layout, this property offers a professional and welcoming environment. Don't miss the opportunity to lease in this sought-after location.

## PROPERTY HIGHLIGHTS

- – High exposure location on Merivale Road
- – Ample covered and surface parking available
- – Convenient elevator access
- – Pylon signage for great visibility
- – Well-appointed onsite amenities for convenience
- – Modern and professional building design
- – Accessible by public transit for easy commuting



**STACEY KENNEY**

+1(613)224.5464 x114  
 skenney@merkburn.com

**MERKBURN HOLDINGS LTD.**

2191 Thurston Drive, Suite 4, Ottawa, ON K1G 6C9  
 merkburn.com

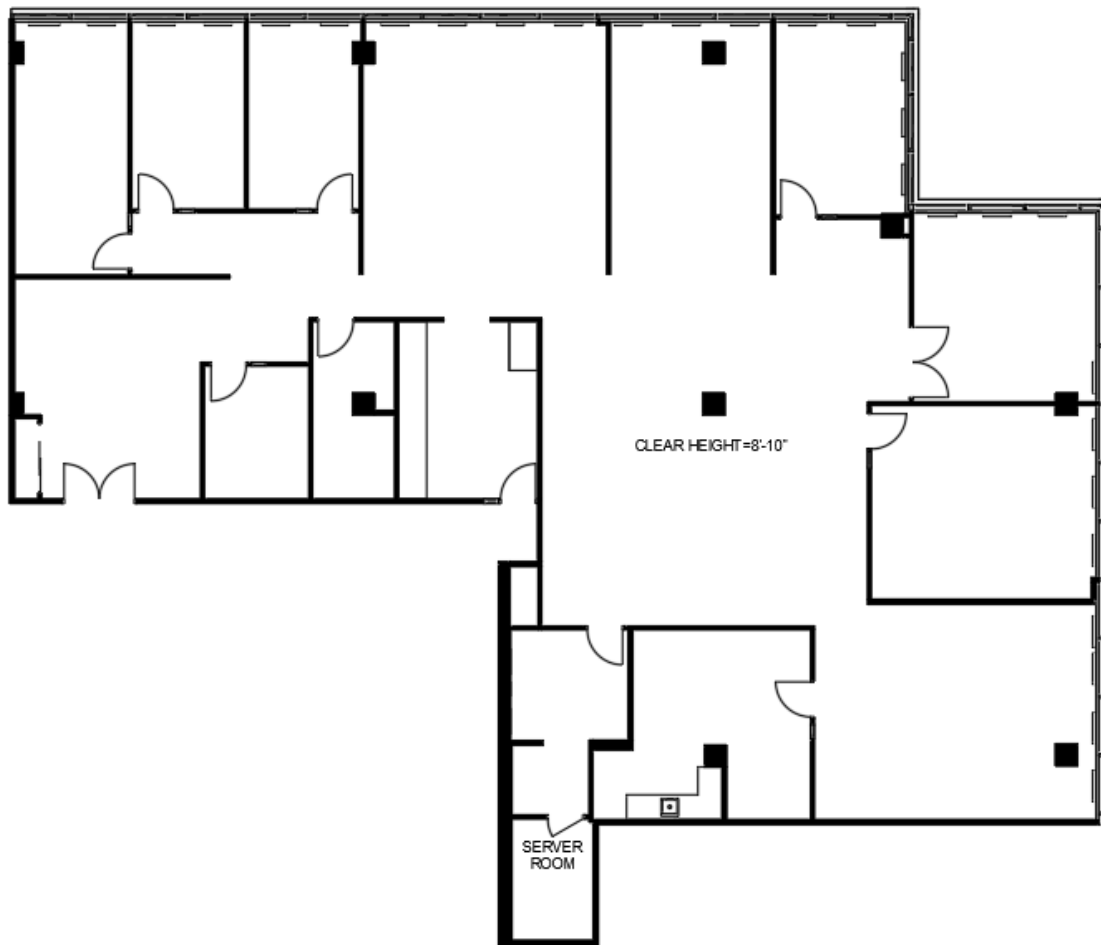
FOR LEASE



# EMERALD PLAZA

1547 MERIVALE ROAD OTTAWA, ON K2G 4V3

SUCCESS IS WITHIN US



5,645 SF



**STACEY KENNEY**  
+1(613)224.5464 x114  
skenny@merkburn.com

**MERKBURN HOLDINGS LTD.**  
2191 Thurston Drive, Suite 4, Ottawa, ON K1G 6C9  
merkburn.com

FOR LEASE



SUCCESS IS WITHIN US

# EMERALD PLAZA

1547 MERIVALE ROAD OTTAWA, ON K2G 4V3



**STACEY KENNEY**  
+1(613)224.5464 x114  
skenney@merkburn.com

**MERKBURN HOLDINGS LTD.**  
2191 Thurston Drive, Suite 4, Ottawa, ON K1G 6C9  
merkburn.com