

FOR LEASE

In the Heart of Winnipeg's Busiest Retail Node, Polo Park
Polo Festival, 655-695 Empress Street, Winnipeg, Manitoba



BUSY
RETAIL NODE



216,000+
DAYTIME POPULATION



GREAT
ACCESS



AMPLE
PARKING

www.shindico.com

Shindico

FOR LEASE

Polo Festival, 655-695 Empress Street, Winnipeg, Manitoba



CENTERED IN WINNIPEG'S DOMINANT RETAIL NODE

The Polo Park retail node is dominated by large national retailers and **serves shoppers from all over Manitoba**. The Polo Park area is undergoing a transformation with a significant number of multifamily buildings with **thousands of first-class multifamily units** proposed to be constructed over the next decade.

- Anchored by Home Depot, other tenants include: Chapters, Dollarama, Modern Beauty, Thrift Store, Prairie Summit, Chatters, Montana's, Burger King, Khab Tapioca, and ChungChun.
- Directly adjacent to CF Polo Park, Winnipeg's busiest indoor shopping centre with **10 million visitors annually**.
- Next door to the exciting new Plaza at Polo and Polo North developments featuring Winnipeg's first P.F. Chang's, Winners, HomeSense, Marshalls, Mark's, Western Financial and IntouchCX.
- Surrounded by well-known tenants such as Walmart, Save-On Foods, Canadian Tire and Scotiabank Theatre.

204.474.2000

Shindico

FOR LEASE

Polo Festival, 655-695 Empress Street, Winnipeg, Manitoba

PROPERTY SUMMARY

Available (January 1, 2026)	3,044 SF
Net Rent	TBN
Property Taxes (2025 est.)	\$6.03/SF
CAM* (2025 est.)	\$4.14/SF
Zoning	C4

*plus management fee

LOCATION

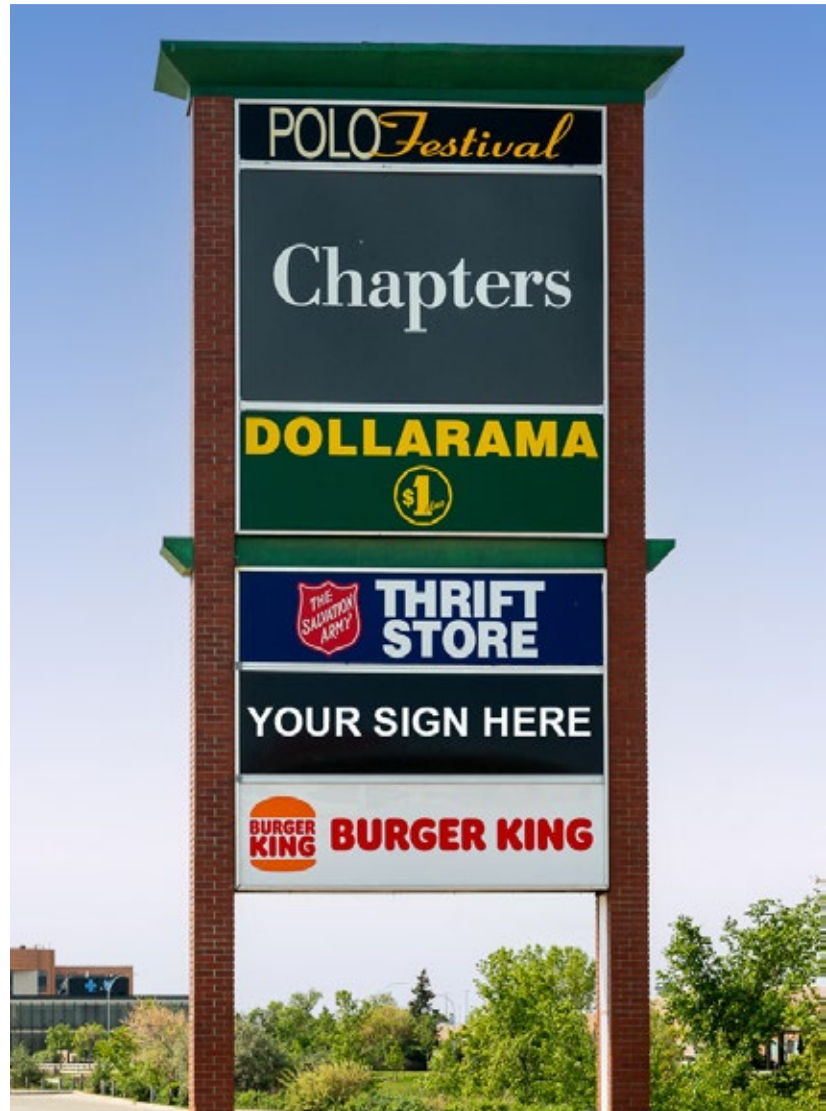
- New restaurant opening Fall 2025.
- Great exposure at a **controlled intersection** on the northeast corner of Empress Street and Maroons Road.
- Less than 4 km southeast of Winnipeg James Armstrong Richardson International Airport
- Parking for approximately 900 vehicles.
- 14 transit routes serve the Polo Park area, connecting to all quadrants of the city.

DEMOGRAPHICS

Retail Node

Total Population	101,743
Daytime Population	216,271
Households	45,366
Median Age	36.1
Avg. Household Income	\$76,935

Environics Analytics ©2024



FOR LEASE

Polo Festival, 655-695 Empress Street, Winnipeg, Manitoba

SITE PLAN



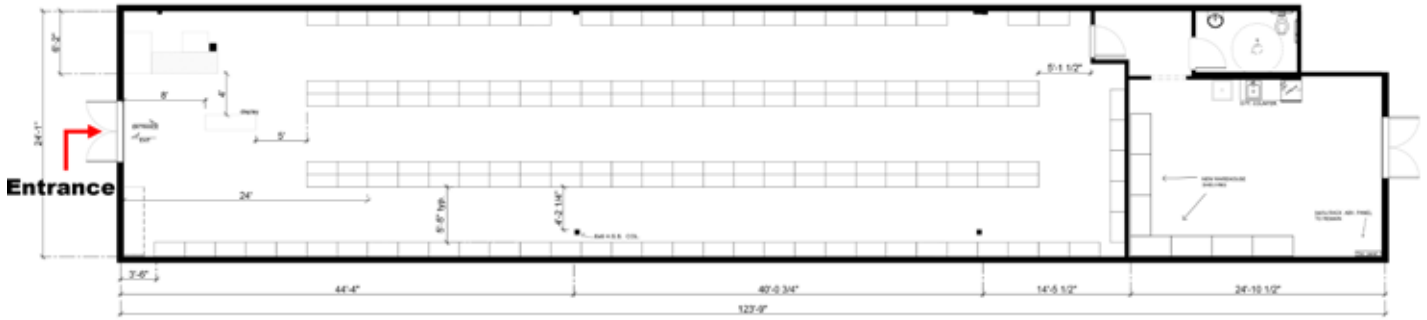
204.474.2000

Shindico

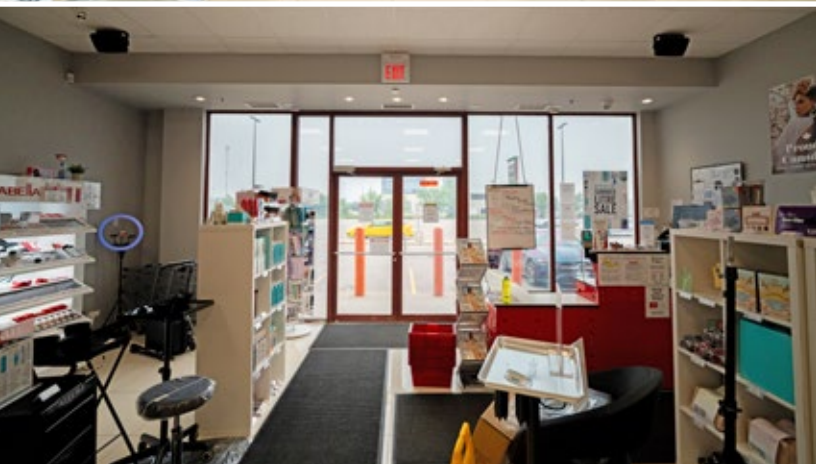
FOR LEASE

Polo Festival, 655-695 Empress Street, Winnipeg, Manitoba

FLOOR PLAN



[CLICK HERE TO TAKE A VIRTUAL TOUR](#)



FOR LEASE

Polo Festival, 655-695 Empress Street, Winnipeg, Manitoba



FOR MORE INFORMATION, PLEASE CONTACT:

Dino Alevizos*

*Services provided by Dino Alevizos Personal Real Estate Corporation

P (204) 928-8209

C (204) 781-9717

dalevizos@shindico.com

Shindico Realty Inc.

200-1355 Taylor Avenue

Winnipeg, Manitoba R3M 3Y9

P (204) 474-2000

inquire@shindico.com

www.shindico.com

Shindico

Succeeding by Helping Others Succeed



Shindico is dedicated to the protection of the environment and the communities that we are a part of.

The accuracy of the information set out herein has not been confirmed, and Shindico Realty Inc. and its affiliates make no representations or warranties as to the accuracy of the information and assumes no responsibility for errors or omissions. The recipient is responsible to verify the accuracy of any information and bears all risk related to any inaccuracies.091725