

# SPACE FOR LEASE

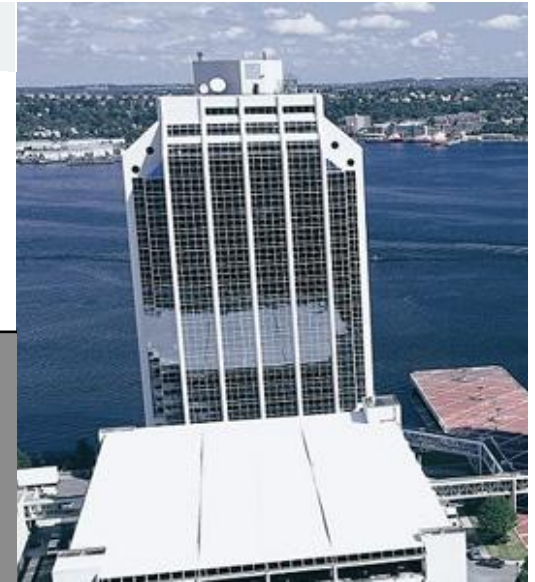
## Purdy's Wharf Tower II Suite 1705

1969 Upper Water Street  
Halifax Canada B3J 3R7

### CONTACT INFORMATION

GWL Realty Advisors Inc  
(902) 421-1122 | [pwoneserve@gwlra.com](mailto:pwoneserve@gwlra.com)

Availability: Now

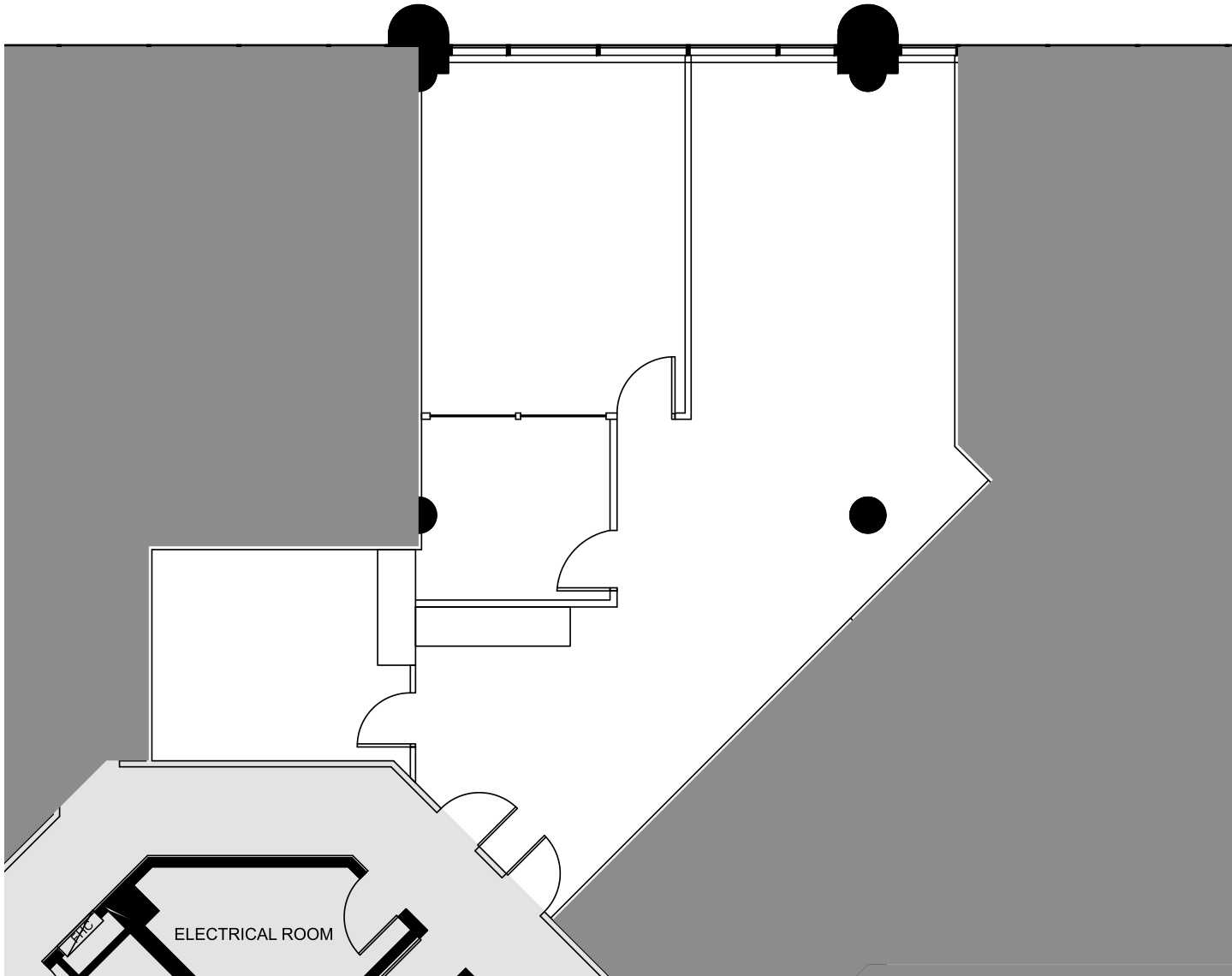


### INFORMATION

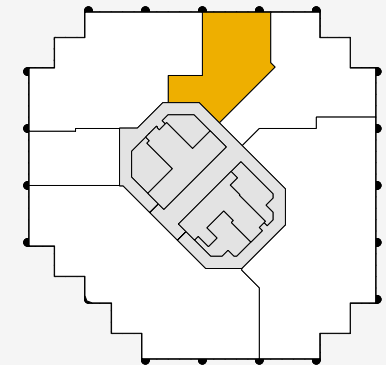
**SUITE:** 17th floor, Suite 1705

**RENTABLE AREA:** 1,535 sq.ft.

Purdy's Wharf Tower Two is a 22-storey Class "AAA" office building that is the prominent business address in Halifax. It is attractively located on the Waterfront and is connected to the Pedway system in Halifax's Central Business District. The building features a striking coloured glass and concrete exterior and the complex dominates the Halifax skyline.



SUITE VIEW



KEY PLAN