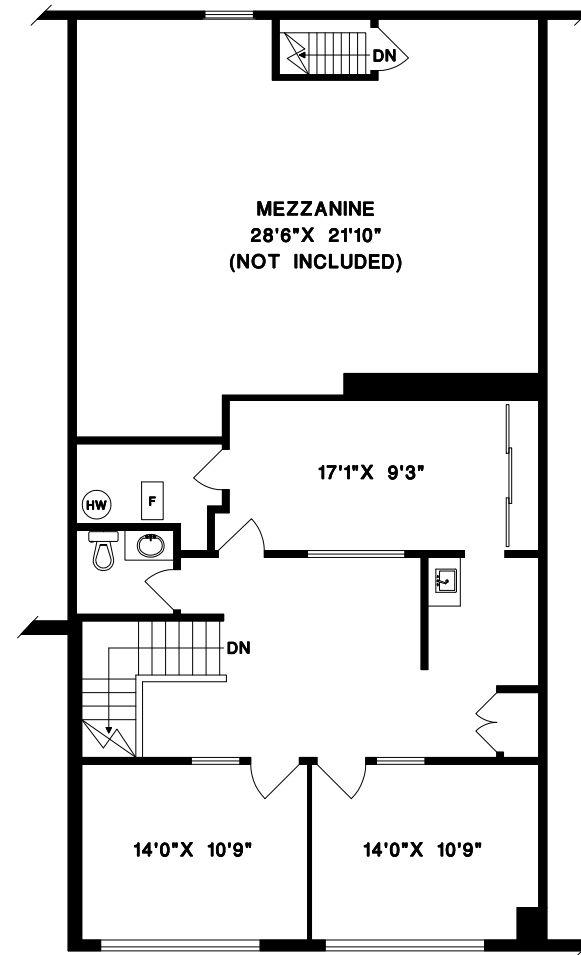
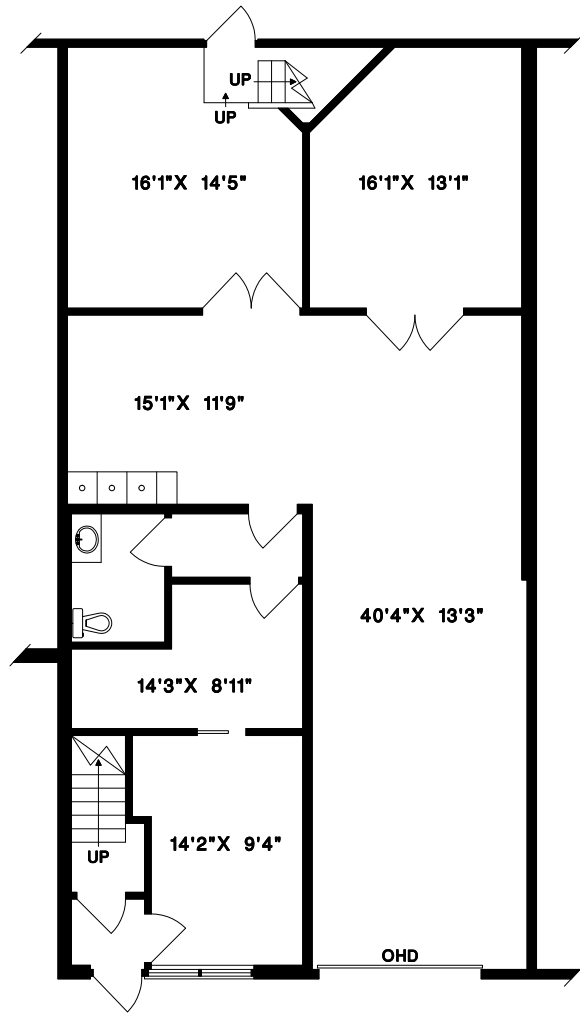


#110 - 8484 162ND STREET,
SURREY, B.C.



AREA CERTIFICATION: NOVEMBER 30, 2025

As evidenced by our signature and in accordance with the ANSI/BOMA Z65.2-2009 Industrial Buildings: Standard Methods of Measurement, we hereby certify the Occupied Area of this SUITE to be 2,671 Square Feet.

CRAIG W. NICHOLS
MEASURE MASTERS



1' 6'
SCALE

DRAWN BY: CN
DATE: NOVEMBER 2025
REVISED:

MEASURE MASTERS
SURVEY/WRITE ROOM
(604) 599-0285
surrey@measuremasters.ca

#110 - 8484 162ND STREET,
SURREY, B.C.

WAREHOUSE
OCA
1,225 SQ.FT.

OFFICE
OCA
455 SQ.FT.

UPPER OFFICE
OCA
991 SQ.FT.

AREA CERTIFICATION: NOVEMBER 30, 2025

As evidenced by our signature and in accordance with the
ANSI/BOMA Z65.2-2009 Industrial Buildings: Standard Methods of Measurement,
we hereby certify the Occupied Area of this SUITE to be 2,671 Square Feet.



CRAIG W. NICHOLS
MEASURE MASTERS

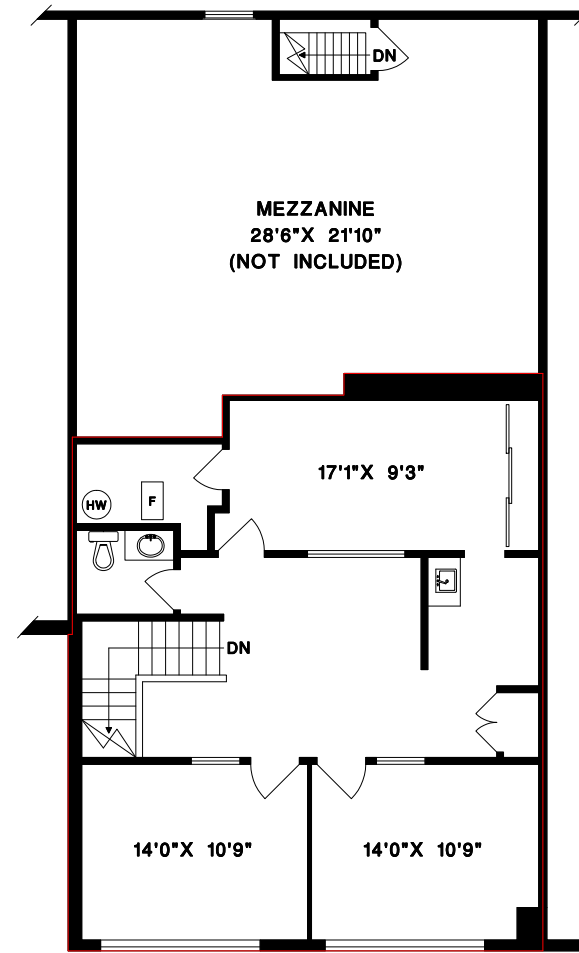
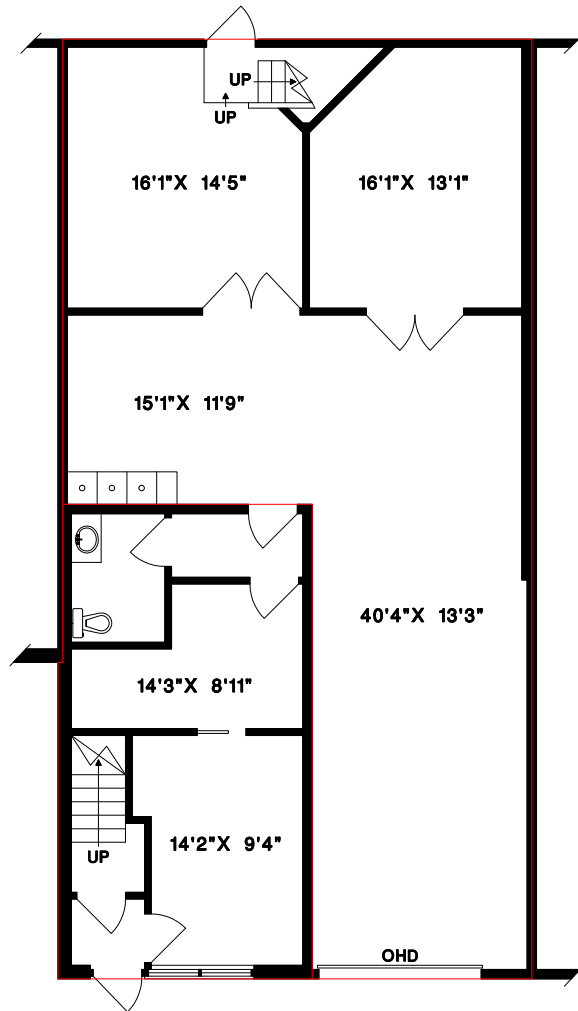


1' 6"
SCALE

DRAWN BY: CN
DATE: NOVEMBER 2025
REVISED:

 **MEASURE MASTERS**
SURVEY/WRITE ROOM
(604) 599-0285
surrey@measuremasters.ca

#110 - 8484 162ND STREET,
SURREY, B.C.



AREA CERTIFICATION: NOVEMBER 30, 2025

As evidenced by our signature and in accordance with the ANSI/BOMA Z65.2-2009 Industrial Buildings: Standard Methods of Measurement, we hereby certify the Occupied Area of this SUITE to be 2,671 Square Feet.


CRAIG W. NICHOLS
MEASURE MASTERS



1' 6'
SCALE

DRAWN BY: CN
DATE: NOVEMBER 2025
REVISED:

 **MEASURE MASTERS**
SURVEY/WRITE ROOM
(604) 599-0285
surrey@measuremasters.ca