

# For Lease

4909 17 Avenue SE | Calgary, AB



## Demographics *(within 3 km)*



NEIGHBORHOOD  
Forest Lawn



POPULATION  
72,500



MEDIAN AGE  
40



HOUSEHOLD INCOME  
\$78,398

## Building Details



PARKING  
Ample Surface  
Parking



YEAR BUILT  
2005



TRAFFIC COUNT

26,000 VPD | 17 Ave. & 47 St. SE  
34,000 VPD | 17 Ave. & 41 St. SE



Unit A210, 9705 Horton Road SW,  
Calgary, Alberta, T2V 2X5  
P (403) 214-2344

[blackstonecommercial.com](http://blackstonecommercial.com)

## Little Saigon Centre

### Property Details

**Size Available:** Building C, Unit 321 - 621 SF

**Availability:** Immediately

**Net Rate:** \$29.00 PSF

**Op Costs:** \$12.00 PSF (Est. 2026)

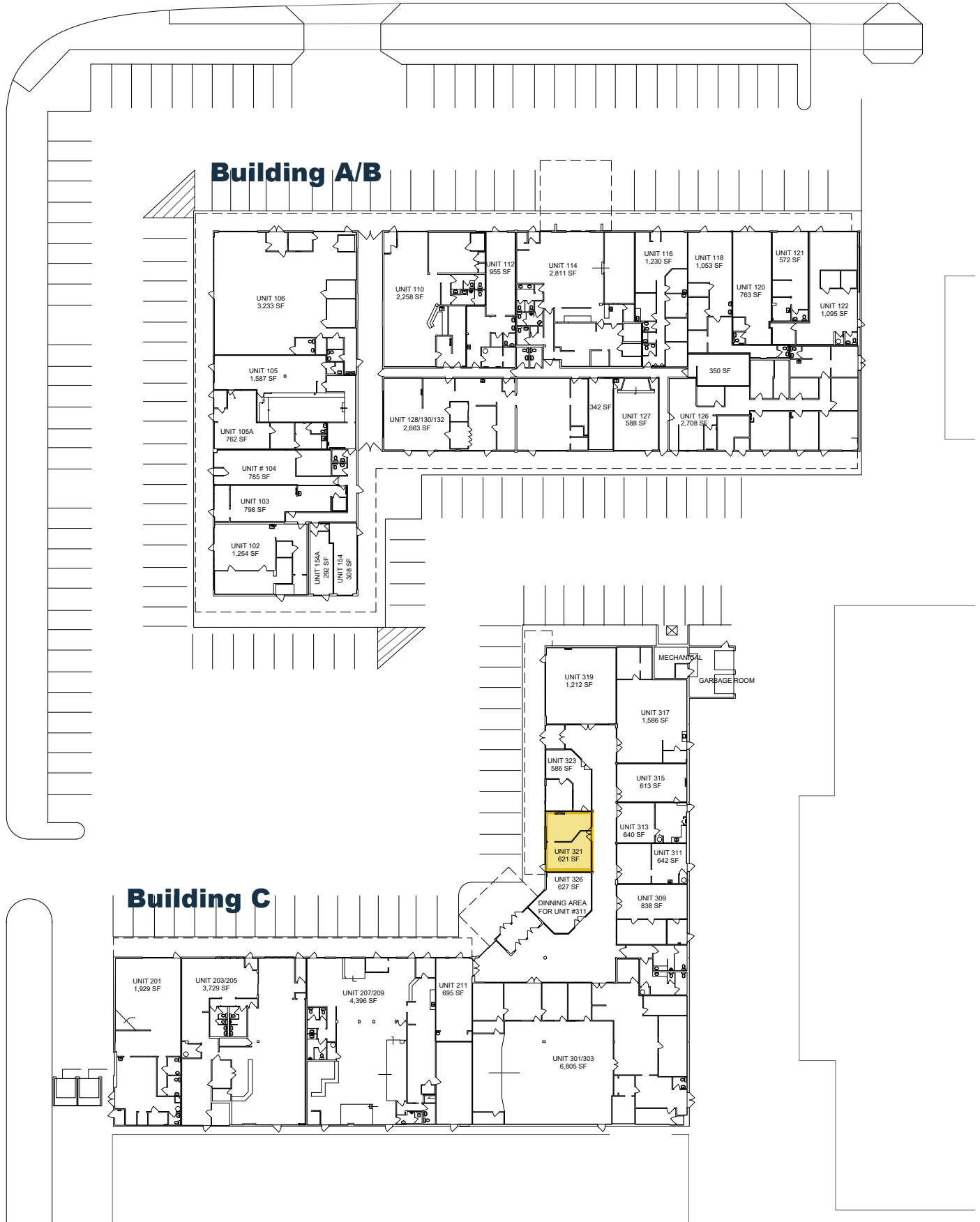
**Zoning:** C-COR2

### Highlights

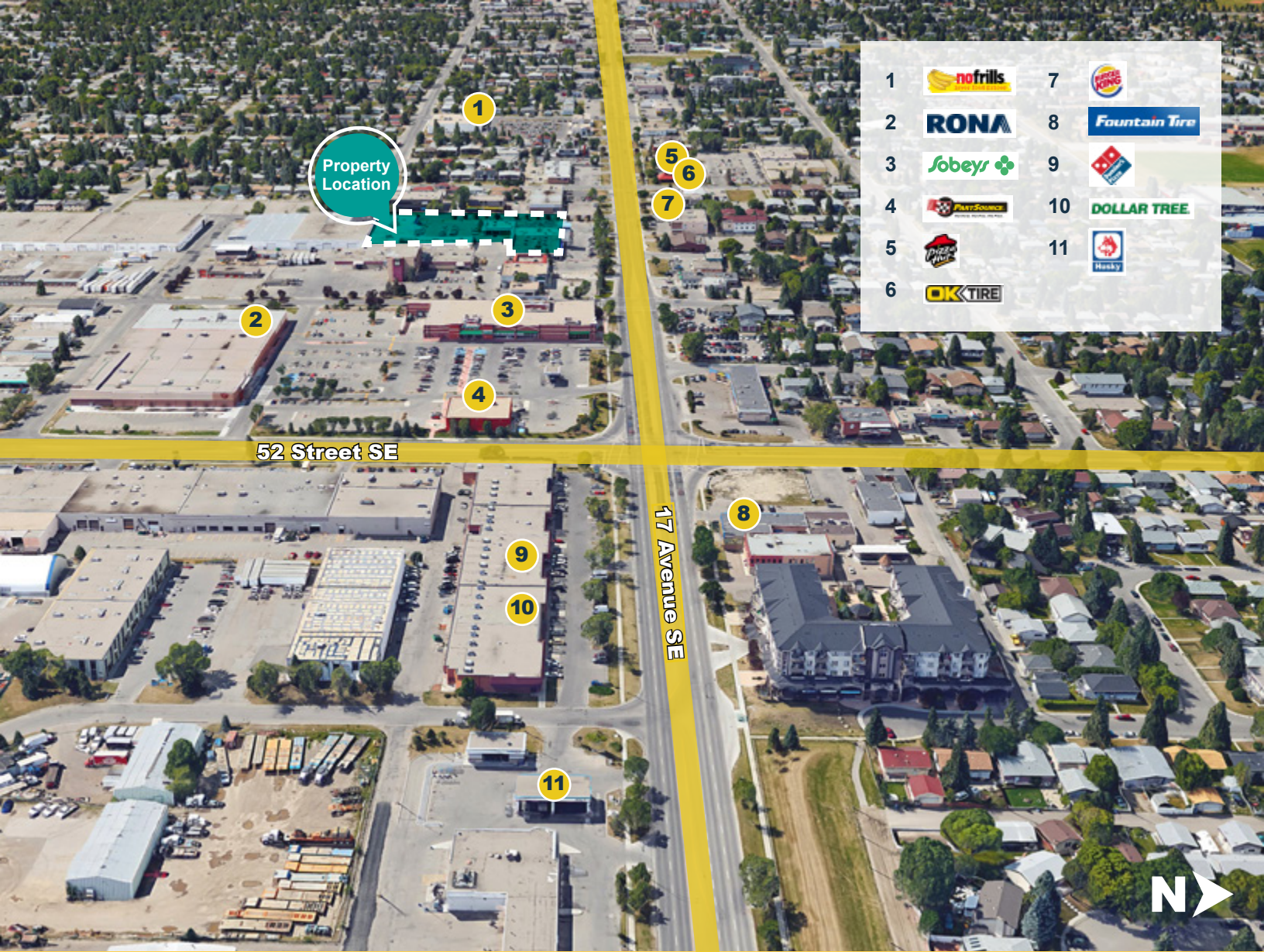
- High visibility with access to 17th Avenue SE
- Major east/west and north/south thoroughfares with high traffic volume of +/- 45,000 VPD (along 17th Ave SE)
- Improvements to 17th Avenue SE include the new Bus Rapid Transit (BRT), wider sidewalks, improved biking facilities, and new urban character elements

# Site Plan

17 Ave. SE / International Ave.







# Thank you for your interest!

For More Info.

**Mahmud Rahman**

P (403) 681-8830

E [mrahman@blackstonecommercial.com](mailto:mrahman@blackstonecommercial.com)

**Randy Wiens**

P (403) 519-5062

E [rwiens@blackstonecommercial.com](mailto:rwiens@blackstonecommercial.com)

Unit A210, 9705 Horton Road SW, Calgary, Alberta T2V 2X5 | P (403) 214-2344

This document has been prepared by Blackstone Commercial for advertising and general information only. Although information has been obtained from sources deemed reliable, Blackstone Commercial and / or their representatives, brokers or agents make no guarantees, representations or warranties of any kind, expressed or implied, regarding the information including, but not limited to, warranties of content, accuracy and reliability. Blackstone Commercial excludes unequivocally all inferred or implied terms, conditions and warranties arising out of this document and excludes all liability for loss and damages arising therefrom. © 2026, All rights reserved. This document is the copyrighted property of Blackstone Commercial.

[blackstonecommercial.com](http://blackstonecommercial.com)

**Blackstone**  
Commercial Real Estate Services Inc.