



RON WIEBE REALTIES INC.

COMMERCIAL REAL ESTATE AND BUSINESS BROKERAGE

2820-2894 BLVD ST-CHARLES, KIRKLAND



OFFICE SPACE FOR LEASE

Suite 201: 1,834 sf

\$24.00 / sf / year + GST/QST

Previously a chiropractor's office.
Ideal for healthcare or service-based businesses.

- Serviced by elevator
- Flexible for a variety of uses
- Near restaurants, pharmacy, gym
- Steps away from public transportation
- Ample parking
- Heat, electricity & AC included

ESPACE BUREAU À LOUER

Local 201: 1,834 pc

24.00\$ / pc / année + TPS/TVQ

*Anciennement occupé par un chiropraticien.
Idéal pour professionnels de la santé ou services.*

- *Desservi par ascenseur*
- *Aménagement flexible pour divers usages*
- *À proximité de restaurants, d'une pharmacie et d'un gym*
- *À quelques pas des transports en commun*
- *Stationnement abondant*
- *Chauffage, électricité et climatisation inclus*



RON WIEBE REALTIES INC.
LES IMMEUBLES RON WIEBE INC.

Commercial Real Estate Agency / Agence immobilière
7493 Trans-Canada, # 104
Montréal, QC
H4T 1T3

Blaine August

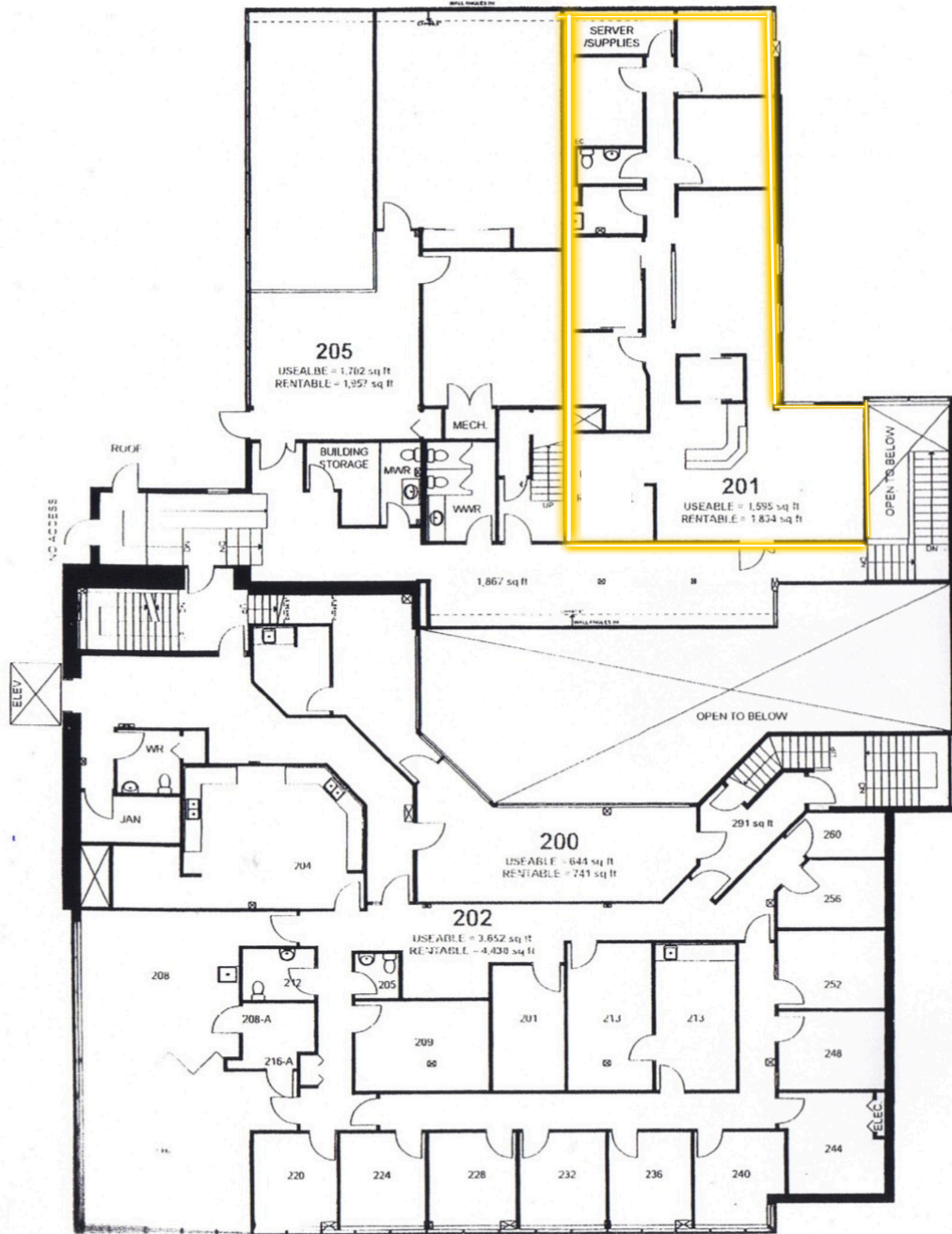
Real Estate Broker
Courtier immobilier
438-356-1416
blaine@rwrealties.com



RON WIEBE REALTIES INC.

COMMERCIAL REAL ESTATE AND BUSINESS BROKERAGE

2820-2894 BLVD ST-CHARLES, KIRKLAND



RON WIEBE REALTIES INC.
LES IMMEUBLES RON WIEBE INC.

Commercial Real Estate Agency / Agence immobilière
7493 Trans-Canada, # 104
Montréal, QC
H4T 1T3

Blaine August

Real Estate Broker
Courtier immobilier
438-356-1416
blaine@rwrealties.com