

# 1185 West Georgia Street

Vancouver, BC

**+/- 43,000 SF of Contiguous Space Available**  
**Four Full Floors Available of +/- 10,866 SF Each**

**Floors 3 & 4 now \$20.00 net psf!**



**ELI APPLEBAUM**  
PERSONAL REAL ESTATE CORPORATION  
VICE PRESIDENT  
eli.applebaum@cbre.com T 604.662.5164

**TARA FINNEGAN**  
PERSONAL REAL ESTATE CORPORATION  
SENIOR VICE PRESIDENT  
tara.finnegan@cbre.com T 604.662.5159

**ALLIED CBRE**

# Property Highlights

1185 West Georgia Street is located in the heart of Vancouver's city-centre, on the Northeast corner of West Georgia Street and Bute Street. This 16-storey office building is conveniently located 5 minutes walking distance from Burrard SkyTrain station and has close proximity to restaurants, hotels, services and shops on Alberni and Robson Streets. **New end of trip facilities and bike lockers completed by mid 2026.**

**Rent:** **3rd and 4th Floors - \$20.00 Net PSF**  
Contact Listing Agents for pricing on other available spaces

**Additional Rent:** \$23.61 PSF (2026 estimate)

**District:** Downtown Vancouver

<b>Area Available:</b>	Suite 300	10,871 SF	Available Immediately	Floors 3, 4, 5 & 6 Contiguous for 43,477 SF
	Suite 400	10,866 SF	Available Immediately	
	Suite 500*	10,869 SF	Available Immediately	
	<i>*Currently demised as 6,061 SF and 4,808 SF</i>			
	Suite 600	10,871 SF	Available Immediately	
	Suite 740	4,641 SF	Available Immediately (Move-in ready)	
	Suite 1045	2,293 SF	Available Immediately (Move-in ready)	
Suite 1700	10,983 SF	Available Immediately		

*\*All measurements are approximate and subject to remeasurement*

**Parking:** Underground Available - 1 stall per 1,500 SF leased  
\$225 per stall per month (Random)  
\$280 per stall per month (Reserved)

# Conceptualized Spaces at 1185 W Georgia

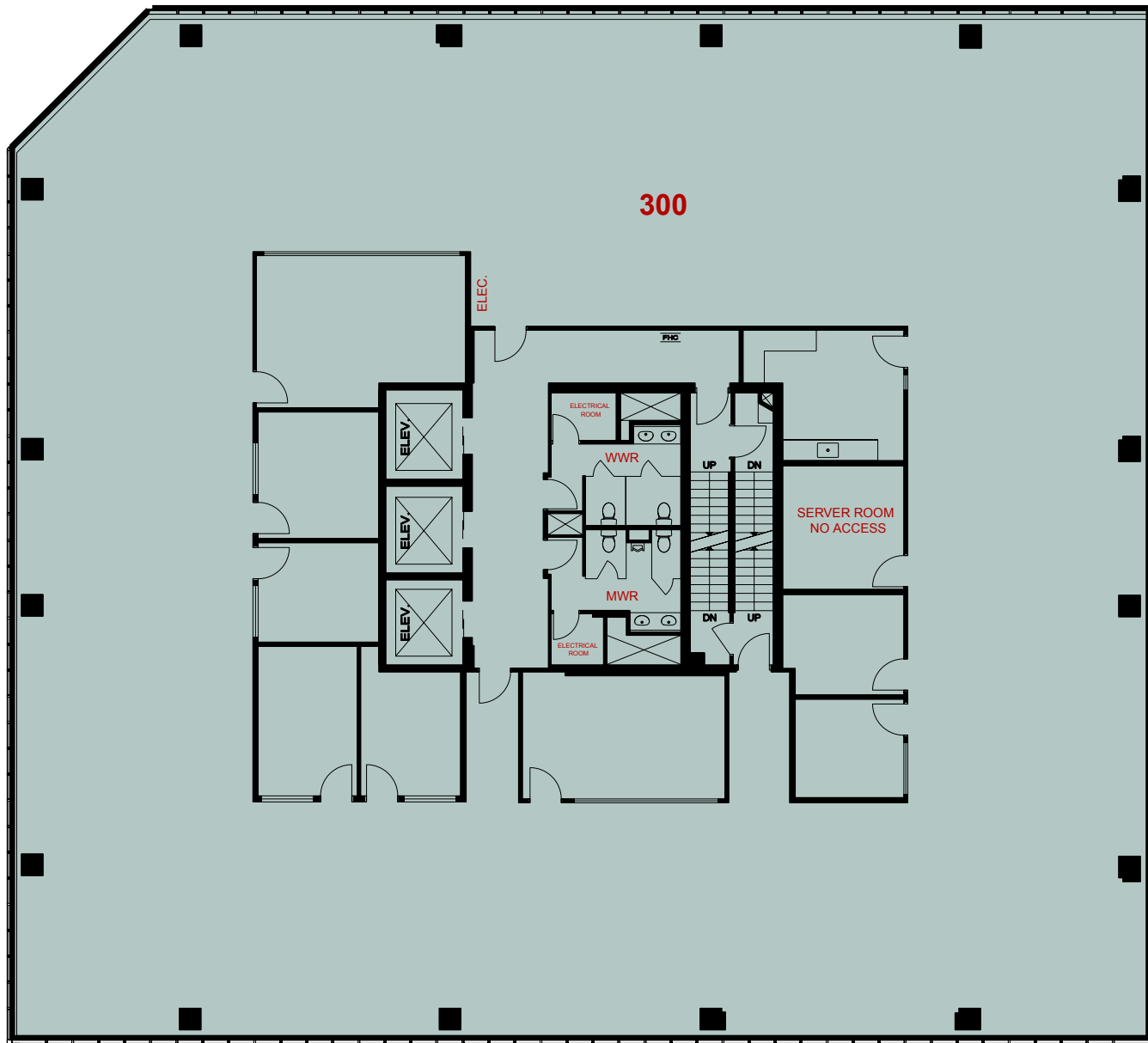


# Suite 300

Approx. 10,871 SF - Available Immediately

Full floor office suite of approximately 10,871 SF. Improved with 6 internal offices, 2 meeting rooms, kitchen and open area. Contiguous with Suites 400, 500 & 600 for approx. 43,477 SF.

Click for an interactive walk through of Suite 300



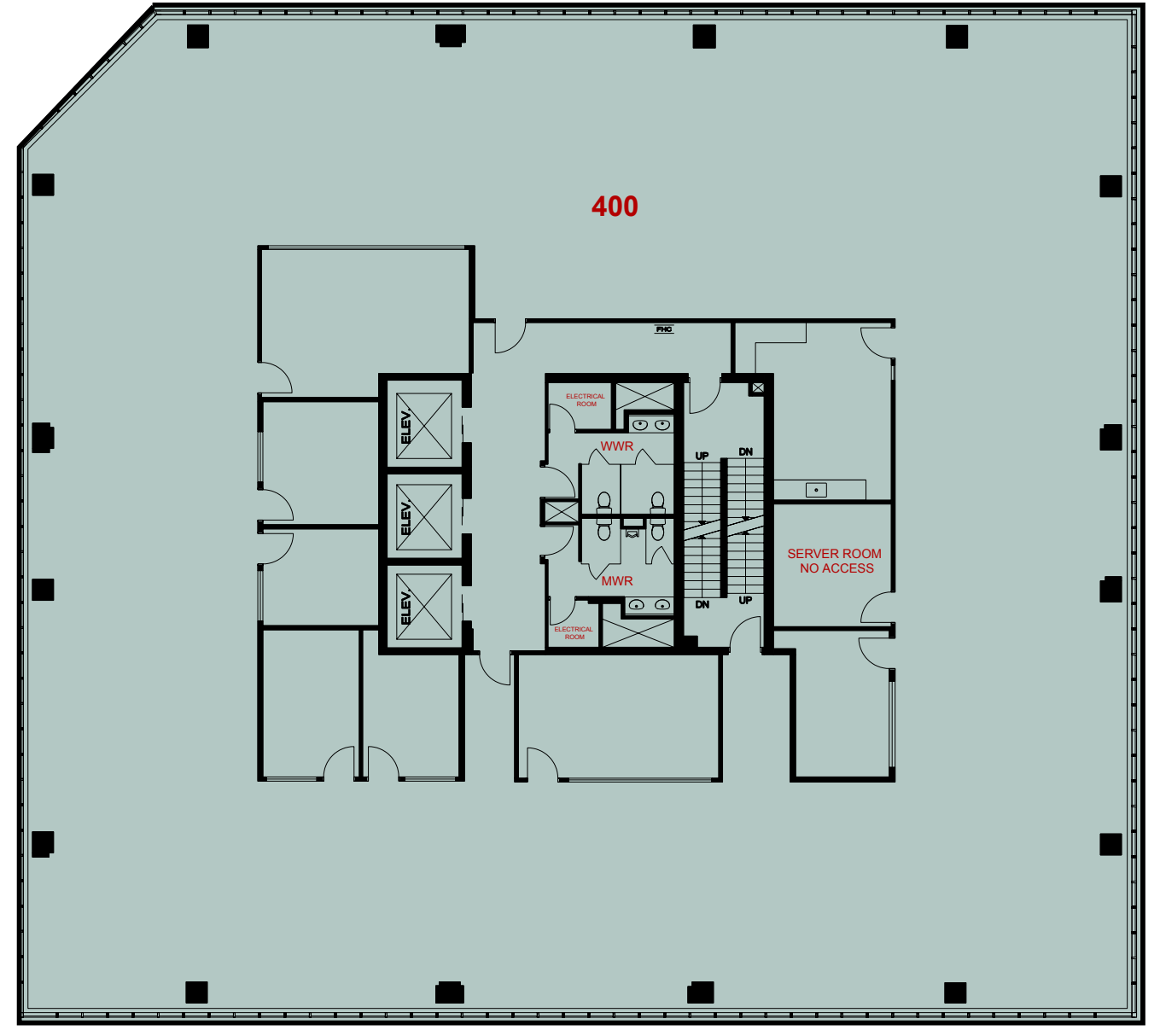
NOT TO SCALE

# Suite 400

Approx. 10,866 SF - Available Immediately

Full floor office suite of approximately 10,866 SF. Improved with 5 internal offices, 2 meeting rooms, kitchen and open area. Contiguous with Suites 300, 500 & 600 for approx. 43,477 SF.

Click for an interactive walk through of Suite 400



NOT TO SCALE

# Suite 500

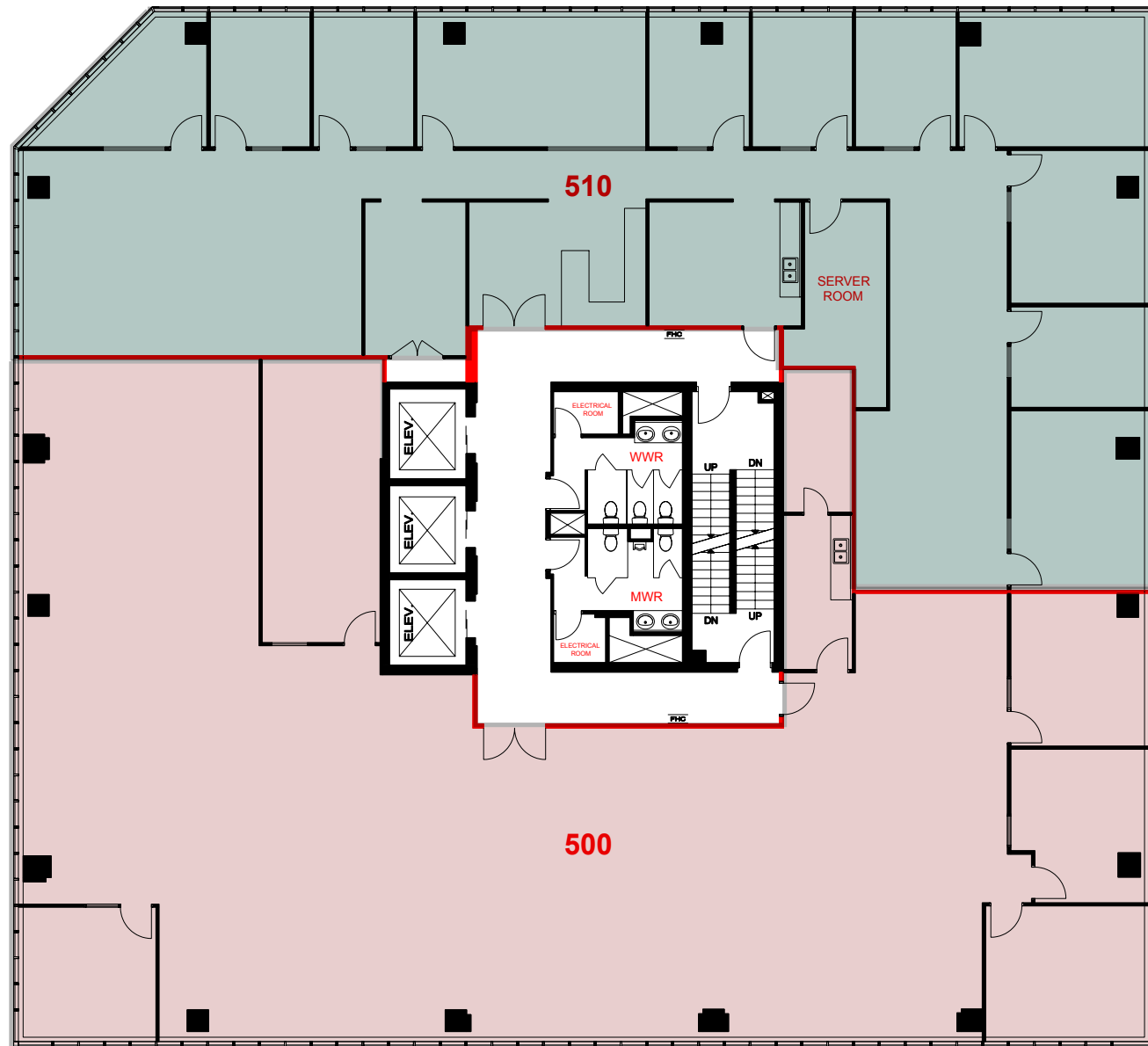
Full Floor of Approx. 10,869 SF

Currently demised to approx. 6,061 SF and approx. 4,808 SF

Available Immediately

- **Suite 500** - Fully improved office suite of approximately 6,061 SF. Improved with 4 external offices, a boardroom, kitchen and open area. Contiguous with Suites 300, 400, 510 & 600 for approx. 43,477 SF.
- **Suite 510** - Fully improved office suite of approximately 4,808 SF. Improved with 10 external offices, a boardroom, kitchen and open area. Contiguous with Suites 300, 400, 500 & 600 for approx. 43,477 SF.

Click for an interactive walk through of Suite 500 & 510



NOT TO SCALE

# Suite 500 - Photo Gallery



Suite 500



Suite 500



Suite 510



Suite 510



Suite 510



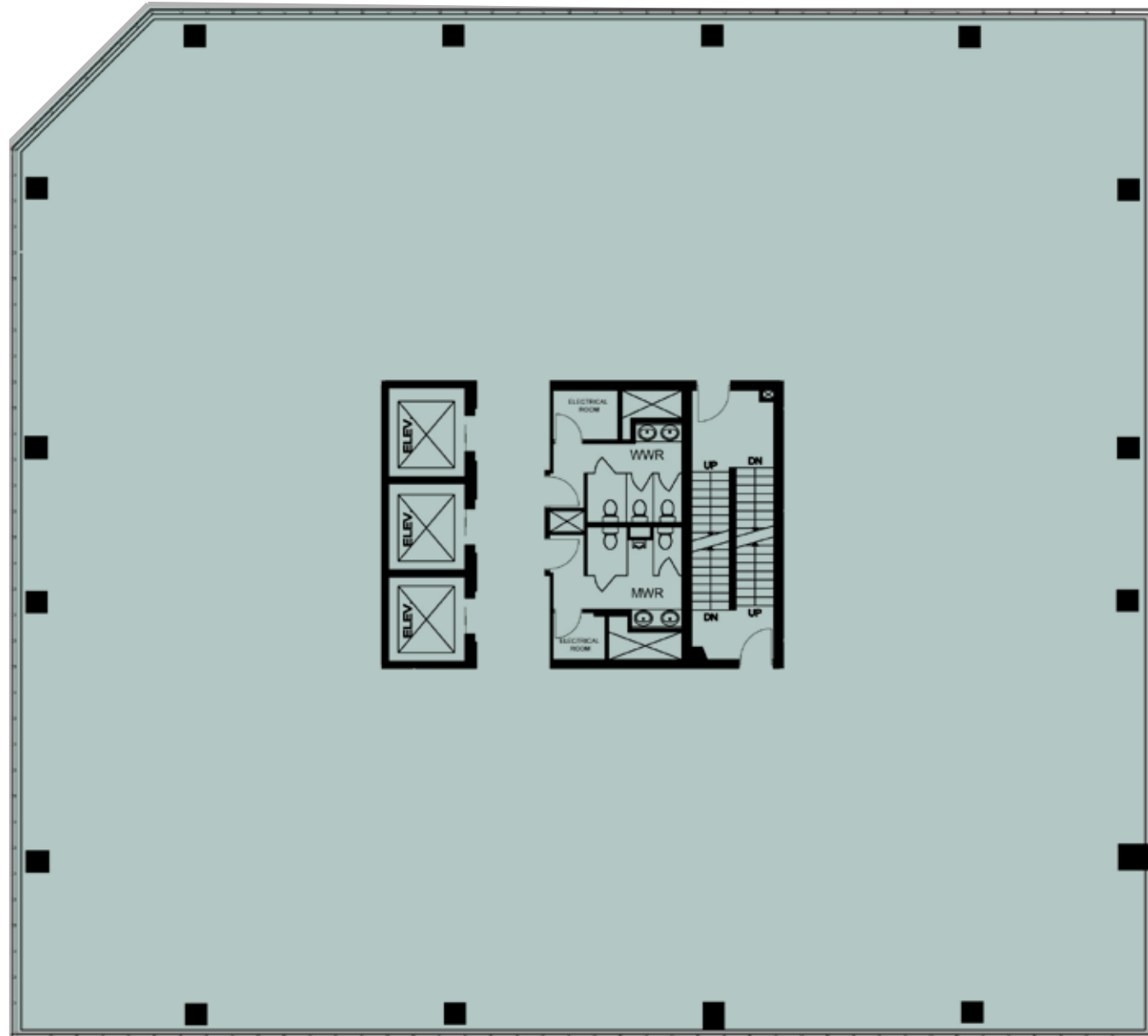
Suite 510

# Suite 600

Approx. 10,871 SF - Available Immediately

Full floor office suite of approximately 10,871 SF to be provided in a warm shell condition with open plan layout, exposed ceilings and LED lights. Can be demised to approx. 2,500 SF or contiguous with Suites 300, 400, 500 & 600 for approx. 43,477 SF.

Click for conceptualized demise test-fit option



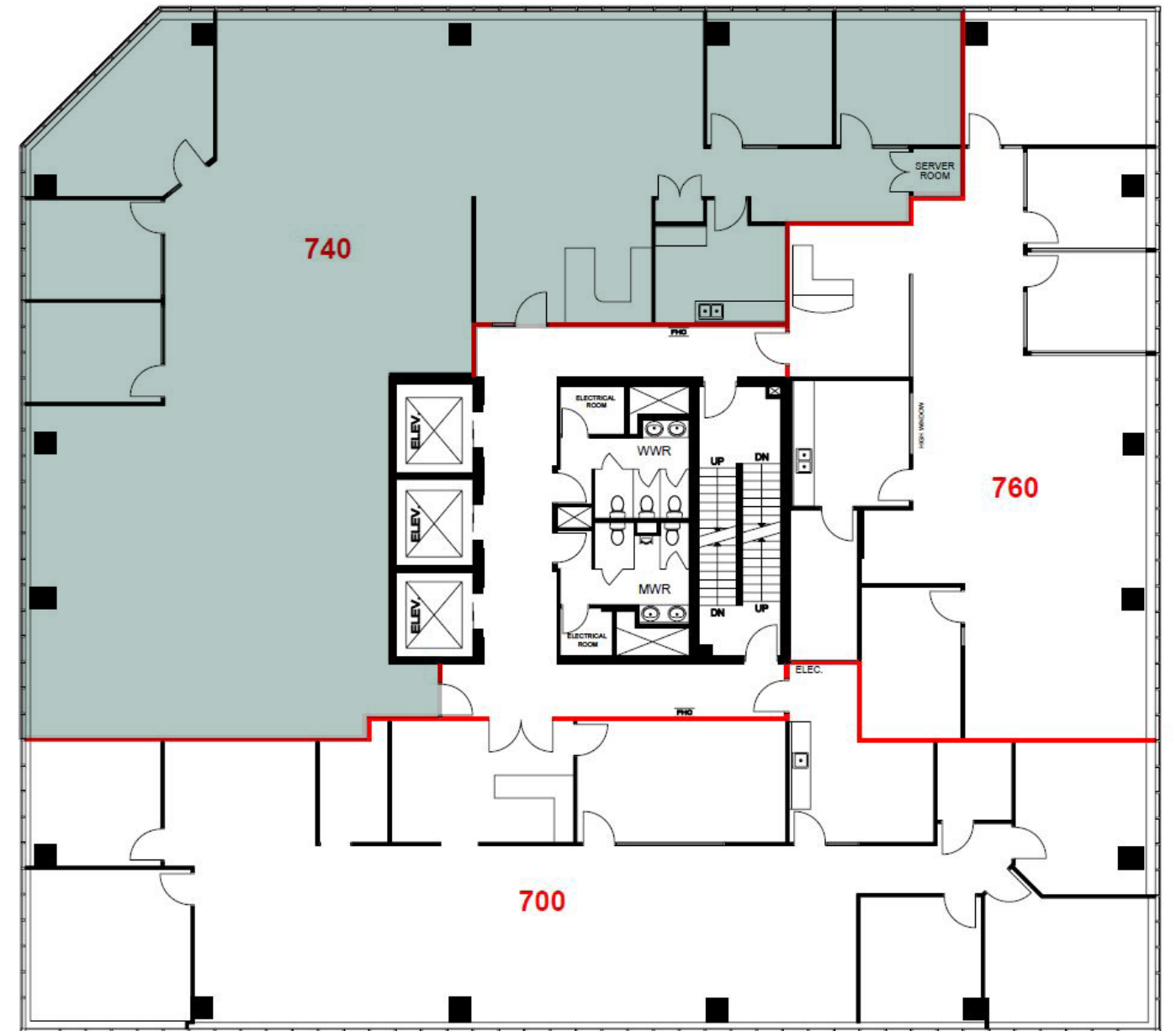
NOT TO SCALE

# Suite 740

Approx. 4,641 SF - Available Immediately - Move-In Ready

Fully improved office suite of approximately 4,641 SF. Improved with 4 window offices, 1 boardroom, kitchen, reception, server room and open plan. The floor to ceiling window line allows for plenty of natural light, and some partial mountain views.

Click for an interactive walk through of Suite 740



NOT TO SCALE

# Suite 740 - Photo Gallery

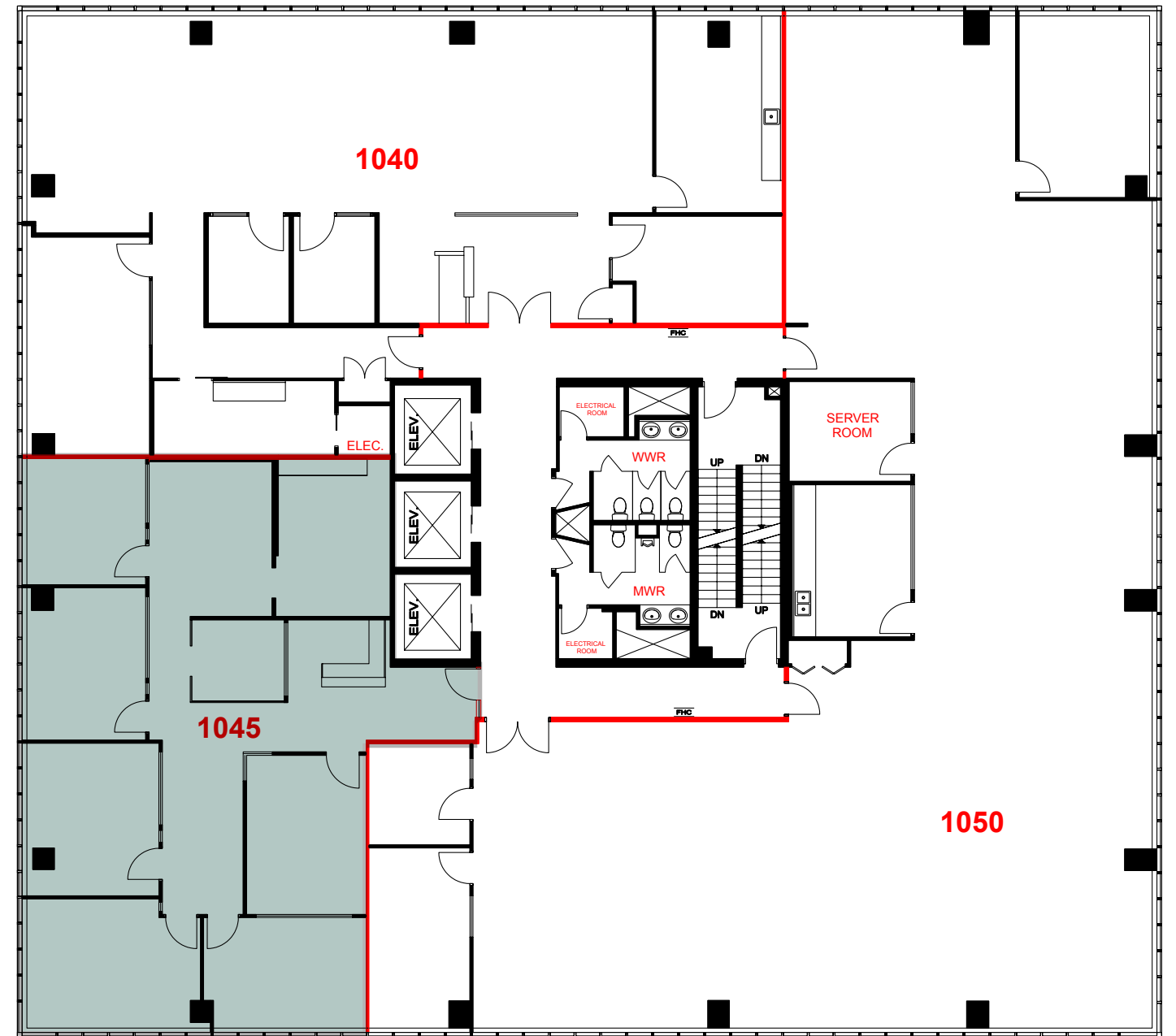


# Suite 1045

Approx. 2,293 SF - Immediately - Move-In Ready

Fully improved office suite of approximately 2,293 SF. Improved with 5 window offices, 1 interior boardroom, kitchen, reception, server room and open plan. The floor to ceiling window line allows for plenty of natural light.

Click for an interactive walk through of Suite 1045



NOT TO SCALE

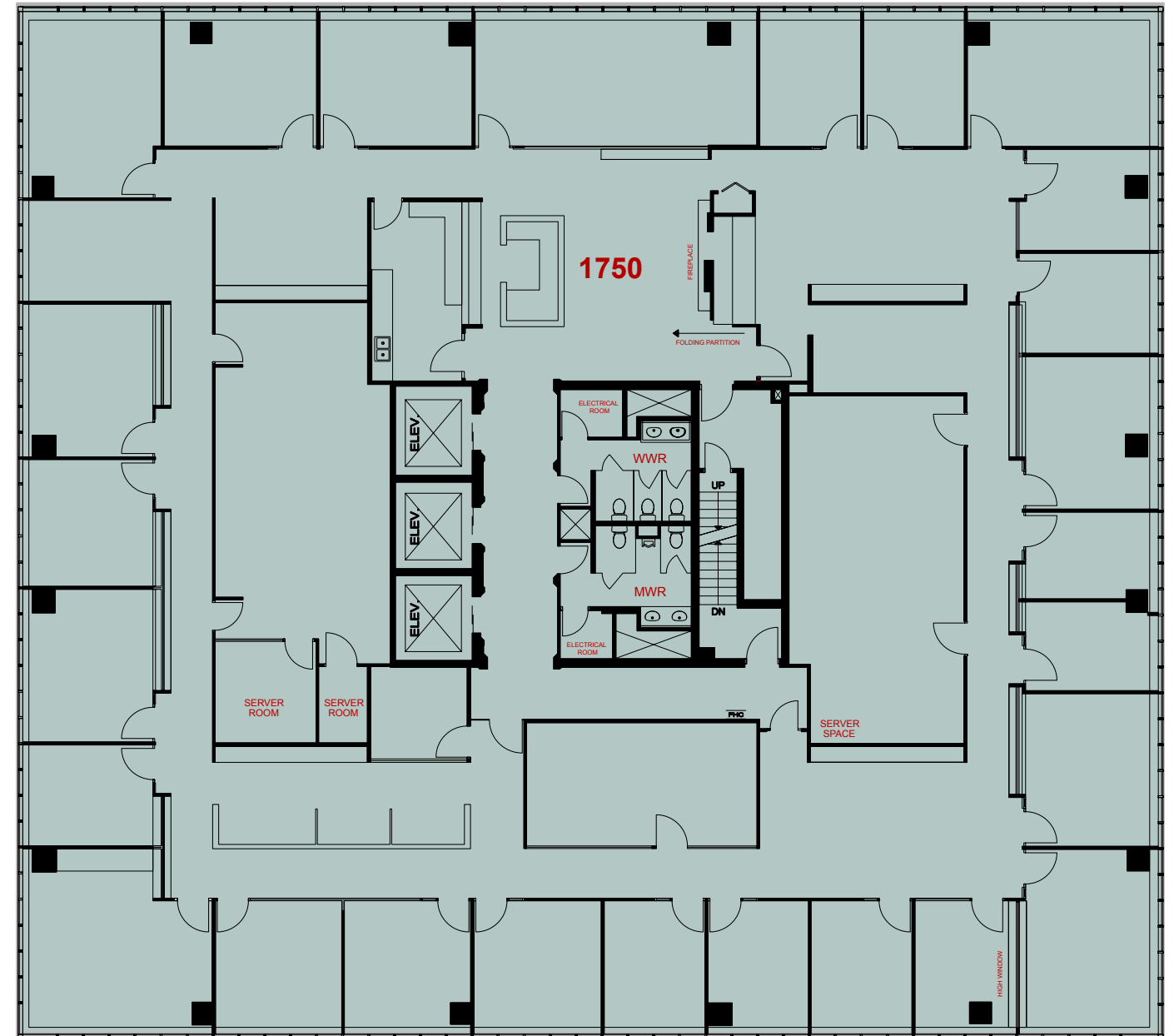
# Suite 1045 - Photo Gallery



# Suite 1700

Approx. 10,983 SF - Available Immediately

Full floor office suite of approximately 10,983 SF currently built out with 25 perimeter offices, 1 boardroom and reception area and kitchen. Landlord will provide upgrades to the unit.



NOT TO SCALE

# Local Amenities



## 1185 WEST GEORGIA STREET

### RESTAURANT & CAFES

1. Blenz
2. Waves Coffee House
3. Starbucks
4. Urban Tea Merchant
5. Victoria Chinese Restaurant
6. Earl's
7. SMAK
8. JJ Bean
9. Joe Fortes
10. The Keg Steakhouse + Bar
11. Ramen Danbo
12. Tim Hortons
13. Tableau
14. Freshii
15. TurF

### RETAIL & SERVICES

1. Urban Fare
2. IGA
3. IGA
4. Vancouver Public Library
5. Coal Harbour Liquor Store
6. BC Liquor
7. Shoppers Drug Mart

### HOTELS

1. Hyatt Regency Vancouver
2. Days Inn by Wyndham
3. Fairmont Pacific Rim
4. Pan Pacific Vancouver
5. Shangri-La Vancouver
6. Fairmont Hotel Vancouver
7. Loden Hotel

### GYMS

1. Elite Performance Fitness
2. YWCA Health + Fitness Centre
3. Contenders Boxing
4. Fitness World
5. Equinox West Georgia Street
6. Barry's Vancouver

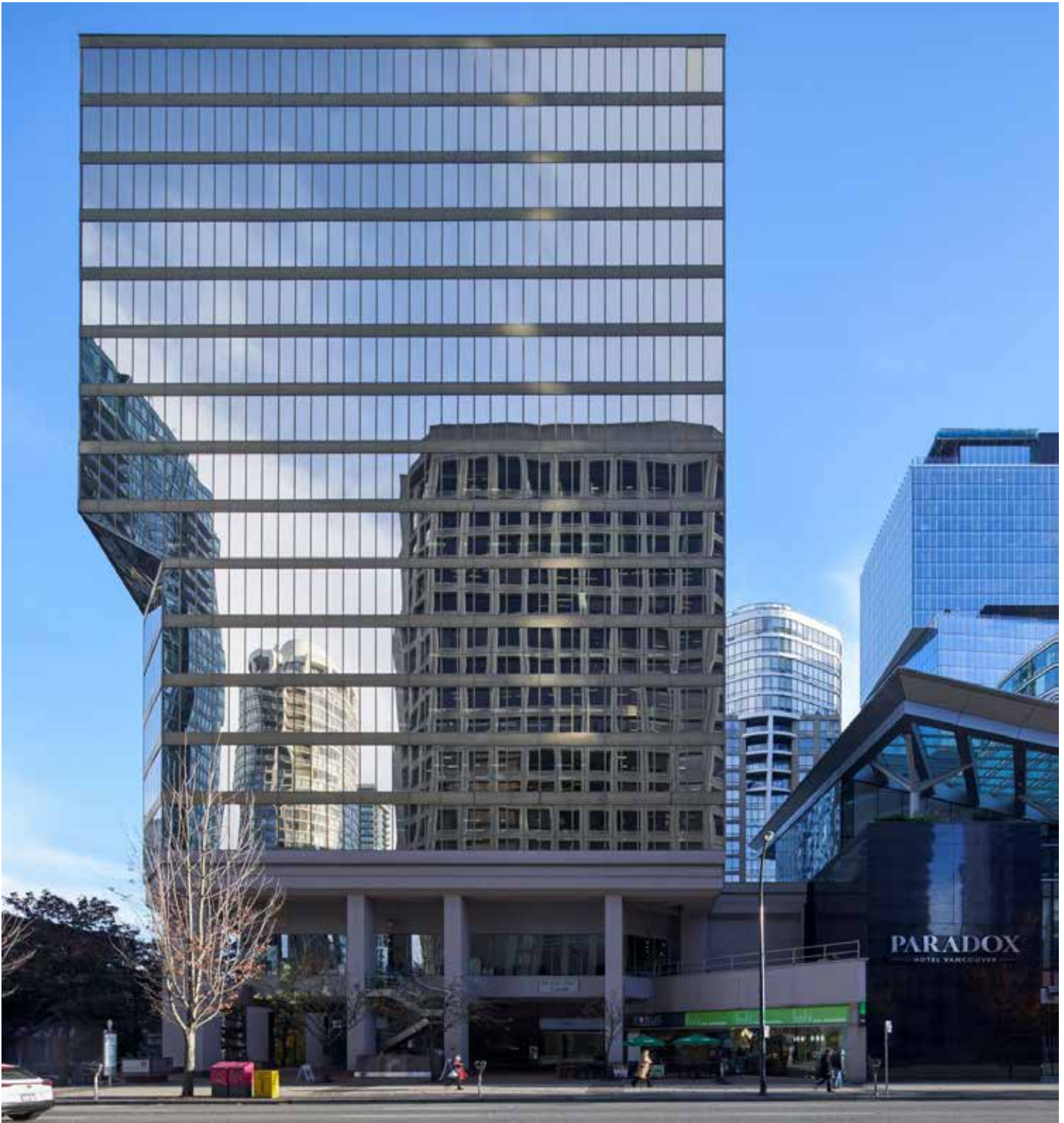
### PARKS

1. Art Phillips Park
2. Portal Park
3. Harbour Green Park
4. Coal Harbour Park
5. Cardaro Park
6. Barclay Heritage Square Park
7. Nelson Park
8. Marina Square Park

# Central Business District

The Central Business District (CBD) of Vancouver is predominantly a high rise office commercial area with the backdrop of the North Shore mountains and Burrard Inlet water highlights. This area is amenity rich, offering an abundant of luxury hotels, top rated restaurants and bars, shops and entertainment facilities. Mixed in with residences, this area attracts numerous federal and non-governmental organization offices, consulates, national and international bank headquarters, accounting, law firms and international hotels. With walking distance to all major SkyTrain and Bus Loops (including Burrard and Waterfront stations), access is seamless into and out of the city. Together with the abundance of parks that are sprinkled throughout the city and the proximity to Vancouver's Seawall and Stanley Park, this area is the perfect place to work, rest and play.





**CBRE LIMITED**

1021 West Hastings Street  
Suite 2500  
Vancouver, BC V6E 0C3

**ELI APPLEBAUM**

PERSONAL REAL ESTATE CORPORATION  
VICE PRESIDENT, OFFICE PROPERTIES  
[eli.applebaum@cbre.com](mailto:eli.applebaum@cbre.com) T 604.662.5164

**TARA FINNEGAN**

PERSONAL REAL ESTATE CORPORATION  
SENIOR VICE PRESIDENT, OFFICE PROPERTIES  
[tara.finnegan@cbre.com](mailto:tara.finnegan@cbre.com) T 604.662.5159

**CBRE ALLIED**

This disclaimer shall apply to CBRE Limited, Real Estate Brokerage, and to all other divisions of the Corporation; to include all employees and independent contractors ("CBRE"). The information set out herein, including, without limitation, any projections, images, opinions, assumptions and estimates obtained from third parties (the "Information") has not been verified by CBRE, and CBRE does not represent, warrant or guarantee the accuracy, correctness and completeness of the Information. CBRE does not accept or assume any responsibility or liability, direct or consequential, for the Information or the recipient's reliance upon the Information. The recipient of the Information should take such steps as the recipient may deem necessary to verify the Information prior to placing any reliance upon the Information. The Information may change and any property described in the Information may be withdrawn from the market at any time without notice or obligation to the recipient from CBRE. CBRE and the CBRE logo are the service marks of CBRE Limited and/or its affiliated or related companies in other countries. All other marks displayed on this document are the property of their respective owners. All Rights Reserved. Mapping Sources: Canadian Mapping Services [canadamapping@cbre.com](mailto:canadamapping@cbre.com); DMTI Spatial, Environics Analytics, Microsoft Bing, Google Earth.