

4,050 & SF
3,089 SF



2nd Floor - 7436 Fraser Park Drive Burnaby, BC

Highlights

Opportunity to lease 4,050 SF + 3,089 SF of second floor office space in the growing Big Bend neighbourhood of Burnaby. Just four minutes to Marine Way, the location offers easy access to Burnaby, Vancouver & New Westminister and also links to the Queensborough Bridge. There is a direct bus route to Edmonds SkyTrain Station via #116 from Byrne Road and North Fraser Way. The Fraser Foreshore Park provides a riverfront trail and exercise area across the street.

Brian Mackenzie

Vice President, Leasing & Sales
604 691 6618
bmackenzie@naicommercial.ca

NAI Commercial
1075 W Georgia St, Suite 1300
Vancouver, BC V6E 3C9
+1 604 683 7535
naicommercial.ca

7436 Fraser Park Drive

Burnaby, BC

Amenities

Burnaby Fraser Foreshore Park

Immediately across the street from 7436 Fraser Park Drive, this picturesque riverside park provides a wonderful opportunity to experience and explore the mighty Fraser River. The shoreline trail is perfect for a jog, walk or leisurely stroll. Log benches dot the pathway, so you can rest and enjoy a view of the marine traffic on this busy waterway while having lunch.

Riverway Golf Course

This classic 18-hole championship golf course is one of the premier layouts in the area. It's imaginatively designed, link-style fairways are lined by sweeping mounds of wild fescue. And an array of white tan bunkers and water hazards are strategically placed to make every shot exciting. Located minutes from 7434 Fraser Park Drive.



Property Details

Approx. Size

4,050 SF &
3,089 SF on the 2nd floor

Net Rent

\$15.00/SF

Operating Costs & Property Taxes

\$14.41/SF including utilities (2026)

Features

- ▶ Corner unit with river views
- ▶ Brand new rooftop HVAC units throughout
- ▶ Free parking plus ample street parking (14)
- ▶ Park and river front trail across the street
- ▶ Skylights
- ▶ Signage available
- ▶ Elevator access

Availability

Immediate



BURNABY FRASER FORESHORE PARK



RIVERWAY GOLF COURSE

Floor Plan

7434 - Unit 210 | 4,050 SF

Efficient office unit facing West

Open Plan

Kitchen

1 meeting room

4 offices

7438 | 3,089 SF (2nd Floor)

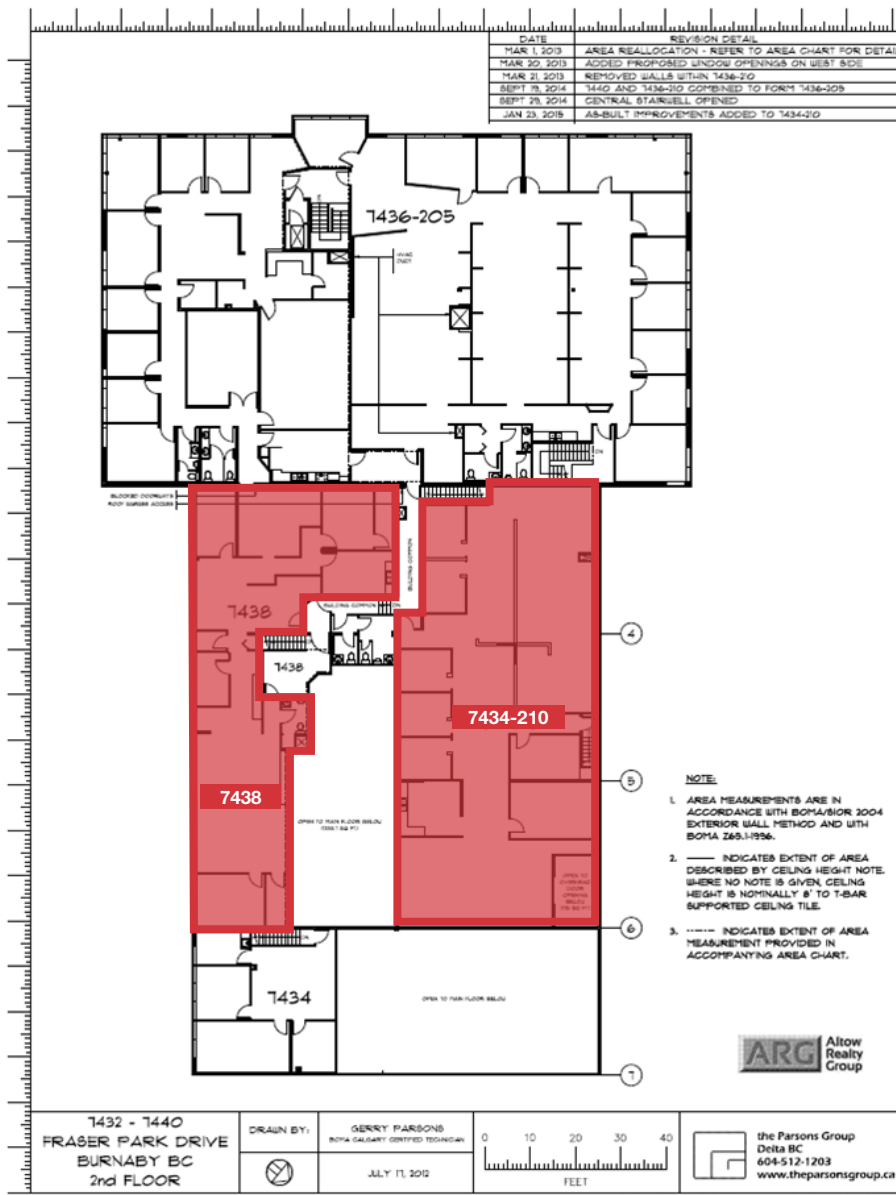
Efficient office unit facing East

Open plan

Kitchen

1 meeting room

6 offices







7436
FRASER PARK

- MARINE WAY MARKET**
- Cactus Club Cafe
 - McDonald's
 - Tim Hortons
 - Starbucks
 - London Drugs
 - Mark's
 - Canadian Tire
 - Save-On-Foods
 - Pokerrito
 - Vancity
 - TD Canada Trust
 - Mucho Burrito
 - White Spot
 - Little Minh's Kitchen

Brian Mackenzie
 Vice President, Leasing & Sales
 604 691 6618
 bmackenzie@naicommercial.ca



NAI Commercial
 1075 W Georgia St, Suite 1300
 Vancouver, BC V6E 3C9
 +1 604 683 7535
naicommercial.ca

No warranty or representation, express or implied, is made as to the accuracy of the information contained herein, and the same is submitted subject to errors, omissions, change of price, rental or other conditions, prior sale, lease or financing, or withdrawal without notice, and of any special listing conditions imposed by our principals no warranties or representations are made as to the condition of the property or any hazards contained therein are any to be implied. Aerial image(s) courtesy of Google, Landsat/Copernicus and BurnabyMap.