



FOR LEASE

10405 Jasper Avenue

10405 Jasper Avenue
Edmonton, AB T5J 3P0

Honeywell

Office Space For Lease
780.428.7850

← Heritage Trail
Promenade

For Lease

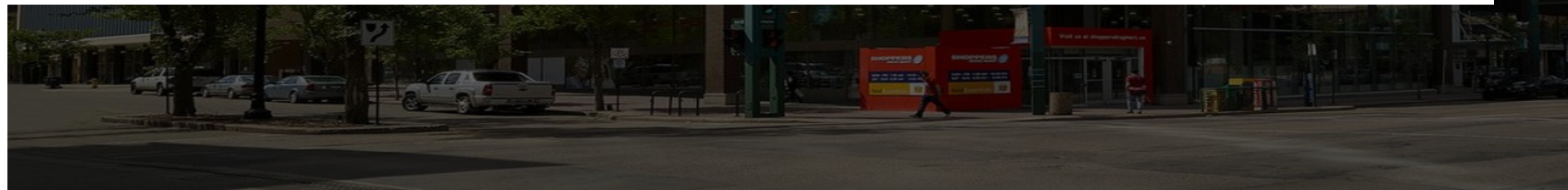
Nestled in downtown Edmonton, 10405 Jasper Avenue offers seamless connectivity to all aspects of the city through its proximity to the pedway and LRT. The esteemed roster of tenants enjoy a plethora of advantages, including access to a conference centre and a well-equipped fitness facility with showers and lockers, all provided at no extra cost. Additionally, 10405 Jasper Avenue presents enticing opportunities for office and retail spaces on the main floor, granting direct access to the bustling Jasper Avenue.

Offering summary

Asking rate	\$16.00 - 1\$8.00 psf
Additional rent	\$16.61 psf (2024)
Parking ratio	1 stall per 1,400 sf leased
Parking rates	Tandem \$210 Unreserved \$280 Reserved \$340

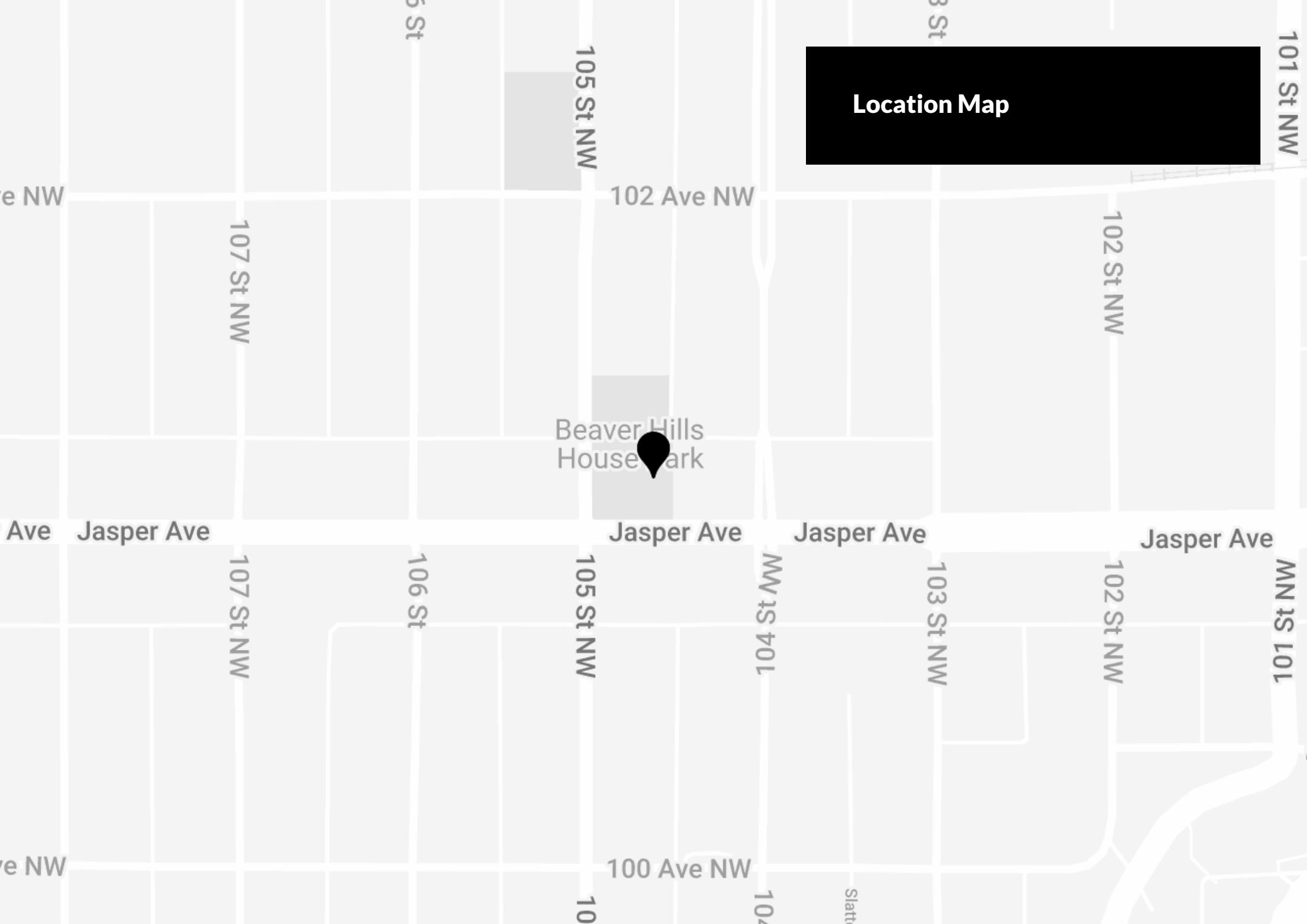
Connected to all facets of downtown Edmonton via nearby pedway and LRT

- Tenants will benefit from the conference centre and on-site fitness facility with showers and lockers, available at no additional charge
- Main floor office and retail opportunities available with direct access to Jasper Avenue

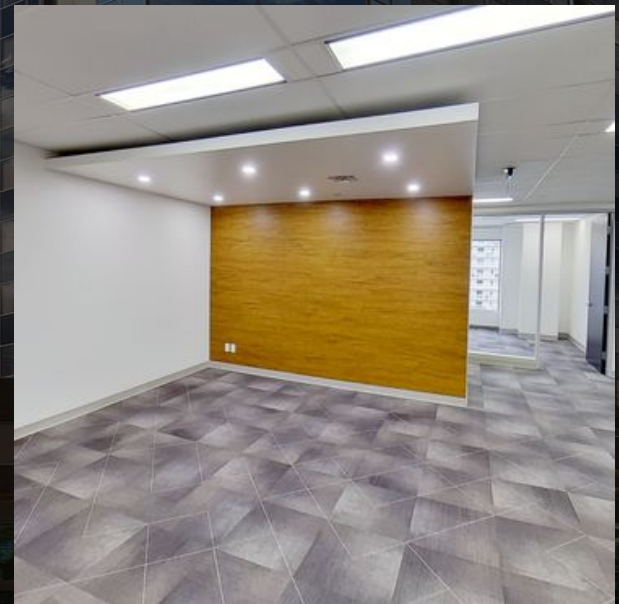
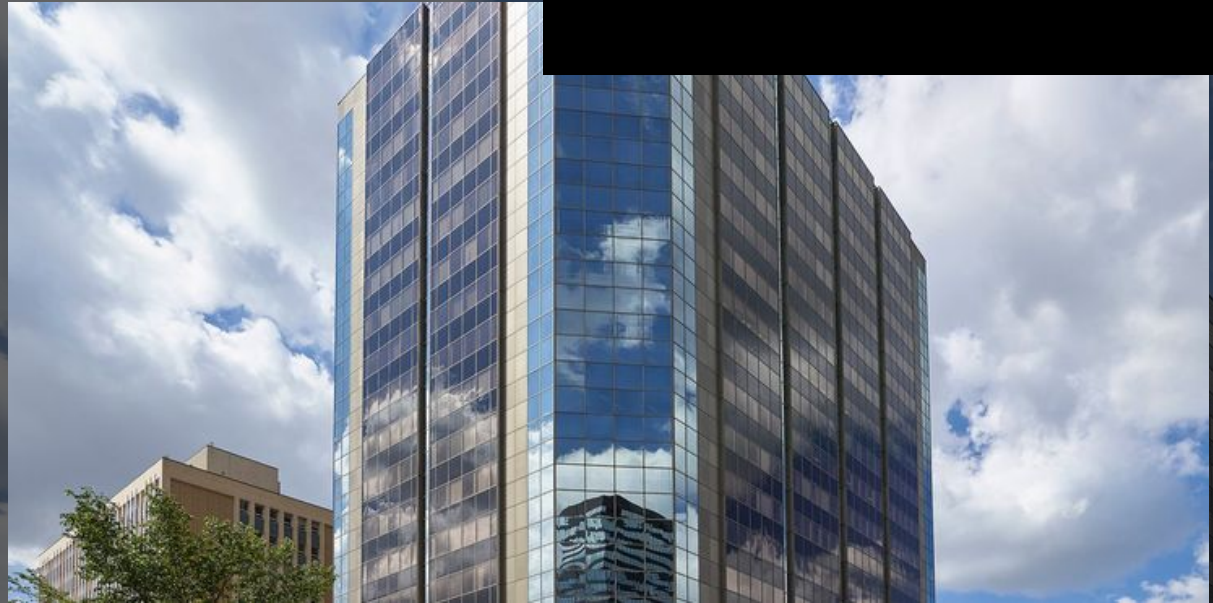


Location Map

Beaver Hills
House Park



Gallery



Availabilities

Main floor - Suite 02

1,420sqft

Main floor - Suite 03

2,045sqft

Main floor - Suite 04

1,229sqft

Main floor - Suite 09/10

1,885sqft

Main floor - Suite 11

680sqft

MZ105

8,262sqft

MZ120

3,774sqft

Suite 210B

2,680sqft

Suite 220

3,060sqft

Suite 230

2,851sqft

Suite 245

2,047sqft

Suite 280

1,884sqft



Team



Cory Wosnack

Principal & Managing Director
cory.wosnack@avisonyoung.com
+1 780 909 7850