

FOR SALE

±1,328 Sq. Ft.

PRICE REDUCED!

LIZOTTE

AND ASSOCIATES REAL ESTATE INC



10020 Jasper Avenue, Edmonton, AB

CAMBRIDGE LOFTS COMMERCIAL CONDO

Property Highlights

- Titled underground parking includes 2 oversized stalls + 1 standard
- 200+ rental Condos within the building
- Close to key business districts, restaurants, cafes, and entertainment venues
- Located steps from Central LRT Station and key bus routes
- Currently built out as a chiropractic clinic
- ±429 Sq. Ft. Bonus mezzanine



780.488.0888



www.lizotterealestate.com



#1200, 10117 Jasper Avenue
Edmonton, AB T5J 1W8

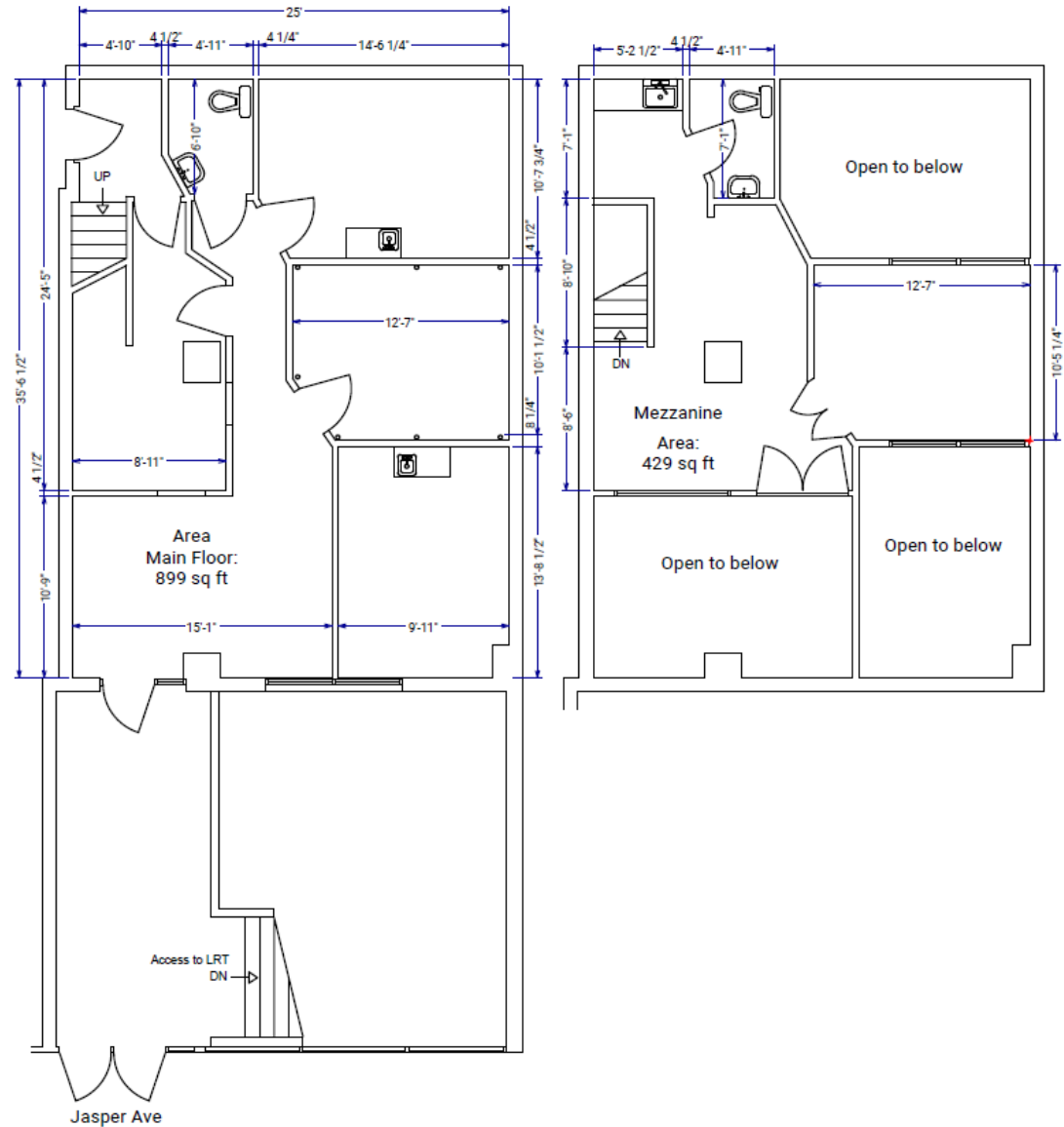
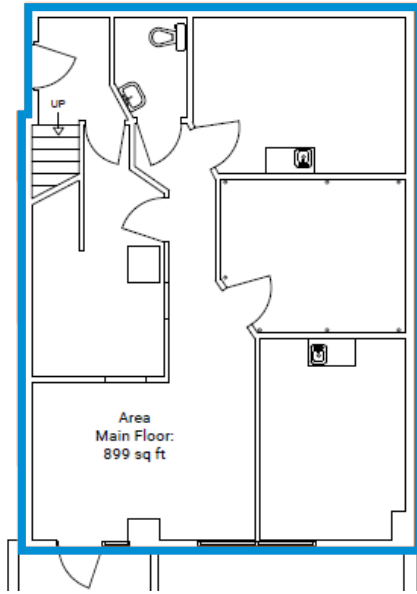


No warranty or representation, expressed or implied, is made as to the accuracy of the information contained herein, and same is submitted subject to errors, omissions, change of price, rental or other conditions, withdrawal without notice, and to any specific listing condition, imposed by our principals.

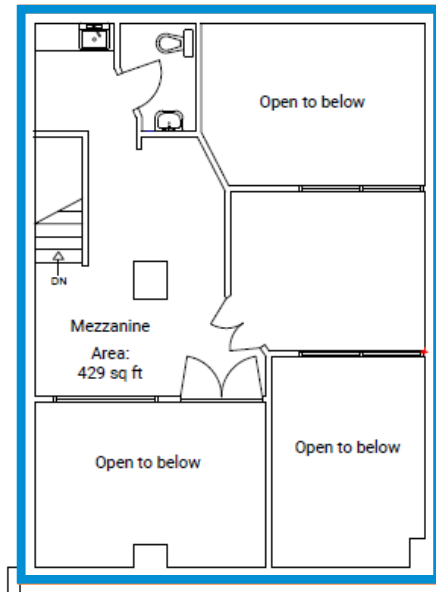
FOR SALE

Main Floor Cambridge Commercial Condo

MAIN FLOOR 899 SF



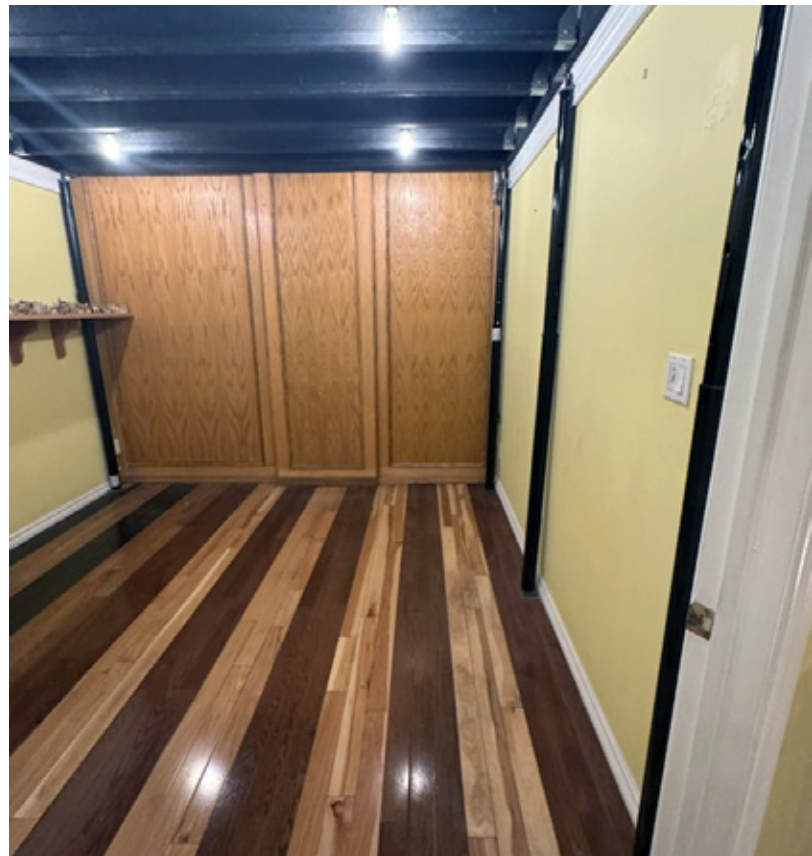
MEZZANINE 429 SF *BONUS SPACE*



FOR SALE

Main Floor Cambridge Commercial Condo

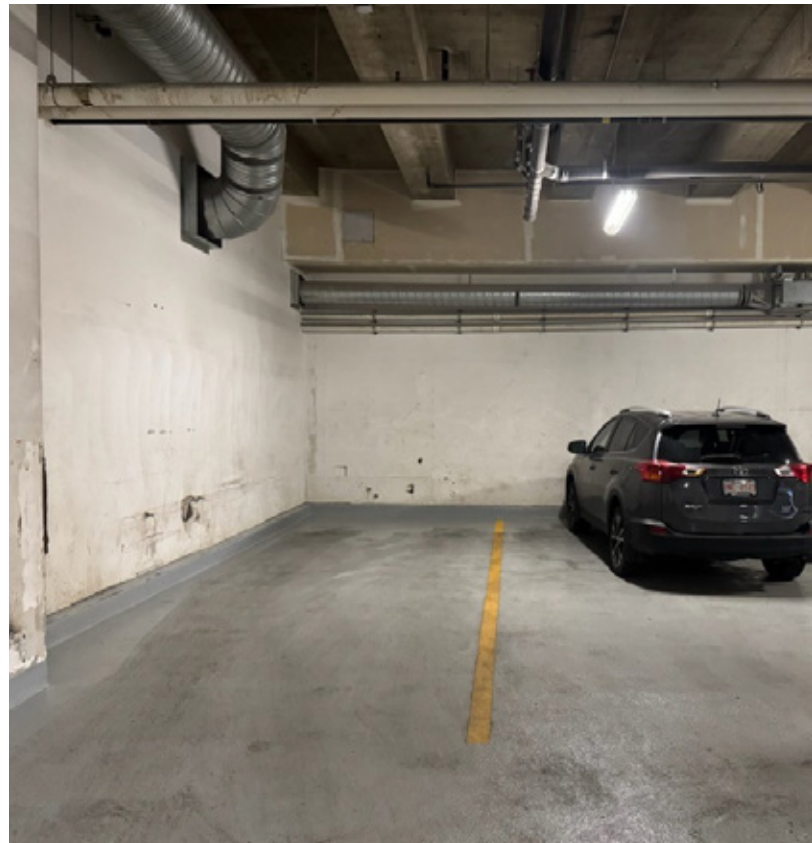
LIZOTTE
AND ASSOCIATES REAL ESTATE INC



FOR SALE

Main Floor Cambridge Commercial Condo

LIZOTTE
AND ASSOCIATES REAL ESTATE INC



FOR SALE

Main Floor Cambridge Commercial Condo

Property Information

Municipal Address: 10020 Jasper Avenue, Edmonton, AB

Legal Address: Plan 0425913, Block 7, 329, 331, 334

Size: Main Floor ±900 Sq. Ft.

Mezzanine ±429 Sq. Ft. *Bonus space

Total ±1,328 Sq. Ft.

Zoning: CCA (Core Commercial Arts Zone)

Parking: 3 parking spots available at Market Rent
(2 of which are oversized)

Contact

Chuck Clubine

Senior Associate

Cell: 780.264.7773

Direct: 780.784.6553

chuck@lizotterealestate.com

Tom Dean

Associate

Cell: 780.920.8019

Direct: 780.784.6550

tom@lizotterealestate.com

\$\$\$

Purchase Price: ~~\$519,000.00~~ \$499,000.00

Condo Fees: \$911.99/Month

Property Tax: \$6,249.40/Year

Demographics within 5KM

