

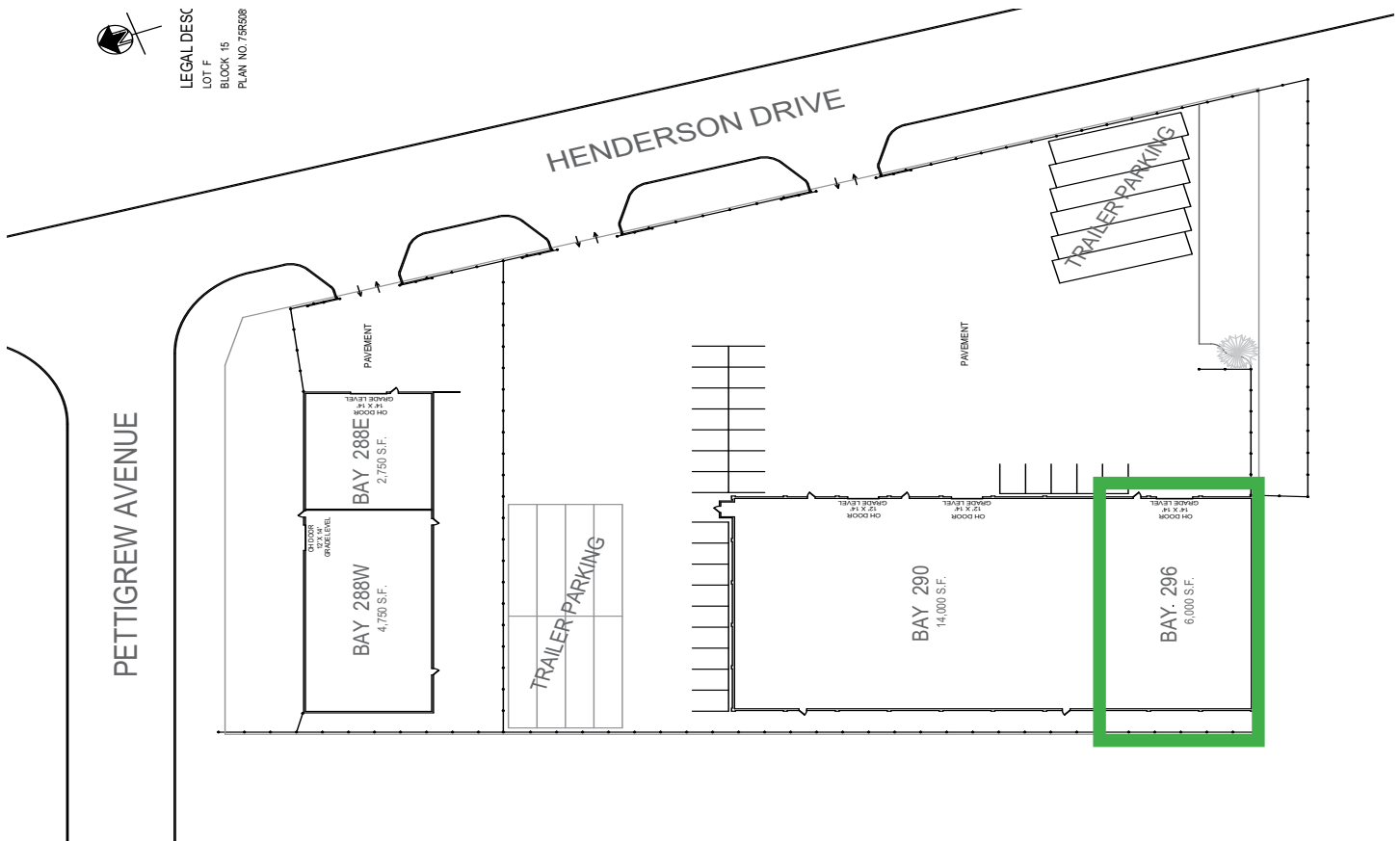
# 296 Henderson Drive

Ross Industrial District

296 Henderson Drive  
Regina, Saskatchewan  
[www.cbre.ca/296Henderson](http://www.cbre.ca/296Henderson)

6,000 SF Available September 2026





## Location Details

This 6,000 square foot industrial/warehouse space at 296 Henderson Drive, Regina, SK, will be available September 2026. Located in the Ross Industrial area with convenient access to Ring Road, this versatile space features a 14' grade-level overhead door and ample on-site parking along Henderson Drive.

This property is ideal for businesses seeking a well-situated industrial or warehouse solution.

Contact our team for more information.

## Leasing Details

- + **Possession:** September 2026
- + **Size:** 6,000 SF
- + **Net Lease Rate:** \$12.50 PSF
- + **Additional Costs:** \$4.40 PSF
- + **Units Include:**
  - (x1) 14' Grade Level Overhead Door
  - Ample On-Site Parking for Staff and Clients
  - Ceiling-mounted heaters



## Contact Us

### Walker Moulding

Associate Vice President  
+1 306 501 0609  
Walker.Moulding@cbre.com

### Erik Mehlsen

Senior Sales Associate  
+1 306 539 9754  
Erik.Mehlsen@cbre.com

© 2026 CBRE, Inc. All rights reserved. This disclaimer shall apply to CBRE Limited, and to all divisions of the Corporation ("CBRE"). The information set out herein (the "Information") has not been verified by CBRE, and CBRE does not represent, warrant or guarantee the accuracy, correctness and completeness of the Information. CBRE does not accept or assume any responsibility or liability, direct or consequential, for the Information or the recipient's reliance upon the Information. The recipient of the Information should take such steps as the recipient may deem necessary to verify the Information prior to placing any reliance upon the Information. The Information may change and any property described in the Information may be withdrawn from the market at any time without notice or obligation to the recipient from CBRE.