

110 to 216 sq. ft.
MINI OFFICES



FOR LEASE

17 Grenfell Crescent, Mini Offices Ottawa, ON K2G 0G3

Geoffrey H. Godding, CPM
COMMERCIAL REALTOR®
613.720.1186
geoffg@bell.net

Royal LePage Integrity Realty
2148 Carling Ave. Units 5 & 6
Ottawa, ON K2A 1H1
INDEPENDANTLY OWNED AND OPERATED

Kylene Gillies,
COMMERCIAL REALTOR®
613.859.8998
kylene@royallepage.ca

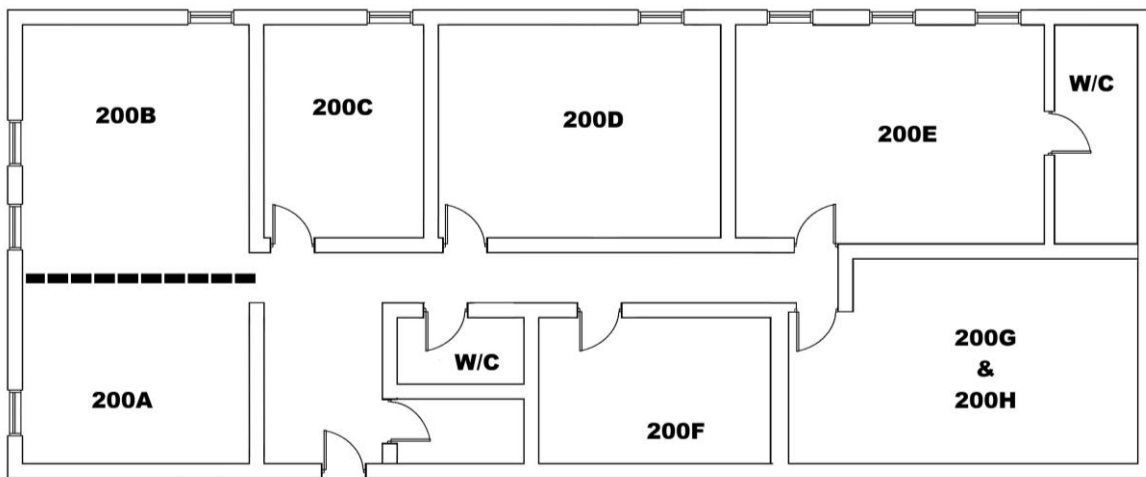
Property Features

- Suite 200A: 160 sq. ft. \$750.00 gross per month
- Suite 200B: 184 sq. ft. \$775.00 gross per month
- Suite 200C: 120 sq. ft. \$700.00 gross per month
- Suite 200D: 110 sq. ft. \$725.00 gross per month
- Suite 200E: 216 sq. ft. \$1,200.00 gross per month
- Suite 200F: TBD sq. ft. \$600.00 gross per month
- Suite 200G: TBD sq. ft. TBD gross per month
- Suite 200H: TBD sq. ft. TBD gross per month

Gross costs include: General Maintenance & Repair, Management & Administration, Insurance, Landscape, Real Estate Taxes, Snow Removal, Water & Sewer, Internet, Hydro, Gas, HVAC Maintenance and repairs, Common Area Cleaning

Video [Link](#)

Not to Scale



Royal LePage® is a registered trademark of Royal Bank of Canada and is used under license by Residential Income Fund L.P., Bridgemarq Real Estate Service Inc. and Bridgemarq Real Estate Service Manager Limited. All offices are independently owned and operated, except those marked as indicated at rlp.ca/disclaimer. Not intended to solicit currently listed properties or buyers under contract. The above information is from sources believed reliable, however, no responsibility is assumed for the accuracy of this information. ©2025 Bridgemarq Real Estate Service Manager Limited. All rights reserved.

PROPERTY OVERVIEW