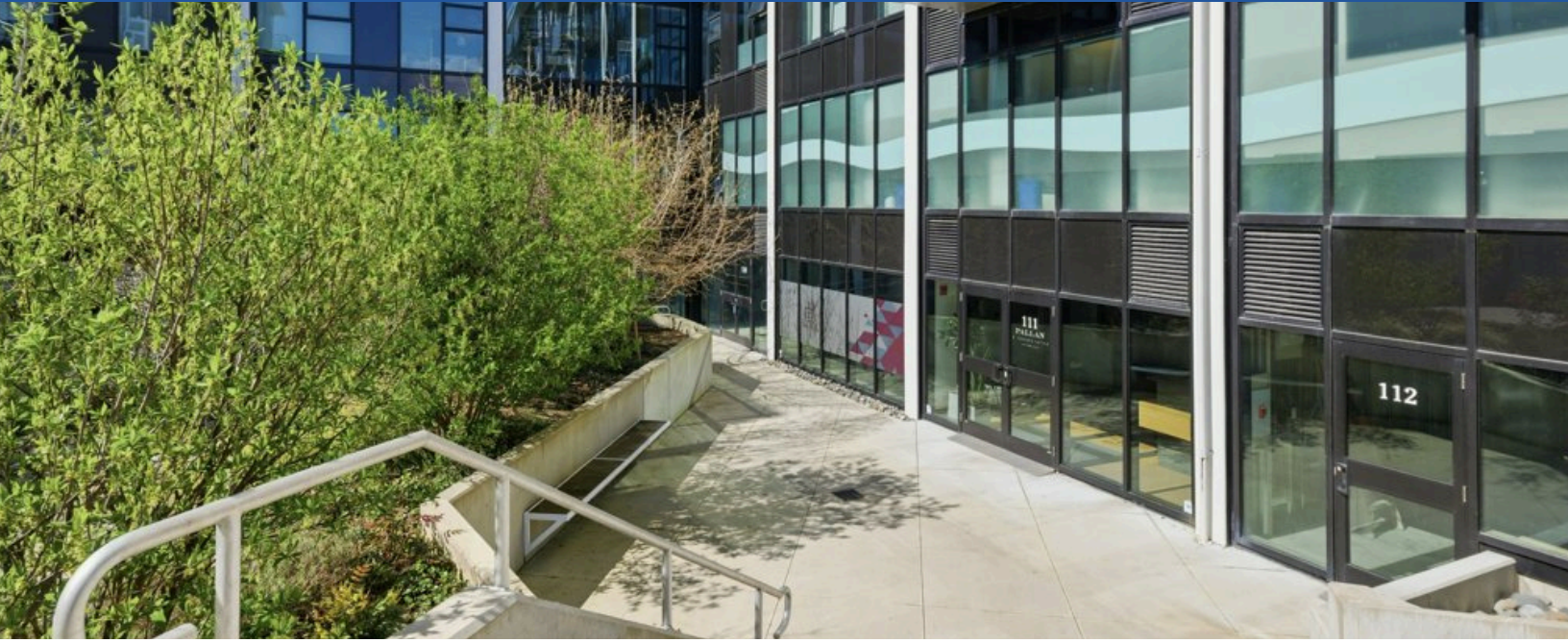


COURT ORDERED SALE 4,023 SF OFFICE/RETAIL SHELL

112 - 1105 Pandora Avenue, Victoria



REMAX
COMMERCIAL®
RE/MAX CAMOSUN

John MacDonald
Personal Real Estate Corporation

DIRECT: 604.751.0819
E: JOHN@BCCOMMERCIALSOLUTIONS.CA

For Sale: \$1,549,000 | \$385/SF



Property Overview

ADDRESS: 112 - 1105 Pandora Avenue, Victoria

ZONING: CA-1 ZONE, PANDORA AVENUE SPECIAL COMMERCIAL DISTRICT

PID: 031-301-207

SIZE: 4,023 SF

ASSESSED VALUE: \$1,808,000

Remax Commercial is pleased to present this Court-Ordered Sale, offering the opportunity to acquire a 4,023 SF commercial strata unit in The Wade.

Delivered in shell condition, this CA-1 zoned space provides a blank canvas ideal for medical, professional office, or technology users seeking to customize their premises. The unit features two separate entry points, ample power capacity, and efficient layout potential for a variety of configurations.

Accessed through a secure gated entry leading to a landscaped courtyard with gardens and fountain, the property offers a quiet, professional environment suited to owner-occupiers. Strategically positioned to serve surrounding residential density while maintaining privacy and security.

