



# 20 VICTORIA STREET

**PATRICK HENRY**

Senior Director, Leasing,

Sales Representative

GTA Office

416.507.2844

Patrick.Henry@gwira.com

GWL Realty Advisors Inc.

Brokerage

[www.gwira.com](http://www.gwira.com)

# BUILDING HIGHLIGHTS

20 Victoria is conveniently located in the Financial District with great access to public transit including a direct entrance to King Subway station, streetcars at your doorstep, and direct access to the PATH making this location easy for commute. Steps away from amenities, restaurants, shops, and more.



## SECURITY

CONCIERGE & SECURITY SYSTEM



## PUBLIC TRANSIT

WALKING DISTANCE TO PUBLIC TRANSIT



## PATH ACCESS

WALKING DISTANCE TO THE PATH

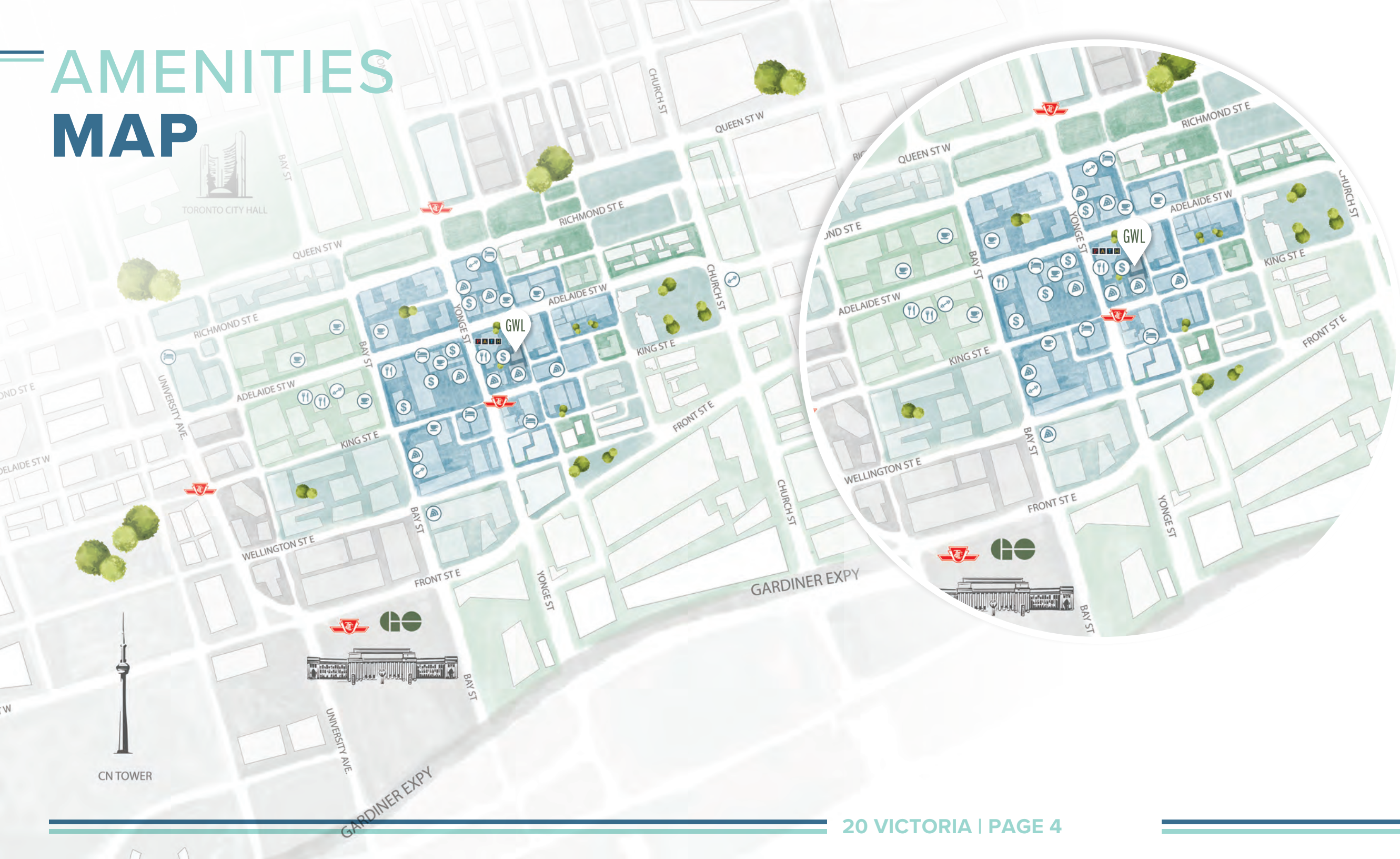


## WALKING DISTANCE

RESTAURANT  
20 VICTORIA, BEERBISTRO & JOEY KING ST



# AMENITIES MAP



## • TRANSPORTATION:

- GO TRAIN STATION
- Union Station
- TTC
- PARKING

## • AMENITIES

### HOTELS

- The St. Regis Toronto
- Cambridge Suites Toronto
- One King West Hotel & Residence
- Executive Hotel Cosmopolitan Toronto
- Hilton Hotel Toronto

### COFFEE SHOPS

- Pilot Coffee Roasters
- Vereda Central Coffee Roasters
- Dineen Coffee Co.
- Timothy 's World Coffee
- Au Pain Doré Bakery
- Daily Ritual Cafe
- 11:59 Bar Café
- Starbucks
- Second Cup

## RESTAURANTS

- CRAFT Beer Market Toronto
- Astor Lounge
- Cactus Club Cafe First Canadian Place
- Edna + Vita
- John & Sons Oyster House
- The Chase
- Lucie
- Sansotei Ramen
- Carisma
- Terroni
- Nami Japanese Restaurant
- Hy's Steakhouse & Cocktail Bar
- Leña Restaurante
- Jump Restaurant
- Cantina Mercato

## FOOD COURT

- Touch
- The Poke Box
- Pizzaiolo
- McDonald's
- Hero Certified Burgers
- Fast Fresh Foods
- Mamma's Pizza
- Big Smoke Burger
- Sultan's Mediterranean Grill

- Wat Ah Jerk Caribbean Grill
- The Indian Canteen
- Market Street Catch

## GYMS

- GoodLife Fitness Toronto
- Adelaide Club
- 6S Fitness
- Equinox Bay Street

## • FINANCE:

### BANKS

- TD Bank
- RBC Royal Bank
- Scotiabank

## • WALKABILITY SCORE:



Gwl Realty Advisors Inc. Brokerage [www.GWLRA.com](http://www.GWLRA.com)  
Copyright © 2026 GWL Realty Advisors Brokerage. All rights reserved.

This brochure is the intellectual property of GWL. Reproduction, including all text, photographs and designs, is the intellectual property of GWL distribution, or any unauthorized use is strictly prohibited. | \*Sales Representative \*\*Broker

# AMENITIES BUILDING COMING SOON

Welcome to Club House the newest state-of-the-art amenities facility at 20 Victoria St. Designed to enhance your workday with dynamic workout spaces, a serene yoga room, contemporary conference centre and tenant lounge. Experience seamless integration of health and productivity, fostering a balanced lifestyle right where you work.

**Unwind, recharge, and thrive.**

These renderings are for illustrative purposes only and may not accurately reflect final materials, colors, or design details. Variations may occur due to site conditions, availability, or project modifications. For accurate specifications, refer to official plans and documentation.





SUITE 900

## AVAILABLE SUITES



SUITE

- 400
- 900 **Model Suite**



SQ. FT.

- 7,244 sq. ft.
- 4,372 sq. ft.



OCCUPANCY

- Available Immediately
- Available July 1st, 2026



ELEVATOR LOBBY

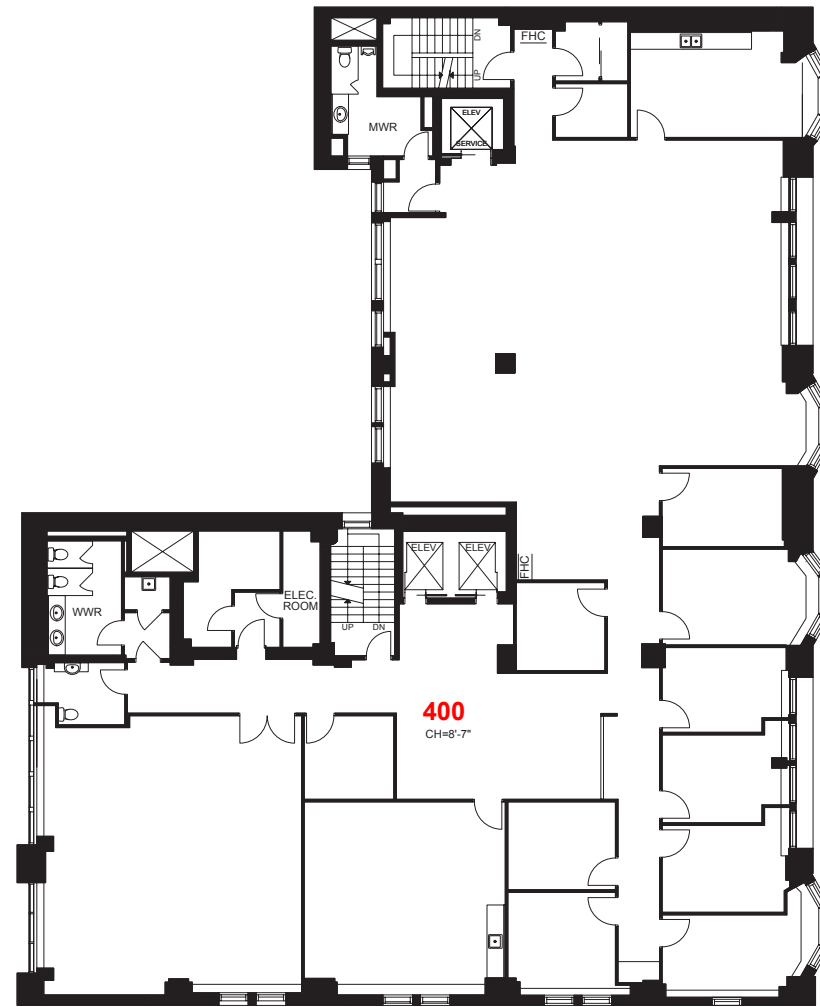


FRONT ENTRANCE

# SUITE 400 - 7,244 SQ.FT.

AVAILABLE IMMEDIATELY

- The build-out consists of 9 offices or meeting rooms, a large boardroom, two kitchens, and an open area designed for workstations and collaboration

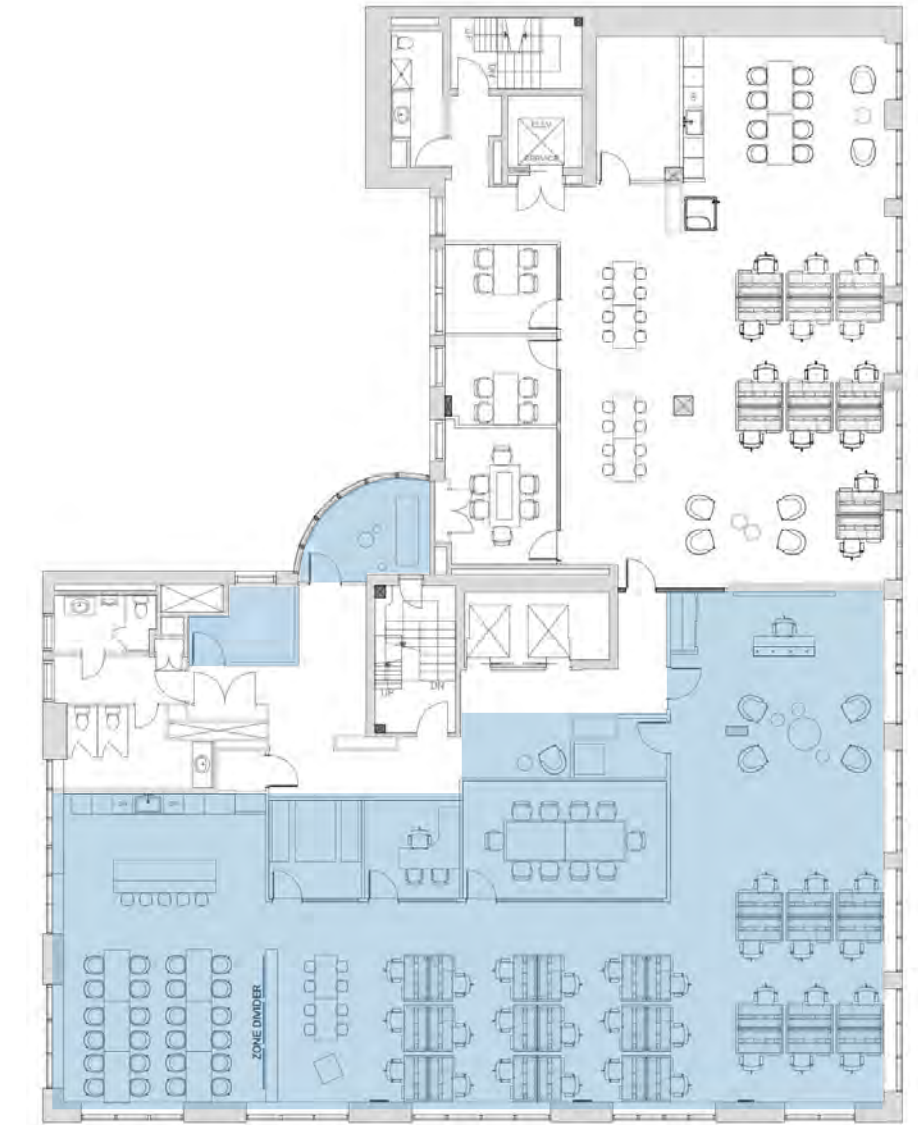


# SUITE 900 - 4,372 SQ. FT.

AVAILABLE JULY 1ST, 2026



- Model Suite
- Build out includes reception, 2 offices/meeting rooms, kitchen, boardroom, 30 sit/stand desks and open area for collaboration
- Fully Furnished





COURTYARD

# BUILDING OVERVIEW



**TOTAL RENTABLE AREA:**  
52,243 sq. ft.



**NUMBER OF STORIES:**  
9



**YEAR BUILT:**  
1910

## PROPERTY DESCRIPTION

- Typ. Floor Plate: 6,450 sq ft
- Posted Net Rate: Negotiable
- PSF Realty Tax: \$6.00
- PSF Utilities: \$1.74
- PSF Operating Costs: \$21.83
- PSF Additional Rent Total: \$29.57 (2026 est.)

## ELEVATORS

- Low rise: 2
- Freight: 1

## PARKING

- Below ground # stalls: 256 – located at 1 Adelaide St. E.
- Monthly parking cost: \$400.38/mth tenant unreserved; \$580.82/mth tenant reserved
- Parking description: Three (3) levels of conditioned parking

## SAFETY AND SECURITY

- Fire detection system: YES
- Sprinkler system: YES
- Manned security: YES (fr. 1 Adelaide St E)
- Security system: YES

## POWER

- Typical power watts/sq. ft.:
  - Tenant: 2 watts/sq. ft.
  - Lighting: 2 watts/sq. ft.
  - Other: 2 watts/sq. ft.

## HVAC

- HVAC dist system: Variable Air Volume
- HVAC hours: 7:30am - 6:00pm Mon to Fri
- After hours HVAC: \$70/hr (+15% Admin Fee & HST)

## BUILDING SPECIFICATION

- Ceiling Height: 8'8"
- Wall Type: Window Glazing
- Washrooms per floor: 2
- Satellite dish capability: YES
- Fibre optic capability: YES (Rogers)
- Shipping receiving: YES
- Emergency generator: YES

## AWARDS & DESIGNATIONS

- BOMA BEST Silver

**PATRICK HENRY**

Senior Director, Leasing,  
Sales Representative

GTA Office  
416.507.2844  
Patrick.Henry@gwlra.com

GWL Realty Advisors Inc.  
Brokerage  
www.gwlra.com



The information contained herein is provided for informational purposes only and is not intended to provide you with any financial, investment, real estate, legal, accounting, tax, or other professional advice. All visual representations, illustrations, photographs and artist renderings are conceptual for representational purposes only and cannot be regarded as representations of fact. All features, specifications and plans are subject to change without notice. Not all amenities and features depicted herein may be constructed in accordance with the visual representations, illustrations, photographs or artist renderings. Maps, floor plans, models and other improvements represented are not to scale or shown in their final as-built locations and orientations. While the information contained herein is believed to be reliable and accurate, GWL Realty Advisors Inc. and its affiliates ("GWLRA") expressly disclaims all representations, warranties or conditions, express or implied, statutory or otherwise, including, without limitation, the warranties and conditions of merchantable quality and fitness for a particular purpose, compatibility, timeliness, or accuracy. The user assumes full responsibility for risk of loss of any nature whatsoever resulting from the use of this information.

For more information concerning the terms and conditions of use of this document, please refer to our website at <https://www.gwlrealtyadvisors.com/legal/>.