



848-1,420 SF OF RETAIL FOR LEASE

1205

broad street

Discover the Heart of Victoria at
BroadView Block

VICTORIA | BC

1205

broad street

BROADVIEW BLOCK

The Broadview Block is a premier office and retail building situated in the heart of Victoria's historic downtown. Constructed between 1956 and 1957 by the Dominion Company as Victoria's first Canada Trust bank, it features striking board-formed concrete with exposed walls and ceilings in various areas.

As one of the finest examples of mid-century modern architecture in the historic district, the Broadview Block is located at the northeast corner of Broad and View Streets, serving as a gateway to the Broad Street Arts District, nestled between Government and Douglas High Streets.

View Street, an extension of Victoria's iconic Bastion Square, is one of the city's busiest pedestrian pathways, ranking third in foot traffic according to the Downtown Victoria Business Association. The corner of Broad and View is one of the most prominent locations in Victoria.

848-1,420 SF | Retail Availability

Discover Victoria's Core at
BroadView Block





RETAIL OVERVIEW

BROADVIEW BLOCK

BroadView Block is an ideal location for any retail venture. Adjacent to The Bay Centre and Trounce Alley, it is also just steps away from the bustling Government Street. The units are perfect for restaurants and coffee shops, but they are also great for boutique-style retailers.

- 15' ceiling heights
- Flexible and open floor plans
- Demisable unit options
- New HVAC & new storefront windows

Total Available Retail

1203 Broad St (CRU 1) - LEASED

650 View St (CRU 2) - LEASED

654 View St (CRU 3) - 848 SF

658 View St (CRU 4) - 1,420 SF

Picturesque

Retail

Experience



Looking down View Street



Interior cafe rendering



Interior restaurant rendering

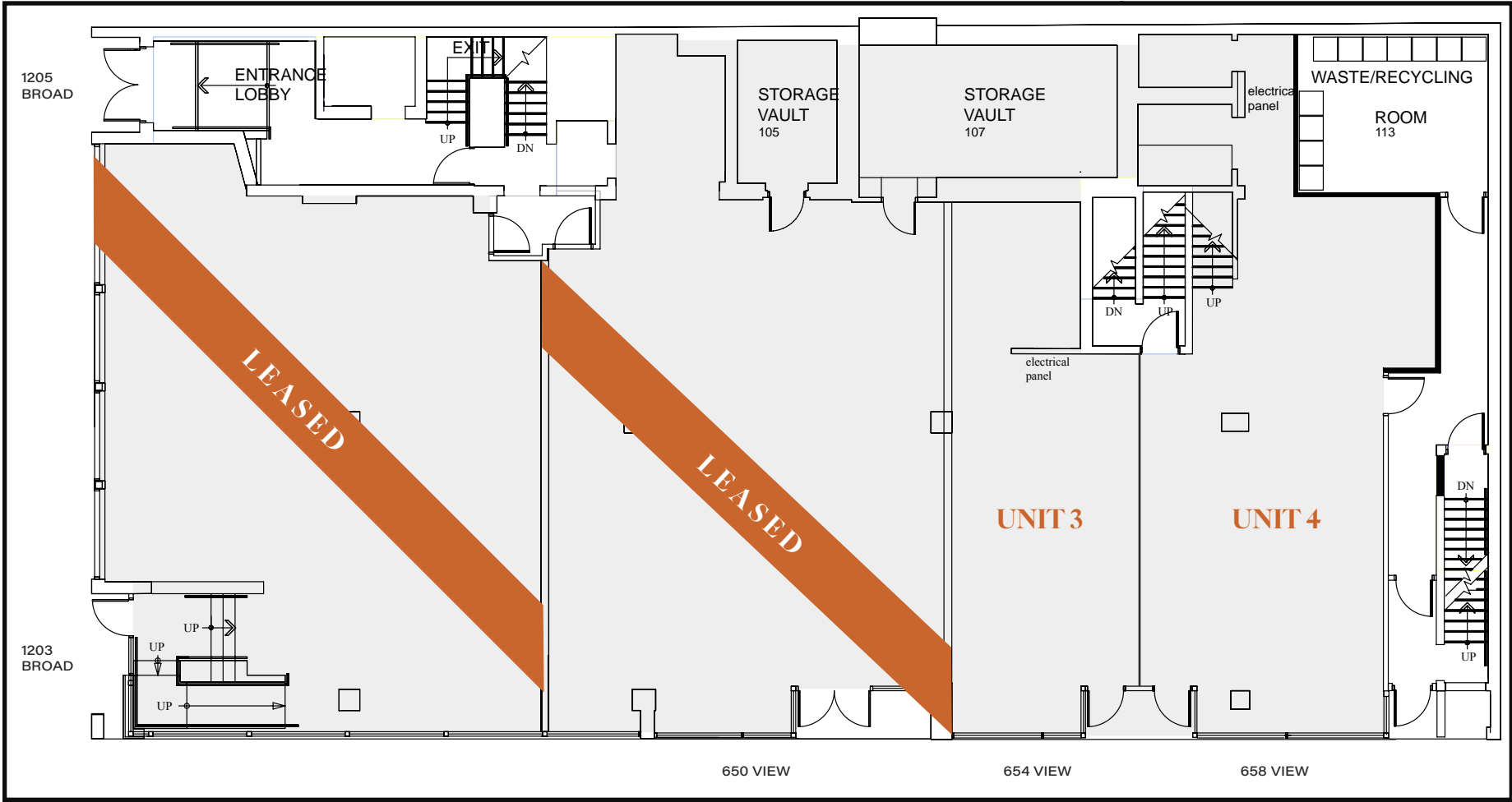


Retail at
BroadView Block

FLOOR PLAN

RETAIL DEMISE OPTIONS

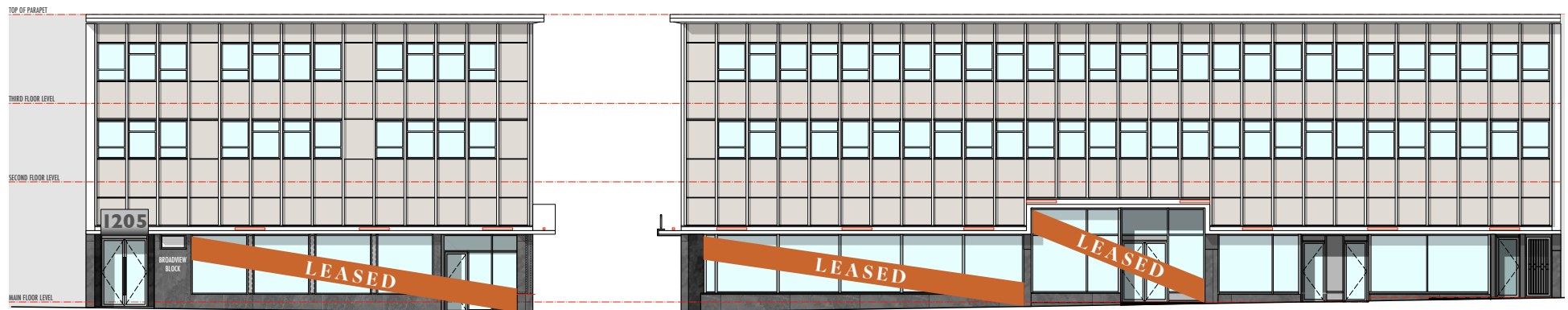
These demise options are simply guidelines. The demise options here are endless and customizable.



Retail Availability

Minimum Available - 848 SF
Maximum Available - 1,420 SF

- Patio opportunities
- 15' Ceiling heights & large storefront windows
- Flexible & demisable floorplans
- Accessible basement space available



BROAD STREET

VIEW STREET

THE CORE

VICTORIA | BC

400M RADIUS

73
restaurants

21
clothing & shoe retailers

26
cafes

1,115
parking spots

BROADVIEW BLOCK



NEARBY RETAIL

Earls
KITCHEN • BAR

BODEGA
tapas • wine • bar



new balance

KHARMA
SALONS



The Tapa Bar
Restaurant

patagonia



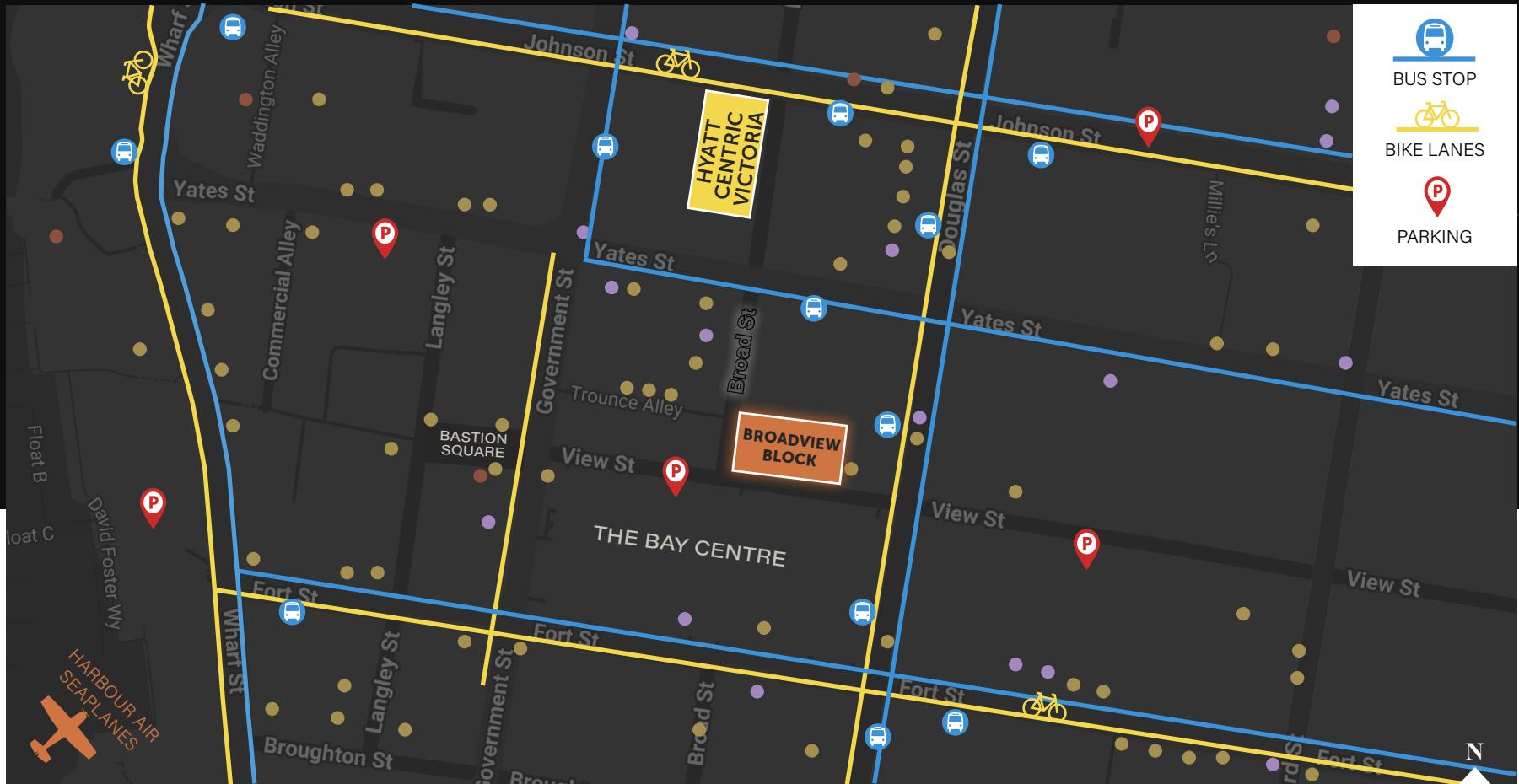
SHOPPERS
DRUG MART

QUAZAR'S
ARCADE





MAP


BROADVIEW BLOCK



- RESTAURANT
- CAFES
- HOTEL


25
 minutes
 TO LANGFORD


35
 minutes
 TO VICTORIA
 INTERNATIONAL
 AIRPORT


40
 minutes
 TO BC FERRIES


1,115
 parking stalls
 300M RADIUS

848-1,420 OF RETAIL SPACE FOR LEASE
6,930-14,018 SF OF OFFICE FOR LEASE

1205

broad street

Discover the Heart of Victoria at
BroadView Block

JEFF LOUGHEED
Vice President
250 386 0001
jeff.lougheed@cbre.com

ANDREA TEAHEN
Senior Associate
250 813 3377
andrea.teahen@cbre.com

MITCH BRYAN
Associate
250 385 1225
mitch.bryan@cbre.com

CBRE



This disclaimer shall apply to CBRE Limited, Real Estate Brokerage, and to all other divisions of the Corporation; to include all employees and independent contractors ("CBRE"). The information set out herein, including, without limitation, any projections, images, opinions, assumptions and estimates obtained from third parties (the "Information") has not been verified by CBRE, and CBRE does not represent, warrant or guarantee the accuracy, correctness and completeness of the Information. CBRE does not accept or assume any responsibility or liability, direct or consequential, for the Information or the recipient's reliance upon the Information. The recipient of the Information should take such steps as the recipient may deem necessary to verify the Information prior to placing any reliance upon the Information. The Information may change and any property described in the Information may be withdrawn from the market at any time without notice or obligation to the recipient from CBRE. CBRE and the CBRE logo are the service marks of CBRE Limited and/or its affiliated or related companies in other countries. All other marks displayed on this document are the property of their respective owners. All Rights Reserved.

Mapping Sources: Canadian Mapping Services canadamapping@cbre.com; DMTI Spatial, Enviroics Analytics, Microsoft Bing, Google Earth.