

Office | For Lease

Suite #300 , #501 & #507

1367 W Broadway

Vancouver, BC

Central location on the north side of West Broadway. Close to restaurants, banks and shops. Excellent public transit access. Easy access to Downtown Vancouver via Hemlock Street on ramp to the Granville Street Bridge.



Contact

Brad Haw

Associate Vice President

Office Properties

+1 604 662 5132

brad.haw@cbre.com

CBRE





Property Details

Asking Lease Rate	Call Listing Agent for details
Additional Rent & Property Taxes	\$22.38 PSF (2025 estimate)
Parking	1 stall per 500 sq. ft. leased, gated reserved stalls currently at \$160.00 per stall per month plus applicable taxes, plus hourly visitor parking on P2
Available	Immediately



Building Features

- + Moderhigh-rise concrete building
- + Underground tenant parking (gated)
- + Ample visitor parking
- + Fully air conditioned with multiple zones per floor
- + Storage available in parkade level

Suite #300

11,743 SF - Entire Floor
Fully improved with quality improvements

- + Stunning north views
- + Overlooking attractive garden area
- + Bright premises with windows in all four directions

Suite #501

2,116 SF - Available Nov 1, 2025
Efficient layout

- + Views to the north
- + Access to outside deck
- + Bright premises with windows facing north and east

Suite #507

3,624 SF
Nicely improved with quality improvements

- + Ample window line with outlooks to the west, south and east
- + Improvements include four offices, lunchroom and large open area
- + Upgraded common areas on 5th floor

Brad Haw

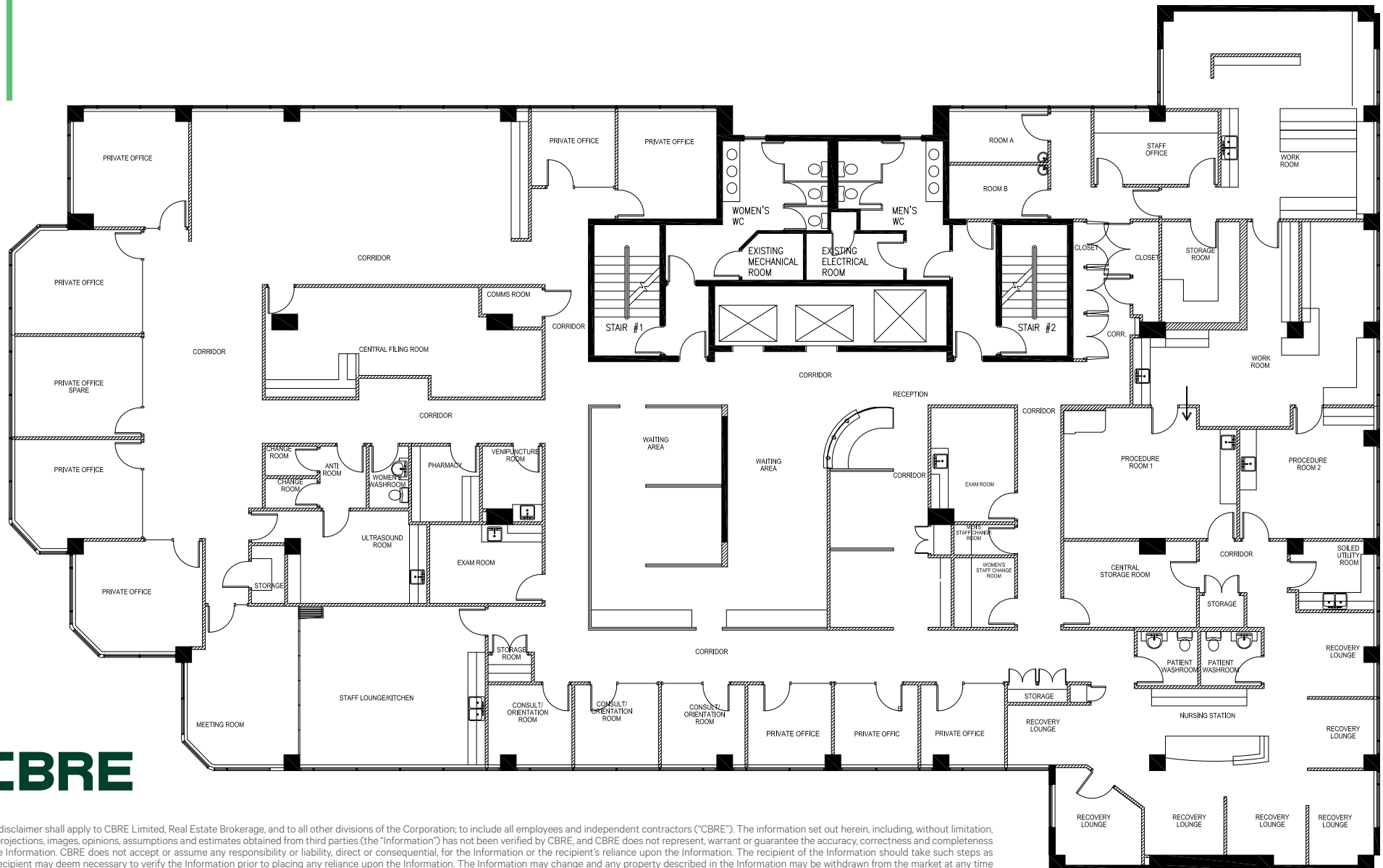
Associate Vice President Office Properties

+1 604 662 5132

brad.haw@cbre.com

Floor Plan | Suite #300 - 1367 W Broadway

NOT TO SCALE

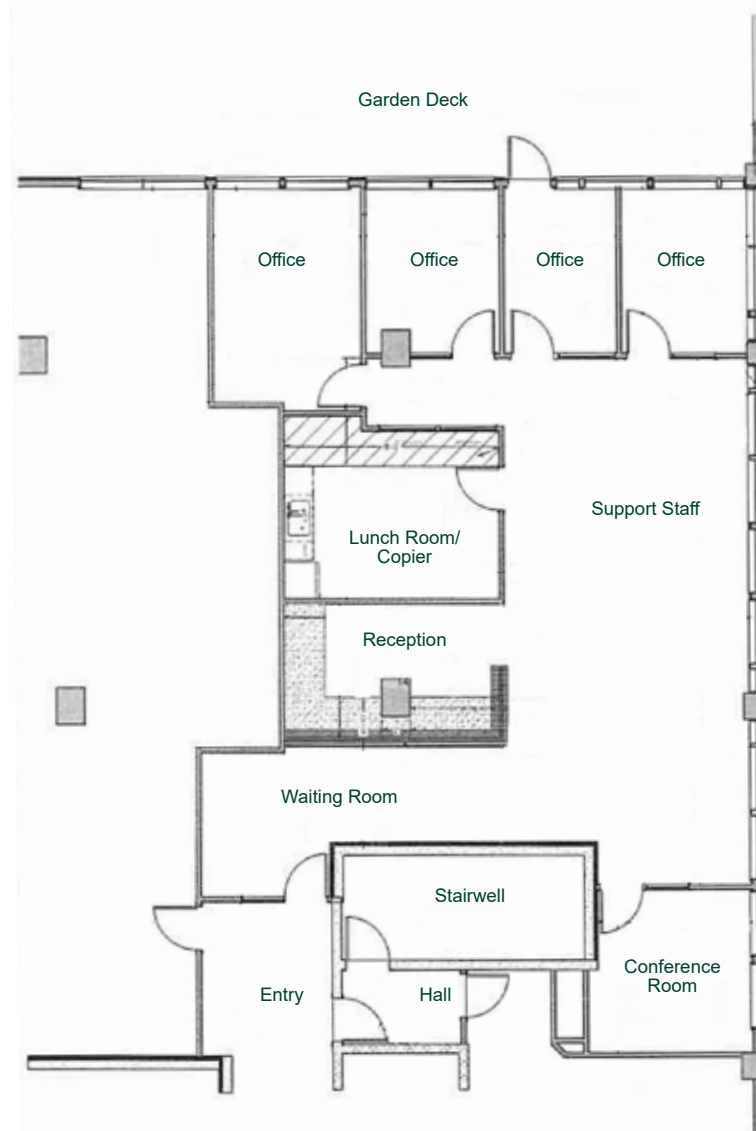


This disclaimer shall apply to CBRE Limited, Real Estate Brokerage, and to all other divisions of the Corporation; to include all employees and independent contractors ("CBRE"). The information set out herein, including, without limitation, any projections, images, opinions, assumptions and estimates obtained from third parties (the "Information") has not been verified by CBRE, and CBRE does not represent, warrant or guarantee the accuracy, correctness and completeness of the Information. CBRE does not accept or assume any responsibility or liability, direct or consequential, for the Information or the recipient's reliance upon the Information. The recipient of the Information should take such steps as the recipient may deem necessary to verify the Information prior to placing any reliance upon the Information. The Information may change and any property described in the Information may be withdrawn from the market at any time without notice or obligation to the recipient from CBRE. CBRE and the CBRE logo are the service marks of CBRE Limited and/or its affiliated or related companies in other countries. All other marks displayed on this document are the property of their respective owners. All Rights Reserved.

Mapping Sources: Canadian Mapping Services canadamapping@cbre.com; DMTI Spatial, Environics Analytics, Microsoft Bing, Google Earth.

Floor Plan | Suite #501 - 1367 W Broadway

NOT TO SCALE



Contact

Brad Haw

Associate Vice President Office Properties

+1 604 662 5132

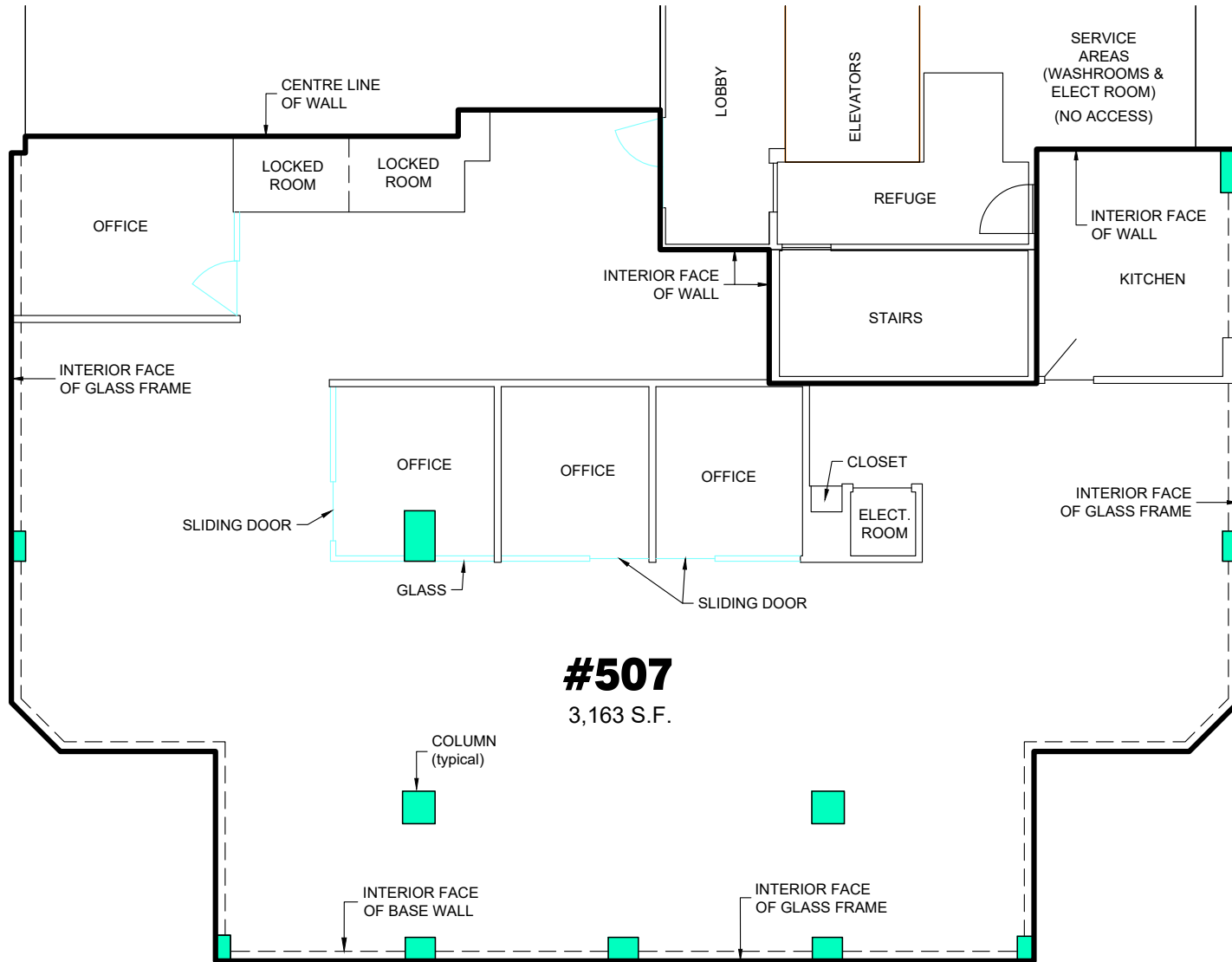
brad.haw@cbre.com

This disclaimer shall apply to CBRE Limited, Real Estate Brokerage, and to all other divisions of the Corporation; to include all employees and independent contractors ("CBRE"). The information set out herein, including, without limitation, any projections, images, opinions, assumptions and estimates obtained from third parties (the "Information") has not been verified by CBRE, and CBRE does not represent, warrant or guarantee the accuracy, correctness and completeness of the Information. CBRE does not accept or assume any responsibility or liability, direct or consequential, for the Information or the recipient's reliance upon the Information. The recipient of the Information should take such steps as the recipient may deem necessary to verify the Information prior to placing any reliance upon the Information. The Information may change and any property described in the Information may be withdrawn from the market at any time without notice or obligation to the recipient from CBRE. CBRE and the CBRE logo are the service marks of CBRE Limited and/or its affiliated or related companies in other countries. All other marks displayed on this document are the property of their respective owners. All Rights Reserved.

Mapping Sources: Canadian Mapping Services canadamapping@cbre.com; DMTI Spatial, Environics Analytics, Microsoft Bing, Google Earth.

Floor Plan | Suite #507 - 1367 W Broadway

NOT TO SCALE



Contact

Brad Haw

Associate Vice President Office Properties

+1 604 662 5132

brad.haw@cbre.com

This disclaimer shall apply to CBRE Limited, Real Estate Brokerage, and to all other divisions of the Corporation; to include all employees and independent contractors ("CBRE"). The information set out herein, including, without limitation, any projections, images, opinions, assumptions and estimates obtained from third parties (the "Information") has not been verified by CBRE, and CBRE does not represent, warrant or guarantee the accuracy, correctness and completeness of the Information. CBRE does not accept or assume any responsibility or liability, direct or consequential, for the Information or the recipient's reliance upon the Information. The recipient of the Information should take such steps as the recipient may deem necessary to verify the Information prior to placing any reliance upon the Information. The Information may change and any property described in the Information may be withdrawn from the market at any time without notice or obligation to the recipient from CBRE. CBRE and the CBRE logo are the service marks of CBRE Limited and/or its affiliated or related companies in other countries. All other marks displayed on this document are the property of their respective owners. All Rights Reserved.

Mapping Sources: Canadian Mapping Services canadamapping@cbre.com; DMTI Spatial, Environics Analytics, Microsoft Bing, Google Earth.