

66

SLATER STREET

Ottawa, Ontario

Suite 101 - 1,091 SF

Suite 103 - 1,163 SF

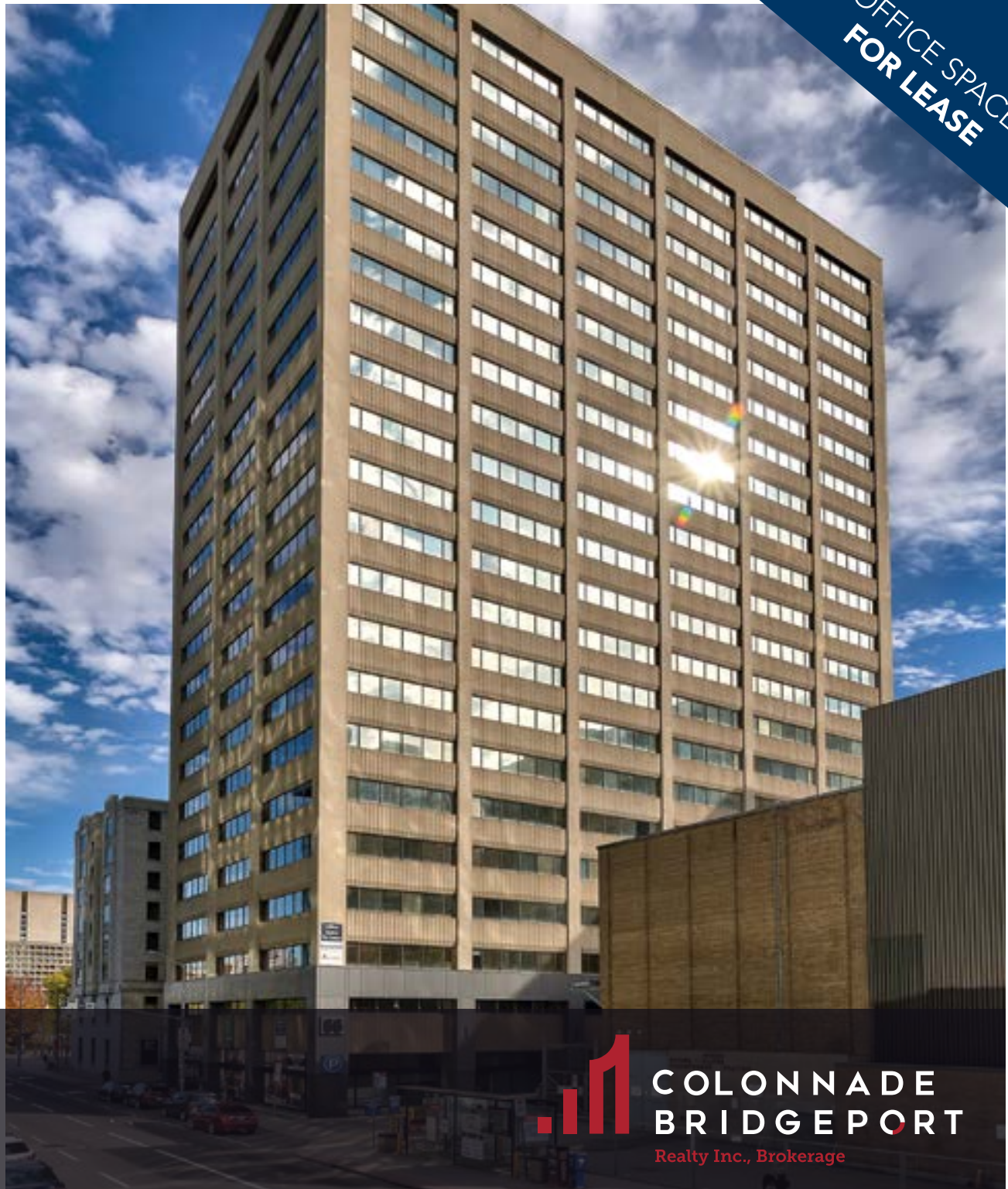
Suite 600 - 11,663 SF

Suite 700 - 11,665 SF

Suite 1730 - 3,001 SF

Suite 2102 - 849 SF

Suite 2200 - 11,666 SF



OFFICE SPACE
FOR LEASE

BRENT ARSENAU

Real Estate Broker of Record

Colonnade BridgePort Realty Inc., Brokerage

613.225.8118



**COLONNADE
BRIDGEPORT**

Realty Inc., Brokerage

66 SLATER STREET

Ottawa, Ontario

LEASE DETAILS

Rental Rate: Please Inquire

Taxes & Operating: \$18.81 SF

Operating costs, tax estimates and rental ranges are based on 2026 figures and are subject to change.

AVAILABLE IMMEDIATELY



OPPORTUNITY

Suite 101 - 1,091 SF

Suite 103 - 1,163 SF

Suite 600 - 11,663 SF

Suite 700 - 11,665 SF

Suite 1730 - 3,001 SF

Suite 2102 - 849 SF

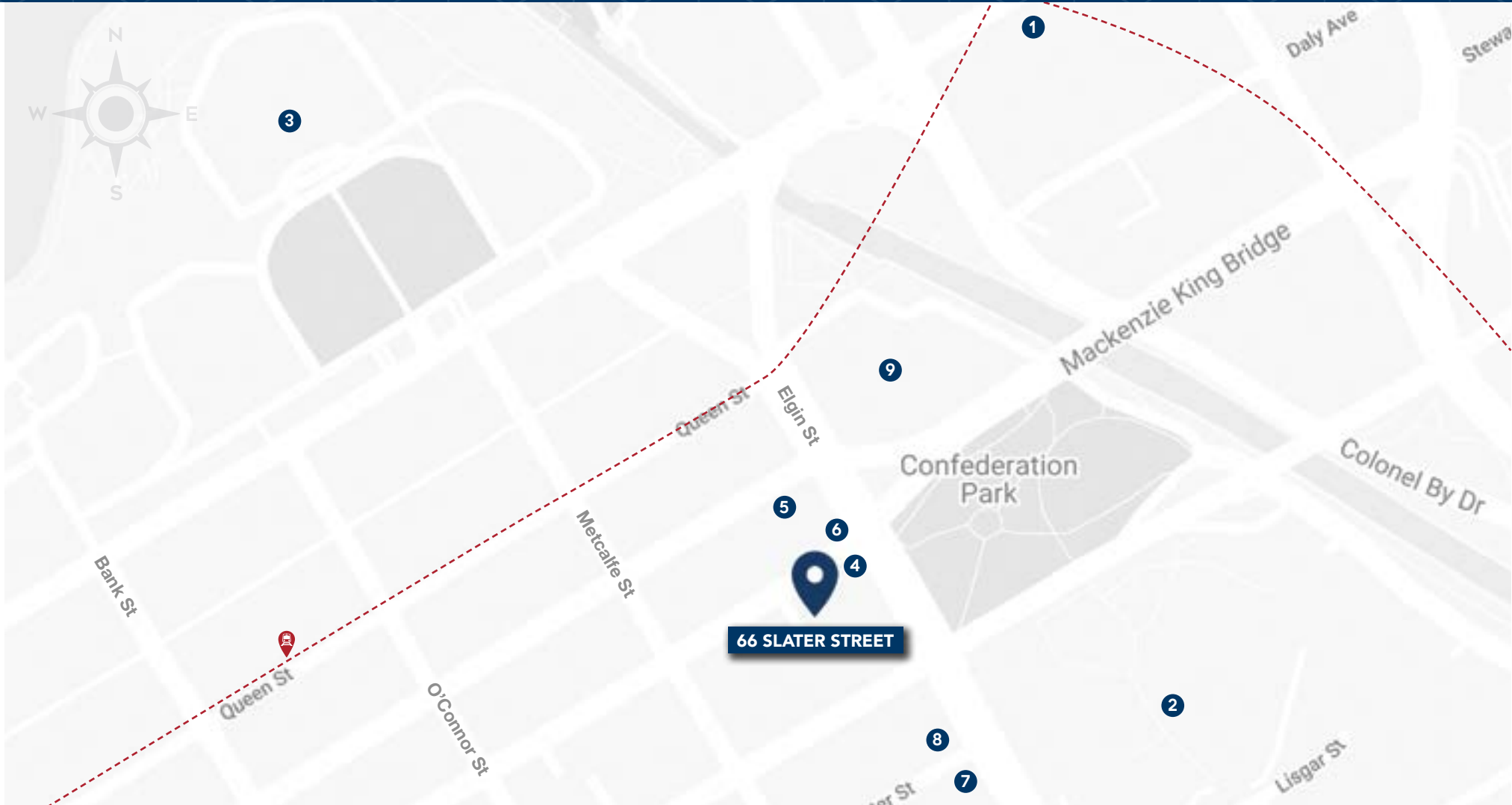
Suite 2200 - 11,666 SF

HIGHLIGHTS

- ✓ Located on the main downtown transitway corridor and steps from future LRT station
- ✓ High profile corner of Elgin St. Slater St.
- ✓ Easily accessible from the Queensway and Kichi Zibi Mikan Parkway
- ✓ On-site, underground parking available
- ✓ Close to downtown amenities including hotels, banking, Rideau Centre shops, Elgin Street restaurants and more



AREA MAP



66 SLATER STREET

Ottawa, Ontario

- 1 CF Rideau Centre
- 2 Ottawa City Hall
- 3 Parliament Hill
- 4 Grill 41
- 5 Tim Hortons
- 6 Starbucks
- 7 Brown's Social House
- 8 Beckta Dining & Wine
- 9 National Arts Centre

66

SLATER STREET

Ottawa, Ontario

SUITE 101

1,091 SF (office or retail)

SUITE 103

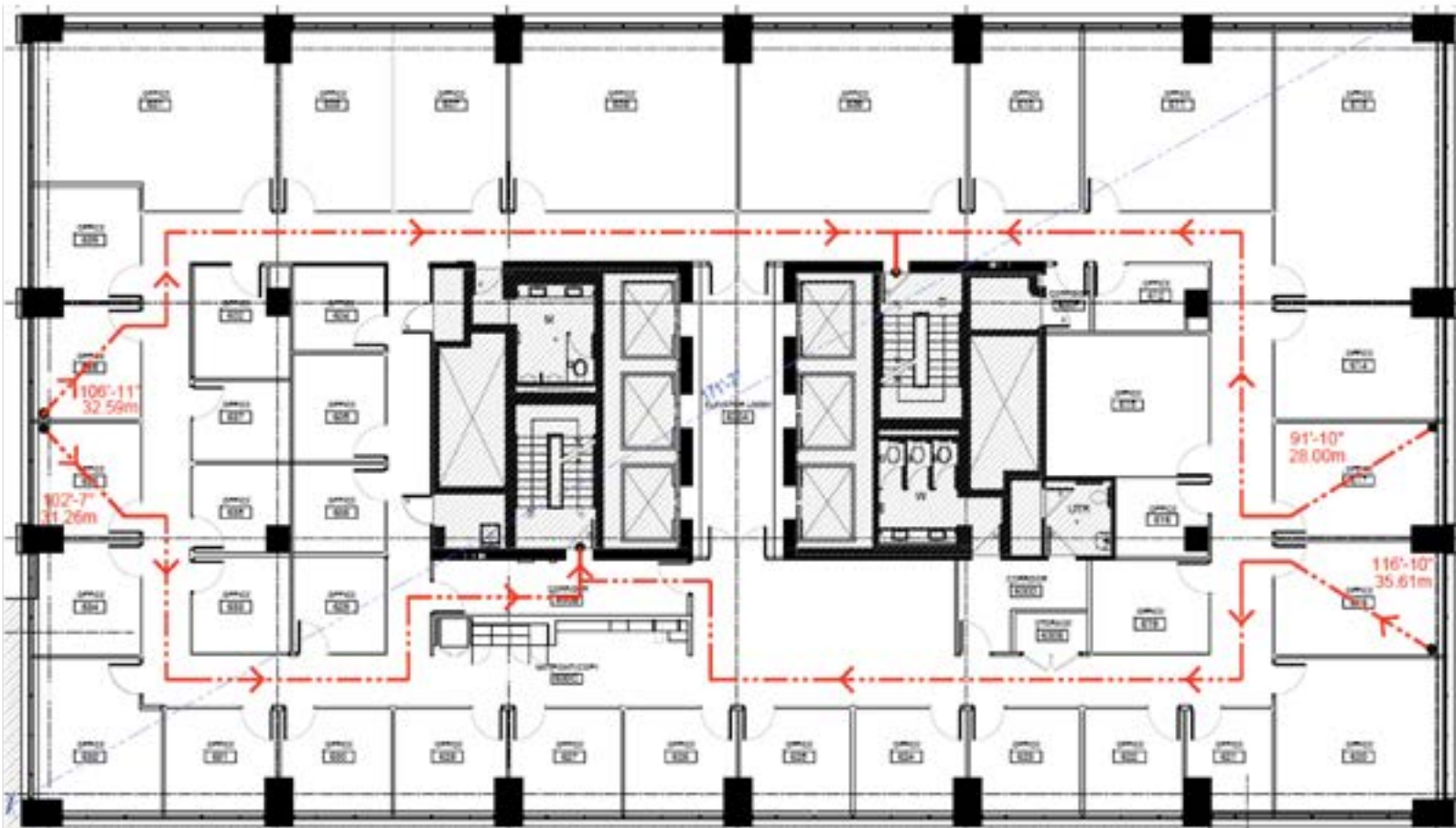
1,163 SF (office or retail)



66 SLATER STREET

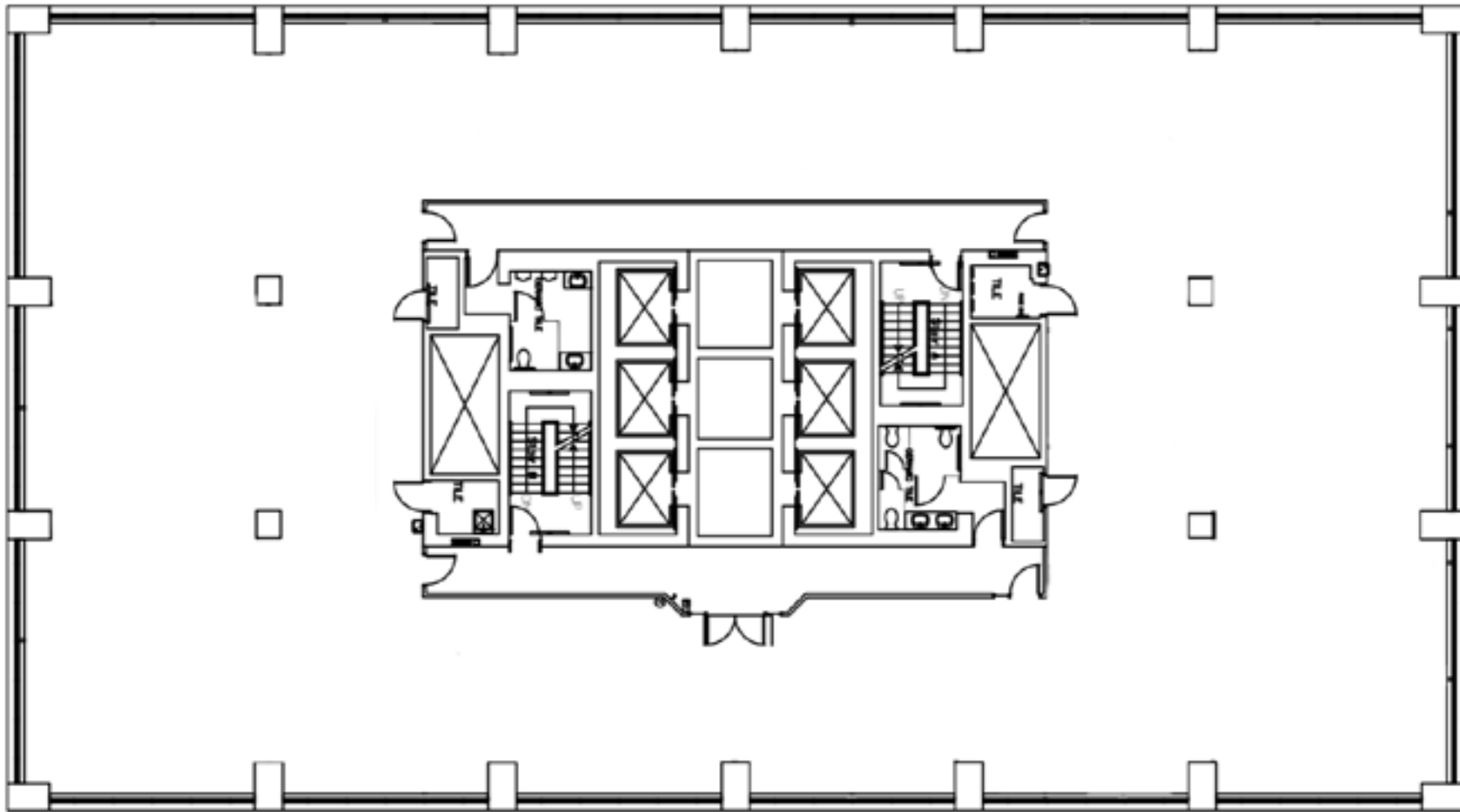
Ottawa, Ontario

SUITE 600
11,663 SF



SUITE 700

11,665 SF



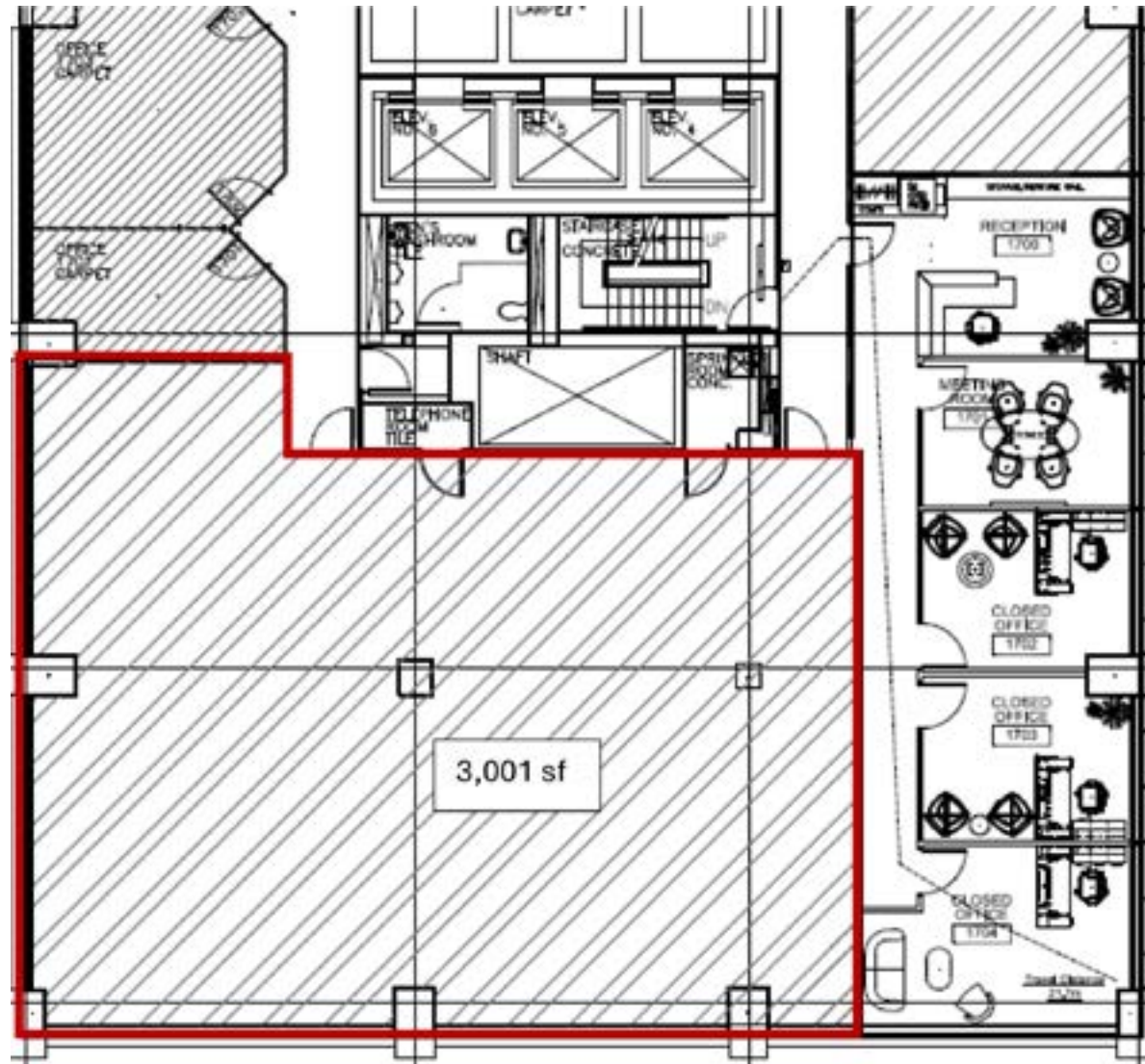
66

SLATER STREET

Ottawa, Ontario

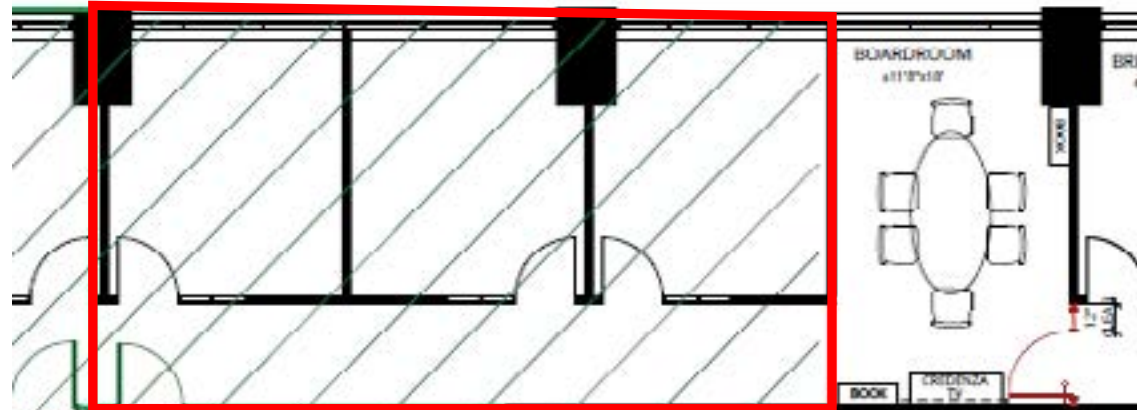
SUITE 1730

3,001 SF



SUITE 2102

849 SF



DOOR: THIS TO SUITE
D ACCESS PUBLIC
DIRECTION: FINAL LOCATION
IS DEPENDANT ON
TRADING WALL LOCATION &
ZONING REQUIREMENTS

