

FOR LEASE | HIGH EXPOSURE
883 HAMILTON ST



GET IN TOUCH

Emily Aeng
Property Negotiator
T: 604.873.7990
E: emily.aeng@vancouver.ca

FOR LEASE | HIGH EXPOSURE 883 HAMILTON ST



UNIT FEATURES

- Turn key restaurant
- Kitchen and equipment in place
- Frontage along Hamilton Street
- Excellent exposure & signage opportunities
- Two (2) washrooms
- 1 parking stall at rear
- Available anytime

AVAILABLE SPACE

Unit 2,250 SF

RENTAL RATE

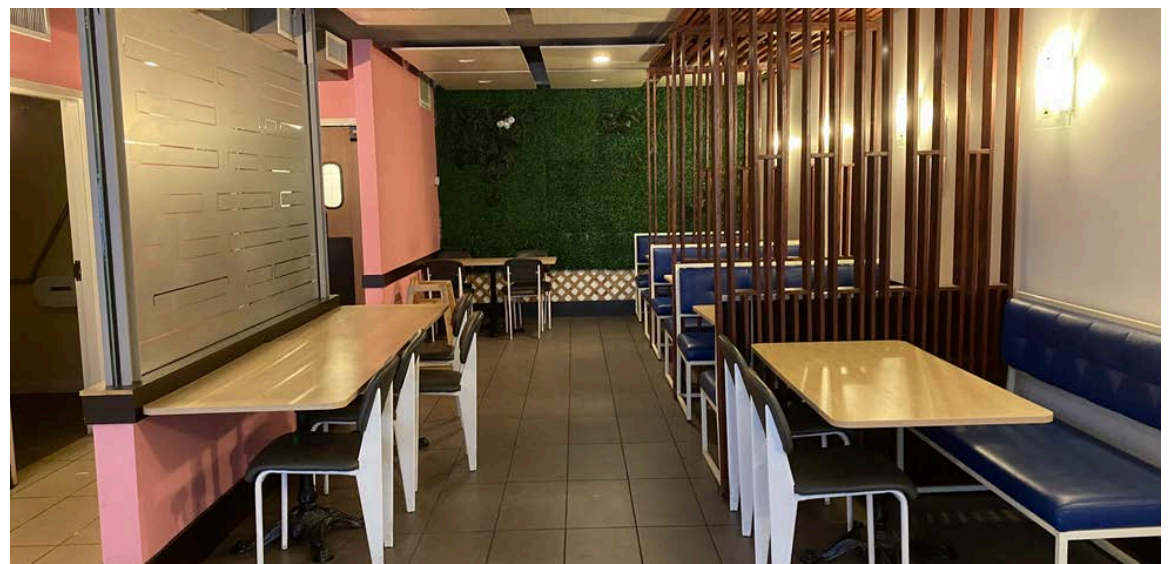
Gross rent \$72.00 PSF

Rent inclusive of realty taxes and common area maintenance. Excludes utilities

Tenant responsible for own outgoings

ZONING

DD



FOR LEASE | HIGH EXPOSURE 883 HAMILTON ST



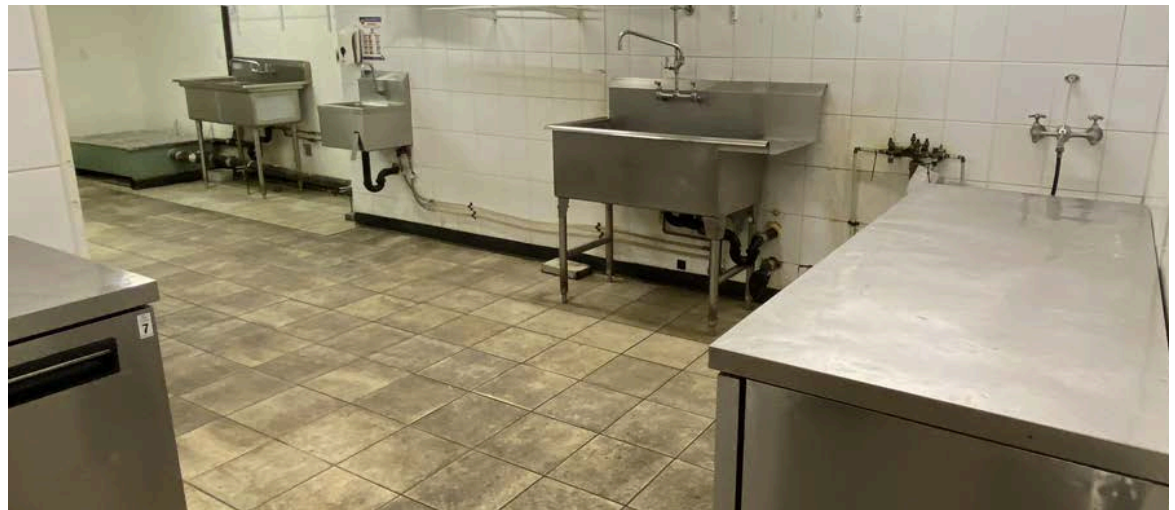
UNIT INFORMATION

The unit for lease is a fully equipped turn key restaurant with excellent exposure and signage opportunities.

LOCATION

This property is located in the Yaletown neighborhood, located along busy Hamilton Street between Smithe Street and Robson Street. The property is within minutes to downtown business district, Robson shopping district and historic Chinatown. Nearby amenities include restaurants, banks, coffee shops and shopping.

Major transit routes include 5 minute walk to Canada Line, Cambie Street Bridge and Canada line. Bike routes along Smithe Street, Nelson Street and Beatty Street.



E. & O. E. The information contained herein was obtained from sources deemed reliable, and while thought to be correct, it is not guaranteed by the City of Vancouver and is subject to change without notice. All information should be carefully verified. All measurements quoted herein are approximate.

FOR LEASE | HIGH EXPOSURE 883 HAMILTON ST

