
**PEMBERTON
HOLMES LTD**
 PROPERTY MANAGEMENT DIVISION
RESIDENTIAL • COMMERCIAL • STRATA

OFFICE FOR SUBLEASE OR DIRECT LEASE

2 - 811 ROYAL OAK

SUMMARY

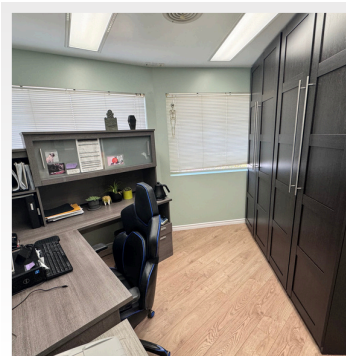
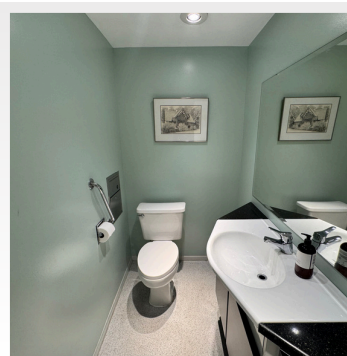
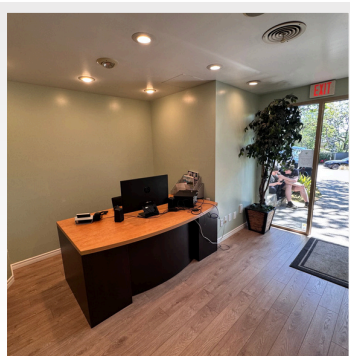
Versatile ground floor unit for lease in Broadmead, on the corner of Royal Oak Drive & Chatterton Way and across the street from the Broadmead Village Shopping Centre. Situated just minutes off of the Patricia Bay Highway, the location offers good business exposure in a highly-accessible and well trafficked area of Saanich.

Subject unit was fully renovated in 2022 and supports a variety of uses. Currently used as general office space, medical uses may also be supported as it has previously tenanted a successful dental practice.

889
Square
Feet

JUL 1
Available by

C-4
Saanich Zoning
Bylaw



New
Flooring



New Lighting
Throughout



Ample Natural
Light



Parking Lot



Central
Location



AVAILABLE UNIT

Unit 2 (Lower) - 811 Royal Oak Dr. 889 sq.ft.

Available as early as July 1, 2026.

LEASE TERMS

Net Rent	Additional Rent
Starting at: \$30.00	\$31.07

Amounts above are per square foot per annum. *Additional Rent is as estimated for 2026.*

The subject unit is available for a sublease to **May 31, 2030**. Possibility to enter into a direct lease with the Landlord, pending termination of existing tenancy.



ZONING

C-4 Zone - Office and Apartment Zone
District of Saanich

C-4 ZONING | SAANICH



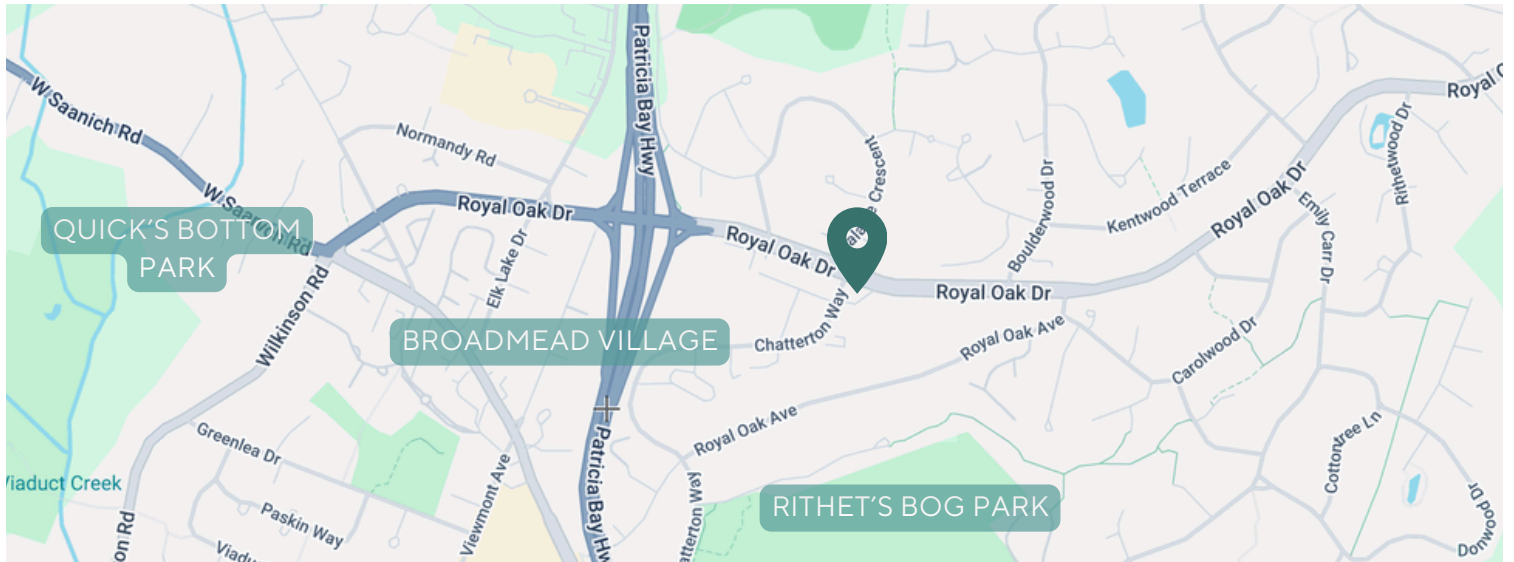
NEARBY

Other tenancies in the building include:

- TD Bank
- Infinity Law Corporation

Nearby businesses include:

- Thrifty Foods
- Royal Bank of Canada
- Romeo's Pizza
- Canadian Tire
- Starbucks
- Sleep Country



The information contained herein is obtained from sources believed to be accurate; however, Pemberton Holmes Ltd. and its agents assume no liability for its accuracy and all parties are advised to verify all information to their own satisfaction. Prices and terms are subject to change without notice. All measurements are approximate. Copyright Pemberton Holmes Ltd. 2026.

