

# FOR LEASE

1155 LOLA STREET

1155 Lola Street, Units 1A & 1B, Ottawa, ON K1K4C1



**JOHN ZINATI**  
+1(613)880.4106  
john@zinatirealty.com

**TANYA WOLFGRAM**  
+1(613)447.2205  
tanya@zinatirealty.com

92 CENTREPOINTE DRIVE • OTTAWA, ON K2G 6B1 • 613.853.4106 • ZINATIREALTY.COM

 **ZINATI**  
REALTY  
COMMERCIAL BROKERAGE



## OFFERING SUMMARY

Available Space:	9000 - 19,000 SF
Lease Rate:	\$16.00 SF/yr (NNN)
Additional Rent	approx. \$9.50 SF/yr

## PROPERTY OVERVIEW

Large mixed use office space opportunity in a high traffic area off of Coventry Road. The ground-level unit, consists of approximately 9000 SF of combined office space over ten dedicated offices, multiple executive suites, boardrooms and mixed-use areas. A large, central, open concept work area completes the north end of the unit. The lower level unit, has over sixteen separate installed offices, with many that would be suitable for patient intake areas. This unit is approximately 10,000 SF, and is complete with its own dedicated boardroom, storage space and roughed-in kitchenette. Both units have a reception and lobby at an accessible, elevator-serviced entrance, as well as spacious multi-stall washrooms. There is shared access to the loading dock at the northeast corner for both units, and plenty of on-site parking is available for employees and visitors.

## PROPERTY HIGHLIGHTS

- Immediate availability.
- Elevator accessible to both main and lower floors.
- 1 Shared access dock loading space in the rear of the building.
- Signage opportunity.
- General Mixed-use Zoning - GM6H(13.6).

### JOHN ZINATI

+1(613)880.4106

john@zinatirealty.com

### TANYA WOLFGRAM

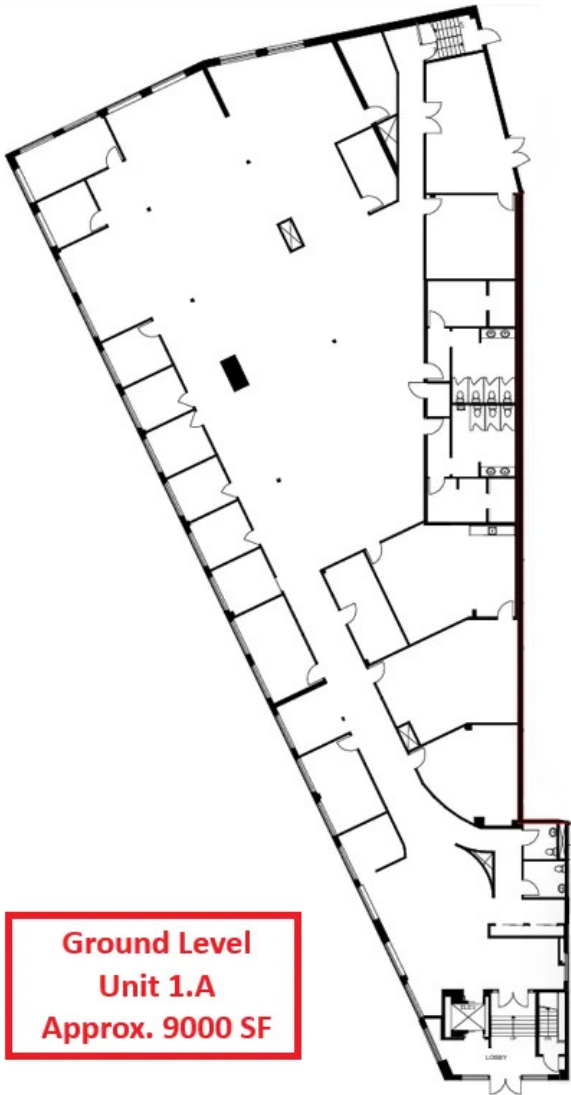
+1(613)447.2205

tanya@zinatirealty.com

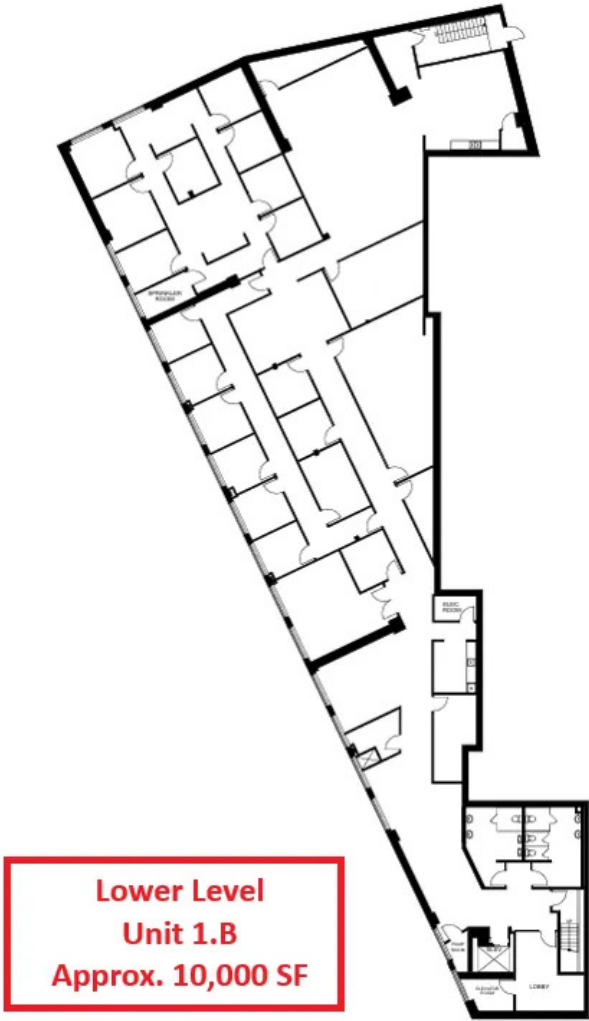
92 CENTREPOINTE DRIVE • OTTAWA, ON K2G 6B1 • 613.853.4106 • ZINATIREALTY.COM

**1155 LOLA STREET**  
1155 LOLA STREET, UNITS 1A & 1B, OTTAWA, ON K1K4C1

Floor Plans



**Ground Level**  
**Unit 1.A**  
**Approx. 9000 SF**



**Lower Level**  
**Unit 1.B**  
**Approx. 10,000 SF**

**JOHN ZINATI**

+1(613)880.4106

john@zinatirealty.com

**TANYA WOLFGRAM**

+1(613)447.2205

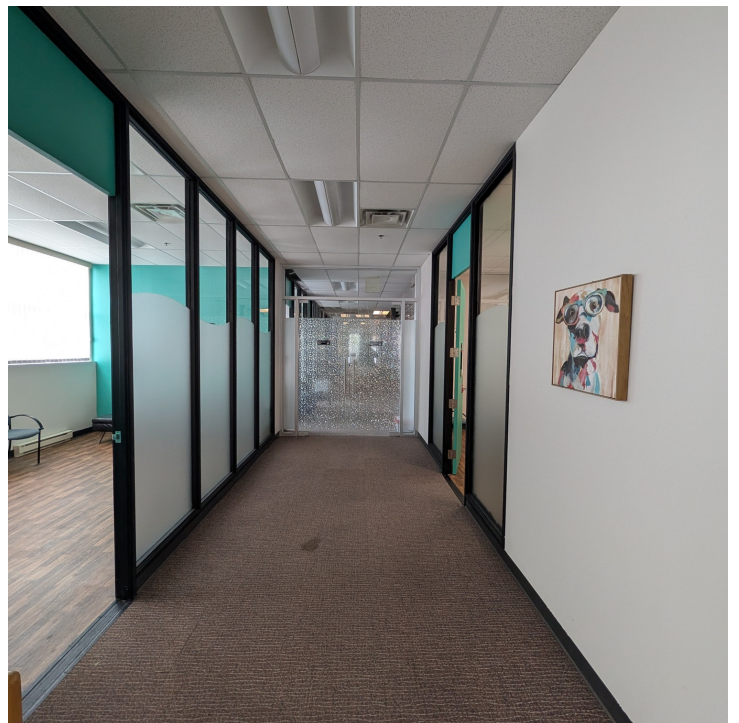
tanya@zinatirealty.com

92 CENTREPOINTE DRIVE • OTTAWA, ON K2G 6B1 • 613.853.4106 • ZINATIREALTY.COM



**1155 LOLA STREET**  
1155 LOLA STREET, UNITS 1A & 1B, OTTAWA, ON K1K4C1

Additional Photos



**JOHN ZINATI**  
+1(613)880.4106

john@zinatirealty.com

**TANYA WOLFGRAM**

+1(613)447.2205

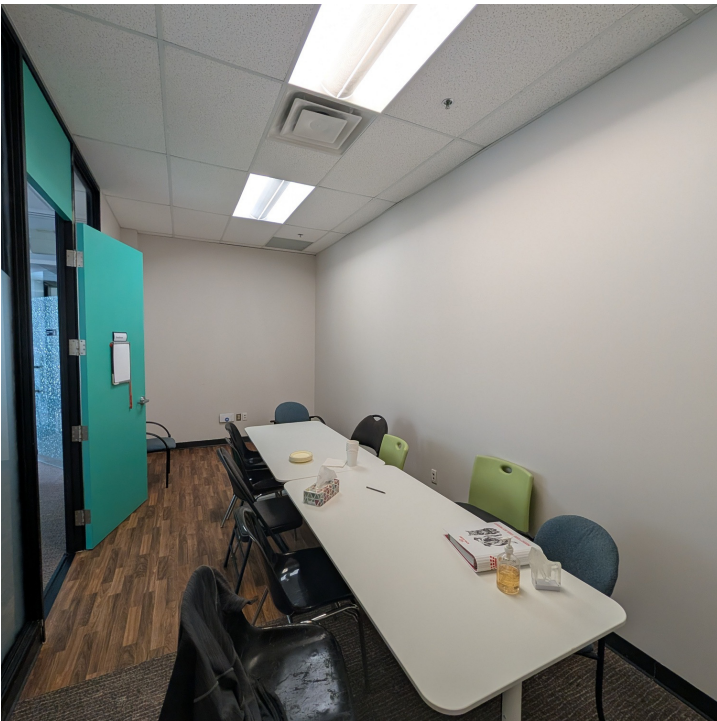
tanya@zinatirealty.com

92 CENTREPOINTE DRIVE • OTTAWA, ON K2G 6B1 • 613.853.4106 • ZINATIREALTY.COM

**ZINATI**  
REALTY  
COMMERCIAL BROKERAGE

**1155 LOLA STREET**  
1155 LOLA STREET, UNITS 1A & 1B, OTTAWA, ON K1K4C1

Additional Photos



**JOHN ZINATI**  
+1(613)880.4106

john@zinatirealty.com

**TANYA WOLFGRAM**  
+1(613)447.2205

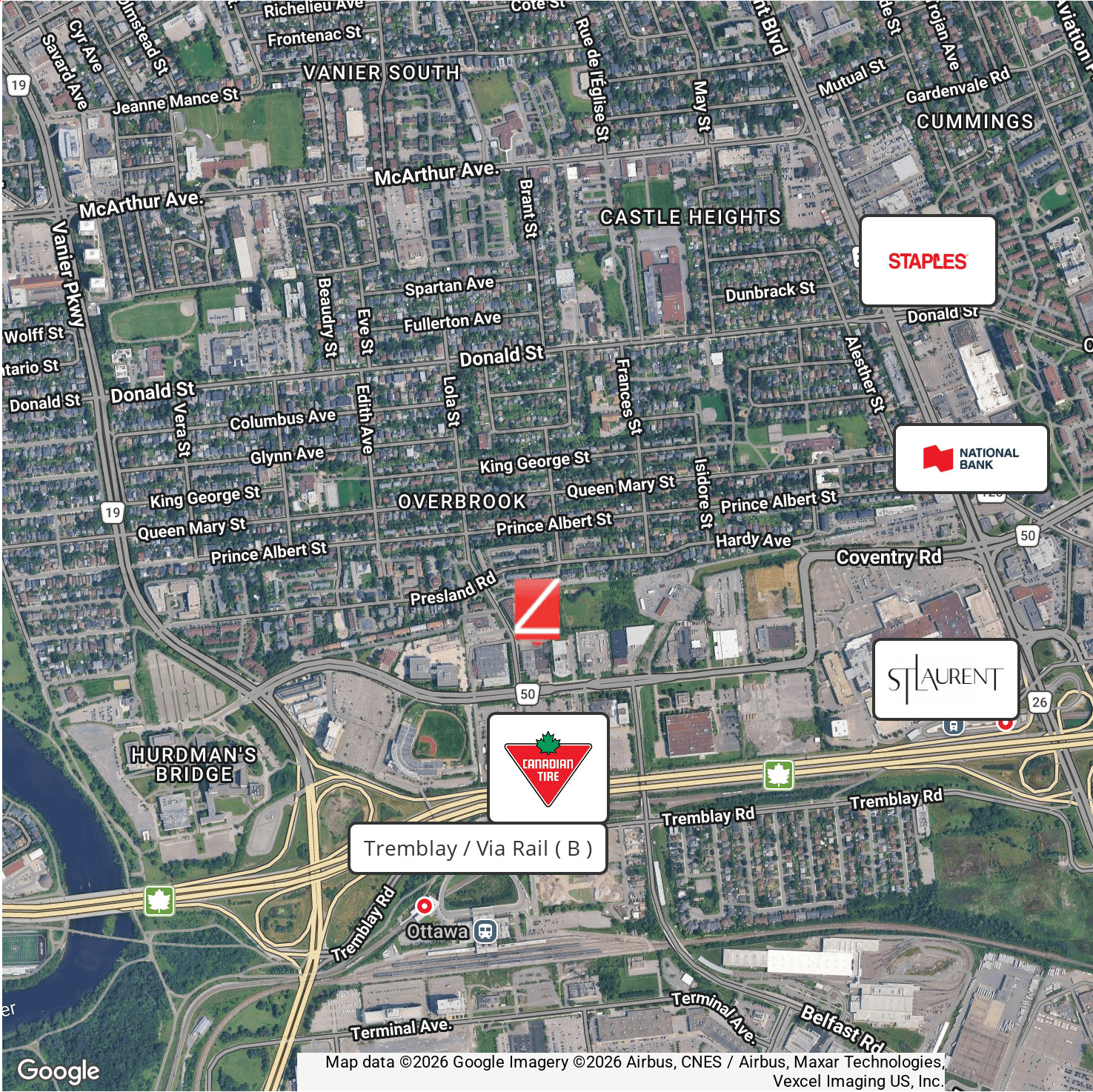
tanya@zinatirealty.com

92 CENTREPOINTE DRIVE • OTTAWA, ON K2G 6B1 • 613.853.4106 • ZINATIREALTY.COM

# 1155 LOLA STREET

1155 LOLA STREET, UNITS 1A & 1B, OTTAWA, ON K1K4C1

Retailer Map



**JOHN ZINATI**

+1(613)880.4106

john@zinatirealty.com

**TANYA WOLFGRAM**

+1(613)447.2205

tanya@zinatirealty.com

92 CENTREPOINTE DRIVE • OTTAWA, ON K2G 6B1 • 613.853.4106 • ZINATIREALTY.COM

