



Retail Space **FOR LEASE**

203 Bank Street,
Ottawa



Integrity. Dedication. Professionalism

District Realty
Corporation Brokerage
districtrealty.com

The information as herewith enclosed has been obtained from sources we believe to be reliable, but we make no representation or warranties, express or implied, as to the accuracy of the information. All references to square footage and other information contained herein are approximate and subject to change. Prospective tenants shall not construe the information as legal advice. All properties are subject to change or withdrawal without notice.

203 Bank Street

Ottawa

Price
\$25.00/sf
OPC
\$15.50/sf



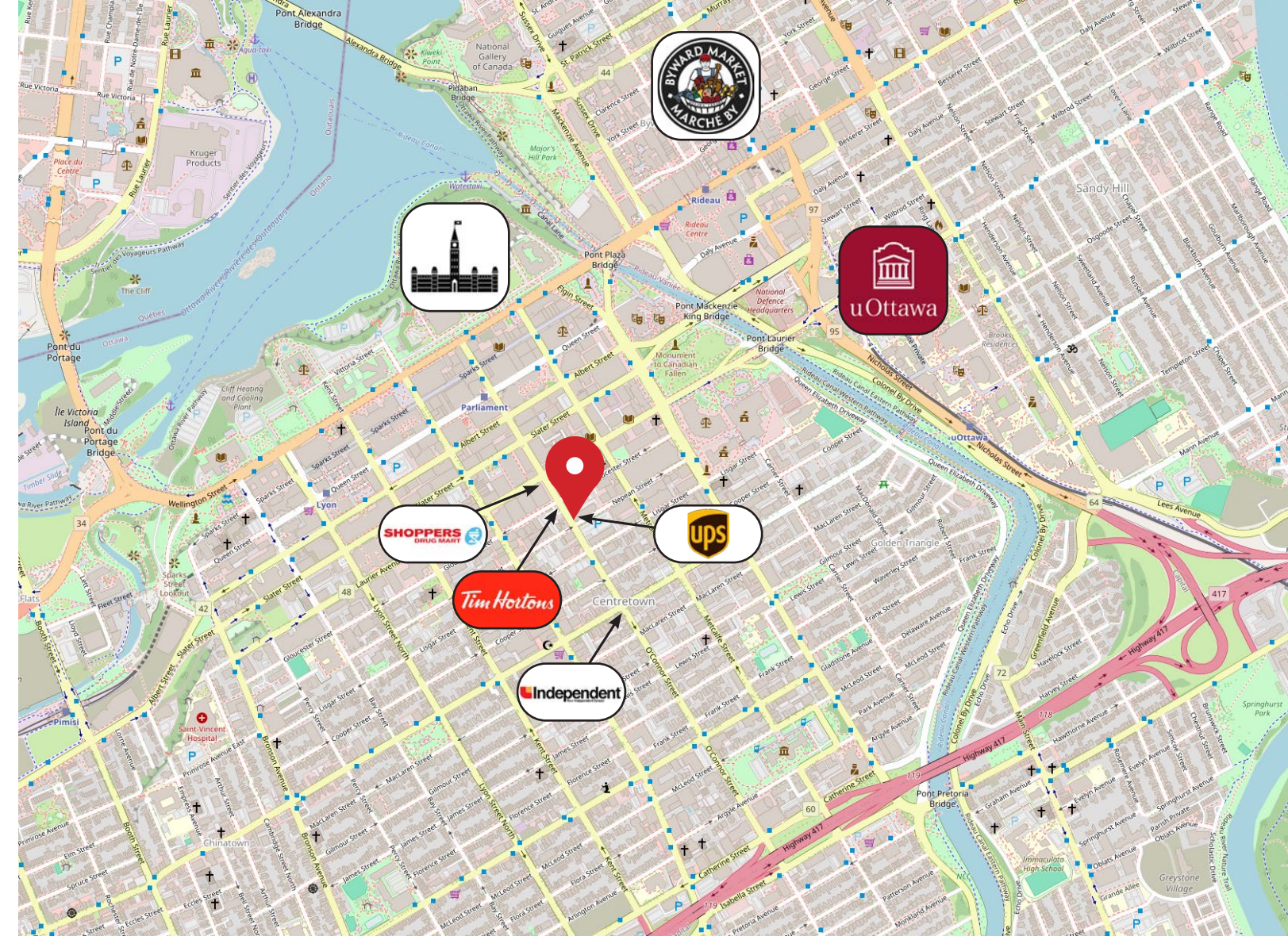
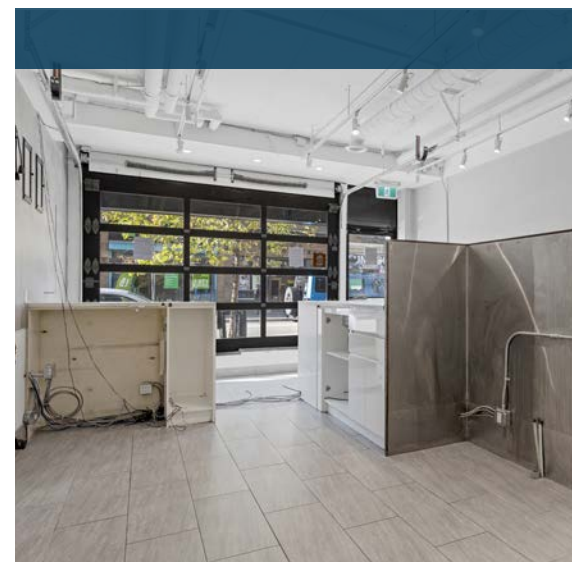
Salient Facts Property

- Unit** 1,840 sf
- Zoning** TM H(19)
- High Ceiling & large display windows**
- Currently fit for a tea shop**
- Suitable to refit for restaurant use**

Prime Retail Space for Lease

Exceptional retail opportunity in the heart of downtown Ottawa. Featuring 19' of frontage on bustling Bank Street, a major north-south corridor with steady vehicle and pedestrian traffic.

Currently built out for a tea shop, the space is ideal for restaurants or a wide range of retail concepts. Located just minutes from Parliament Hill, with a surrounding population of 132,000+ within 3 km.



Highlights

- Prominent Bank Street exposure with heavy daily foot traffic
- Suitable for food service or retail uses
- Easy access to HWY 417
- Public transit at your doorstep: nearby bus stops and a short walk to Parliament LRT Station

Position your business in one of Ottawa's most vibrant downtown corridors!



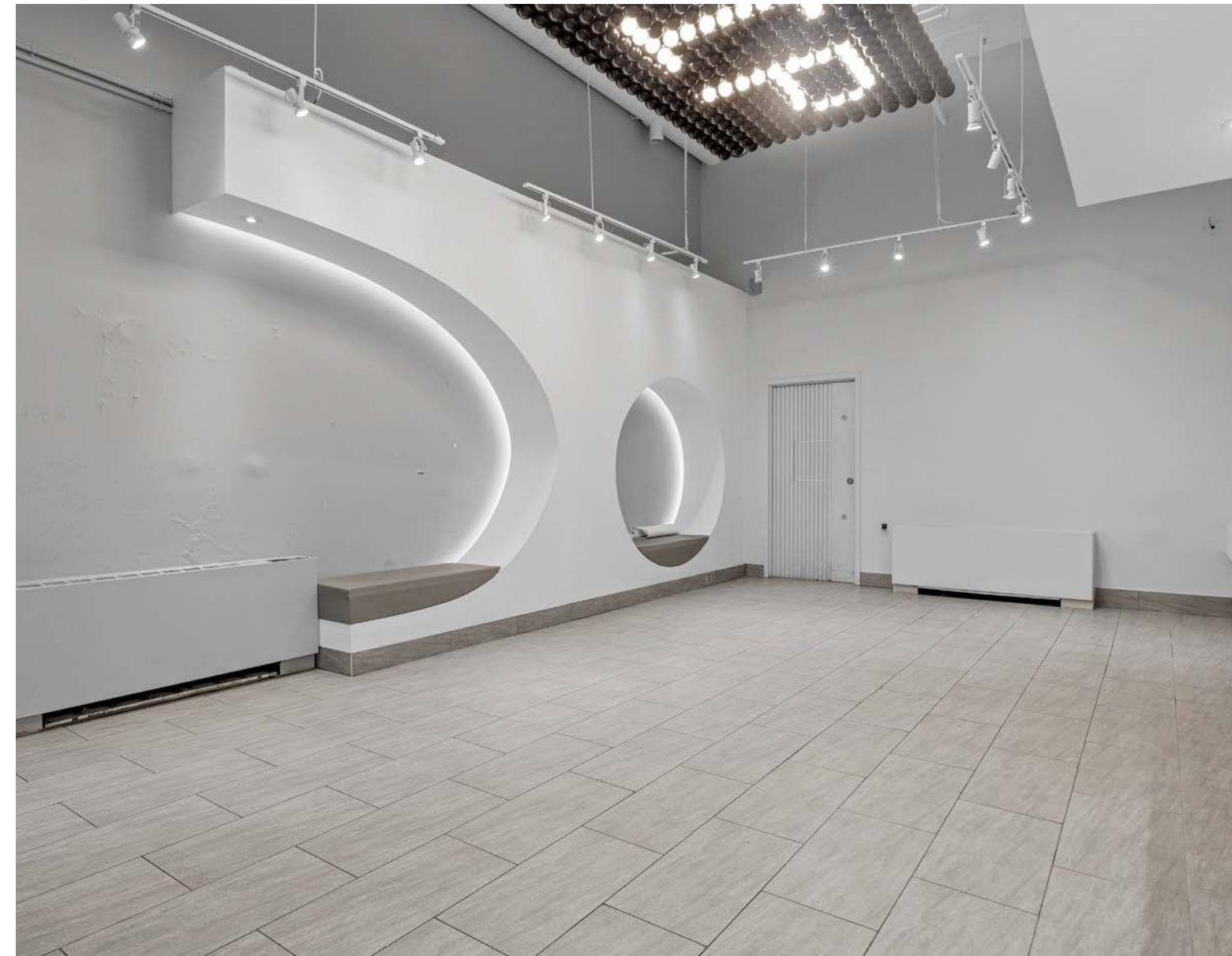
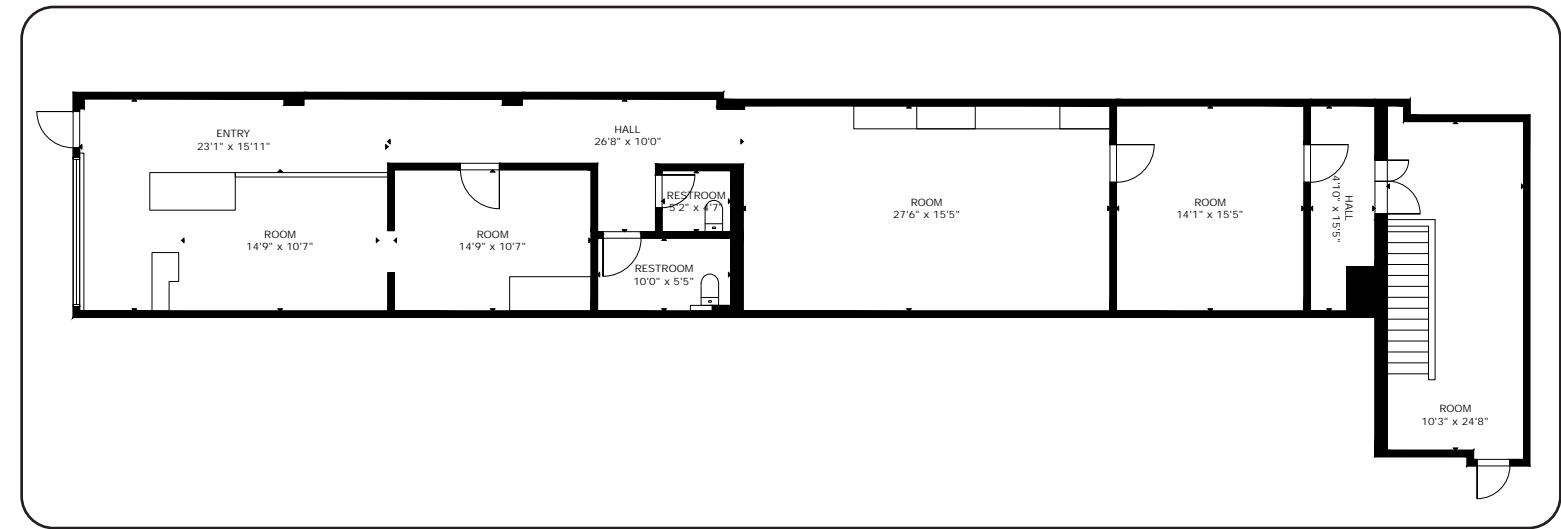
CONTACT

613-759-8383
leasing@districtrealty.com

District Realty Corporation Brokerage
districtrealty.com

Jason Shinder, Broker of Record
CEO

Charles Mirsky, Broker
COO - Brokerage Services



CONTACT

613-759-8383
leasing@districtrealty.com

District Realty Corporation Brokerage
districtrealty.com

Jason Shinder, Broker of Record
CEO

Charles Mirsky, Broker
COO - Brokerage Services

Demographic Data

Age Distribution

The neighbourhood is overwhelmingly working age, with over 83% of the population under 65, reinforcing its strong tenant base of young professionals and active adults.

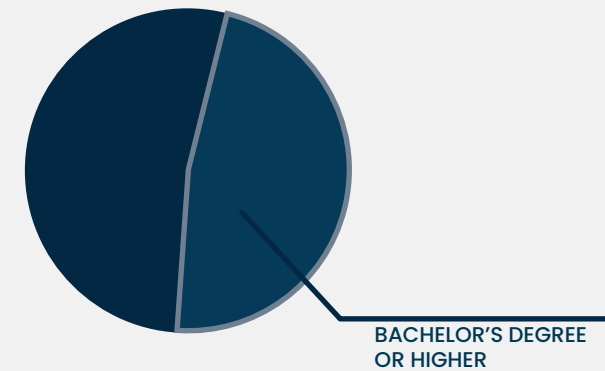
MEDIAN AGE IS

37



Educational Attainment

Over 150,000 residents hold a Bachelor's Degree or higher within a 3 km radius.



Income Levels

With 35% earning under \$40,000, the average household income is:

\$91K

reflecting a balanced urban mix of students, early-career professionals, and established earners—supporting both value-oriented concepts and mid-market to premium retail, dining, and service offerings.

Labor Force Participation

69%

within a 3 km radius, a highly active working demographic with most employed in government, social sciences, education, business & finance, and sales & services.

Household Characteristics

One or two-person households dominate making up over 82%, with household growth expected to reach

23.05% BY 2033



This is a dense, fast-growing customer base that values convenience and walkable retail—ideal for businesses driven by repeat, day-to-day demand.

Population Growth

The population within a 3 km radius is projected to reach 157,039 by 2033.

18.69% GROWTH BY 2033

CONTACT

613-759-8383
leasing@districtrealty.com


District Realty Corporation Brokerage
districtrealty.com


Jason Shinder, Broker of Record
CEO

Charles Mirsky, Broker
COO - Brokerage Services



20 James Street, Suite 100
Ottawa, ON., K2P 0T6

 613.759.8383

 LEASING@DISTRICTREALTY.COM