

Office Space

2310 St Laurent Blvd

OTTAWA, ONTARIO



QUBE PROPERTIES LTD.

REAL ESTATE BROKERAGE
255 MICHAEL COWPLAND DRIVE
OTTAWA ON K2M 0M5

QU
BE

2310 St Laurent Boulevard

ABOUT THE BUILDING

- Located in the heart of the **St. Laurent Business Park**, along St Laurent Blvd.
- 2310 St. Laurent Boulevard offers well-maintained fully built-out office units featuring bright, professional space with flexible layout options.
- The building is just **5 minutes from Highway 417** on/off ramps at Walkley Road and benefits from direct access to public transit stations along St Laurent Boulevard.
- The property is also located close to **many retail amenities** and restaurants like Metro, Wendy's, Boston Pizza, Tim Hortons and more.

\$30.00

Gross Rental Rate

ADDITIONAL INFORMATION



Utilities included in Gross Rent



Turnkey Suites Available



On-site Parking for Tenants



Space ranging from
1,100 - 3,575 SF

SAMIZ SUNESARA
SALES REPRESENTATIVE
(613) 413 2178
samiz@qubeproperties.com

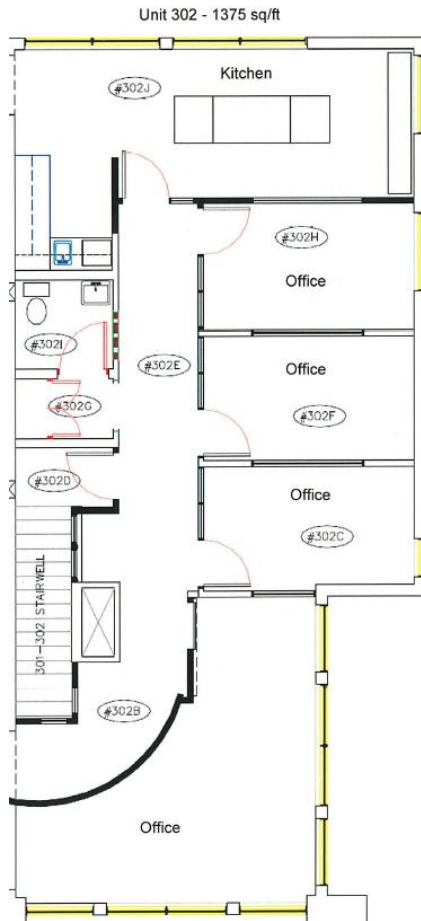
BEN SHERMAN
BROKER, PRINCIPAL
(613) 513 4759
ben@qubeproperties.com

QUBE PROPERTIES LTD.
REAL ESTATE BROKERAGE
255 MICHAEL COWPLAND DRIVE
OTTAWA ON K2M 0M5

QU
BE

2310 St Laurent Boulevard

FLOOR PLAN



AVAILABILITY DETAILS

Suite	302
Size	1,375 Square Feet
Gross Rent	\$30.00 PSF
Comments	Bright office accessible through sperate entrance, space is currently fully builtout with kitchenette, 4 offices and in-suite washrooms.

SAMIZ SUNESARA
SALES REPRESENTATIVE
(613) 413 2178
samiz@qubeproperties.com

BEN SHERMAN
BROKER, PRINCIPAL
(613) 513 4759
ben@qubeproperties.com

QUBE PROPERTIES LTD.
REAL ESTATE BROKERAGE
255 MICHAEL COWPLANDDRIVE
OTTAWA ON K2M 0M5

**QU
BE**

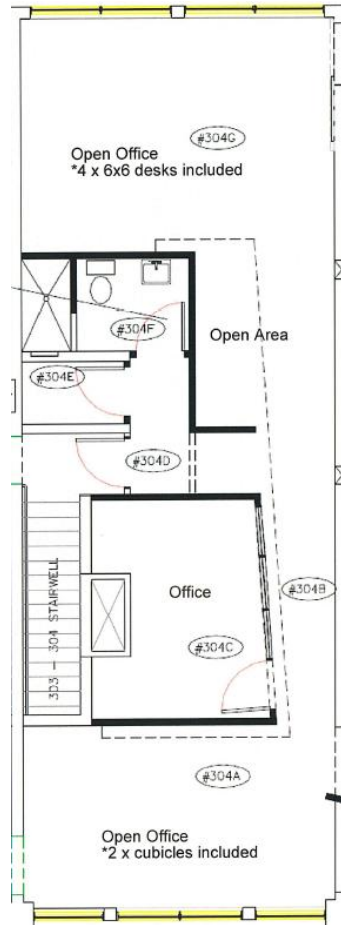


2310 ST LARJENT BLVD- SUITE 302



2310 St Laurent Boulevard

FLOOR PLAN



AVAILABILITY DETAILS

Suite	304
Size	1,100 Square Feet
Gross Rent	\$30.00 PSF
Comments	Bright office accessible through separate entrance, open concept office space current builtout with 1 office and in-suite washroom. Unit includes furniture cubicles and desks.

SAMIZ SUNESARA
SALES REPRESENTATIVE
(613) 413 2178
samiz@qubeproperties.com

BEN SHERMAN
BROKER, PRINCIPAL
(613) 513 4759
ben@qubeproperties.com

QUBE PROPERTIES LTD.
REAL ESTATE BROKERAGE
255 MICHAEL COWPLAND DRIVE
OTTAWA ON K2M 0M5





2310 ST LARJENT BLVD- SUITE 304

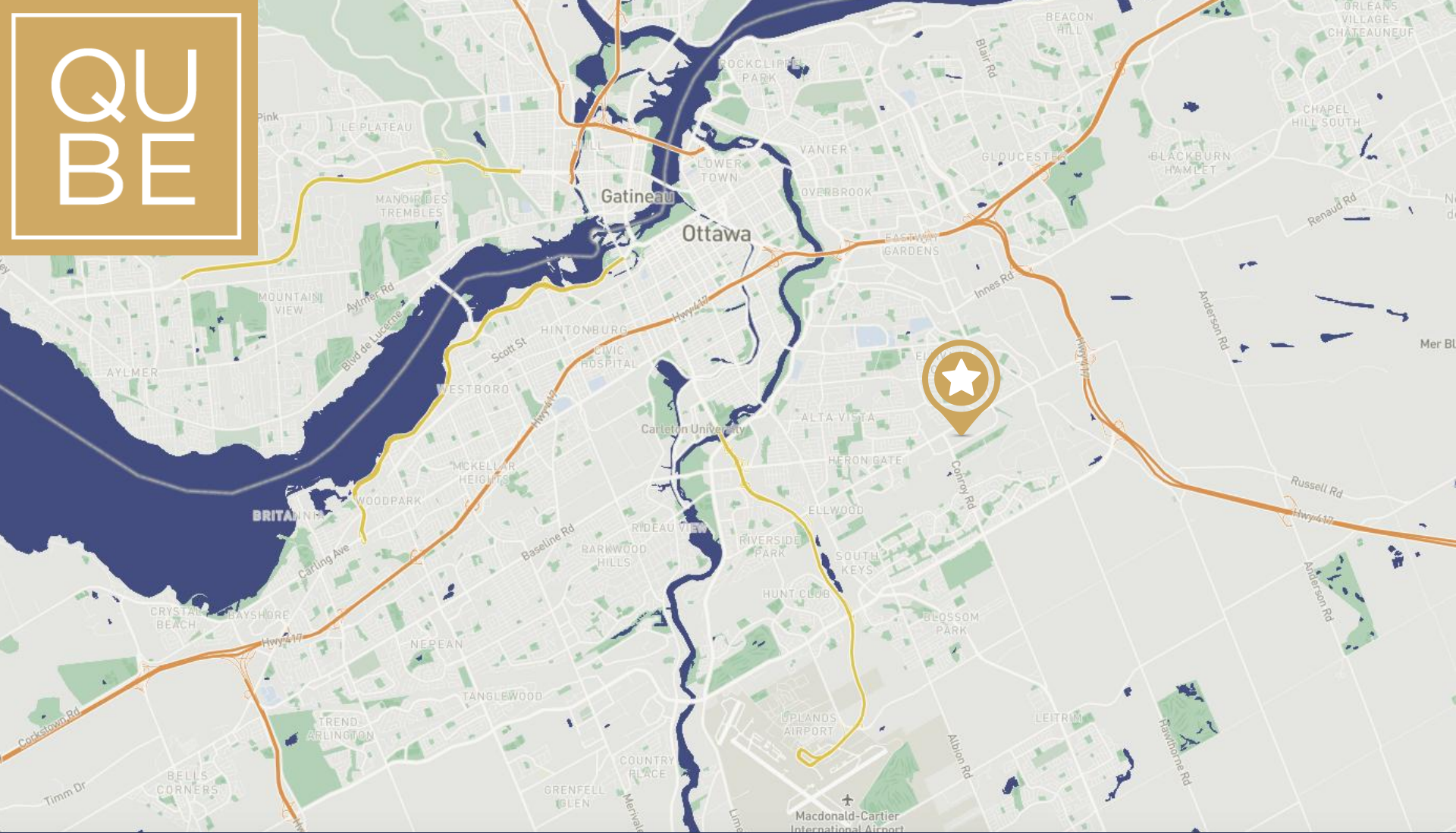




2310 ST LARJENT BLVD- SUITE 306



QUBE



SAMIZ SUNESARA

SALES REPRESENTATIVE

(613) 413 2178

samiz@qubeproperties.com

BEN SHERMAN

BROKER, PRINCIPAL

(613) 513 4759

ben@qubeproperties.com

QUBE PROPERTIES

QUBE PROPERTIES LTD.

REAL ESTATE BROKERAGE
255 MICHAEL COWPLAND DRIVE
OTTAWA ON K2M 0M5

This disclaimer shall apply to Qube Properties Ltd, Real Estate Brokerage, and to all other divisions of the Corporation, to include all employees and independent contractors ("Qube"). The information set out herein, including, without limitation, any projections, images, opinions, assumptions and estimates obtained from third parties (the "Information") has not been verified by Qube, and Qube does not represent, warrant or guarantee the accuracy, correctness and completeness of the Information. Qube does not accept or assume any responsibility or liability, direct or consequential, for the Information or the recipient's reliance upon the Information. The recipient of the Information should take such steps as the recipient may deem necessary to verify the Information prior to placing any reliance upon the Information.