

**AVISON
YOUNG**

For Lease

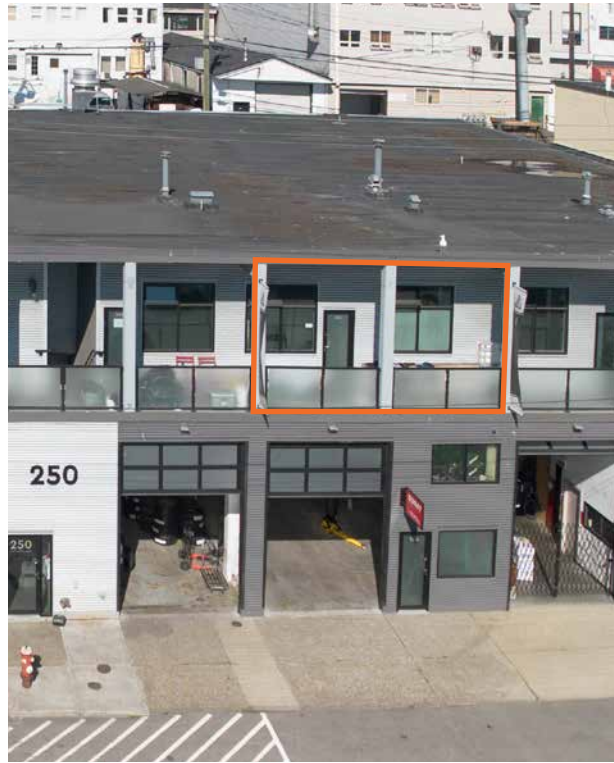
#206 - 250 East Esplanade
North Vancouver, BC



Second level industrial unit on East Esplanade with grade level loading

Ian Whitchelo*, Principal
604 647 5095
ian.whitchelo@avisonyoung.com
**Ian Whitchelo Personal Real Estate Corporation*

Rory Thies, Associate
604 243 9591
rory.thies@avisonyoung.com



Opportunity

Conveniently located industrial unit available for lease on East Esplanade in North Vancouver. This second-floor space features grade level loading access at the rear and stunning views overlooking Downtown Vancouver.

Location

250 East Esplanade is situated in a prime location on the outskirts of the Shipyards District of North Vancouver with easy access to Downtown Vancouver via nearby transit options such as the SeaBus. The building is close to the Port of Vancouver, one of North America's busiest ports, and within proximity to major transport routes such as the Low-Level Road and Highway 1. This North Vancouver location offers access to both the city centre and industrial hubs, making it ideal of those looking for seamless connections to both suppliers and customers.

Property highlights

- Grade level loading via back lane
- Parking directly behind unit
- Recently upgraded building exterior
- Dedicated office space at the front of the unit
- Private washroom inside unit

Area highlights

- Lonsdale Quay Market and Shipyards District nearby
- Easy access to Downtown Vancouver via the SeaBus
- Abundant restaurants and cafes in the immediate area
- Major transport routes nearby

Property details

UNIT SIZE
1,848 sf

LEASE RATE
\$23.00 psf per annum

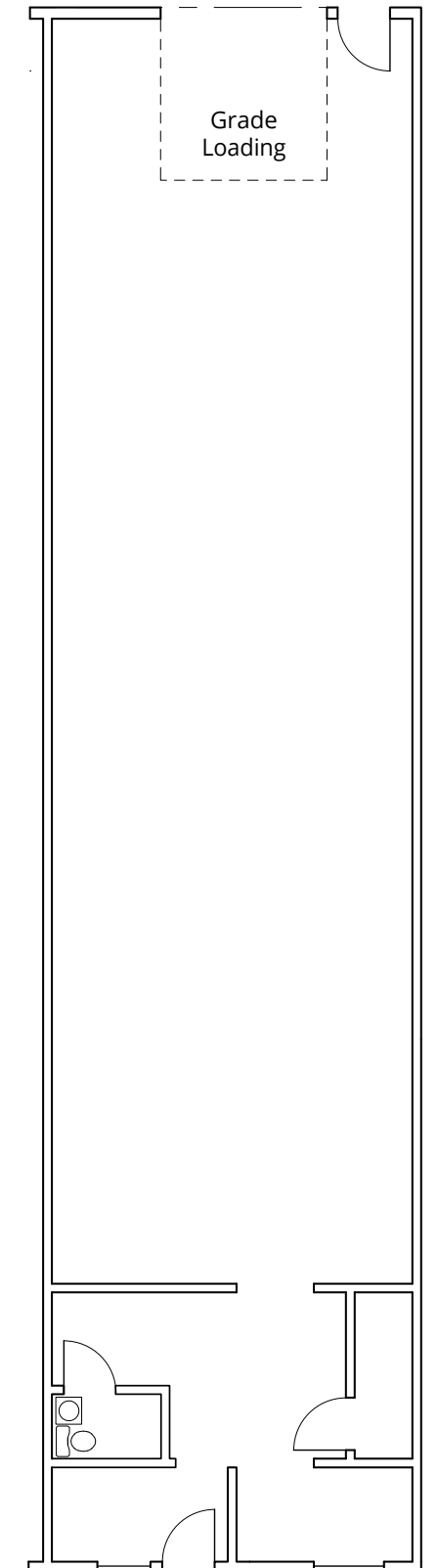
ADDITIONAL RENT (2026 ESTIMATE)
\$9.22 per square foot per annum

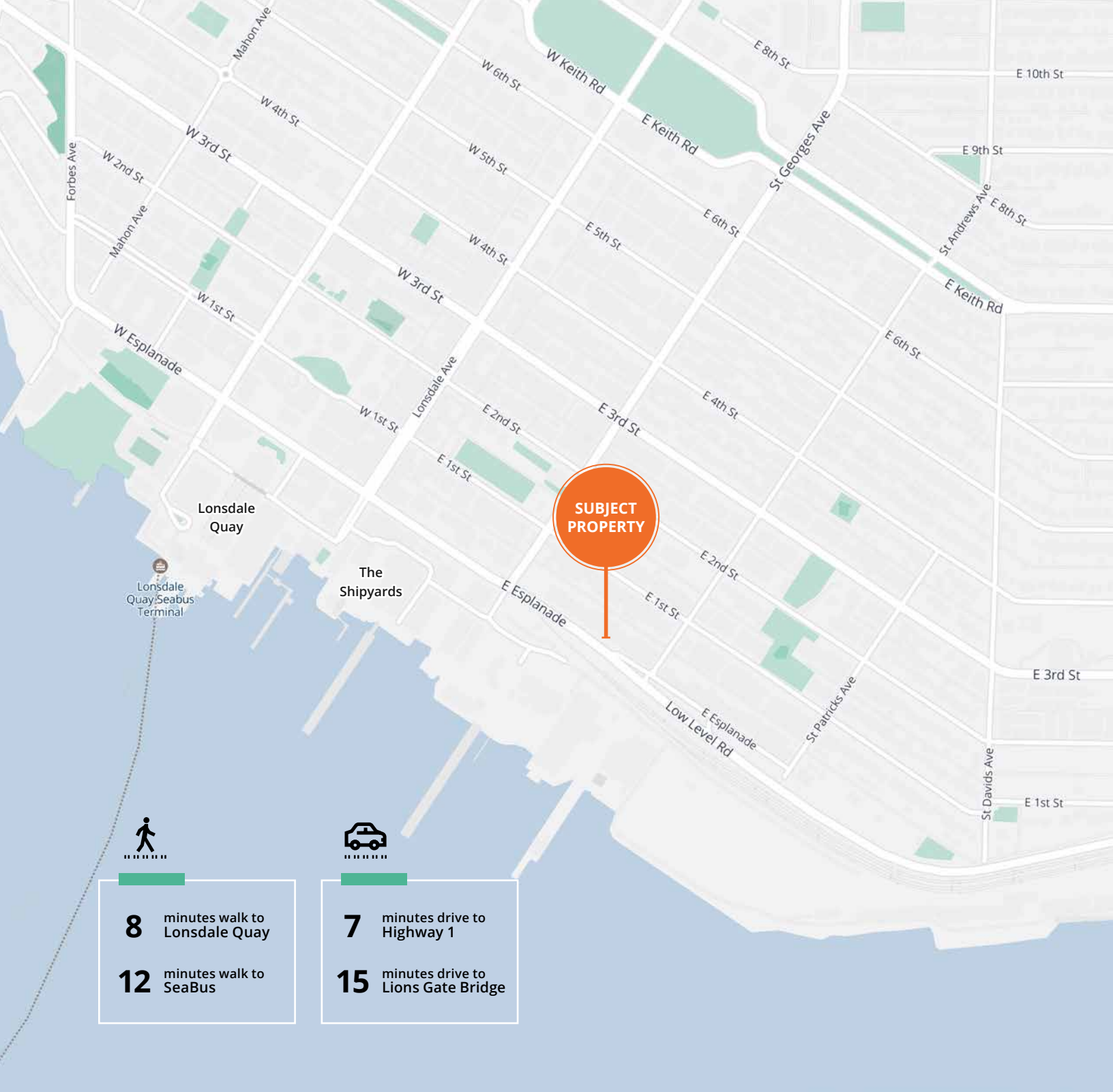
AVAILABILITY
September 1, 2026

ZONING
M-4 Industrial zone



Floorplan





8 minutes walk to Lonsdale Quay

12 minutes walk to SeaBus



7 minutes drive to Highway 1

15 minutes drive to Lions Gate Bridge

Contact for more information

Ian Whitchelo*, Principal
604 647 5095
ian.whitchelo@avisonyoung.com

**Ian Whitchelo Personal Real Estate Corporation*

Rory Thies, Associate
604 243 9591
rory.thies@avisonyoung.com

#2900-1055 West Georgia Street
P.O. Box 11109 Royal Centre
Vancouver, BC V6E 3P3, Canada

avisonyoung.ca

