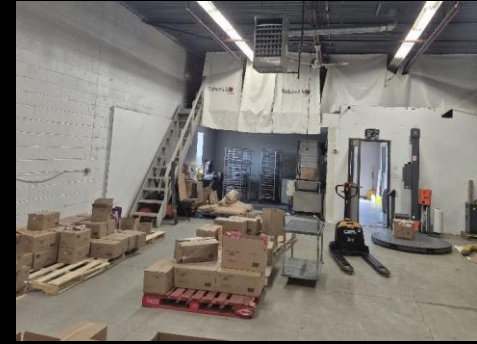
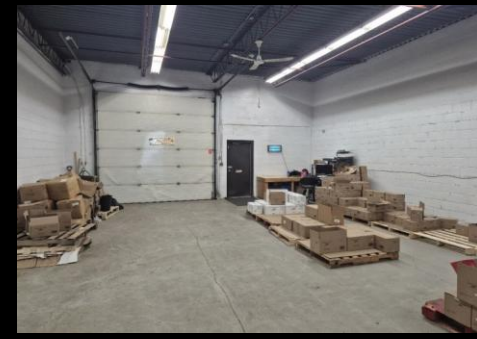


Industrial unit

FOR LEASE

53 Cowansview Rd, Unit J, Cambridge



AVAILABILITY
2,170 Sq Ft

LEASE RATES
\$12.95 /Sq Ft net

ADDITIONAL RENT
\$4.25 Sq Ft + *Utilities*

ZONING
M-3

OCCUPANCY
IMMEDIATE

FEATURES

- * 1,520 Sq. ft industrial unit including 650 Sq. Ft of office.
- * Good location with easy access to Hwy 401, Hwy 24 and Cambridge industrial parks.
- * 12'x12' Drive in door.
- * M-3 Zoning allows for many uses, ideal for sales/service user, manufacture, warehouse etc.
- * Free on-site parking.

Peter Kruschen
Sales Representative
peter@coupalmarkou.com
519-742-7000 x 106

Coupal Markou
Commercial Real Estate Inc.
150 King Street South
Waterloo, Ontario N2J 1P6
Office 519-742-7000
Fax 519-742-7070

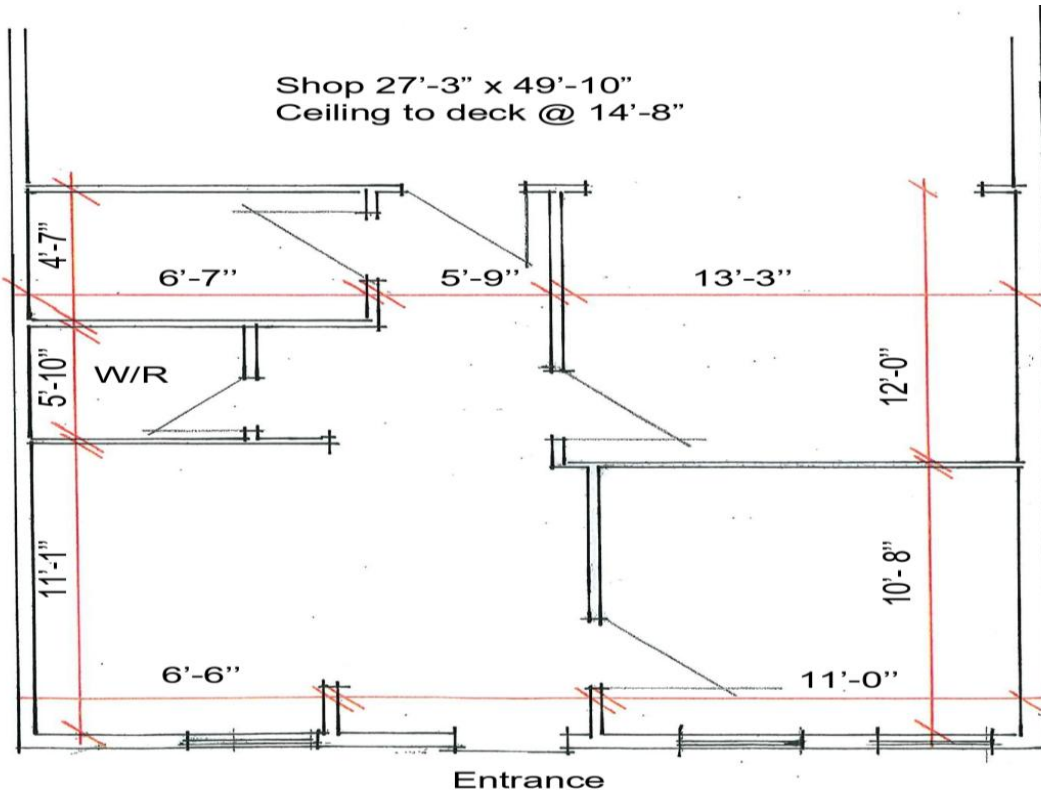


www.coupalmarkou.com

Industrial unit

FOR LEASE

53 Cowansview Rd, Unit J, Cambridge



Peter Kruschen
Sales Representative
peter@coupalmarkou.com
519-742-7000 x 106

Coupal Markou
Commercial Real Estate Inc.
150 King Street South
Waterloo, Ontario N2J 1P6
Office 519-742-7000
Fax 519-742-7070



www.coupalmarkou.com

This disclaimer shall apply to Coupal Markou Commercial Real Estate Inc., Brokerage, to include all employees and independent contractors. The information set out herein is for advertising purposes, and any images, assumptions, estimates and property details have been obtained from sources deemed to be reliable. No warranty or representation is made as to its accuracy, correctness and completeness of the information, being subject to errors, omissions, conditions, prior sale / lease, withdrawal or other changes without notice. The recipient of the information should conduct its own inquiries and investigations prior to placing any reliance upon the information. MLS