



**NAI Commercial**

**2,862 SF**

**Unit 250 - 605 Robson Street, Vancouver, BC**

**FOR LEASE**

Currently improved with large open space, 1 internal office, 1 window office, large storage room and kitchenette. The Landlord will consider a reconfiguration of the space to suit the Tenant's needs. The Premises has exclusive use of an approximately 800 square foot patio.

**Roy Gibbs, LL.B**

Personal Real Estate Corporation  
Commercial Leasing & Sales  
778 834 4050  
rgibbs@naicommercial.ca

**Chris Oteman, B.Sc.**

Commercial Leasing & Sales  
604 828 0535  
coteman@naicommercial.ca

**NAI Commercial**

1075 W Georgia St, Suite 1300  
Vancouver, BC V6E 3C9  
+1 604 683 7535  
naicommercial.ca



# #250 - 605 Robson Street

Vancouver, BC

## Premises

Currently improved with large open space, 1 internal office, 1 window office, large storage room and kitchenette.

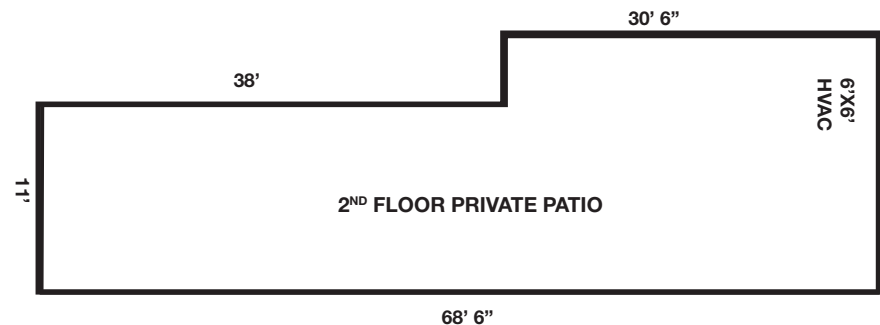
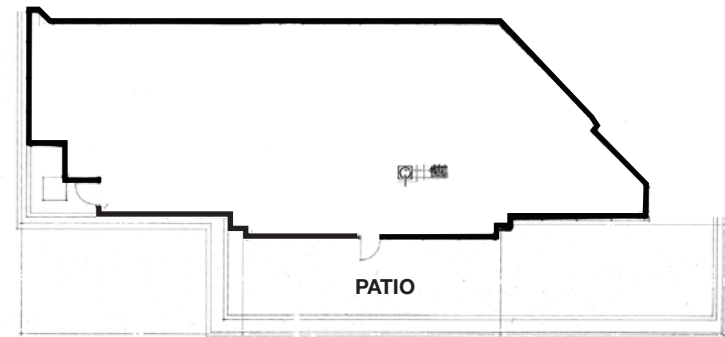
## Building Details

605 Robson Street is one block from Vancouver City Centre Skytrain Station and provides abundant visitor parking (available at half hour, hourly, or full day rates).

The building also provides abundant random and reserved tenant parking, secure bicycle storage, and end of trip facilities.

On-site ownership and management provides first-class service to tenants.

## Floor Plan



## Property Details

**Unit Size**  
2,862 SF

**Additional Rent**  
\$22.62/SF (2026)

**Zoning**  
DD - Downtown District

**Availability**  
Immediately

**Net Rent**  
\$27.00/SF



OFFICE VIEW



NEIGHBORING RESTAURANTS



**WITHIN 5-MIN WALKING DISTANCE**

- Five Guys
- Meat & Bread
- Blenz Coffee
- Aladdin Café
- Guu Japanese
- Bahar Bakery & Cafe
- H-Mart
- Cafe Monet Bakery
- Tractor Foods
- JINYA Ramen
- JAPADOG
- CIBC Bank
- The Ox Pub
- Chipotle Mexican
- Jollibee
- Starbucks
- Tim Hortons
- Glowbal
- London Drugs
- Pacific Centre
- Hudson's Bay
- Popeyes
- McDonald's
- Dublin Calling Bar
- Staples
- Fable Diner & Bar
- Cafe Medina
- Viet Sub Vietnamese
- Falafel King
- Paramount Fine Foods
- Gong Cha
- Taf's Cafe
- The Fountainhead Pub

**Roy Gibbs, LL.B.**

Personal Real Estate Corporation  
Commercial Leasing & Sales  
778 834 4050  
rgibbs@naicommercial.ca

**Chris Oteman, B.Sc.**

Commercial Leasing & Sales  
604 828 0535  
coteman@naicommercial.ca

**NAI Commercial**

1075 W Georgia St, Suite 1300, Vancouver, BC V6E 3C9  
+1 604 683 7535 | [naicommercial.ca](http://naicommercial.ca)

No warranty or representation, express or implied, is made as to the accuracy of the information contained herein, and the same is submitted subject to errors, omissions, change of price, rental or other conditions, prior sale, lease or financing, or withdrawal without notice, and of any special listing conditions imposed by our principals no warranties or representations are made as to the condition of the property or any hazards contained therein are any to be implied. Aerial image(s) courtesy of Google, Landsat/Copernicus