



SUBJECT  
PROPERTY

**FOR LEASE**

**15791 MARINE DRIVE**

White Rock, BC

**Prime Beachfront Location Available!**

**Razi Mohamed\***

Vice President  
778.879.9407  
Razi.Mohamed@macdonaldcommercial.com

\* Personal Real Estate Corporation

**Jas Chhina**

778.881.1349  
Jas.Chhina@macdonaldcommercial.com

**Macdonald**  
**COMMERCIAL**

— member of —  
**CORFAC**  
INTERNATIONAL

# 15791 MARINE DRIVE

White Rock, BC

Unlock the potential of this unparalleled beachfront location! Whether you're an established restaurateur or a newcomer to the industry, this prime spot offers the perfect ambiance, foot traffic, and scenic backdrop to make your restaurant a destination for locals and tourists alike.



# SALIENT DETAILS

## ADDRESS

15791 Marine Drive, White Rock, BC

## TOTAL SIZE

2,500 sq. ft

## LEASE DURATION

3 TO 5 Years

## RENT

42.86 PSF + 14 NNN

## ADDITIONAL COSTS

E.g., utilities, maintenance fees, property taxes, insurance, etc.

# HIGHLIGHTS

**LOCATION:** Situated across East beach, this restaurant provides breathtaking views of the ocean, offering diners a one-of-a-kind beachside experience.

**TURNKEY SETUP:** The space is move-in ready, with minimal investment needed to start operating. Take advantage of existing high-quality fixtures. This is a space lease for space only and purchase of all chattels /equipment purchase will need to be discussed with landlord.

**SIZE:** Cozy well kept dining areas, a modern kitchen and full service kitchen—plenty of room to serve and impress guests.

**AMPLE FOOT TRAFFIC:** Located in a high-traffic area frequented by Beachgoers, Diners, and Tourists.

**PARKING & ACCESSIBILITY:** Convenient parking options and easy accessibility make this restaurant a prime destination.

**PROXIMITY TO ATTRACTIONS:** Close to hotel, other beach restaurants, and popular tourist spots, maximizing your potential customer base visiting the East Beach.

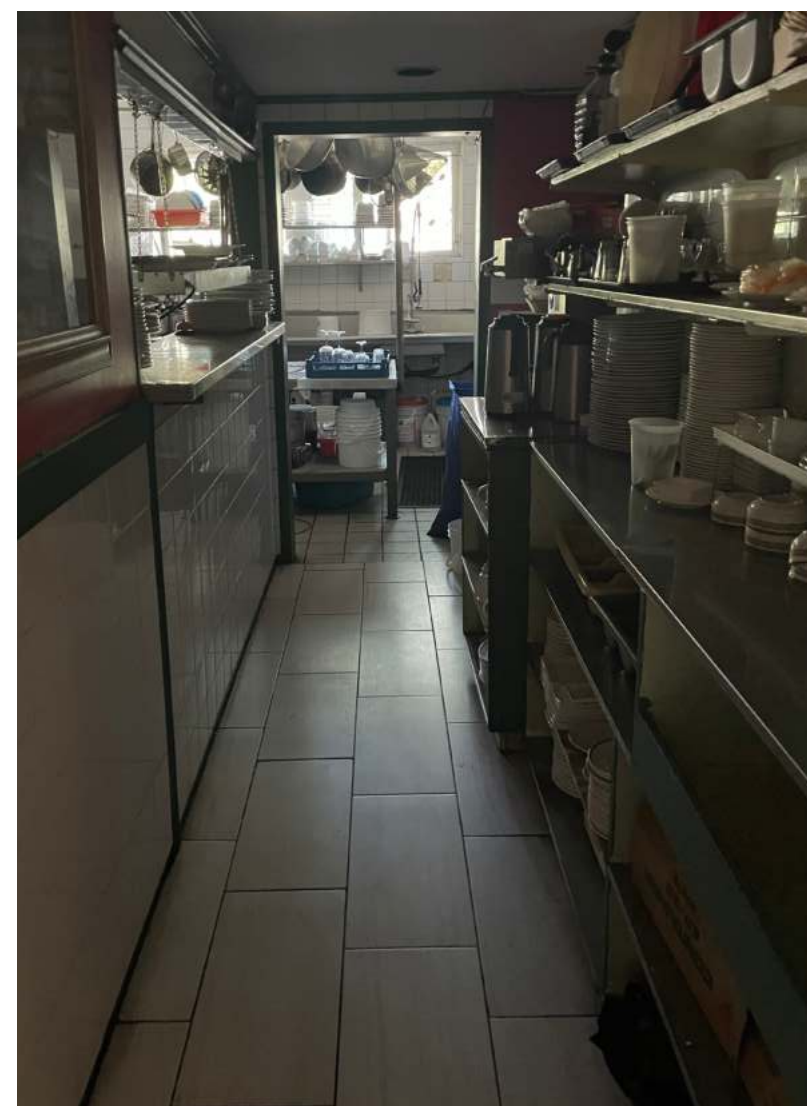


# KEY FEATURES

- » Canopy = 15ft
- » Walk-in Cooler = 7 ft by 4
- » Walk-in Freezer = 4 ft by 5ft
- » Ceiling height 9 ft
- » Full Bar = 10 ft
- » Seating = 100
- » Fully equipped kitchen with modern appliances
- » Bar area perfect for evening cocktails by the sea
- » Indoor Seating only, Check with the municipality for patio approval

For more information or to schedule a private tour, please contact Listing Agents.







# AMENITIES

## ● SHOPPING & SERVICES

- 1. Washington Avenue Grill
- 2. Ocean Promenade Hotel
- 3. Leieve Tea
- 4. Montgomery's Cottage Lunch
- 5. Zapoteca
- 6. Roots of Punjab Bar & Restaurant
- 7. Dock's Fish and Chips
- 8. Maya's Ice Cream
- 9. Uli's Restaurant
- 10. White Rock Museum & Archives

## ● PARKS

- A. Semiahmoo Park
- B. East Beach
- C. The White Rock
- D. White Rock Pier

**Razi Mohamed\***  
 Vice President  
 778.879.9407  
 Razi.Mohamed@macdonaldcommercial.com

**Jas Chhina**  
 778.881.1349  
 Jas.Chhina@macdonaldcommercial.com

**Macdonald Commercial R.E.S. Ltd.**  
 1827 W 5th Ave, Vancouver, BC V6J 1P5  
 www.macdonaldcommercial.com

**Macdonald**  
**COMMERCIAL**

Although this information has been received from sources deemed reliable, we assume no responsibility for its accuracy, and without offering advice, make this submission subject to prior sale or lease, change in price or terms and withdrawal without notice.

\* Personal Real Estate Corporation