



Newly renovated freestanding industrial building

- 41,349 sf building on 2.87 acres in northwest Edmonton
- 10,658 sf of office and showroom space across two floors
- LED lighting throughout the warehouse
- Fully fenced asphalt yard & marshalling area.
- Well located with close proximity to 149 Street and St. Albert Trail
- Easy access to both Yellowhead Trail and the northeast section of Anthony Henday Drive

Get more information

Grant Ranslam

Principal
+1 780 217 5292
grant.ranslam@avisonyoung.com

David St. Cyr

Principal
+1 780 964 4601
david.stcyr@avisonyoung.com

avisonyoung.com

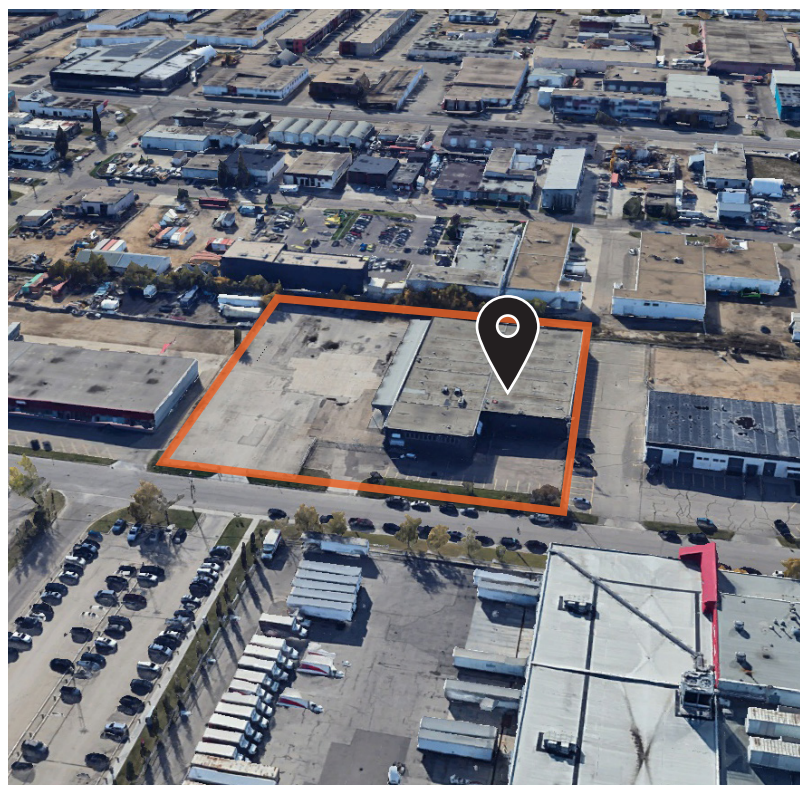
For Lease or Sale

14635 - 121A Avenue, Edmonton, AB



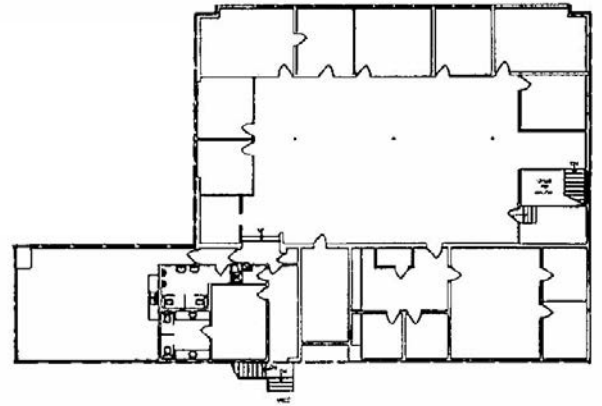
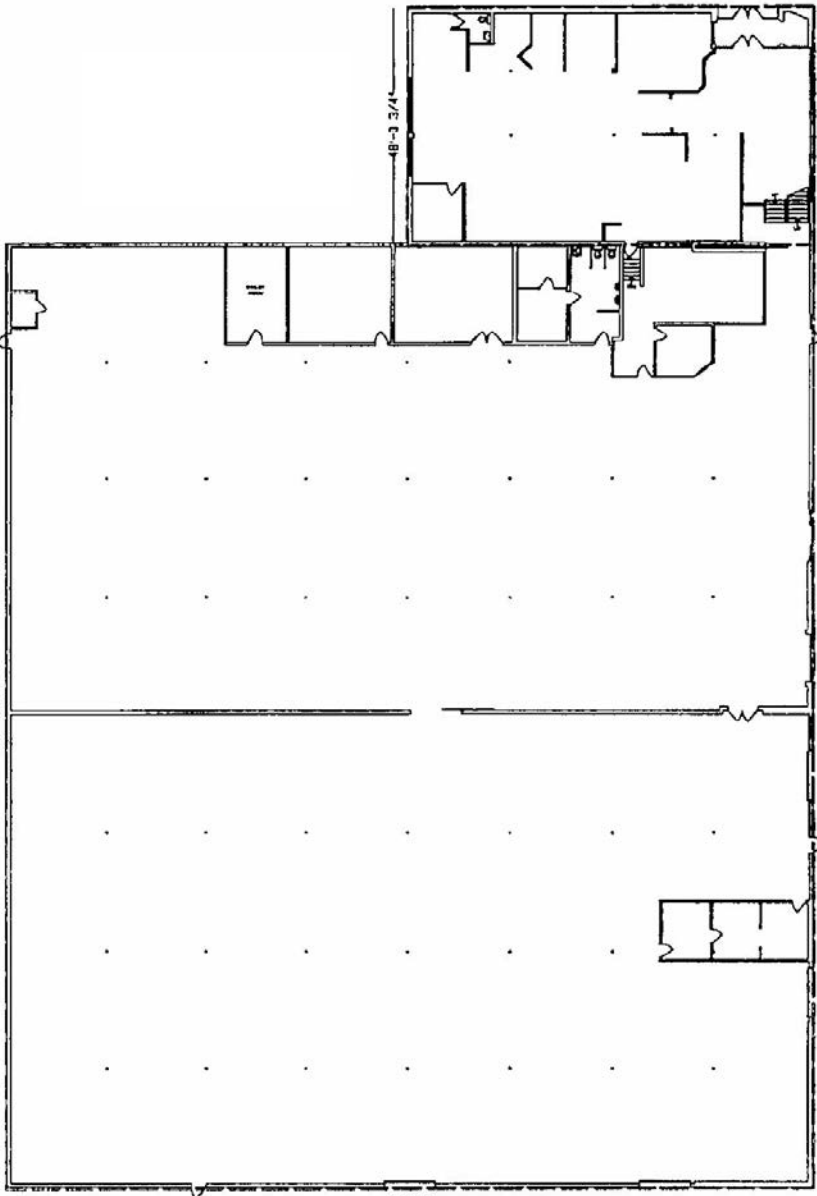
Offering summary

Legal Description:	Plan 5951KS Block 3 Lot 2
Available Area:	Office (two floors) 10,658 sf Shop/Warehouse 30,691 sf Total 41,349 sf
Site Size:	2.87 acres
Zoning:	IM - Medium Industrial
Loading:	Covered dock & ramped grade
Power	3 Phase 4 Wire 600 Amp 208 Volt
Ceiling Height:	15'
Operating Costs:	\$3.53 psf (2025)
Lease Rate:	\$8.75 psf
Sale Price:	Market



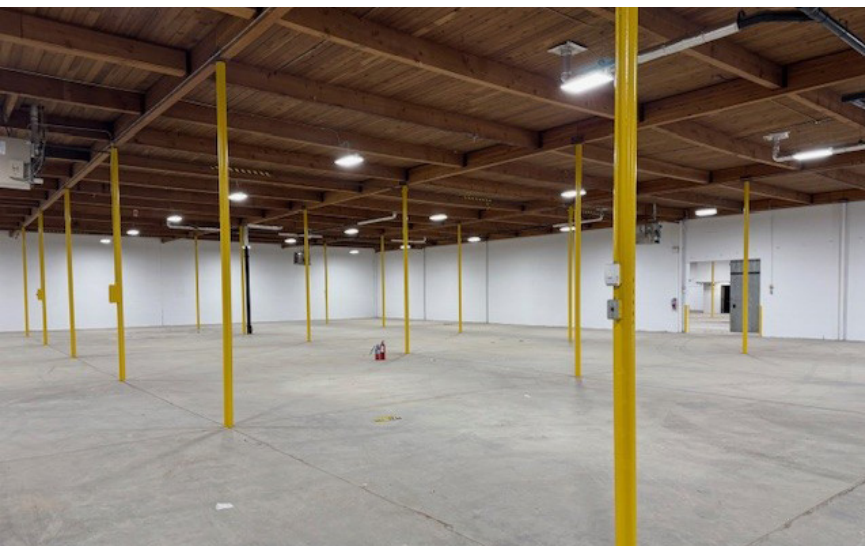
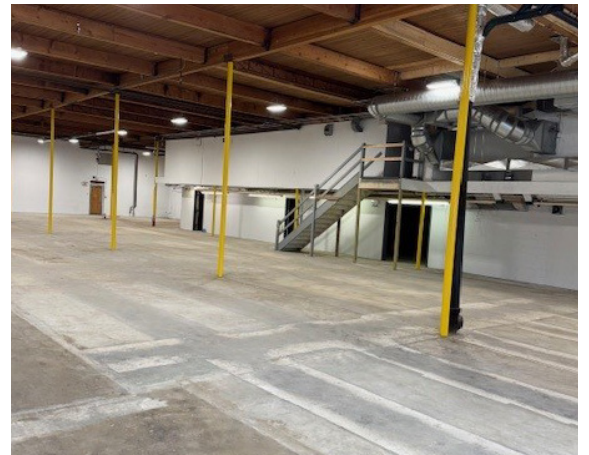
For Lease or Sale

14635 - 121A Avenue, Edmonton, AB



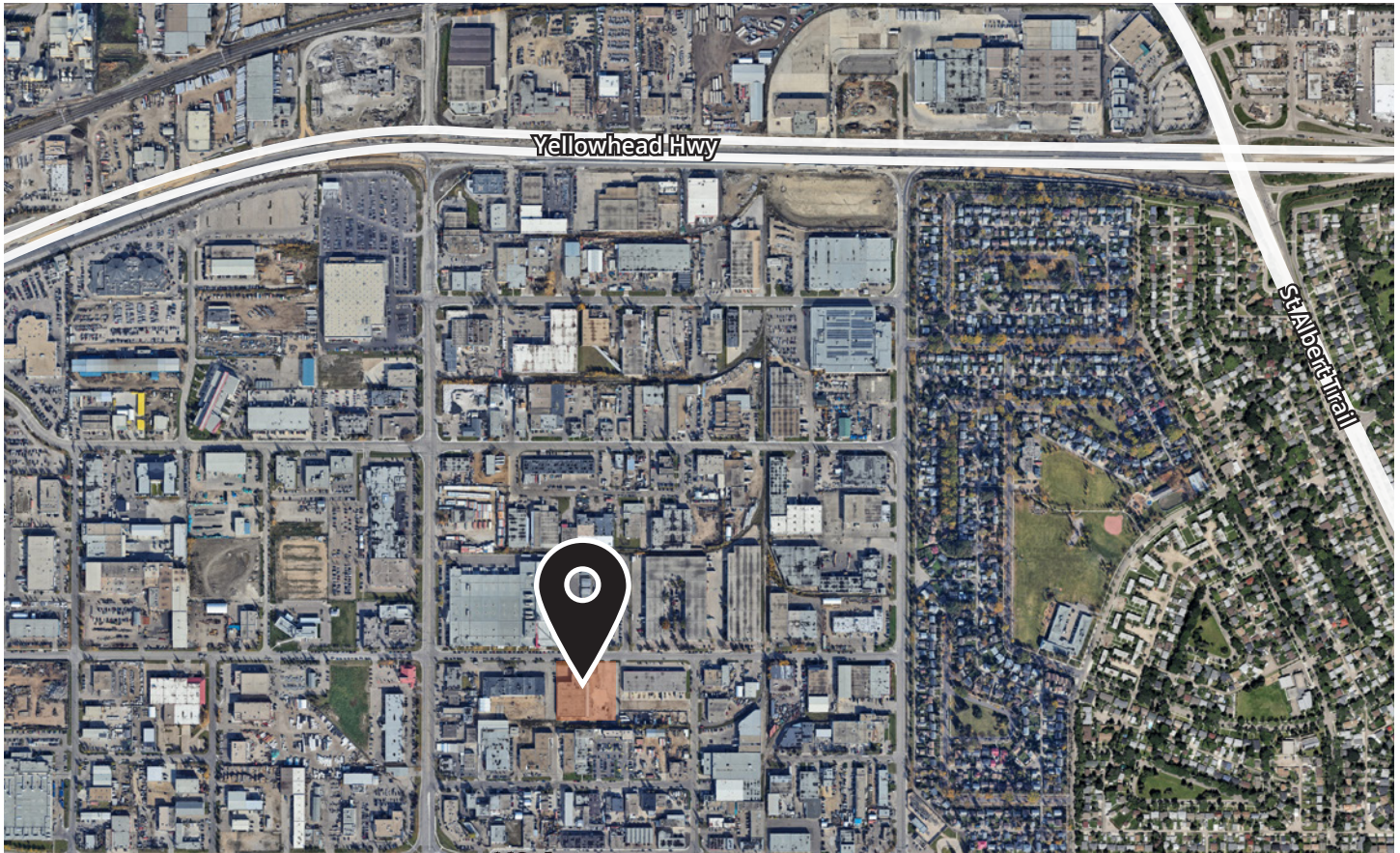
Second floor
Office area - 6,780 SF

Main floor
Office area - 3,878 SF
Warehouse - 30,691 SF



For Lease or Sale

14635 - 121A Avenue, Edmonton, AB



Grant Ranslam
Principal
+1 780 217 5292
grant.ranslam@avisonyoung.com

David St. Cyr
Principal
+1 780 964 4601
david.stcyr@avisonyoung.com

**AVISON
YOUNG**