

8

5

8

FOR SUBLEASE



THE HIGH
TECHNOLOGY
FACILITIES GROUP

CBRE

BEATTY STREET

5,413 SF Improved Tech Office Space in Yaletown!



BUILDING FEATURES



24-hour card access **security system**



October 2025 renovated lobby with reception desk



Secure indoor **bicycle storage**



High ceilings with **opening windows** allowing tenants to enjoy fresh air



Well equipped **building gym** on 2nd Floor



Tenant only outdoor **basketball court** plus **courtyard**



Convenient access to popular nearby restaurants and cafes, plus only a 8-min walk to Stadium Chinatown or Yaletown Roundhouse SkyTrain Stations



PROPERTY DETAILS

UNIT

220

SIZE

5,413 SF (Approx.)

ASKING RENT

Contact Listing Agent

ADDITIONAL RENT

\$26.31 PSF (2025 Est.)

AVAILABILITY

Immediately

SUBLEASE EXPIRY

Flexible

SPACE FEATURES

- » Open area allowing **53** workstations
- » **5** meeting rooms
- » **1** large boardroom
- » **3** call rooms
- » Kitchen & lounge areas
- » Storage & data room
- » High ceilings
- » Floor to ceiling windows

*Floor plan not to scale.



Meeting room/private office



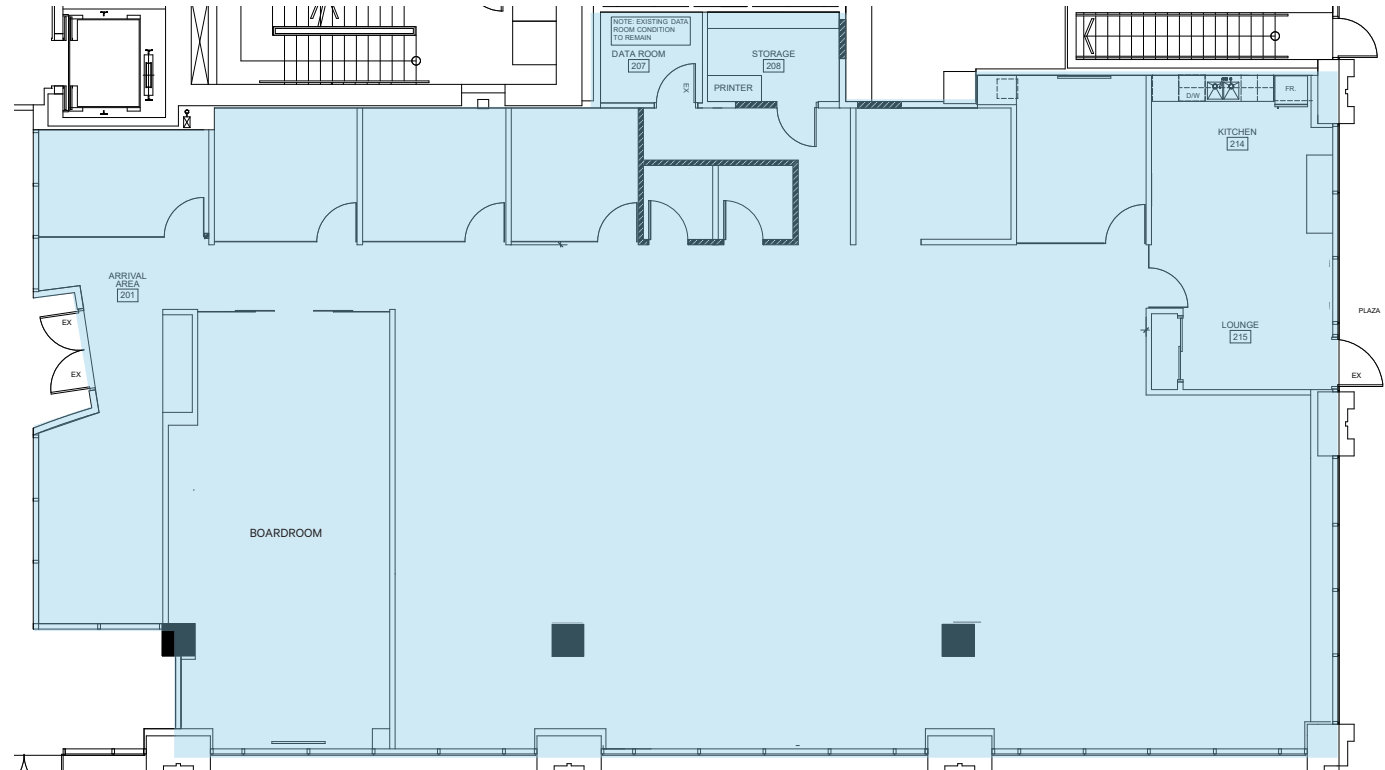
Kitchen & Lounge with direct access to courtyard



Open area with large windows



Large boardroom



THE LOCATION

Nestled between the trendy Yaletown and Gastown neighborhood and the bustling Central Business District, this location seamlessly blends the lively social hubs with modern and practical state-of-the-art offices.

Within a 5-min walking distance, you'll find an array of restaurants, bars, and coffee shops, making it the ideal spot for tenants seeking a vibrant downtown lifestyle while staying connected to the business hub.

With Amazon's newest office building, "The Post", the Deloitte Summit Building, SAP office and TELUS Garden nearby, this area is rapidly becoming an emerging innovation district and offers the best of Vancouver's downtown urban experience.

NEARBY AMENITIES

0.5 KM RADIUS



79+
Restaurants
& Bars



13+
Fitness
Facilities



88+
Businesses
& Retail

WALK SCORE



98
Walker's
Paradise



100
Rider's
Paradise



86
Biker's
Paradise



FOR MORE INFORMATION, CONTACT

BLAIR QUINN

Personal Real Estate Corporation
CBRE Limited | The HTFG
604 662 5161 | blair.quinn@cbre.com

ANDRE ALIE DAY

Personal Real Estate Corporation
CBRE Limited | The HTFG
604 662 5137 | andre.alieday@cbre.com



THE HIGH
TECHNOLOGY
FACILITIES GROUP

CBRE

This disclaimer shall apply to CBRE Limited, Real Estate Brokerage, and to all other divisions of the Corporation; to include all employees and independent contractors ("CBRE"). All references to CBRE Limited herein shall be deemed to include CBRE, Inc. The information set out herein, including, without limitation, any projections, images, opinions, assumptions and estimates obtained from third parties (the "Information") has not been verified by CBRE, and CBRE does not represent, warrant or guarantee the accuracy, correctness and completeness of the Information. CBRE does not accept or assume any responsibility or liability, direct or consequential, for the Information or the recipient's reliance upon the Information. The recipient of the Information should take such steps as the recipient may deem necessary to verify the Information prior to placing any reliance upon the Information. The Information may change and any property described in the Information may be withdrawn from the market at any time without notice or obligation to the recipient from CBRE. CBRE and the CBRE logo are the service marks of CBRE Limited and/or its affiliated or related companies in other countries. All other marks displayed on this document are the property of their respective owners. All Rights Reserved. Mapping Sources: Canadian Mapping Services canadamapping@cbre.com; DMTI Spatial, Envision Analytics, Microsoft Bing, Google Earth.