



FOR SALE

RANGE ROAD 23 - HIGHWAY 20, RIMBEY, AB



SALOMONS
COMMERCIAL

#103, 4315 - 55 Avenue, Red Deer, AB T4N 4N7
www.salomonscommercial.com

Max Field
Associate
403.314.6186
max@salomonscommercial.com



LOCATION

Rimby



SALE PRICE

\$900,000
(\$81,081 per Acre)



ZONING

M - Industrial



LEGAL DESCRIPTION

Plan 9723266, Block 1, Lot 1



LOT SIZE

11.10 Acres



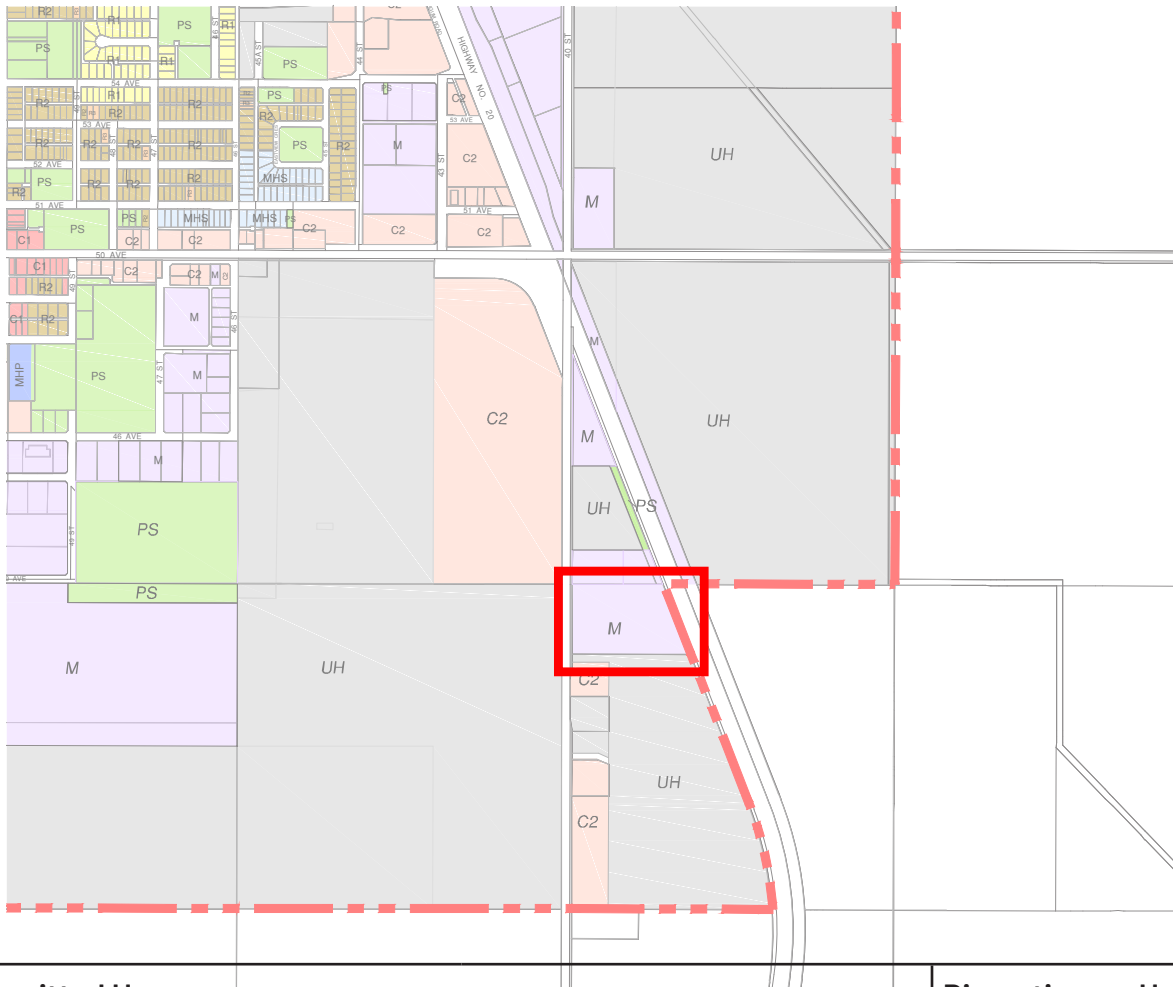
POSSESSION

Immediate

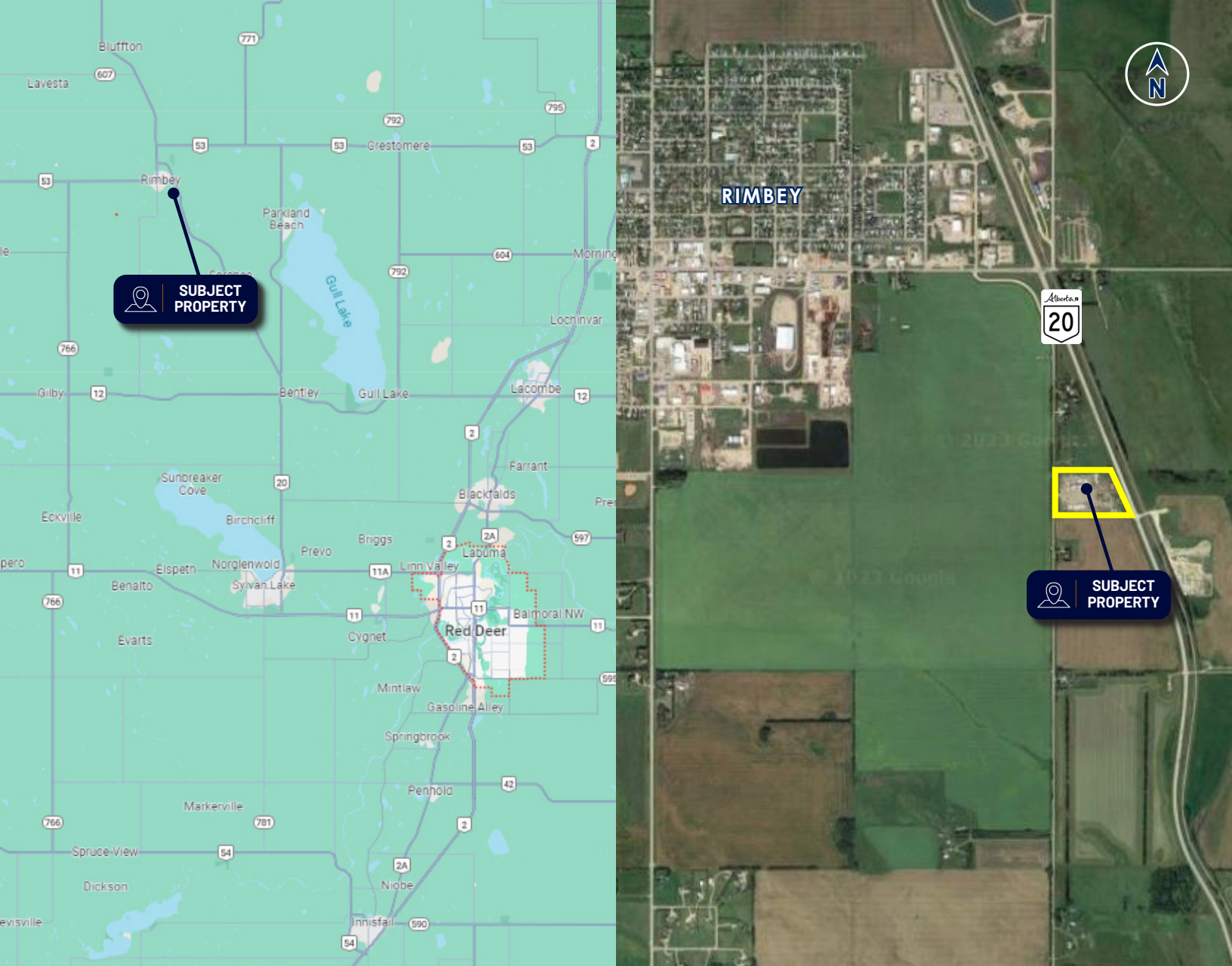
PROPERTY DETAILS

Industrial zoned lot available to purchase in Rimby. Zoning options allow for a wide range of uses like self storage, gas station, recycling depot, salvage yard and much more. The lot is 11.1 Acres of land with direct exposure to Highway 20, access is from range road 23. Ideal location with easy access to major travel routes.

Zoning Plan



| Permitted Uses | | Discretionary Uses |
|---|--|---|
| Agricultural sales and/or service Animal kennel/shelter Auction mart Automotive sales and/or rental Automotive service and/or paint shop Automotive supply store Bakery Car/Truck wash Club Convenience store Contracting services Dry cleaning/Laundromat services Gas bar Greenhouse | Manufacturing, processing, packaging or assembly of goods or materials Mini storage Public Administration Repair shop Sign Trucking establishment Warehouse Veterinary clinic | Abattoir Amusement arcade Adult entertainment Auction mart Bulk fuel and/or fertilizer sales and storage Gambling and gaming hall Liquor store Meat processing plant Recycling depot Restaurant Restaurant, drive-thru Salvage yard Solar Collectors Wrecking yard |



Central Alberta's Ambassador for Commercial Real Estate



#103, 4315 - 55 Avenue Red Deer, AB T4N 4N7
www.salomonscommercial.com

Davin Kemshead
 Listing Agent
 403.314.6190
davin@salomonscommercial.com

Max Field
 Listing Agent
 403.314.6186
max@salomonscommercial.com

Kelly Babcock
 Broker/Partner
 403.314.6188
kelly@salomonscommercial.com

Brett Salomons
 Partner
 403.314.6187
brett@salomonscommercial.com

Mike Williamson
 Associate
 403.314.6189
mike@salomonscommercial.com

Jordan Krulicki
 Associate
 403.314.6185
jordan@salomonscommercial.com