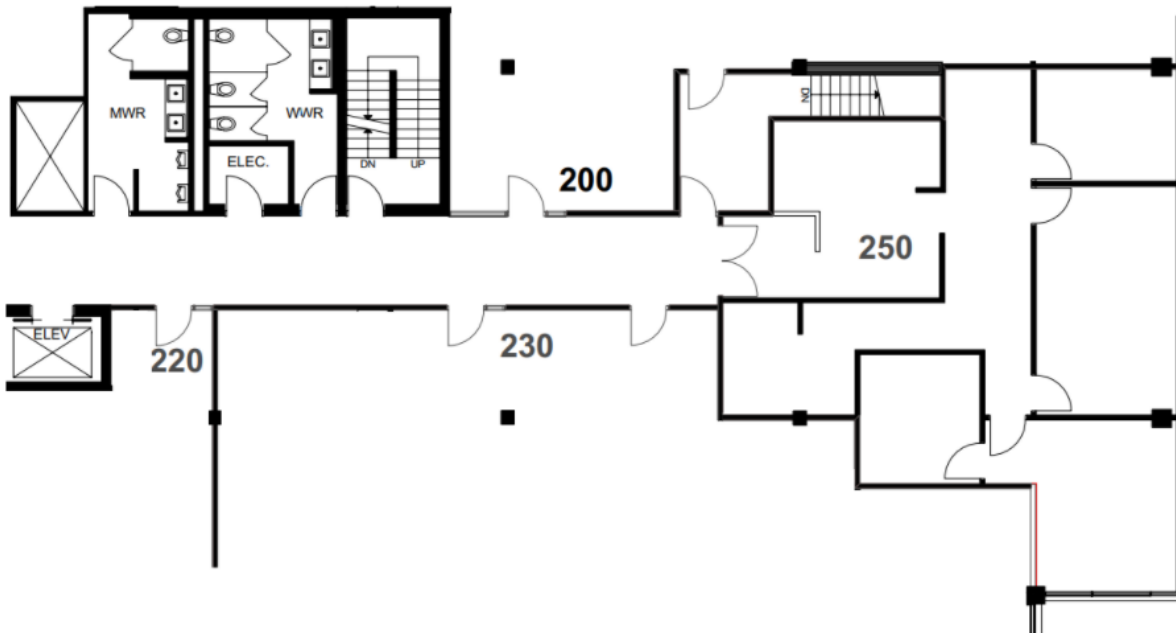
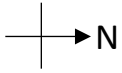


5611 Cooney Road, Richmond, BC



Suite 250

1,372 square feet

Description: Northeast corner. Improved with four perimeter offices, reception, waiting area and open space.

This is a representation for marketing purposes only and should not be used for measurements of any kind.
This drawing is not to scale.

TPMG CAPITAL

Real Estate Acquisition
Management
Leasing