



#215 - 625 Howe Street | Vancouver, BC

For Sublease

625 Howe Street is centrally located on the southwest corner of Howe and Pender Streets in the Central Business District. Very convenient to all SkyTrain lines as well as numerous restaurants, cafés, shops, services and Pacific Centre Mall. The Building features parking at a ratio of 1:1,800 SF leased, a well-equipped tenant's gym, bike storage and showers. A conference centre is available to tenants in the neighbouring building.

Mark Blancard

Vice President, Office Buildings
604 817 5160
mblancard@naicommercial.ca

NAI Commercial

1075 W Georgia St, Suite 1300
Vancouver, BC V6E 3C9
+1 604 683 7535 | naicommercial.ca

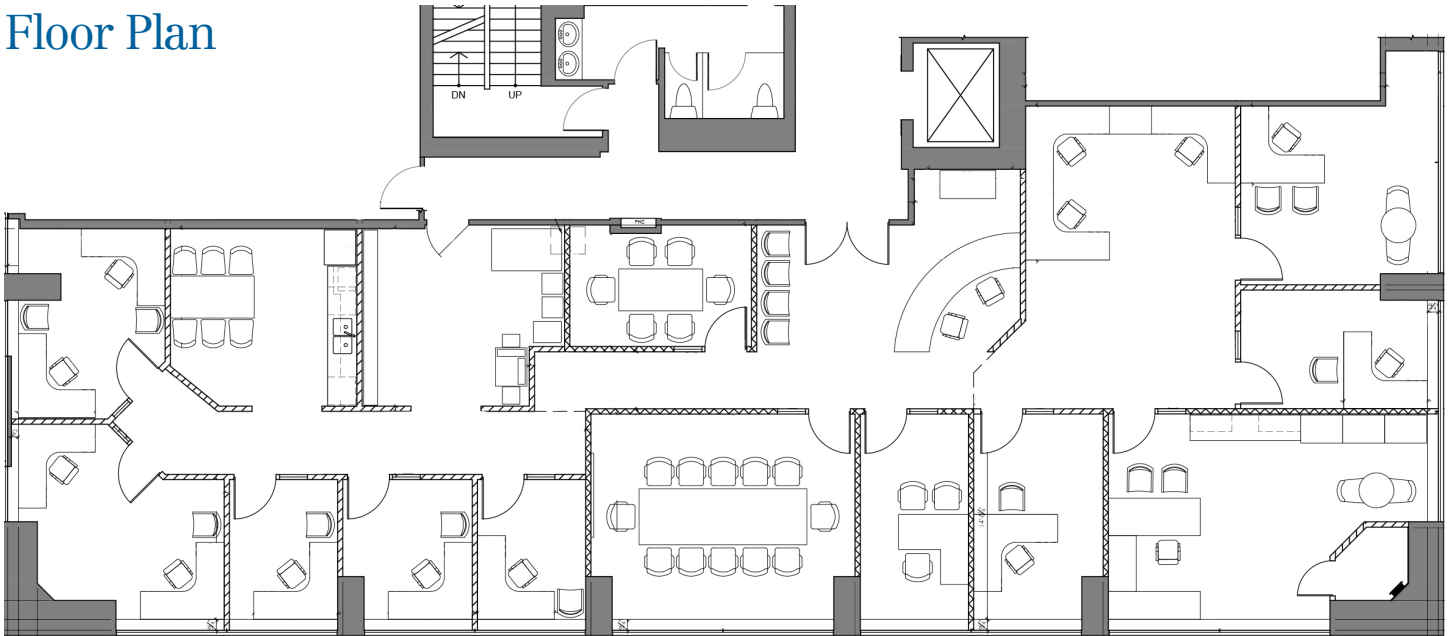
Property Details

Unit Size:	4,101 SF
Net Rent:	Contact Broker
Additional Rent:	\$25.10/SF (2024)
Availability:	On 60 – 90 days' notice
Sublease Expiry:	January 30, 2026

Comments

The Premises are newly improved and feature a double glass entry door, with elevator exposure. There are 10 perimeter offices, a boardroom, meeting room, kitchen, storage area, and well appointed reception area. The Premises can be added to an additional 4,247 SF on the 2nd floor.

Floor Plan



DOUBLE GLASS ENTRY



ELEVATOR EXPOSURE / RECEPTION



MEETING ROOM



KITCHEN



TENANT'S GYM



99



WALKER'S PARADISE

100



RIDER'S PARADISE

84



VERY BIKEABLE

SEAPLANE HARBOUR

CANADA PLACE

WATERFRONT

HARBOUR CENTRE

7A

GASTOWN

625 HOWE



PACIFIC CENTRE

GRANVILLE

HUDSON'S BAY

HOWE ST

W GEORGIA ST

99

NAICommercial

1300-1075 W Georgia St, Vancouver, BC V6E 3C9 | +1 604 683 7535 | naicommercial.ca

Mark Blancard

Vice President, Office Buildings
604 817 5160

mblancard@naicommercial.ca

No warranty or representation, express or implied, is made as to the accuracy of the information contained herein, and the same is submitted subject to errors, omissions, change of price, rental or other conditions, prior sale, lease or financing, or withdrawal without notice, and of any special listing conditions imposed by our principals no warranties or representations are made as to the condition of the property or any hazards contained therein are any to be implied.