

Suites 310 & 315

1681 Chestnut Street

Vancouver, BC

Third Floor Office Space with Access to an
Exclusive & Shared Patio



Office | For Sublease

The Opportunity

1681 Chestnut Street presents an exceptional opportunity for companies seeking a vibrant and centrally located workspace in a thriving neighbourhood. This versatile workspace features twelve offices, a meeting room, reception and waiting area, staff room with kitchen, open area and access to two large patios.

VIRTUAL TOUR

AVAILABLE AREA

6,556

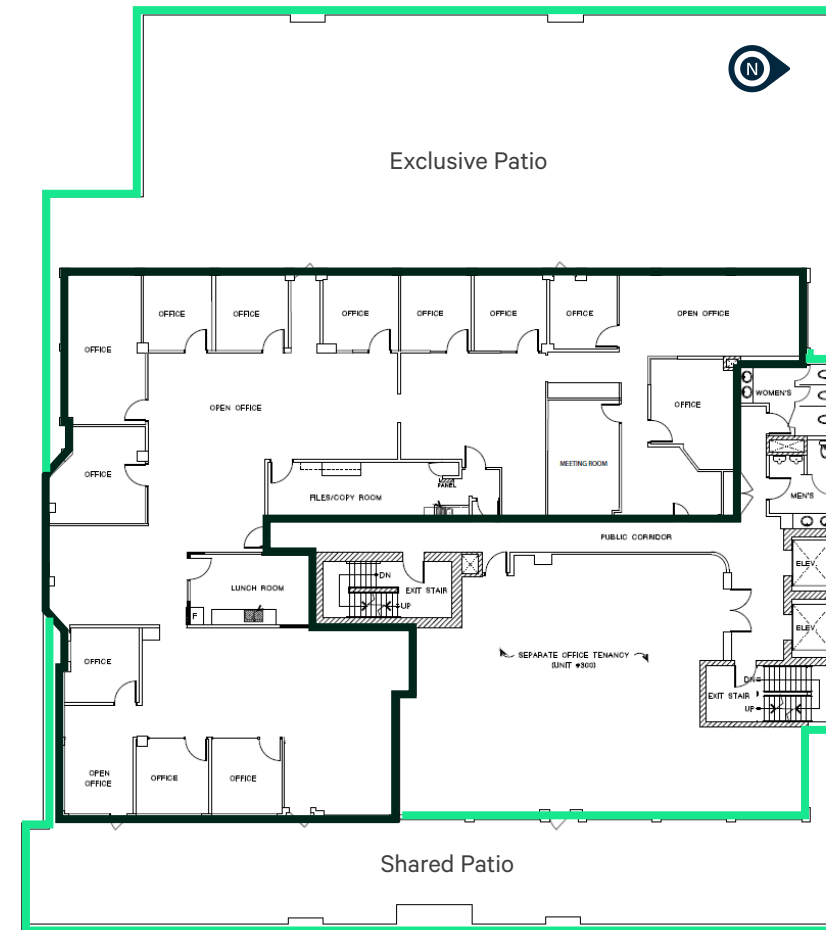
RENTABLE SQUARE FEET

Flexible demising options available



Suite 310 & 315, 1681 Chestnut Street
Vancouver

Floor Plan



Expiry

August 30, 2026



Lease Rate

Contact Listing Agents



Additional Rent

\$20.22 PSF (2025 Est.)



Availability

Immediate



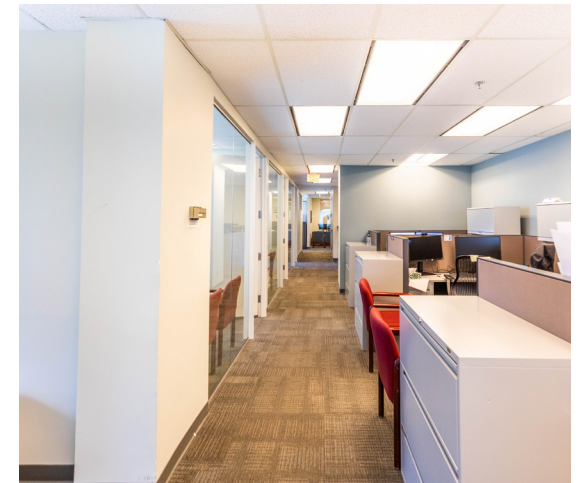
Parking

Ample parking available per separate agreement with Landlord



Furniture

Some furniture available



Space Features

- + Reception and waiting area
- + Meeting room
- + Twelve (12) private offices
- + Open plan workspace
- + Staff room with kitchen
- + Exclusive and shared patio access
- + Ample underground parking

Office | For Sublease

Suites 310 & 315, 1681 Chestnut Street | Vancouver



Situated in the heart of Vancouver's Kitsilano neighbourhood, 1681 Chestnut Street offers easy access to a diverse array of amenities, including trendy cafes, restaurants, and boutique shops. The property is just a short walk from the picturesque Kitsilano Beach and is well-connected to public transportation, making it an ideal spot for both employees and clients. With its vibrant neighbourhood and proximity to downtown Vancouver, this location provides a dynamic environment conducive to business growth and collaboration.



CBRE Limited

1021 West Hastings Street #2500, Vancouver, BC www.cbre.ca

Contact Agents

Tara Finnegan

Personal Real Estate Corporation
Senior Vice President
Office Properties
tara.finnegan@cbre.com
604 662 5159

Luke Gibson

Personal Real Estate Corporation
Senior Vice President
Office Properties
luke.gibson@cbre.com
604 662 5142

This disclaimer shall apply to CBRE Limited, Real Estate Brokerage, and to all other divisions of the Corporation; to include all employees and independent contractors ("CBRE"). The information set out herein, including, without limitation, any projections, images, opinions, assumptions and estimates obtained from third parties (the "Information") has not been verified by CBRE, and CBRE does not represent, warrant or guarantee the accuracy, correctness and completeness of the Information. CBRE does not accept or assume any responsibility or liability, direct or consequential, for the Information or the recipient's reliance upon the Information. The recipient of the Information should take such steps as the recipient may deem necessary to verify the Information prior to placing any reliance upon the Information. The Information may change and any property described in the Information may be withdrawn from the market at any time without notice or obligation to the recipient from CBRE. CBRE and the CBRE logo are the service marks of CBRE Limited and/or its affiliated or related companies in other countries. All other marks displayed on this document are the property of their respective owners. All Rights Reserved.

Mapping Sources: Canadian Mapping Services canadamapping@cbre.com; DMTI Spatial, Environics Analytics, Microsoft Bing, Google Earth.