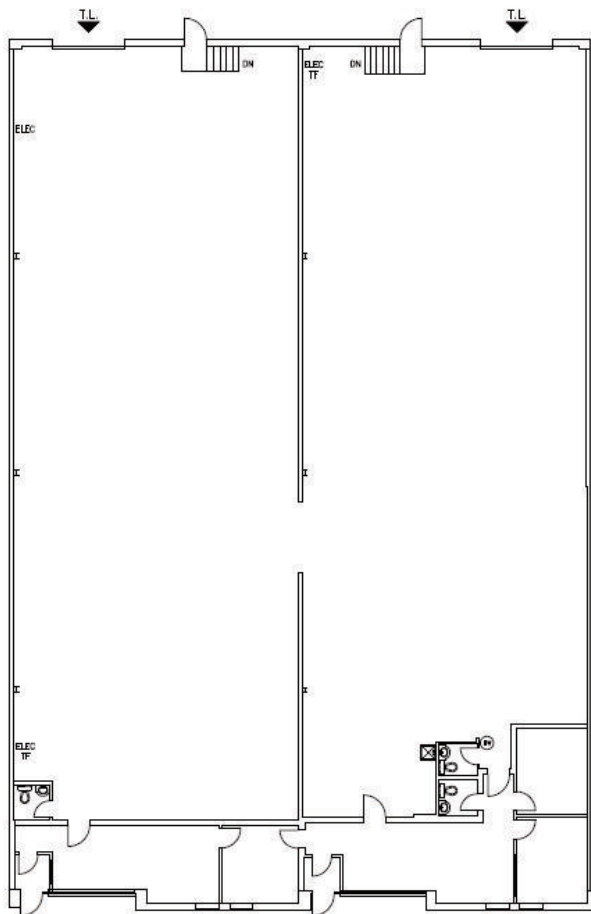


For Lease

Dixie Business Park

1715 Meyerside Drive
Mississauga, ON



Units 3-4

Total Square Feet
9,768 SF

Availability: July 1, 2026

Key features:

- 1,290 SF of office built out
- 18'1" clear height
- 2 loading dock doors
- 3 washrooms
- Net Rent: \$16.95 PSF
- 2026 TMI: \$7.03 PSF