

For Lease

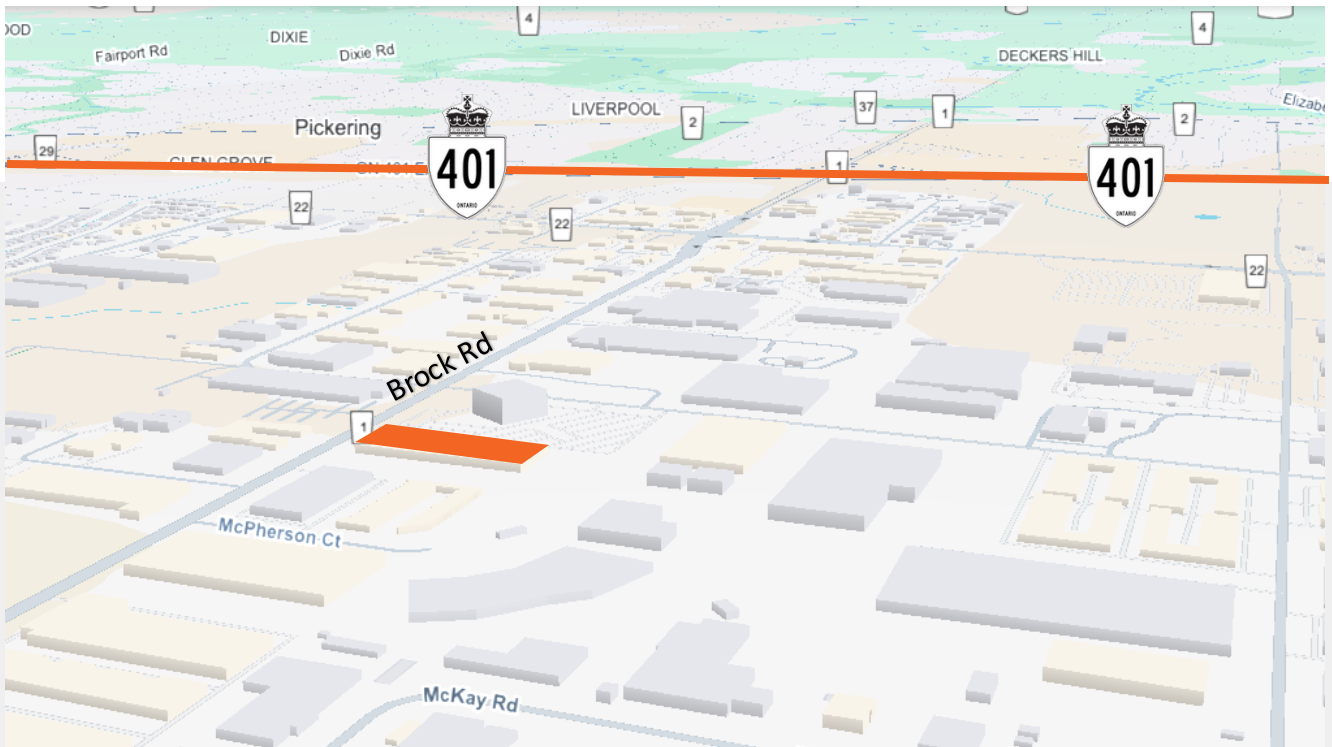


# 1725 McPherson Ct, Unit 1

## Pickering, ON

Situated in the rapidly growing City of Pickering, 1725 McPherson offers a versatile industrial opportunity within a well-established employment node.

- Available Immediately
- 69,000 SF
- 24' clear height
- 6 truck-level doors
- Rate: \$1.00 PSF

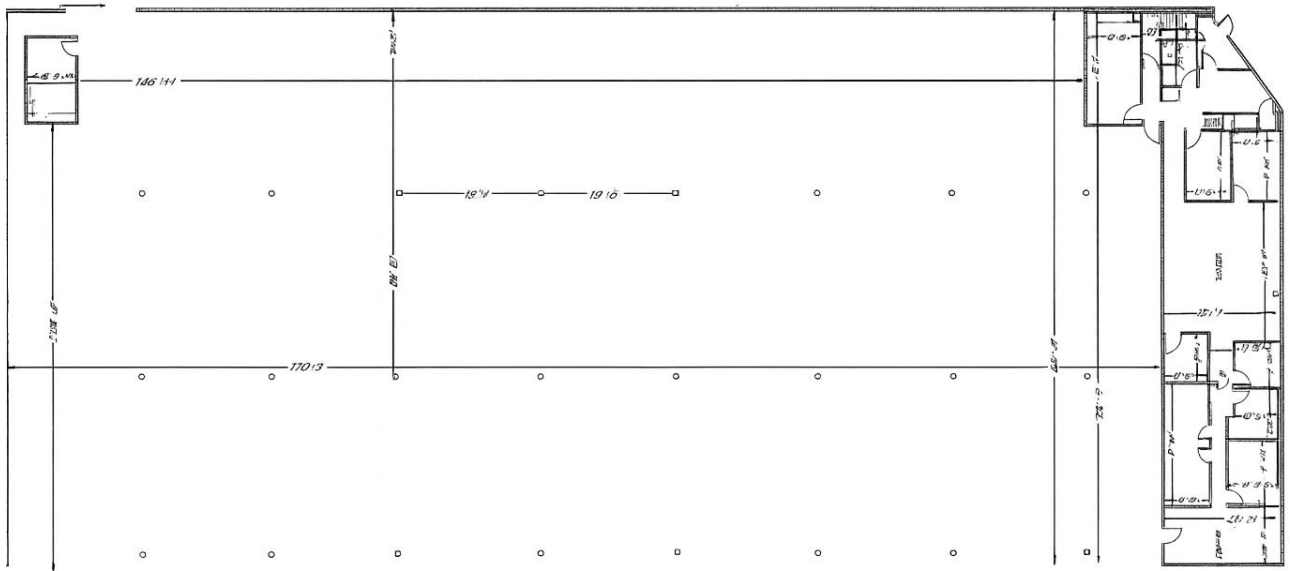


For leasing opportunities

Eddie McKiernan, Senior Manager, Leasing  
416.737.4277 | [emckiernan@dream.ca](mailto:emckiernan@dream.ca)

Dream Industrial REIT  
[leasing.dream.ca](http://leasing.dream.ca)

# Floor Plan



Available Size:	Rates:	Total Additional Rent:	Availability:
69,000 SF	\$1.00 PSF	\$4.43 PSF	Immediate
Clear Height:	Loading Doors:	Zoning:	Power:
24'	6 TL	M2 / M2S	800 A